

Section 9 – Fabrication Tolerances

9.1 Cold-Formed Structural Members

The fabrication tolerances indicated in Figure 9.1 for cold-formed structural members are defined in Table 9.1.

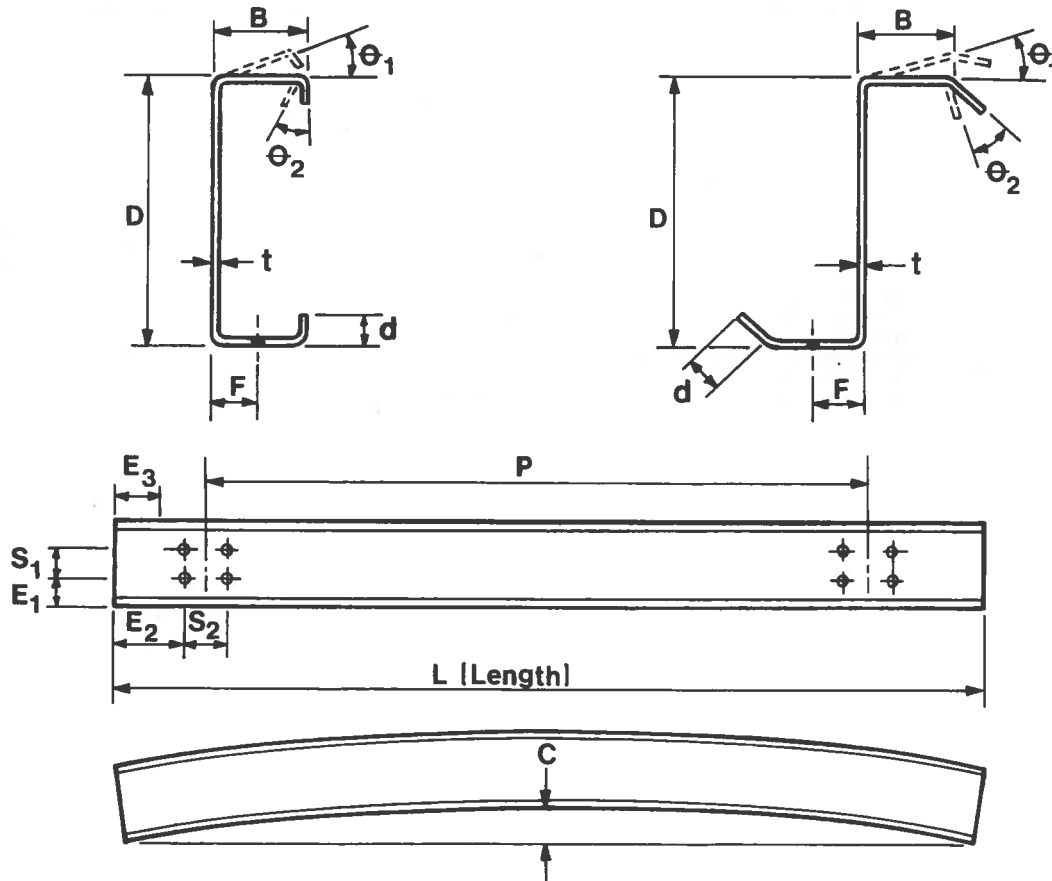


Figure 9.1: Cold-Formed Structural Members

Metal Building Systems Manual

Table 9.1: Cold-Formed Structural Members

Formed Structural Members			
	Dimension	Tolerances	
		+	-
Geometry	D	3/16"	3/16"
	B	3/16"	3/16"
	d	3/8"	1/8"
	θ_1	3°	3°
	θ_2	5°	5°
Hole Location	E ₁	1/8"	1/8"
	E ₂	1/8"	1/8"
	E ₃	1/8"	1/8"
	S ₁	1/16"	1/16"
	S ₂	1/16"	1/16"
	F	1/8"	1/8"
	P	1/8"	1/8"
Length (L)		1/8"	1/8"
Camber (C)		1/4" x L (ft)/ 10	
Minimum Thickness (t)		0.95 (Design t)	