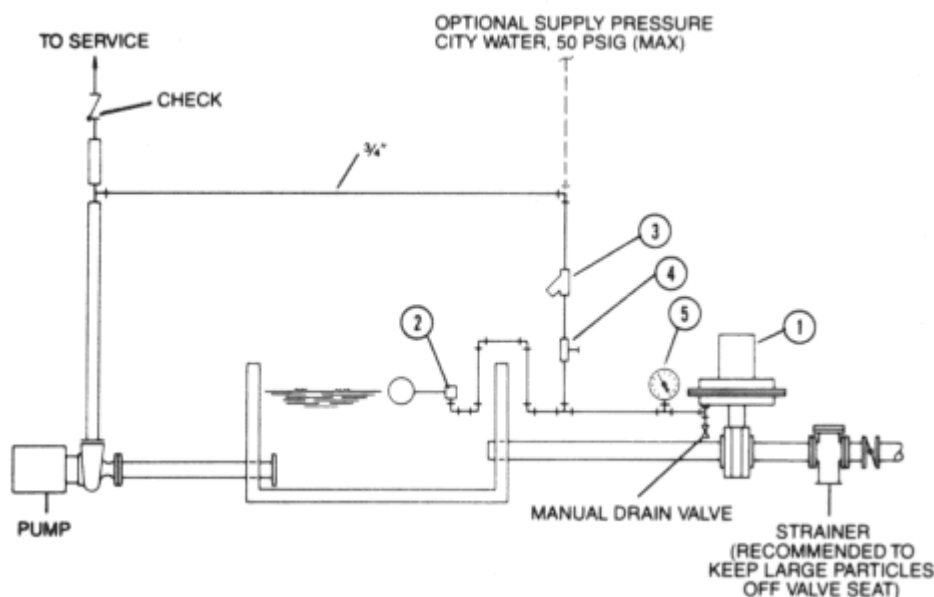




LEVEL CONTROL VALVE SYSTEM

The LEVEL CONTROL VALVE SYSTEM, complete with PILOT VALVE and accessories, will maintain the appropriate tank operating water level. The system is tight closing on shut-off. Items #1-#5 are supplied by **MER-MADE FILTER**.



1. The LEVEL CONTROL VALVE (LCV) AND ACTUATOR is a sprint-to-close type that will open when pressure is applied to the underside of the diaphragm.
2. The BRASS PILOT VALVE acts as a controller. As the water level in the tank drops, the pilot valve bleeds off less water from the supply line, thereby increasing pressure on the diaphragm, opening the LCV & allowing more water to flow through the influent line into the tank. The converse of this happens when the water level rises in the tank.
3. The 1/2" INLINE STRAINER helps to keep small particles out of the system.
4. The 1/2" BRASS NEEDLE VALVE allows for finer control of valve opening & closing.
5. The 0-60 LB., 2-1/2" PRESSURE GAUGE provides you with the supply pressure.

SYSTEM SPECIFICATIONS:

A modulating type valve shall be installed on the tank inlet line. The valve shall be spring-closed, pressure-open diaphragm type with the operating pressure being supplied by an external water (optional air) source, minimum 20 psi. The valve shall be controlled by a pilot float valve installed in the tank. The system shall come complete with needle valve, inline strainer & pressure gauge. System to be supplied by MER-MADE FILTER, INC.

[Level Control Valve](#)

[Level Control Valves For Swimming Pool Systems](#)

| [Main](#) | [Sand Filters](#) | [Assemblies](#) | [Basket Strainers](#) | [Level Control Valve](#) | [Float](#)
[Valves](#) | [Reducers](#) | [Surge Tanks](#) |