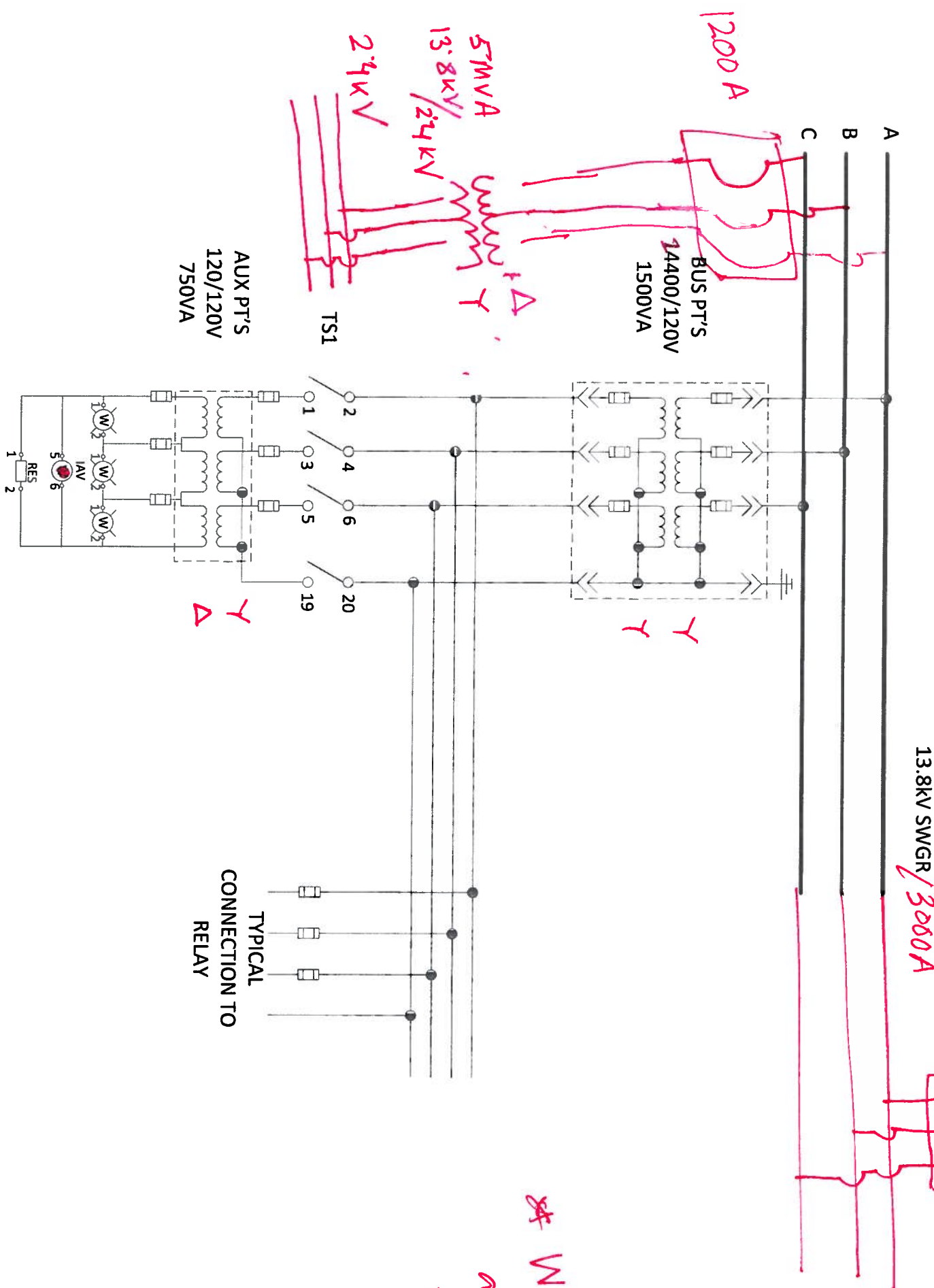


NEUTRAL STABILIZATION CIRCUIT FOR USE DURING LOOP



24-13.8-13.8 kV  
H-66/88/118 MVA  
X-36/48/60 MVA  
Y-36/48/60 MVA

\* We will open 3000 A breaker and back feed from 24 kV bus through 5 MVA transformer.

BOM		
IAV	GE	12IAV51D9A
RES	OHMITE	L750J6SR
TS1	ABB	129A501G01
AUX PT'S	GE	450-120