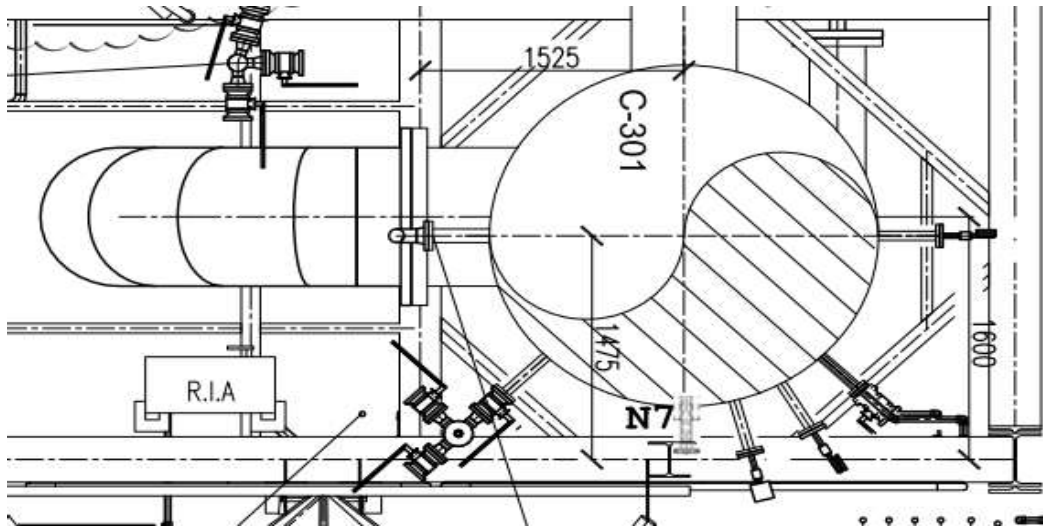
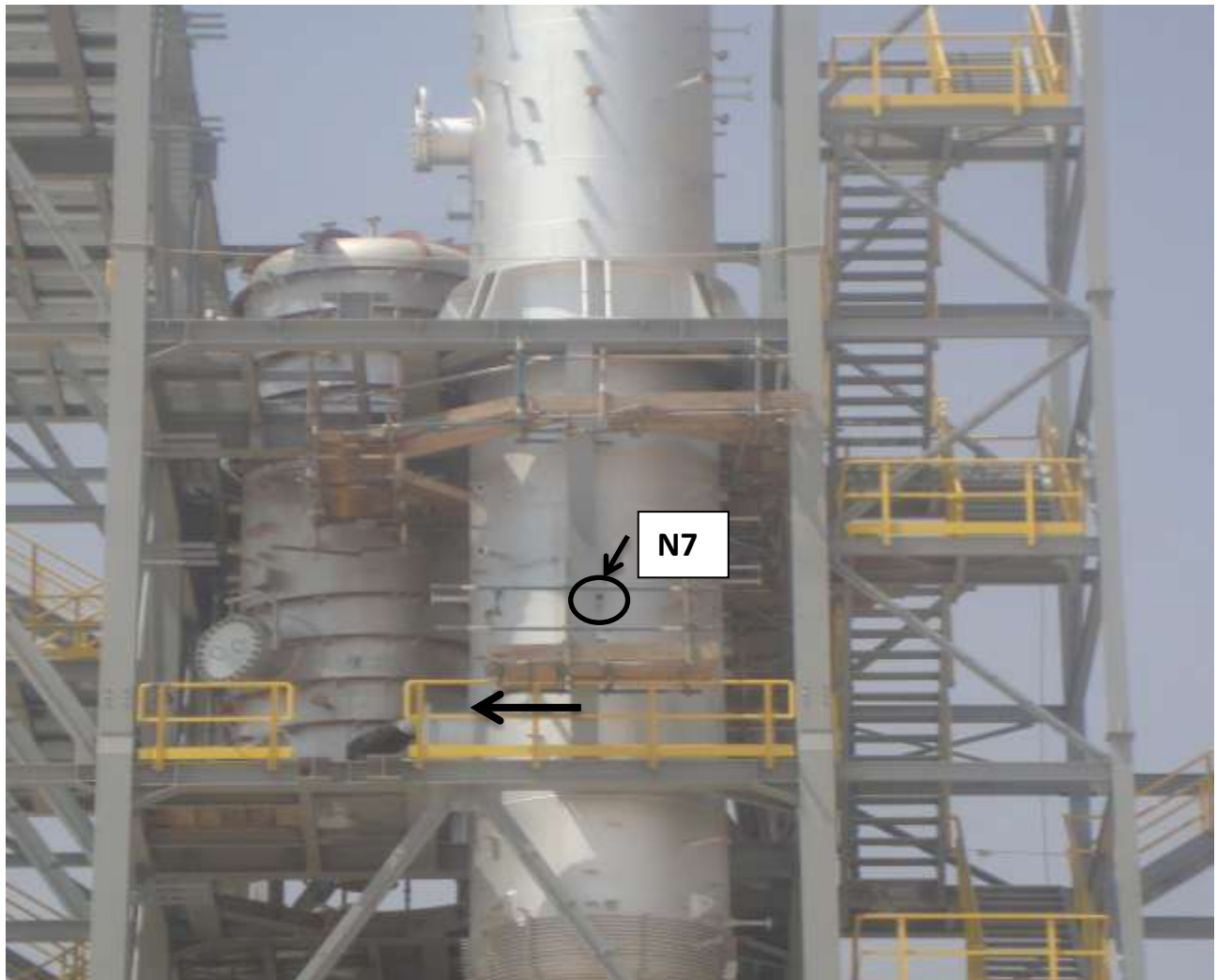


Nozzle N7 LBO reflux 2" touch with column .

the actual orinetation is about 80degree ..and it should be 90 deg.so we need to rotate about 10 deg more to the same clockwise direction.





Can we cut this nozzle in the center but our wondering if we need to redo hydrotest later ?

Or also can we shifting the column itself by 10 to 15 cm to the south as it indicated by the arrow