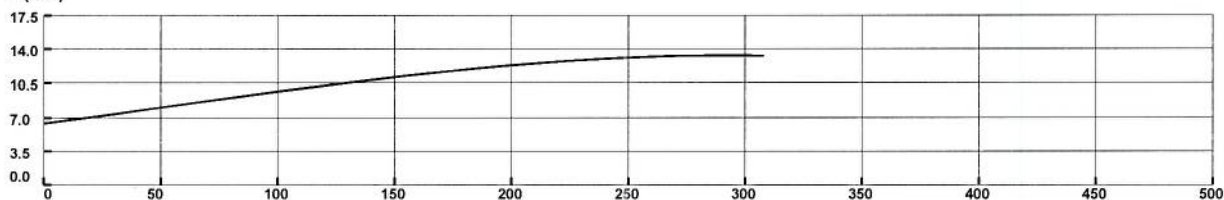


Pump Performance Datasheet

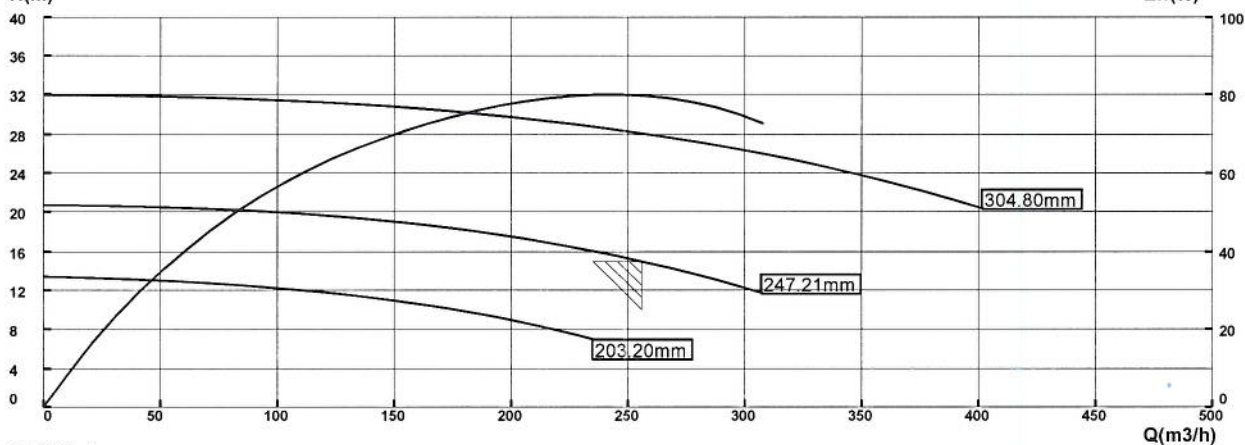
Customer			Quote number		
Customer reference			Pump size KPV6012-1/2		
Item number			Stages 1		
Service			Based on curve number 1		
Quantity of pumps			Date last saved 2013-6-7		
Operating Conditions			Liquid		
Flow	256	m3/h	Liquid type	Water	
Head(requested)	15	m	Additional liquid description		
Head(actual)	15	m	Solids diameter,max	0	mm
Suction pressure,rated/max			Temperature,max	20	C
NPSH available,rated	Ample		Fluid density,rated/max	1000.0	kg/m3
Frequency	50	HZ	Viscosity,rated	1.0	cst
Performance			Material		
Pump speed,rated	1490	rpm	Casing Material	Cast Iron	
Impeller diameter,rated	247.2	mm	Impeller Material	SS	
Impeller diameter,maximum	304.8	mm	Pressure Data		
Impeller diameter,minimum	203.2	mm	Maximum working requested	0.20	MPa
Efficiency	79.68	%	Maximum allowable working pressure	1.80	MPa
NPSH required/margin required	5.8	m	Maximum allowable suction pressure limit	1.60	MPa
Special speed/Suction special speed			Hydrostatic test pressure	2.70	MPa
MCSF	109.2	m3/h	Driver&Power Data		
Head Maximum,rated diameter	20.7	m	Driver sizing specification	180M_Paco	
Head rise to shut off	72.52	%	Margin over specification	1.41	
Flow,best eff. Point(BEP)	242.6	m3/h	Service factor		
Flow ratio(rated/BEP)	105.54	%	Power,hydraulic	10.45	kW
Head ratio(rated/Max Diameter)	53.39	%	Power,rated	13.12	kW
Diameter ratio(rated/max)	81.11	%	Power,maximum	13.29	kW
Viscous coefficients(CQ/CH/CE)	1.0/1.0/1.0		Min recommended driver	18.50	kW
Selection status	Acceptable				

P(kW)

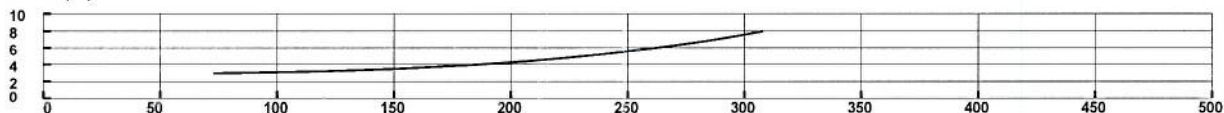


H(m)

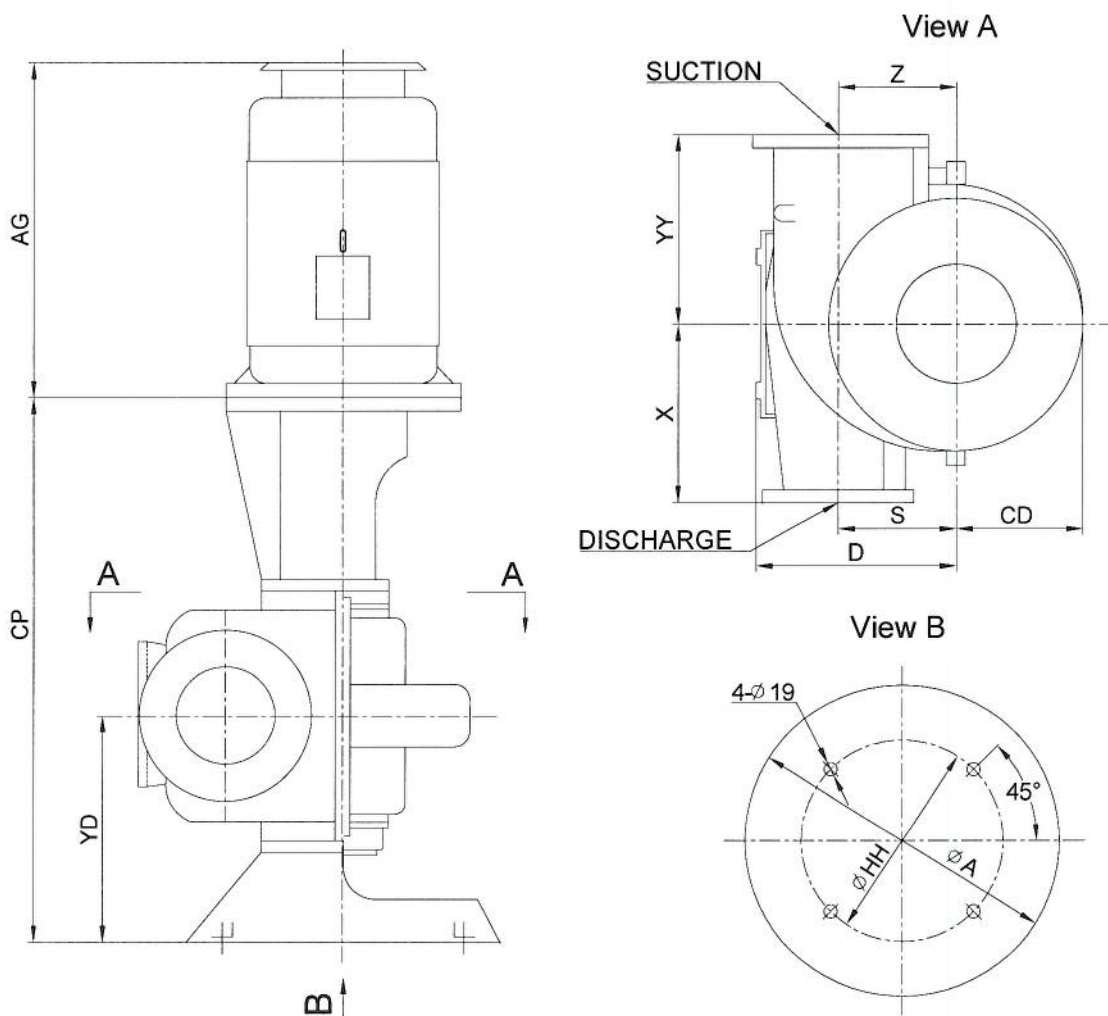
Eff(%)



NPSH(m)



MODEL 6012-2 FOOT MOUNTED PUMP
CAST IRON BASEPLATE DIMENSIONS



Pump Model	Motor	PUMP DIMENSIONS										WT. (KG)
		CP	YY	X	S/Z	D	YD	CD	A	HH	AG	
6012-2	180M-4	841	330	279	165	330	346	305	508	457	640	553

Explanation:

- 1.Suction size:8 inches; Discharge size:6 inches;
- 2.Flange standard: ANSI 125 LB;
- 3.The rotation direction (viewed from motor to pump) is counter-clockwise;
- 4.Motor:180M-4,18.5KW,415V/3PH/50Hz,4 Poles.
- 5.Weight:Bare Pump:254kg,Motor:167kg.

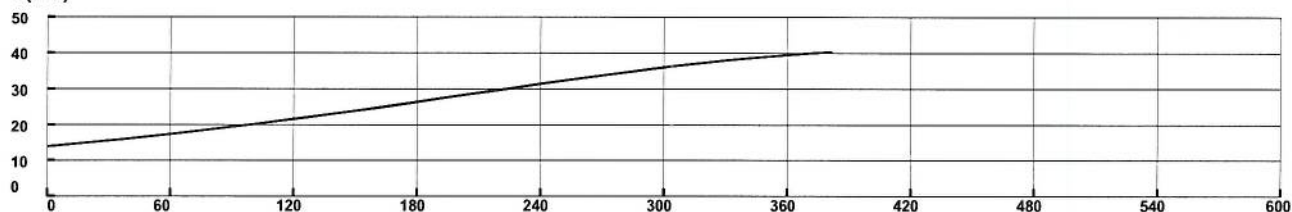
Note:All dimensions are in [mm] unless other stated

Sales Order	
Item	
Rev.	0
Date	07/06/2013
Signature	

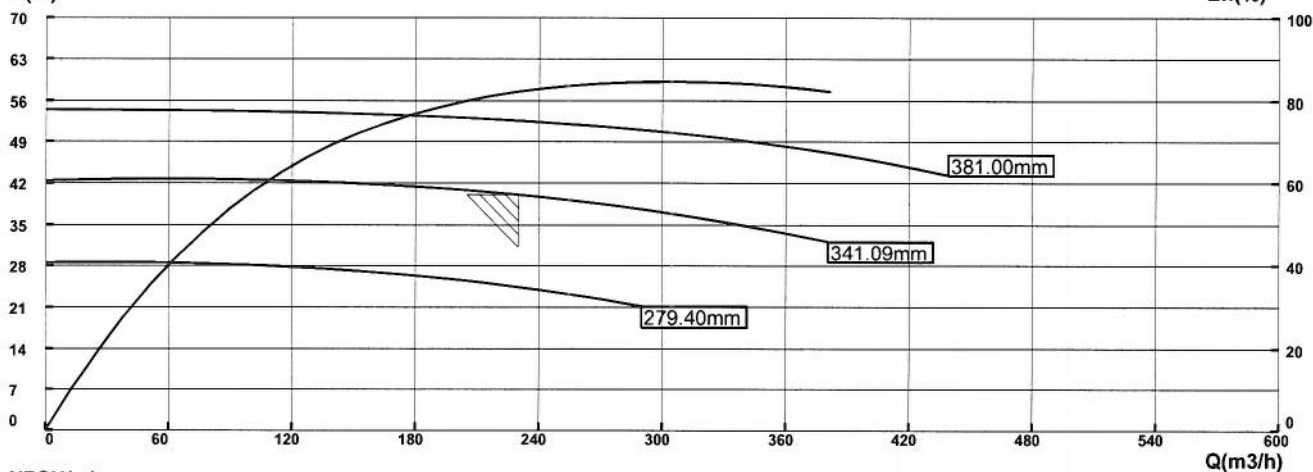
Pump Performance Datasheet

Customer			Quote number		
Customer reference			Pump size KPV5015-9/0		
Item number			Stages 1		
Service			Based on curve number 1		
Quantity of pumps			Date last saved 2013-5-29		
Operating Conditions			Liquid		
Flow	230	m3/h	Liquid type	Water	
Head(requested)	40	m	Additional liquid description		
Head(actual)	40	m	Solids diameter,max	0	mm
Suction pressure,rated/max			Temperature,max	20	C
NPSH available,rated	Ample		Fluid density,rated/max	1000.0	kg/m3
Frequency	50	HZ	Viscosity,rated	1.0	cst
Performance			Material		
Pump speed,rated	1475	rpm	Casing Material	Cast Iron	
Impeller diameter,rated	341.1	mm	Impeller Material	SS	
Impeller diameter,maximum	381.0	mm	Pressure Data		
Impeller diameter,minimum	279.4	mm	Maximum working requested	0.42	MPa
Efficiency	82.12	%	Maximum allowable working pressure	1.60	MPa
NPSH required/margin required	3.6	m	Maximum allowable suction pressure limit	1.18	MPa
Special speed/Suction special speed			Hydrostatic test pressure	2.40	MPa
MCSF	136.9	m3/h	Driver&Power Data		
Head Maximum,rated diameter	42.4	m	Driver sizing specification	225S_Paco	
Head rise to shut off	94.38	%	Margin over specification	1.21	
Flow,best eff. Point(BEP)	304.3	m3/h	Service factor		
Flow ratio(rated/BEP)	75.59	%	Power,hydraulic	25.04	kW
Head ratio(rated/Max Diameter)	76.03	%	Power,rated	30.50	kW
Diameter ratio(rated/max)	89.52	%	Power,maximum	38.77	kW
Viscous coefficients(CQ/CH/CE)	1.0/1.0/1.0		Min recommended driver	37.00	kW
Selection status	Acceptable				

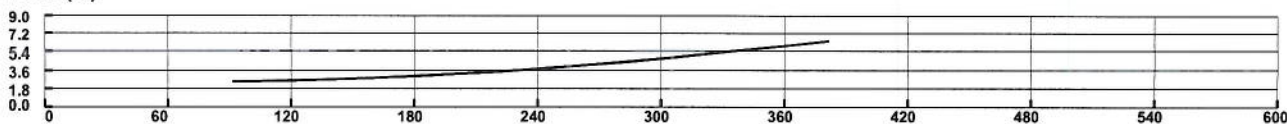
P(kW)



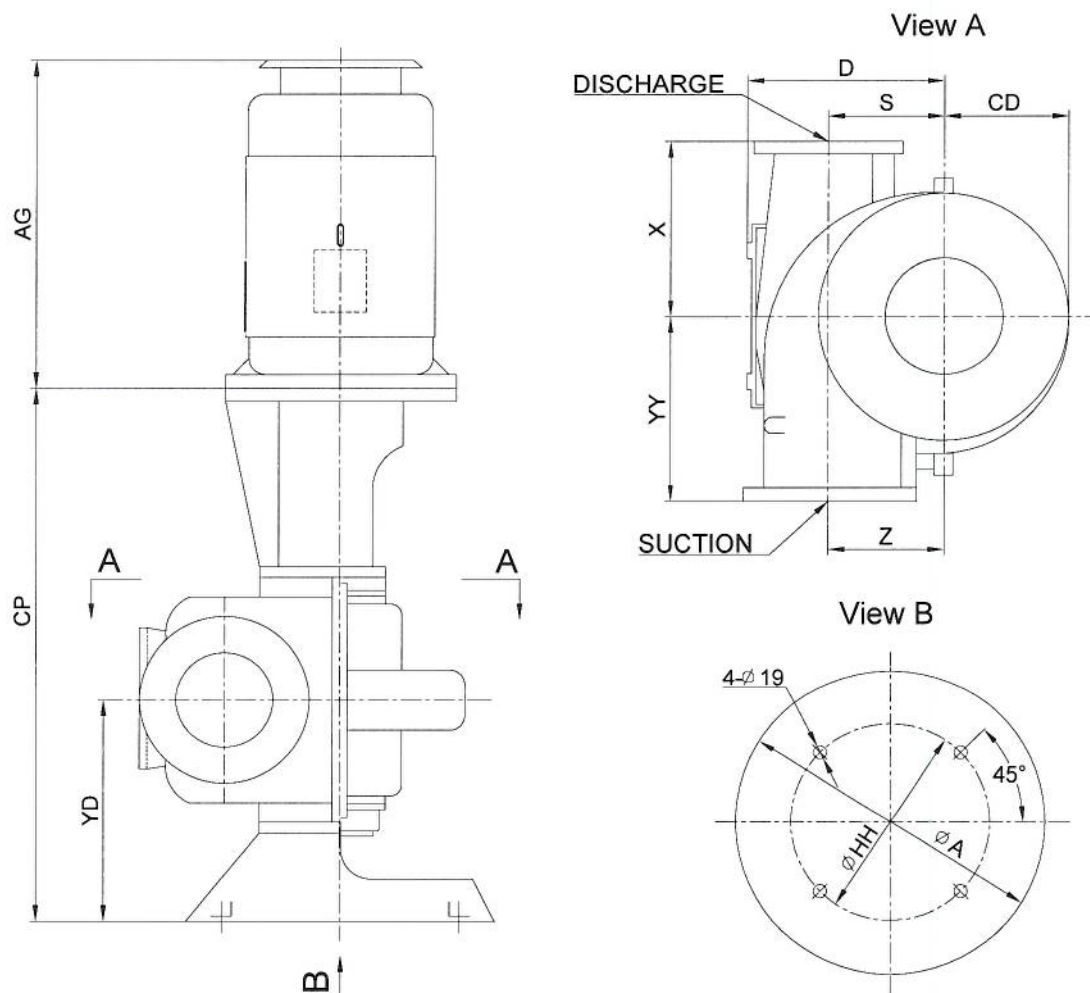
H(m)



NPSH(m)



MODEL 5015-9 FOOT MOUNTED PUMP
CAST IRON BASEPLATE DIMENSIONS



Pump Model	Motor	PUMP DIMENSIONS										WT. (KG)
		CP	YY	X	S/Z	D	YD	CD	A	HH	AG	
5015-9	225S-4	973	381	356	244	410	397	283	508	457	765	757

Explanation:

- 1.Suction size:6 inches; Discharge size:5 inches;
- 2.Flange standard: ANSI 125 LB;
- 3.The rotation direction (viewed from motor to pump) is clockwise;
- 4.Motor:225S-4,37KW,415V/3PH/50Hz,4 Poles.
- 5.Weight:Bare Pump:363kg,Motor:287kg.

Note:All dimensions are in [mm] unless other stated

Sales Order	
Item	
Rev.	0
Date	29/05/2013
Signature	