

| PACKAGED BOOSTER PUMP SCHEDULE |     |          |            |               |                  |           |              |                     |                   |       |
|--------------------------------|-----|----------|------------|---------------|------------------|-----------|--------------|---------------------|-------------------|-------|
| QTY.                           | TAG | LOCATION | PUMP       |               |                  |           |              |                     |                   | NOTES |
|                                |     |          | FLOW USGPM | WORKING FLUID | TOTAL HEAD (ft.) | NPSH (ft) | NO. OF PUMPS | DUTY/STAND/STAND BY | VOLTAGE/PHASE/Hz. |       |
| 1                              | P-1 | OUTSIDE  | 62         | WATER         | 77.18            | 49.33     | 2            | 1/1                 | 480/3/60          | 1-18  |

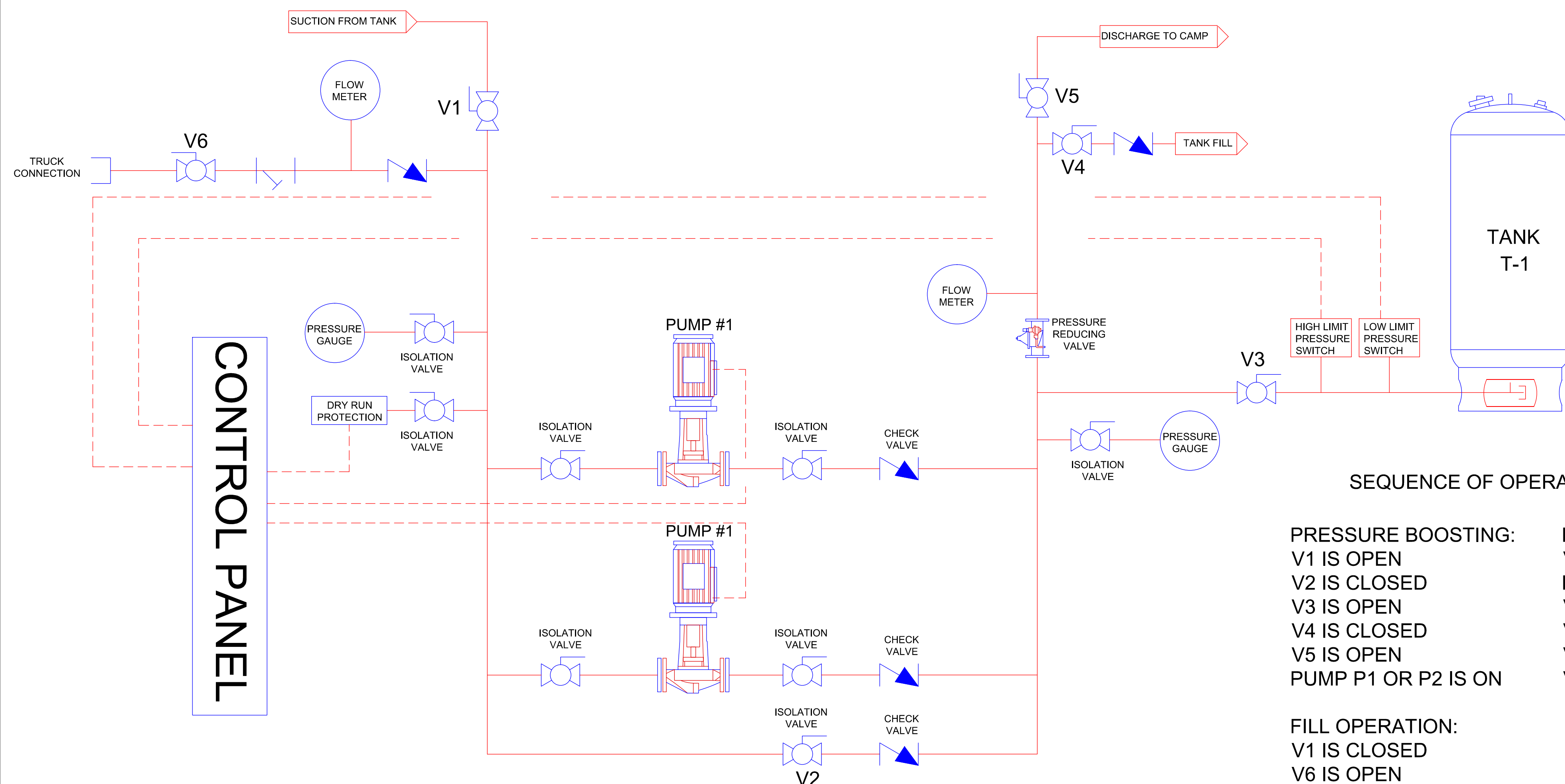
NOTES:

1. SINGLE STAGE VERTICAL IN-LINE CONFIGURATION
  2. 2-PUMP 1 DUTY / 1 STANDBY CONFIGURATION
  3. COMPLETELY ASSEMBLED, PROGRAMMED, INTEGRATED FACTORY TESTED PACKAGE
  4. NO FLOW SHUTDOWN
  5. PRESSURE SET-BACK
  6. EMERGENCY POWER FAILURE MODE
  7. OVERLOAD PROTECTION
  8. BEST OPERATING POINT SEQUENCING
  9. 24-HR CYCLING OF LEAD PUMP
  10. END-OF-CURVE PROTECTION
  11. BUILT-IN RUN/DELAY TIMERS AND RUN METERS
  12. HIGH-PRESSURE SHUTDOWN
  13. STORAGE TANK OPTIMIZATION
  14. ISO 9001 CERTIFIED FACILITY
  15. UL CERTIFIED
  16. SAFE DRINKING WATER ACT
  17. FACTORY TEST REPORT
  18. FLANGED CONNECTIONS

| COMPRESSION TANK SCHEDULE |     |               |                        |                        |                   |                 |                         |               |       |
|---------------------------|-----|---------------|------------------------|------------------------|-------------------|-----------------|-------------------------|---------------|-------|
| QTY.                      | TAG | LOCATION      | CAPACITY<br>( Gallons) | OVERALL HEIGHT<br>(in) | DIAMETER<br>( in) | WEIGHT<br>( lb) | MAX. PRESSURE<br>( psi) | MAX. TEMP. °F | NOTES |
| 1                         | T-1 | PUMP<br>HOUSE | 774                    | By Mfgr.               | By Mfgr.          | By Mfgr.        | 150                     | 122           | 1-4   |

NOTES:

1. ASME SECT. VIII
2. NSF LISTED BLADDER
3. FULL VOLUME FLEXIBLE ELASTOMER REPLACEABLE BAG
4. TANK BOTTOM SYSTEM CONNECTION



SEQUENCE OF OPERATION:

PRESSURE BOOSTING:

V1 IS OPEN  
V2 IS CLOSED  
V3 IS OPEN  
V4 IS CLOSED  
V5 IS OPEN  
PUMP P1 OR P2 IS ON

## BY-PASS OPERATION

V1 IS OPEN  
P1 AND P2 ARE OFF  
V2 IS OPEN  
V3 IS OPEN  
V4 IS CLOSED  
V5 IS OPEN

FILL OPERATION:

V1 IS CLOSED  
V6 IS OPEN  
V2 IS CLOSED  
V3 IS CLOSED  
V4 IS OPEN  
V5 IS OPEN  
PUMP P1 AND P2 ARE ON

## GENERAL NOTES

## REFERENCE DRAWINGS

[illegible]

## REVISIONS

[illegible]

## ENGINEERING/DESIGN RECORD

[illegible]