

R602.10.5.5 Blocking of roof framing. When parallel to roof framing, braced wall panels shall be connected to a band, rim or header joist, or roof truss. When perpendicular to roof framing, the top plates of exterior braced wall panels shall be connected to the rafters or roof trusses above in accordance with Table R602.10.5.5 and fastened in accordance with Table R602.3(1).

TABLE R602.10.5.5

BRACED WALL PANEL CONNECTIONS TO PERPENDICULAR ROOF FRAMING

DISTANCE FROM TOP OF BRACED WALL PANEL TO TOP OF RAFTER OR ROOF TRUSS, (in)	REQUIREMENT	REFERENCED FIGURE
< 9.25	No blocking required	NA
9.26 – 15.25	Solid 2x blocking between rafters or trusses	R602.10.5.5(1)
15.26 – 48	Vertical blocking panels	R602.10.5.5(2)
> 48	Designed in accordance with accepted engineering practice	NA

For SI: 1 inch = 25.4 mm

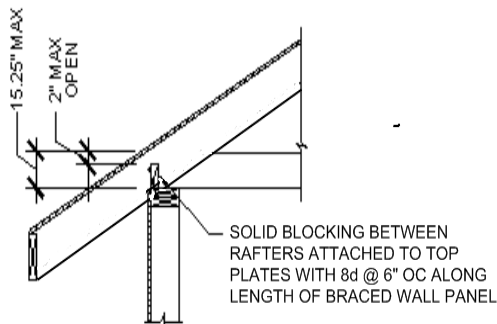
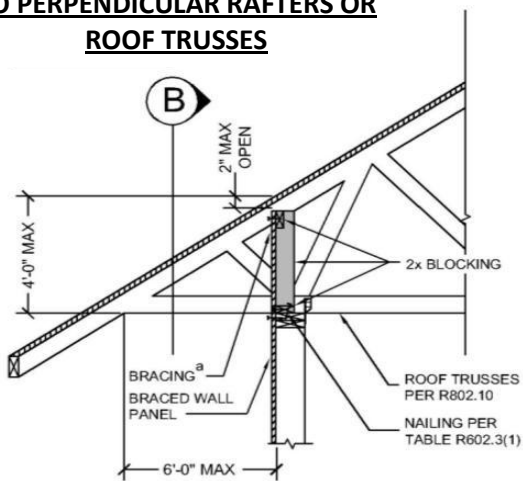


FIGURE R602.10.5.5(1)
BRACED WALL PANEL CONNECTION
TO PERPENDICULAR RAFTERS OR
ROOF TRUSSES



A SECTION

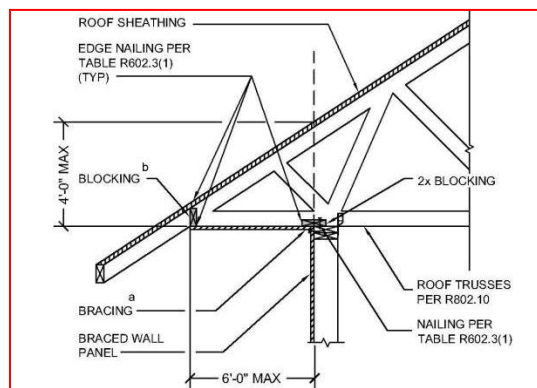
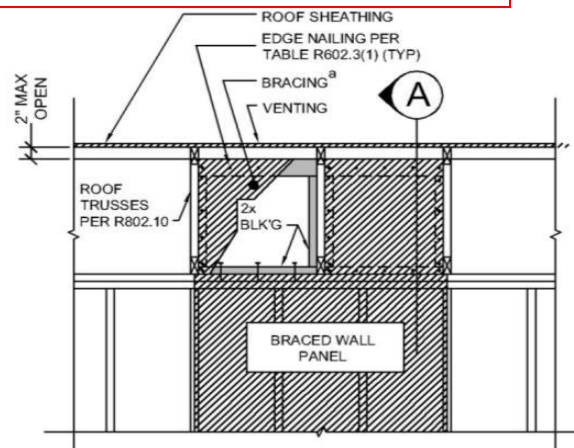


FIGURE CR602.10.5.5(3)
ALTERNATE TO FIGURE
R602.10.5.5(1) OR FIGURE
R602.10.5.5(2)

Note: Provide ventilation per Section R806



B ELEVATION

a. Methods of bracing shall be as described in Section R602.10.1.1

FIGURE R602.10.5.5(2)
BRACED WALL PANEL CONNECTION TO PERPENDICULAR RAFTERS OR TRUSSES