

	.03	A	B	C
	.014			

Note 3 applies  
Sep Req

	.02	B
	.014	

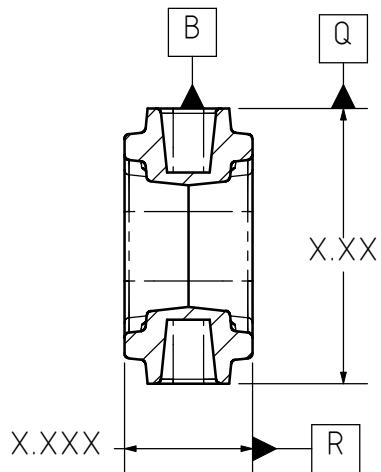
Note 3 applies

### Notes

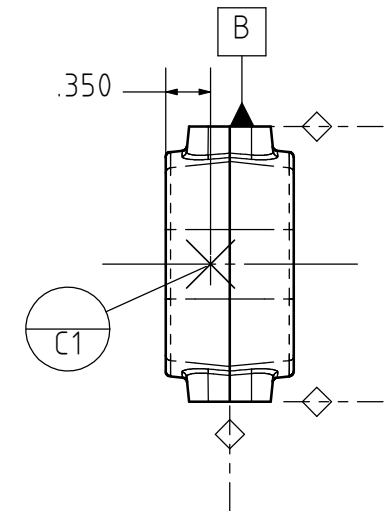
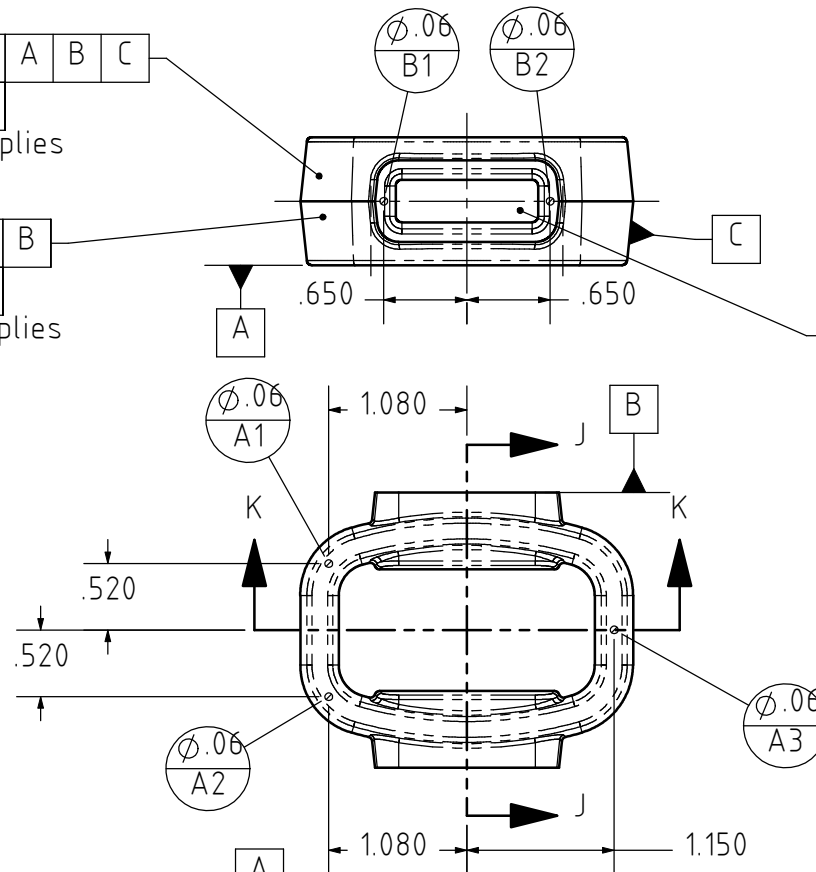
1. ASME Y14.5-2009
2. All dimensions, if shown, would be basic.
3. All features up to the parting lines, excluding mold flash and trimming.

	.02	A	C
	.014		

Note 3 applies

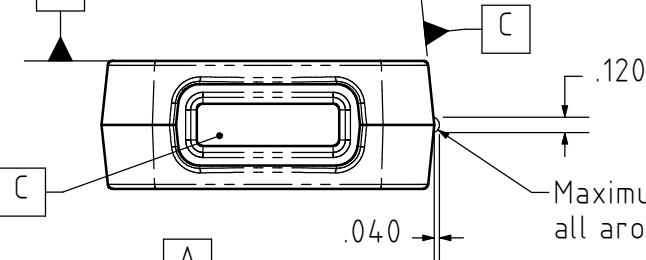


SECTION J-J

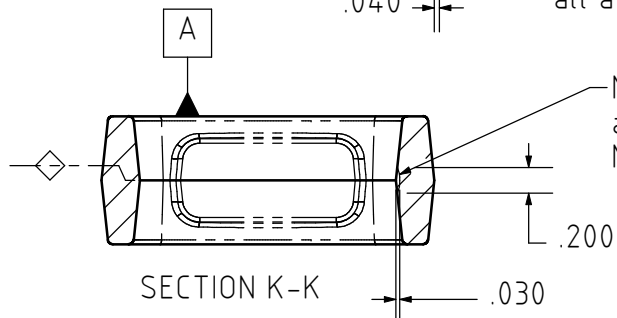
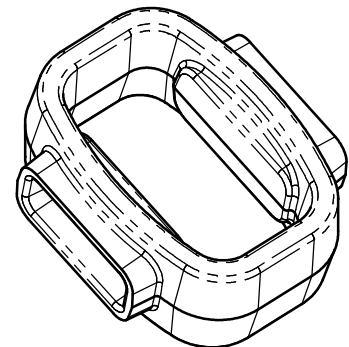


	.03	A	B	C
	.014			

Note 3 applies  
Sep Req



Maximum extent of flash extension  
all around this parting line



Maximum extent of flash trimming  
all around this parting line.  
No flash may protrude.

Part, Cool, Controversial  
Rev. 2