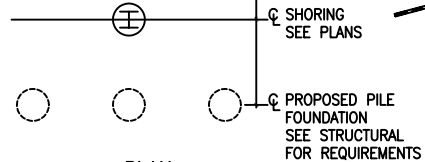
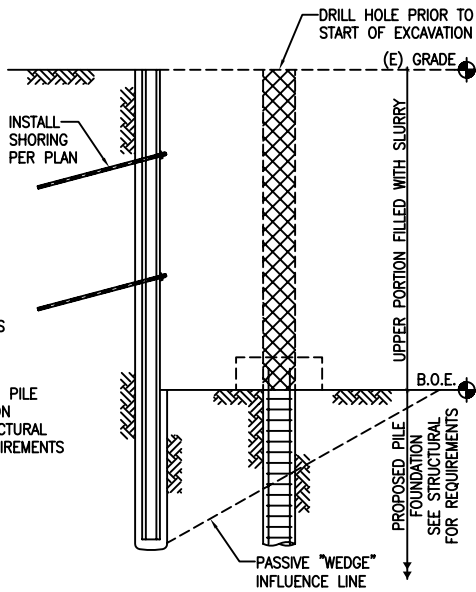


CONSULT GEOTECH FOR
CLEARANCE REQ'S AND PROVIDE
SPECIAL SEQUENCING AS REQ'D
IF NEW STRUCTURAL PILES ARE
TO BE INSTALLED WITHIN PASSIVE
INFLUENCE ZONE.



NOTE:
OPTION # 1 & 3 ALWAYS APPLY TO CANTILEVER
SHORING



ADDITIONAL TIEBACK,
BRACE, OR WALER
PROVIDED AT
BASE OF EXCAVATION
PRIOR TO DRILLING
OF PILE.
SEE ELEVATIONS

