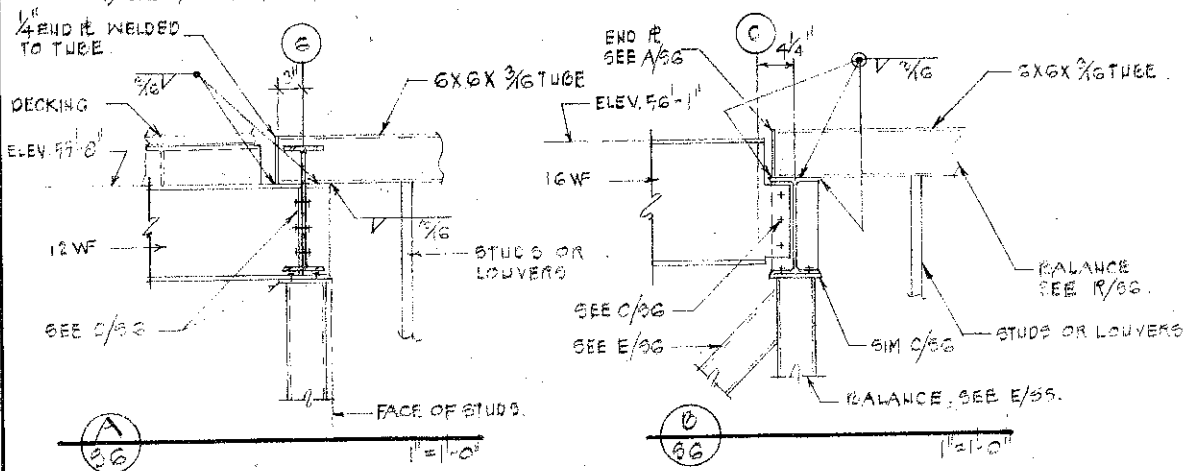
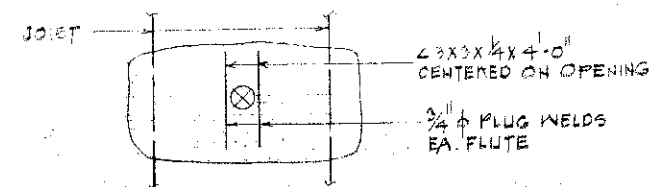


PENTHOUSE ROOF FRAMING NOTES.

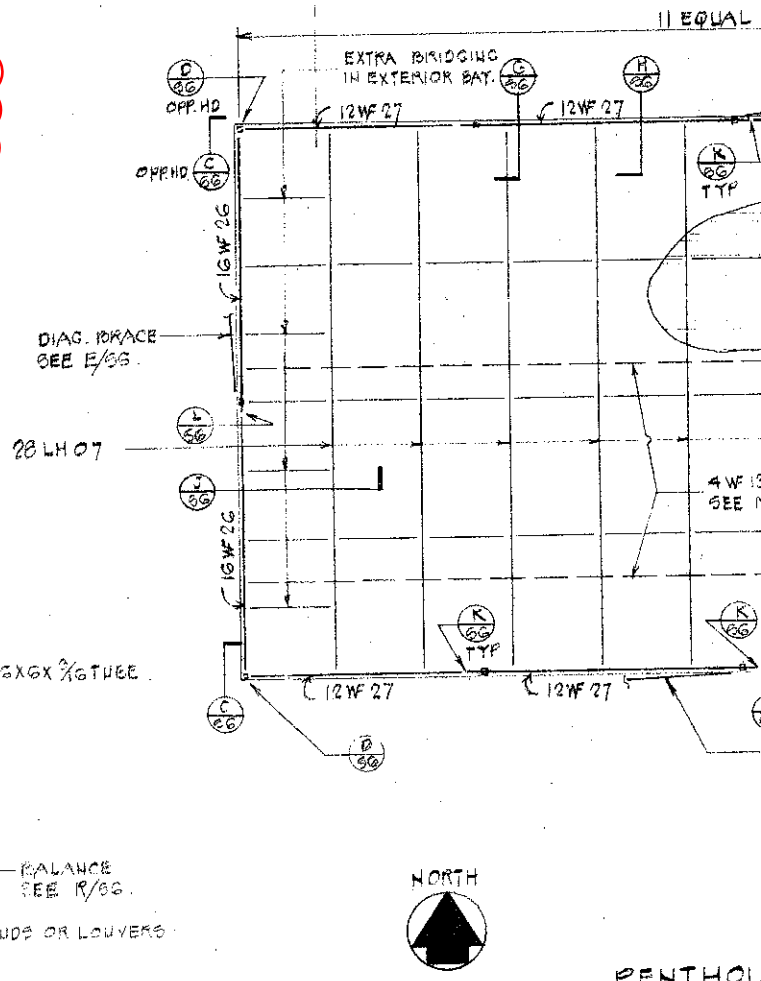
- 1) ROOF DECK SHALL BE 1/2" X 10 GAGE ROBERTSON "C" NO 3 OR INLAND TYPE "D" OR EQUAL STEEL DECK.
WELDING : (A) 3/4" ϕ PLUG WELDS PER 24" SECTION AT ALL SUPPORTS PERPENDICULAR TO THE FLUTES.
(B) 3/4" ϕ PLUG WELDS AT 12" O.C. ALONG SUPPORTS PARALLEL TO THE FLUTES.
(C) 1/2" BEAM WELDS AT 18" O.C. AT ALL BEAMS
- 2) HANGERS OR OTHER TYPE OF SUPPORTING ELEMENTS FOR MECHANICAL EQUIPMENT OR PIPING SHALL BE ATTACHED TO BOTTOM CHORD OF OPEN WEB JOISTS AT PANEL POINTS ONLY.
- 3) BRIDGING
JOIST BRIDGING SHALL BE 1 3/4" X 1 3/4" X 1/8" L'S BOLTED AT THE POINT OF INTERSECTION. CONNECTION TO JOISTS OR ROOF BEAMS SHALL BE WELDED OR BOLTED WITH A MIN. LOAD CAPACITY OF 1000 LBS. IF THESE CONNECTIONS ARE TO BE BOLTED USE 3/8" ϕ FRICTION TYPE HIGH STRENGTH BOLTS (A325) IN SLOTTED HOLES OR 1/2" ϕ MACHINE BOLT IN 9/16" ϕ BOLT HOLES. MACHINE BOLTS IN OVERSIZE OR SLOTTED HOLES SHALL NOT BE PERMITTED.
- 4) SEE M/S & N/S FOR FRAMING AT ROOF OPENINGS.



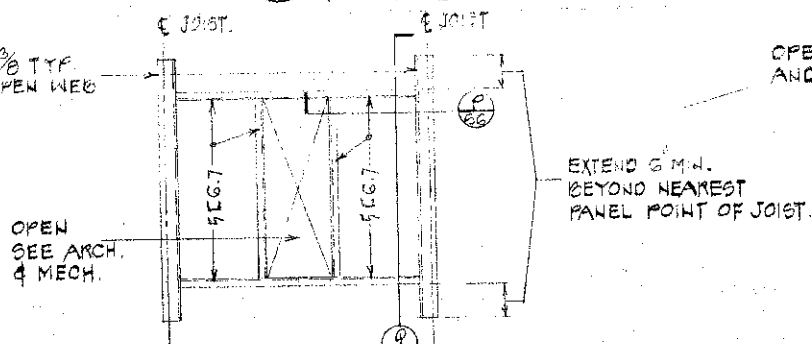
A SECTION AT ROOF JOIST



M PLAN - TYPICAL DETAIL AT OPENING 12" ϕ OR SMALLER



H SECTION BETWEEN ROOF JOISTS



N PLAN - TYPICAL FRAMING AROUND ROOF OPENING

BELAND, GIANELLI AND ASSOCIATES
LILLIS AND COOPER
ARCHITECTS AND PLANNERS IN ASSOCIATION
 2121 REDWOOD STREET, VALLEJO • CALIFORNIA (707) 644-4069

A.I.A.

BUTZBACH • BAR-DIN
 & DAGAN
 STRUCTURAL ENGINEERS
 814 MISSION ST. - SAN FRANCISCO, CALIF. 94105

APPROVED
 COUNTY OF SOLANO
 ARCHITECT
 CERTIFICATE NO.