

Performance Data

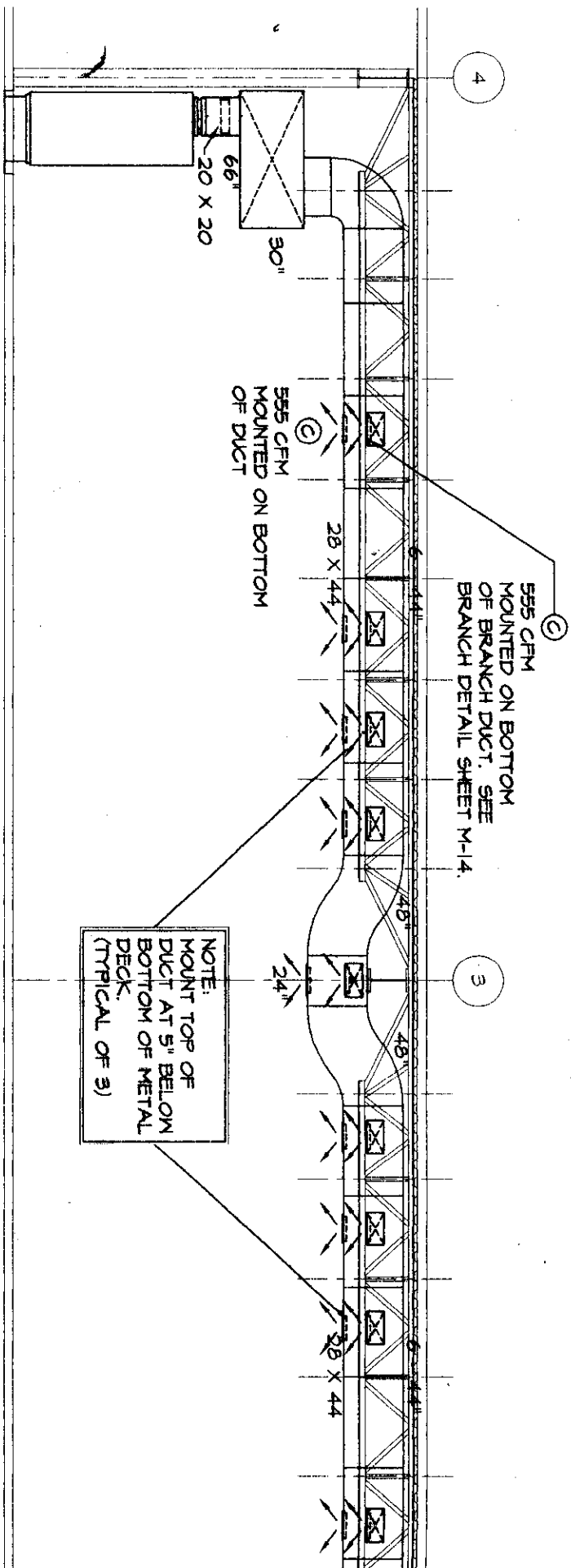
XC-310

Neck Velocity		400	500	600	700	800	900	1000	1200	1400	1600
Velocity Pressure		0.010	0.016	0.022	0.031	0.040	0.051	0.062	0.090	0.122	0.160
10" Dia.	Air Flow, cfm	220	270	330	380	435	490	545	655	765	870
	Total Pressure, H	0.021	0.033	0.047	0.064	0.083	0.105	0.130	0.187	0.255	0.333
	Total Pressure, V	0.012	0.019	0.027	0.037	0.048	0.061	0.076	0.109	0.148	0.194
	NC (Noise Criterion), H.	-	17	22	27	31	35	38	44	49	53
	NC (Noise Criterion), V.	-	14	19	24	28	32	35	41	46	50
	Throwfeet, H.	1-2-4	2-2-5	2-3-6	2-3-7	3-4-8	3-4-9	3-5-10	4-6-12	4-7-13	5-8-15
	Throw feet, V, 20F Cool Delta-T, 50 fpm	16	20	24	28	32	36	40	48	56	63
	Throw feet, V, 40F Heat Delta-T, 50 fpm	5	7	8	9	11	12	13	16	19	21
	Air Flow, cfm	315	390	470	550	630	705	785	940	1100	1255
	Total Pressure, H	0.021	0.032	0.046	0.063	0.083	0.104	0.129	0.186	0.253	0.330
12" Dia.	Total Pressure, V	0.012	0.019	0.028	0.038	0.050	0.063	0.078	0.113	0.153	0.200
	NC (Noise Criterion), H.	11	18	23	28	32	36	39	45	50	54
	NC (Noise Criterion), V.	-	15	20	25	29	33	36	42	47	51
	Throwfeet, H.	2-2-5	2-3-6	2-3-7	3-4-8	3-5-9	3-5-10	4-6-12	5-7-14	5-8-16	6-9-18
	Throw feet, V, 20F Cool Delta-T, 50 fpm	14	20	24	28	33	36	41	49	57	65
	Throw feet, V, 40F Heat Delta-T, 50 fpm	4	6	8	9	11	12	14	16	19	22
	Air Flow, cfm	425	530	635	745	850	955	1060	1270	1490	1695
	Total Pressure, H	0.020	0.032	0.046	0.063	0.082	0.103	0.128	0.184	0.250	0.327
	Total Pressure, V	0.012	0.018	0.028	0.038	0.050	0.063	0.078	0.113	0.153	0.200
	NC (Noise Criterion), H.	12	19	24	29	33	37	40	46	51	55
14" Dia.	NC (Noise Criterion), V.	-	16	21	26	30	34	37	43	48	52
	Throwfeet, H.	2-3-5	2-3-7	3-4-8	3-5-9	4-5-11	4-6-12	4-7-13	5-8-16	6-9-19	7-11-21
	Throw feet, V, 20F Cool Delta-T, 50 fpm	13	20	26	31	35	39	44	52	61	70
	Throw feet, V, 40F Heat Delta-T, 50 fpm	4	6	8	10	12	13	15	17	20	23
	Air Flow, cfm	710	885	1060	1240	1420	1590	1770	2120	2480	2830
	Total Pressure, H	0.020	0.031	0.045	0.061	0.079	0.101	0.124	0.179	0.243	0.318
	Total Pressure, V	0.011	0.017	0.028	0.038	0.050	0.063	0.078	0.113	0.153	0.200
	NC (Noise Criterion), H.	13	20	26	31	35	38	42	47	52	56
	NC (Noise Criterion), V.	-	17	23	28	32	35	39	44	49	53
	Throwfeet, H.	2-3-7	3-4-9	3-5-10	4-6-12	5-7-14	5-8-16	6-9-17	7-10-21	8-12-24	9-14-28
18" Dia.	Throw feet, V, 20F Cool Delta-T, 50 fpm	14	21	30	37	42	47	53	63	74	84
	Throw feet, V, 40F Heat Delta-T, 50 fpm	4	6	9	12	14	16	18	21	25	28
	Air Flow, cfm	875	1100	1310	1530	1750	1970	2190	2610	3060	3500
	Total Pressure, H	0.020	0.031	0.044	0.060	0.078	0.099	0.122	0.176	0.239	0.312
	Total Pressure, V	0.010	0.016	0.028	0.038	0.050	0.063	0.078	0.113	0.153	0.200
	NC (Noise Criterion), H.	14	21	26	31	35	39	42	48	53	57
	NC (Noise Criterion), V.	11	18	23	28	32	36	39	45	50	54
	Throwfeet, H.	3-4-8	3-5-10	4-6-12	4-7-13	5-8-15	6-9-17	6-10-19	8-11-23	9-13-21	10-15-31
	Throw feet, V, 20F Cool Delta-T, 50 fpm	14	23	32	40	46	52	57	68	80	92
	Throw feet, V, 40F Heat Delta-T, 50 fpm	4	7	9	13	15	17	19	23	27	31
20" Dia.	Air Flow, cfm	1260	1570	1880	2200	2510	2820	3140	3770	4400	5026
	Total Pressure, H	0.019	0.029	0.042	0.057	0.075	0.095	0.117	0.169	0.230	0.300
	Total Pressure, V	0.010	0.014	0.028	0.038	0.050	0.063	0.078	0.113	0.153	0.200
	NC (Noise Criterion), H.	15	22	27	32	36	40	43	49	54	58
	NC (Noise Criterion), V.	12	19	24	29	33	37	40	46	51	55
	Throwfeet, H.	3-5-9	4-6-12	5-7-14	5-8-16	6-9-18	7-10-21	8-12-23	9-14-28	11-16-32	12-18-37
	Throw feet, V, 20F Cool Delta-T, 50 fpm	16	25	35	47	54	60	67	81	94	107
	Throw feet, V, 40F Heat Delta-T, 50 fpm	5	7	10	14	18	20	22	27	31	36
	Air Flow, cfm	1963	2454	2945	3436	3927	4418	4909	5890	6872	7854
	Total Pressure, H	0.017	0.027	0.039	0.053	0.069	0.088	0.108	0.156	0.213	0.278
24" Dia.	Total Pressure, V	0.009	0.014	0.020	0.027	0.036	0.045	0.056	0.081	0.110	0.144
	NC (Noise Criterion), H.	16	23	29	34	38	41	45	50	55	59
	NC (Noise Criterion), V.	13	20	26	31	35	38	42	47	52	56
	Throwfeet, H.	4-6-12	5-7-14	6-9-17	7-10-20	8-12-23	9-13-26	10-14-29	12-17-35	13-20-40	15-23-46
	Throw feet, V, 20F Cool Delta-T, 50 fpm	19	29	42	57	66	74	82	99	115	132
	Throw feet, V, 40F Heat Delta-T, 50 fpm	2	3	5	7	9	11	14	20	25	28
	Air Flow, cfm	2827	3534	4241	4948	5655	6362	7069	8482	9896	11310
	Total Pressure, H	0.016	0.024	0.035	0.048	0.063	0.079	0.098	0.141	0.191	0.250
	Total Pressure, V	0.007	0.012	0.017	0.023	0.030	0.038	0.046	0.067	0.091	0.119
	NC (Noise Criterion), H.	17	24	30	35	39	42	46	51	56	60
36" Dia.	NC (Noise Criterion), V.	14	21	27	32	36	39	43	48	53	57
	Throwfeet, H.	5-7-14	6-9-17	7-10-21	8-12-24	9-14-28	10-16-31	12-17-35	14-21-41	16-24-48	18-28-55
	Throw feet, V, 20F Cool Delta-T, 50 fpm	22	34	49	67	78	88	98	117	137	156
	Throw feet, V, 40F Heat Delta-T, 50 fpm	1	2	3	4	5	6	8	11	15	20
	Throw feet, V, 40F Heat Delta-T, 50 fpm	1	2	3	4	5	6	8	11	15	20

- All pressures are in inches of water.
- Radius of diffusion values are given for a terminal velocity of 50 fpm with a 20°F cooling temperature differential.
- Vertical projection values are given for a terminal velocity of 50 fpm. Minimum projections are for a 40°F heating temperature differential, while maximum projections are for a 20°F cooling differential.

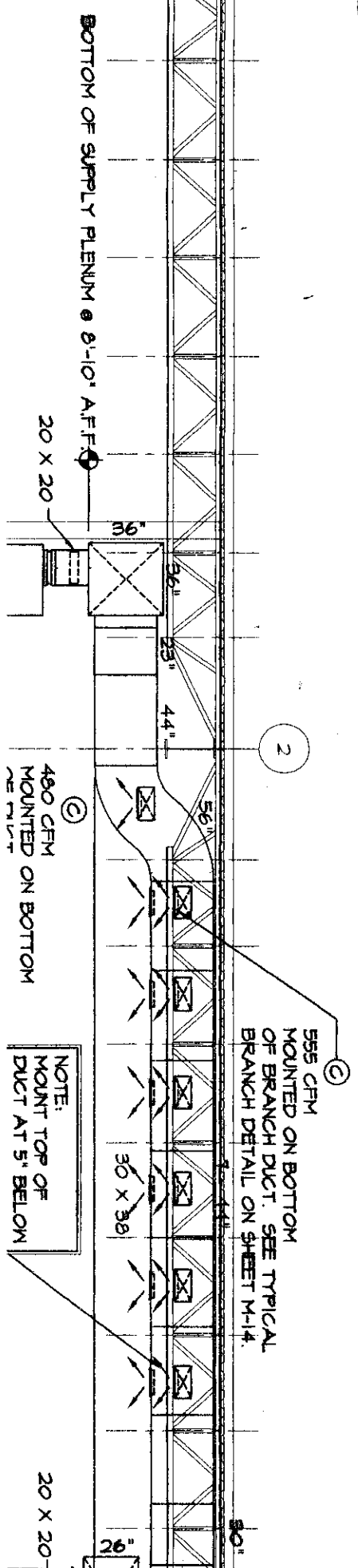
- NC values are based on a room absorption of 10 dB, re 10⁻¹² watts. Values shown are for the horizontal discharge pattern (center closed). For the vertical pattern (center open), subtract three.

- Data obtained from tests conducted in accordance with ANSI/ASHRAE Standard 70-1991. Actual performance, with flexible duct inlet, may vary in the field. See the Engineering Guidelines section of this catalog for additional information.



NOTE:
MOUNT TOP OF
DUCT AT 5" BELOW
BOTTOM OF METAL
DECK.
(TYPICAL OF 3)

1 DETAIL "1" @ COMPUTER ROOM UNIT CR-3 THRU CR-8A
SCALE: 1/4" = 1'-0"



Sheet M-3

