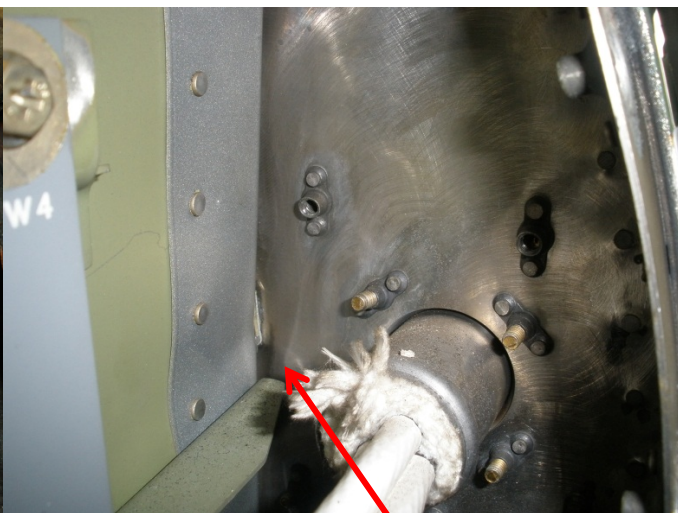


Deformation surrounding upper R/H engine frame attachment to firewall.

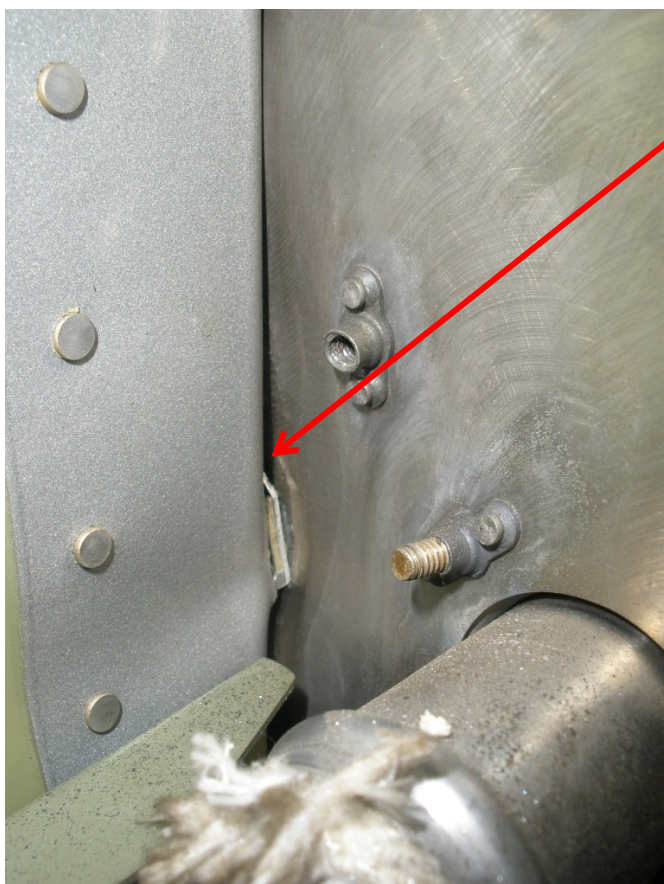


Deformation of doubler of upper R/H engine frame attachment point



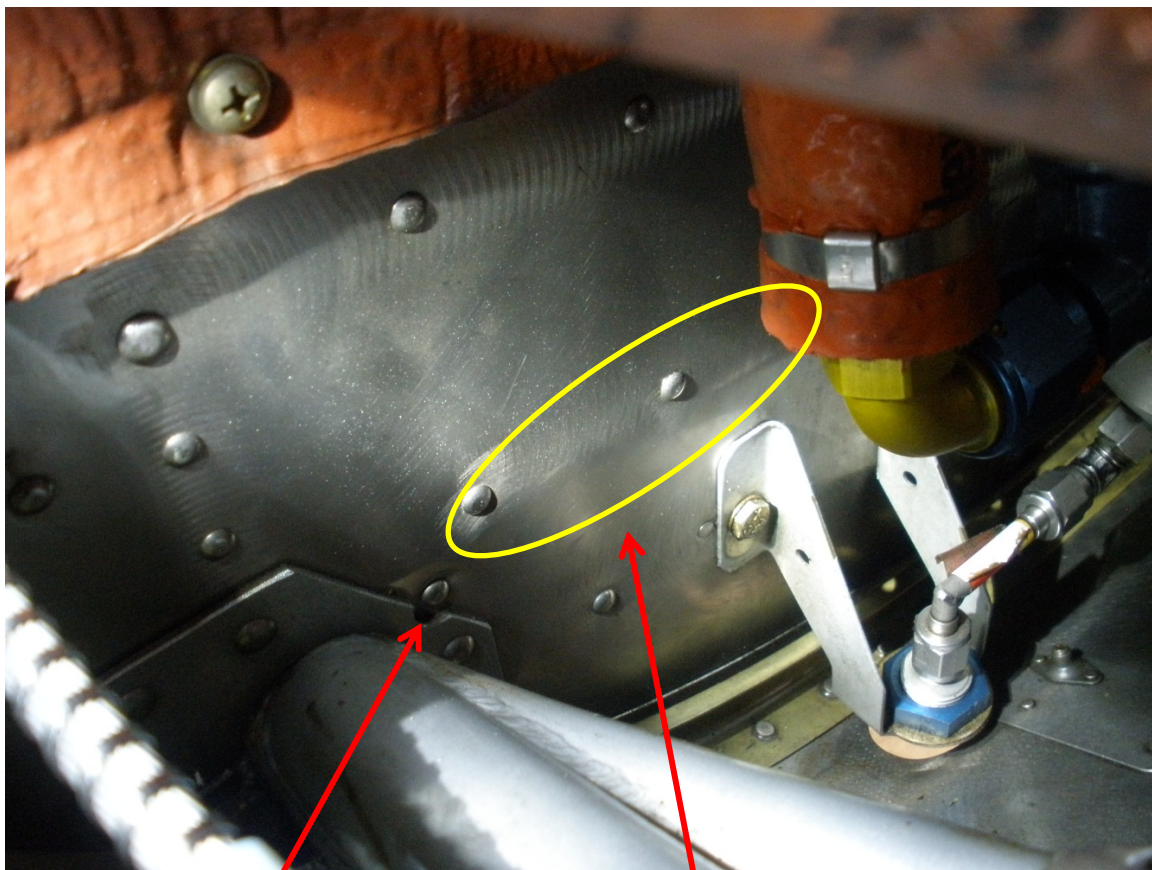


Rear side of firewall behind upper R/H engine
frame attachment point

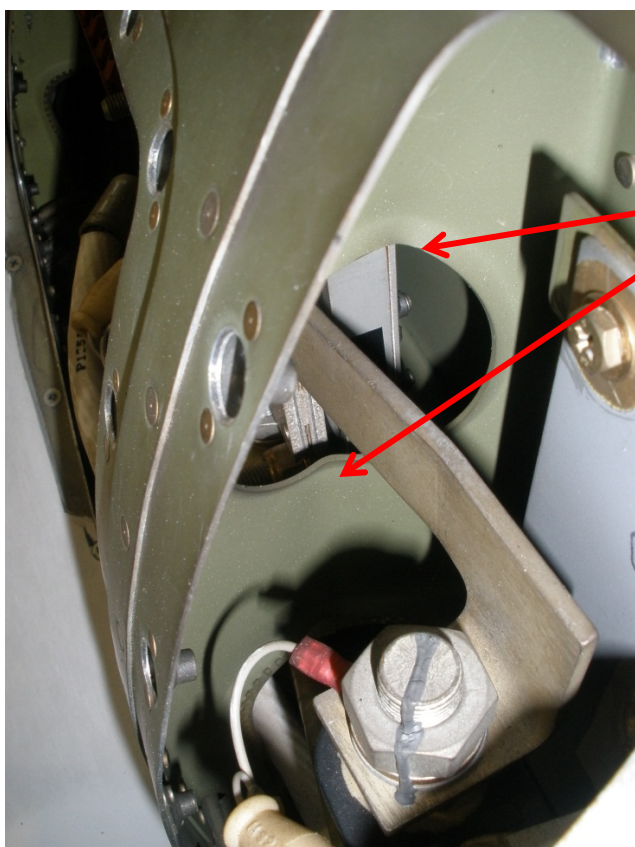


Further down above angle, on rear
side of firewall R/H side



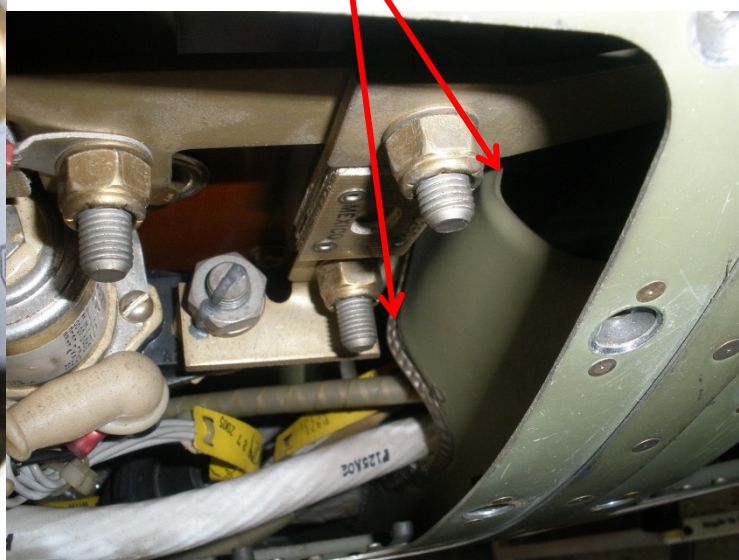


Rivet pulled in and creasing evident around lower R/H engine frame attachment point to firewall.



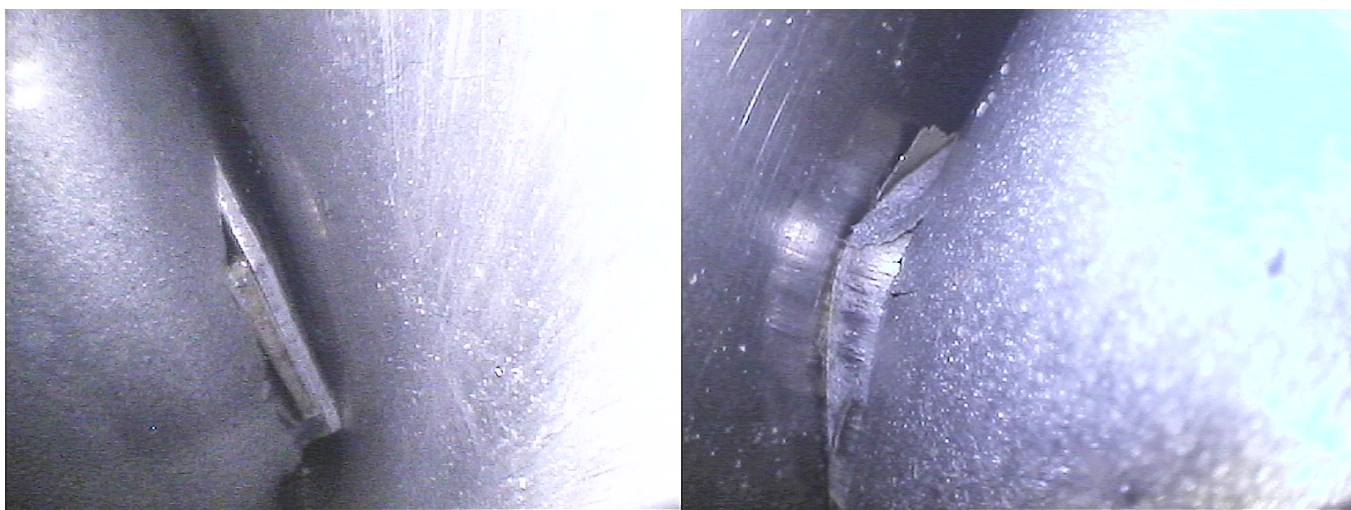
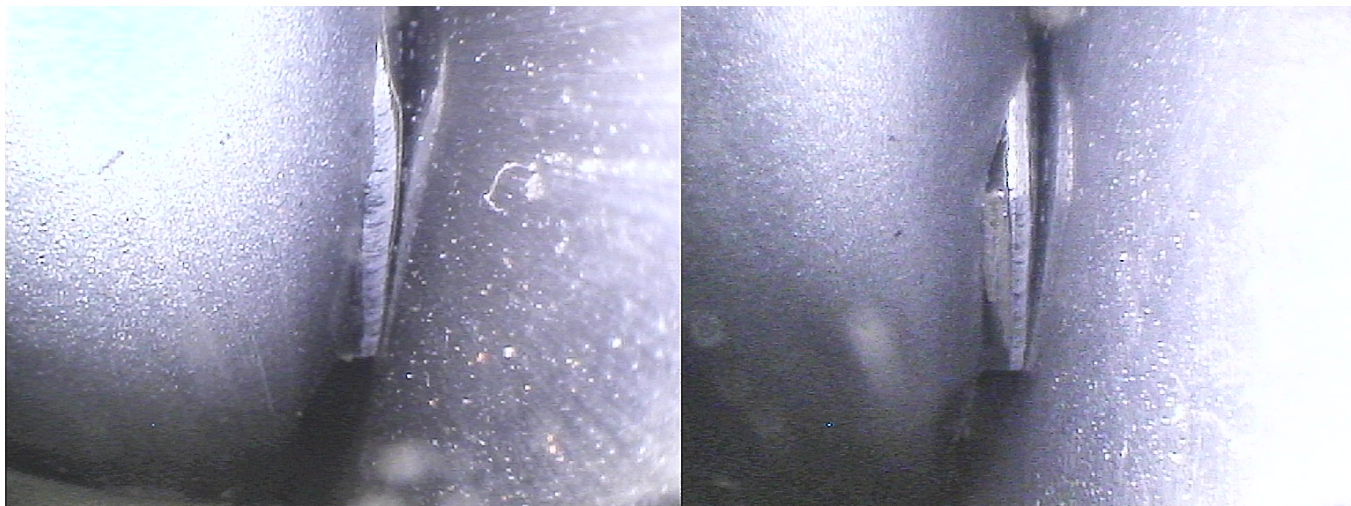
Forward View

Next frame back from firewall R/H side on engine nacelle.



Rear View

More pictures of rear side of firewall showing torn metal attachment points. View is magnified as pictures were taken with a borescope. Looking at LH Nacelle box where it connects aft of the firewall.



Chaffing mark on stringer through frame on engine nacelle.

