



Photograph 1:



Photograph 2: Horizontal crack in window pane (indicated by red arrow). Heavy condensation build up between panes is indicated by yellow arrow.



Photograph 3: Interior view of horizontal crack in window pane.



Photograph 4: Window is leaned inward by as much as a measured 0.7 degrees.





Photograph 5: No apparent separation between window frame and brick veneer.



Photograph 6: No apparent separation between window frame and brick veneer. No tears in caulk.



Photograph 7: Gaps between brick sill and window.



Photograph 8: No apparent movement between top of window and bottom of rowlock coursing above window.





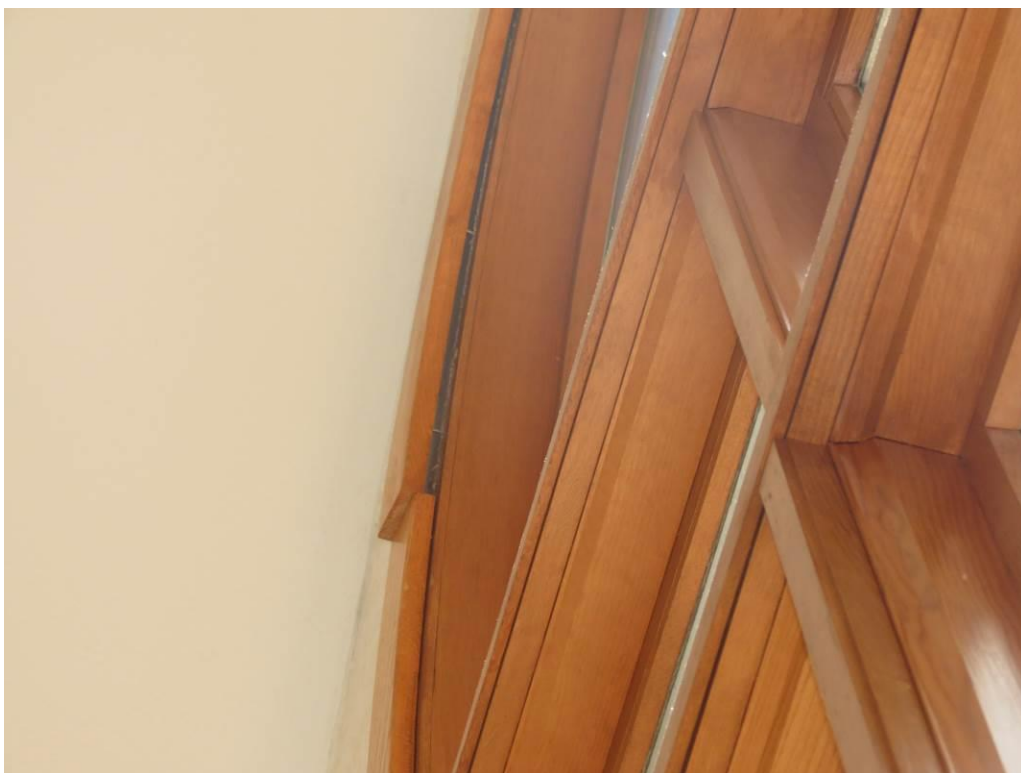
Photograph 9: Interior view.



Photograph 10: Condensation build up. Black staining in area of wood rot (yellow arrow).



Photograph 11: Staple pop (indicated).



Photograph 12: Popped-off paneling.