A photograph of a concrete curb with a dark metal post. The concrete shows several cracks, including a prominent vertical one and a horizontal one. The background consists of dark gravel on the left and wood mulch on the right.

DCP_3479

Clearly expansion
cracks

4. 9. 2009



DCP_3480

Barely visible
shrinkage crack

4. 9. 2009

4.9.2009

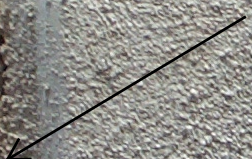
DCP_3481
Shrinkage crack
exacerbated by
expansion



4.9.2009

DCP_3484

Expansion crack
at control joint



Expansion



Expansion



DCP_3487

Shrinkage crack
exacerbated by
expansion



4. 9. 2009

DCP_3489

Expansion

Expansion

Shrinkage crack
exacerbated by
expansion

4. 9. 2009