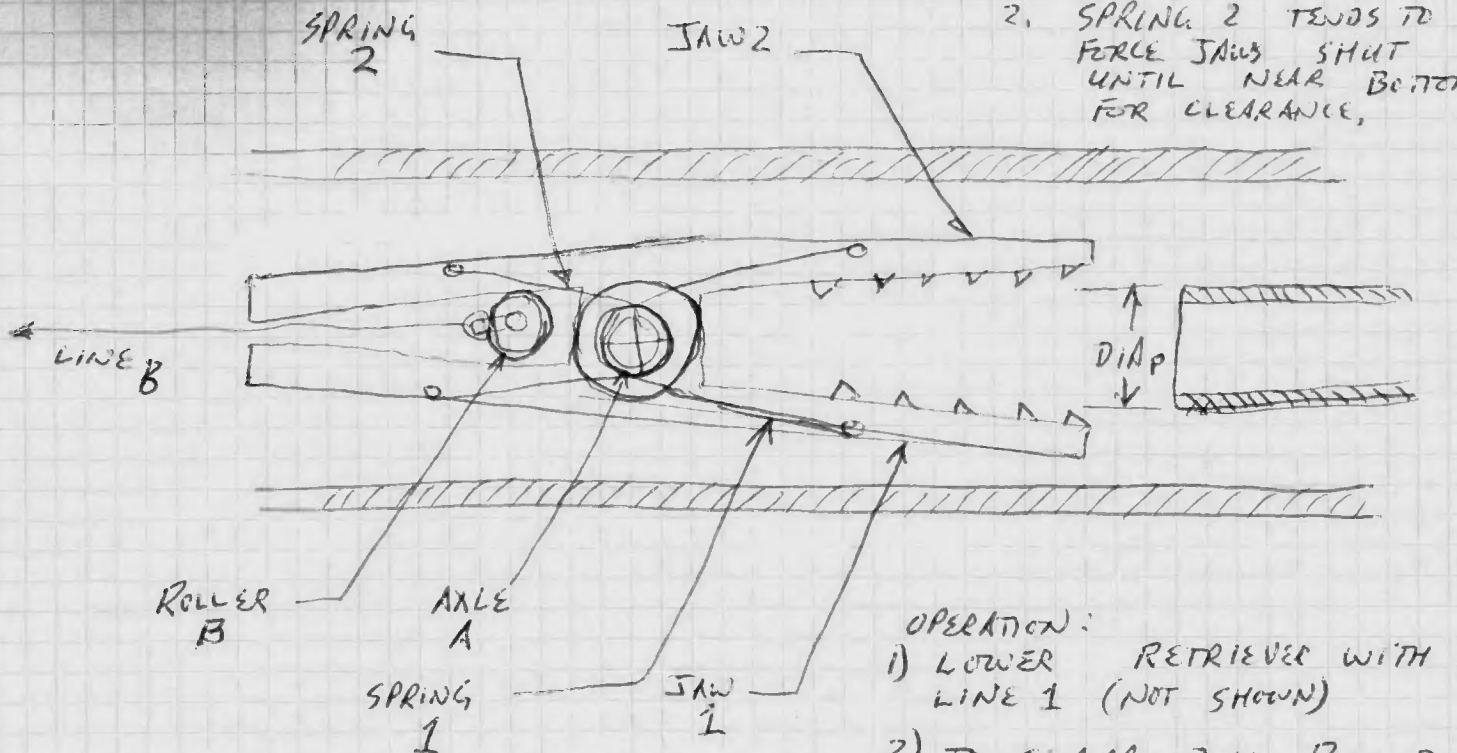


NOTES: SPRING 2 HOLDS
JAWS₁, JAWS₂ OPEN,
PIVOTING ON AXLE A,
2. SPRING 2 TENDS TO
FORCE JAWS SHUT
UNTIL NEAR BOTTOM,
FOR CLEARANCE,



OPERATION:
1) LOWER RETRIEVER WITH
LINE 1 (NOT SHOWN)
2) TO CLAMP, PULL ROLLER_B
WITH LINE B.

ROBERT COOK
TMD, 770-315-3934
PIPELINE RETRIEVER SKETCH