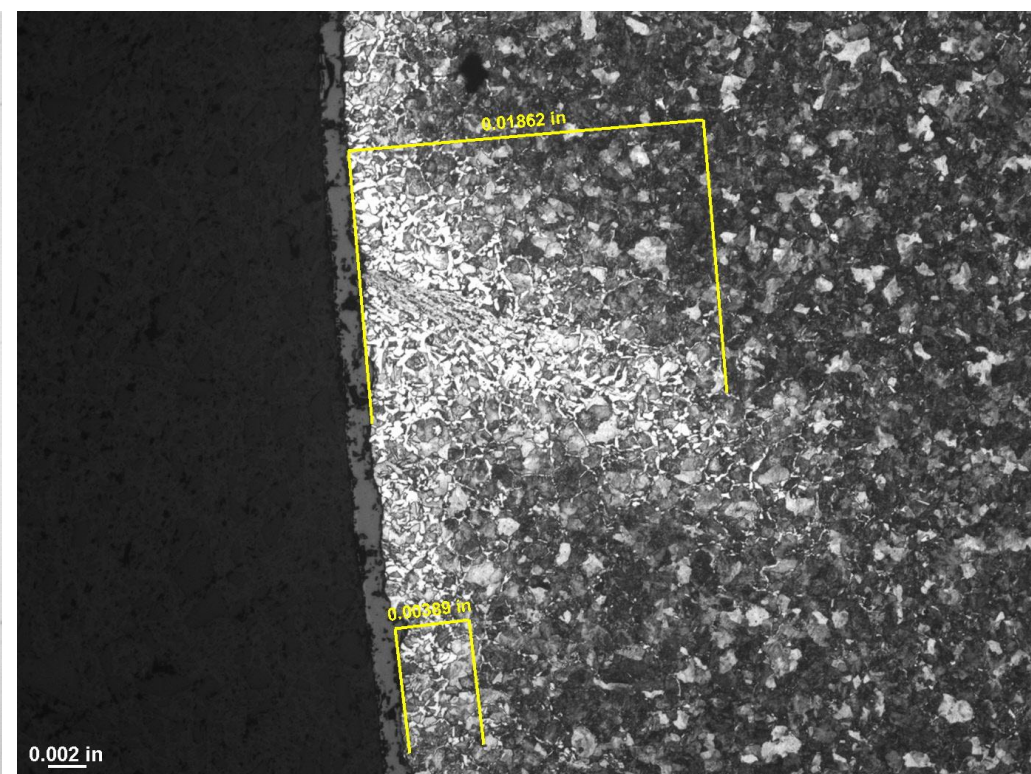
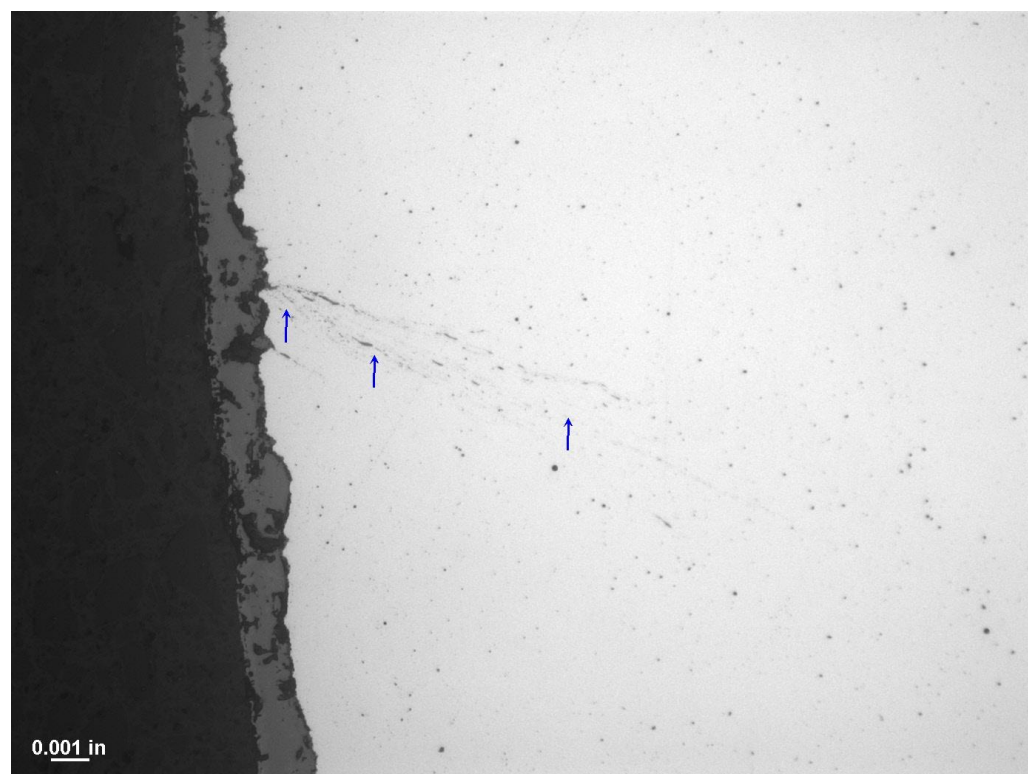


Views of rolled-in scale in polished (left photo, 200x) and etched (right photo, 100x) condition.  
The defect is heavily decarburized and penetrates to approximate depth 0.017".



Additional views of rolled-in scale in polished (left photo, 200x) and etched (right photo, 100x) condition.

The defect is heavily decarburized and penetrates to approximate depth 0.018”.

A thin decarburized layer of roughly 0.003-0.004” was visible around the full perimeter.