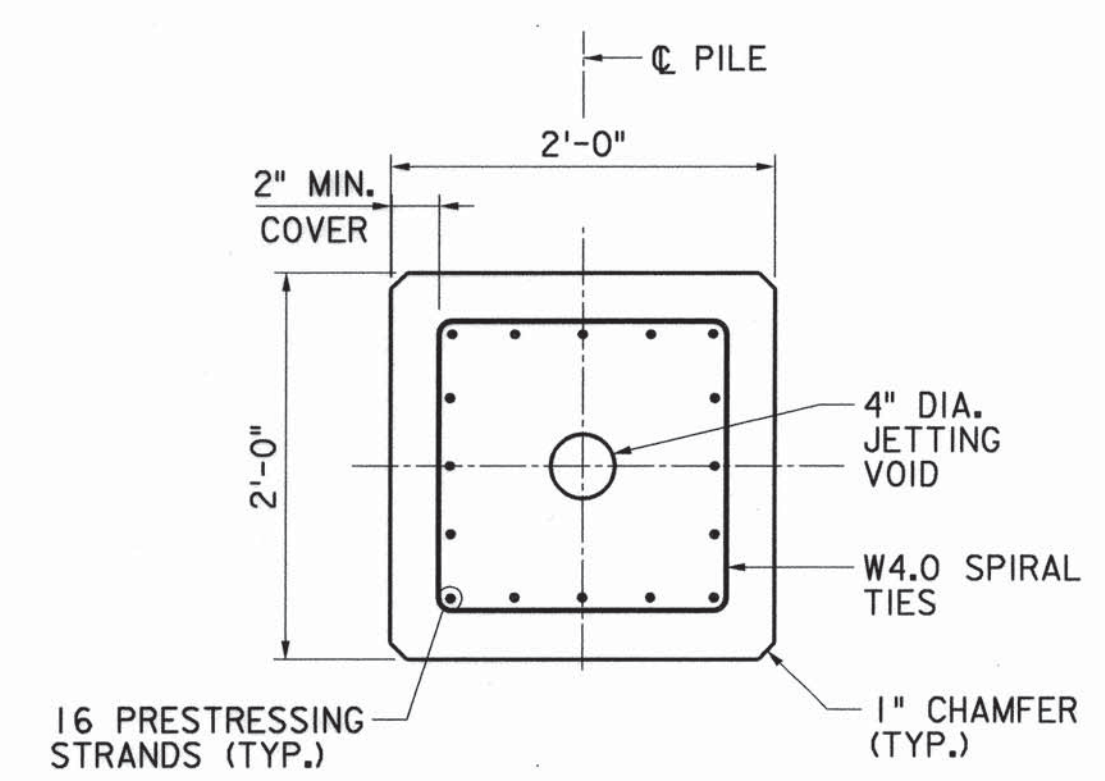
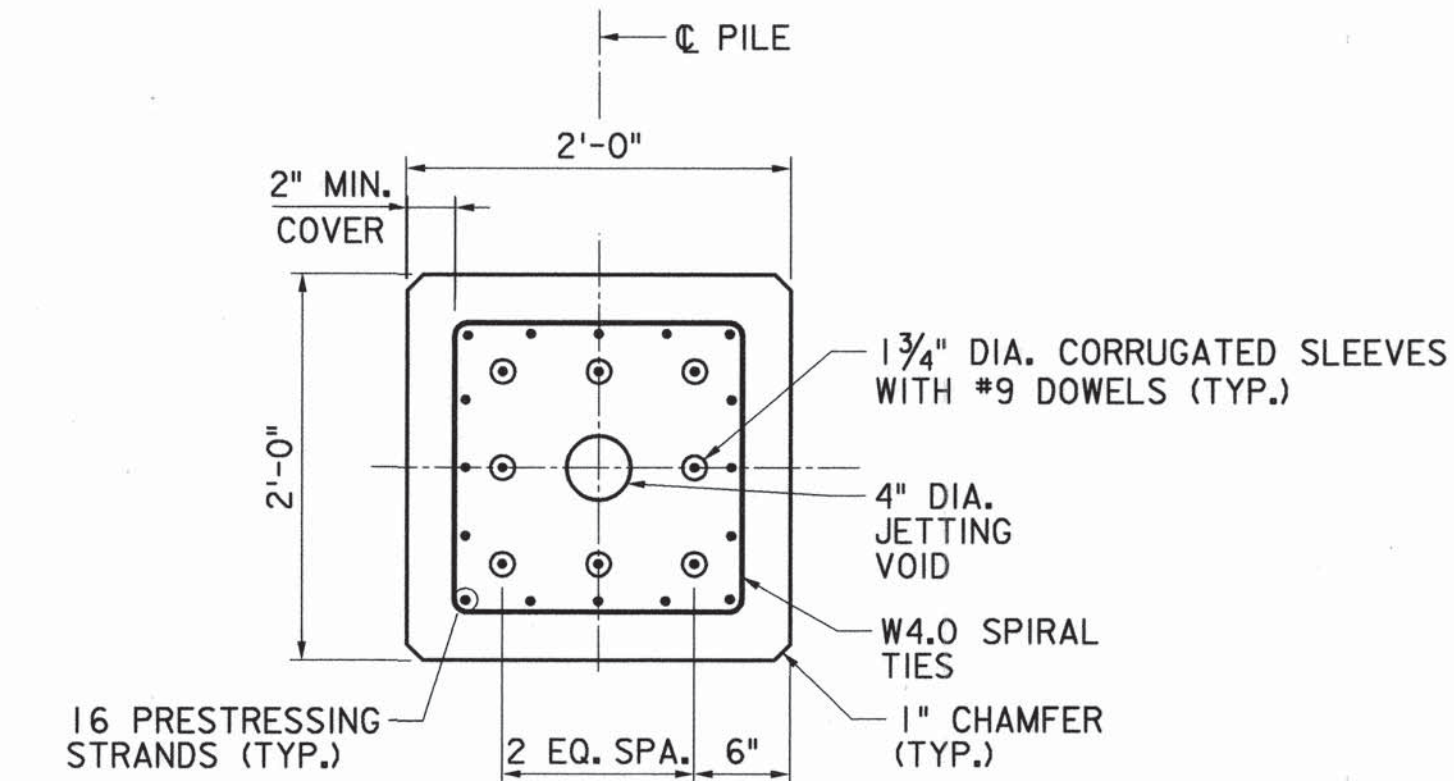


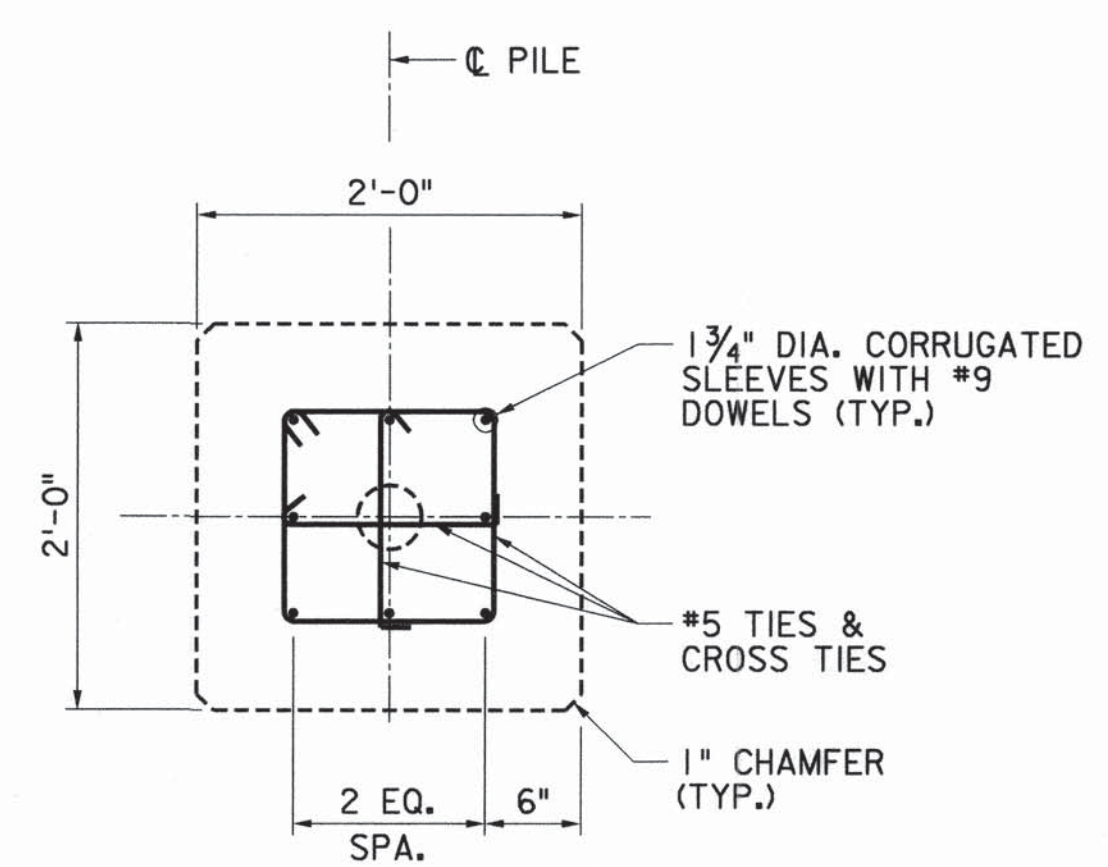
PILE ELEVATION
1" = 1'-0"



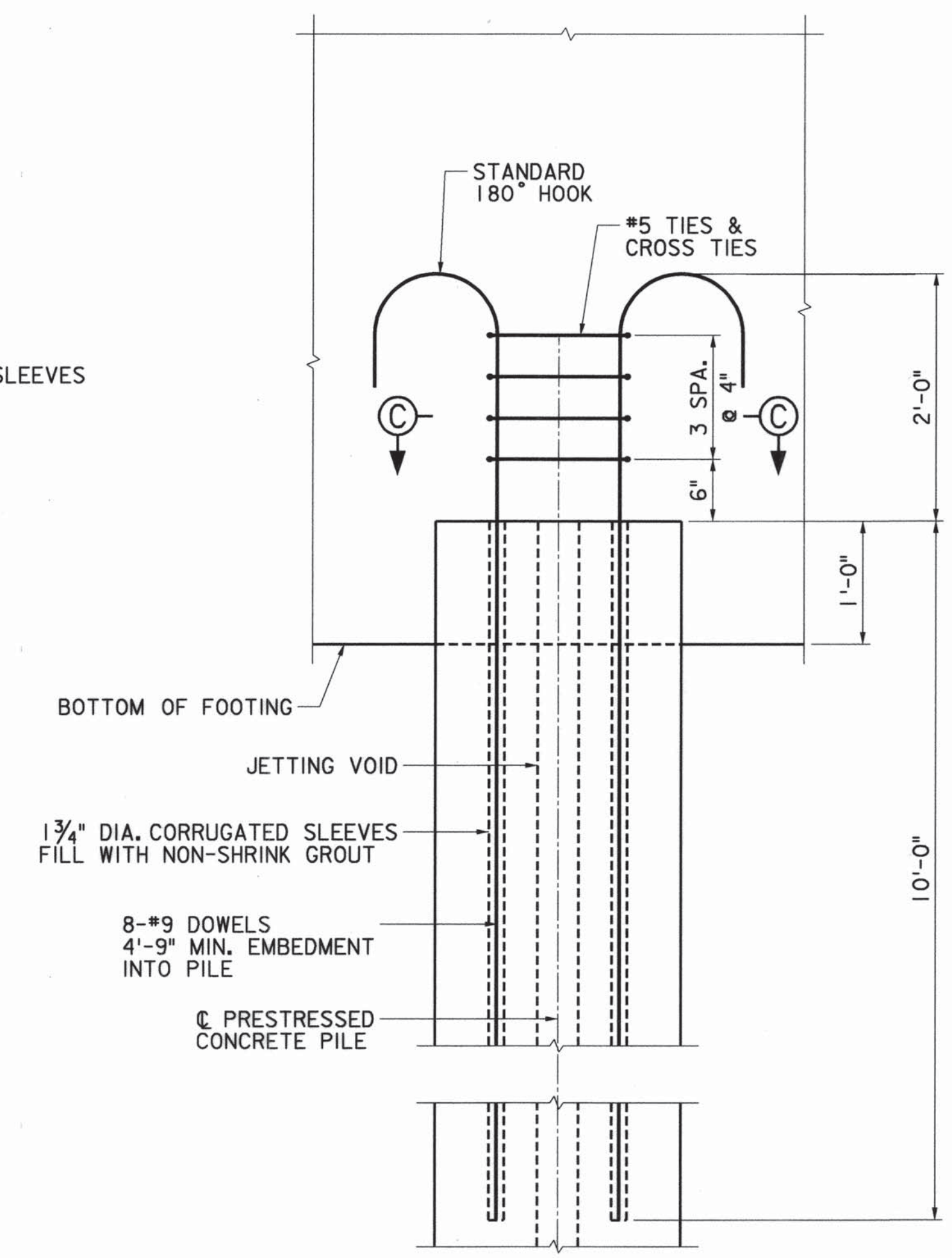
SECTION A-A
1" = 1'-0"



SECTION B-B
1" = 1'-0"



SECTION C-C
1" = 1'-0"



PILE DETAIL AT PILE CAP
1" = 1'-0"

CORRUGATED SLEEVE LENGTH IS PROVIDED TO ALLOW THE MINIMUM DEVELOPMENT OF DOWELS WITH ROOM FOR PILE CUTOFF. THE CONTRACTOR MAY ADJUST THIS LENGTH TO ACCOMMODATE THEIR PILE DRIVING SYSTEM.

NOTES:

- DESIGN PRESTRESSED CONCRETE COMPRESSIVE STRENGTH SHALL BE A MINIMUM OF 5500 PSI. CONCRETE SHALL BE CLASS P WITH CALCIUM NITRITE CORROSION INHIBITOR AS SPECIFIED IN SECTION 906.06 OF THE SPECIFICATIONS.
- COMPRESSIVE STRENGTH OF CONCRETE BEFORE RELEASE OF STRANDS SHALL BE 4000 PSI.
- THE PRESTRESSING STRANDS SHALL CONSIST OF 1/2 INCH DIAMETER HIGH TENSILE STRENGTH SEVEN-WIRE STRANDS CONFORMING TO AASHTO M203 (ASTM A416), GRADE 270, WITH SUPPLEMENTAL REQUIREMENTS FOR LOW RELAXATION STRANDS. STRANDS SHALL BE GRIT IMPREGNATED EPOXY COATED ACCORDING TO ASTM A882.
- MAXIMUM PERMISSIBLE DRIVING STRESSES ON THE GROSS CONCRETE AREA FOR THESE PILES CONSIDERING THE SEVERE MARINE ENVIRONMENT, EQUALS 3.7 KSI IN COMPRESSION AND 0.9 KSI IN TENSION.
- ALL PRESTRESSED PILES SHALL BE INSTALLED TO BOTH THE MINIMUM TIP ELEVATION AND THE REQUIRED NOMINAL DRIVING RESISTANCE SPECIFIED ON THE PILE DATA PLAN SHEET. IT SHALL BE THE CONTRACTOR'S RESPONSIBILITY TO CONSTRUCT THE PILE AT THE PROPER LOCATION AND TO MINIMUM TIP ELEVATION AND REQUIRED NOMINAL DRIVING RESISTANCE SPECIFIED ON THE PILE DATA PLAN SHEET USING WHATEVER MEANS AND METHODS DETERMINED ACCEPTABLE AND VERIFIED BY DRIVING THE TEST PILES AND AS APPROVED BY THE ENGINEER.
- ALL NON-PRESTRESSED REINFORCEMENT SHALL BE EPOXY COATED.
- SPIRAL REINFORCEMENT SHALL CONFORM TO AASHTO M32M EPOXY COATED.
- FOR PILE DRIVING INFORMATION, TIP ELEVATIONS, PILE RESISTANCES, AND PILE LOAD TESTS, SEE SHEET S-12.
- NONSHRINK GROUT SHALL CONFORM TO ASTM C1107 AND SHALL BE AS PER SECTION 905.13 OF THE STANDARD SPECIFICATIONS.
- PILES ARE TO BE MANUFACTURED IN ACCORDANCE WITH THE DIMENSIONAL TOLERANCES SPECIFIED HERE AND IN THE PCI MANUAL FOR QUALITY CONTROL. PILES NOT CONFORMING TO THE TOLERANCES SHALL BE SUBJECT TO REJECTION AND WILL NOT BE PAID FOR.
- COST OF DOWELS AND ASSOCIATED REBARS AND NON-SHRINK GROUT USED TO CONNECT THE PILES TO THE PILE CAP SHALL BE INCLUDED IN THE COST OF THE PAY ITEM "DRIVING 24" X 24" PRESTRESSED CONCRETE PILE".

