

Nonlinear Static

Load Case Data Notes

Modify/Show Notes...

Load Case Type

Static

Design...

Conditions - Start from Unstressed State

State at End of Nonlinear Case

Note: Loads from this previous case are included in the current

Analysis Type

- ☐ Linear
- ☐ Nonlinear (Allow Uplift)
- ☒ Nonlinear (Cracked)
- ☐ Nonlinear (Long Term Cracked)

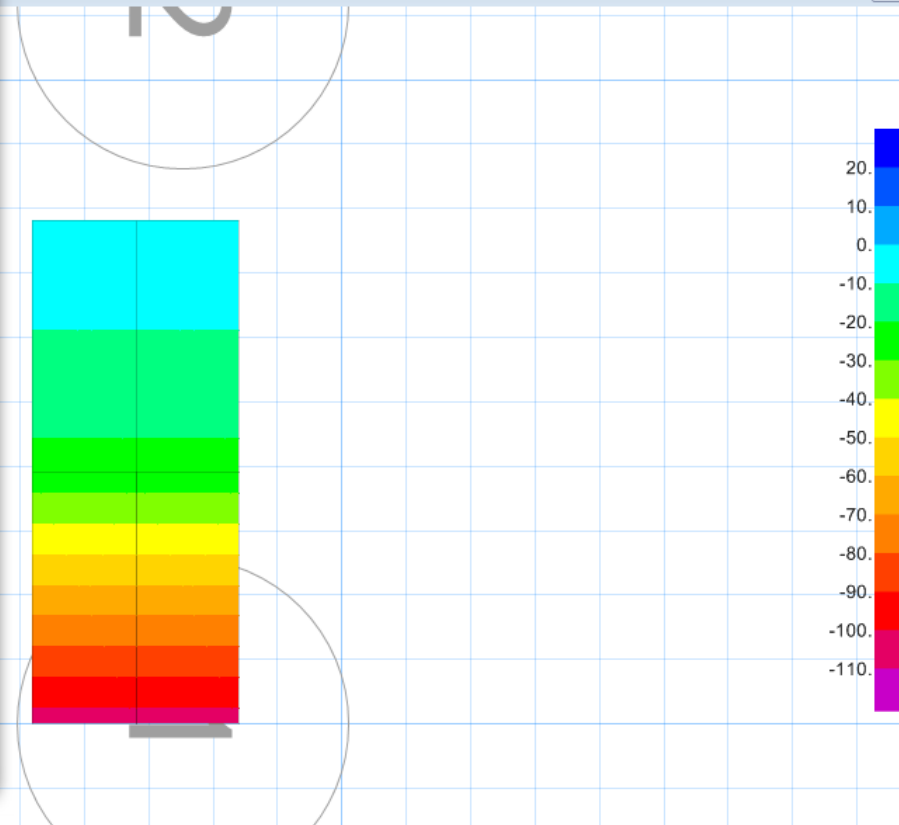
Creep Coefficient

Shrinkage Strain

OK

Cancel

Load Name	Scale Factor
	1.

Max = 0.00 kN/m² at [3.20000 m, 1.95000 m]; Min = -105.21 kN/m² at [3.20000 m, 0.00000 m]

X 1.05000, Y 1.82500, Z 0.00000 (m)

<< >> GLOBAL

kN-m