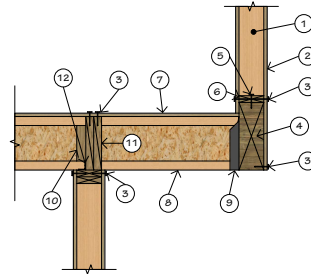


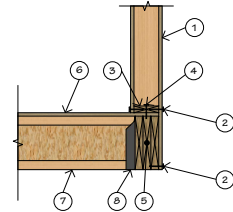
- 1 2X6 STUD WALL
- 2 SHEAR PLY OR DOUBLE SHEAR PER PLAN PER PLAN
- 3 E.N. FLOOR PLY @ RIM
- 4 E.N. SHEAR PLY @ BLKG
- 5 (2) 1 1/4" LSL RIM OR 1 1/4" LSL RIM & SOLID BLOCK
- 6 16d @ 6" O.C.
- 7 2X SILL
- 8 E.N. AT DOUBLE SHEAR
- 9 DOUBLE SHEAR WHERE OCCURS PER PLAN
- 10 A35 @ 16" O.C. AT DOUBLE SHEAR
- 11 FLOOR PLY PER PLAN
- 12 FLOOR JOIST PER PLAN

1 TYPICAL SHEAR TRANSFER @ FLOOR  
3/4" = 1'-0"



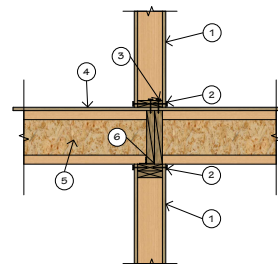
- 1 2X6 STUD WALL
- 2 SHEAR PLY OR DOUBLE SHEAR PER PLAN PER PLAN
- 3 EDGE NAIL
- 4 BEAM PER PLAN
- 5 16d NAILING:  
6" O.C. @ 4" O.C. @  
3" O.C. @ 2" O.C. @  
(2) ROWS @ DOUBLE SHEAR
- 6 2X SILL
- 7 FLOOR PLY PER PLAN
- 8 FLOOR JOISTS PER PLAN
- 9 HANGER PER PLAN
- 10 PLYWOOD WEB STIFFENER PER MANUF. SPECS
- 11 1 3/4" LVL @ SHEAR WALL USE (2) AT DOUBLE SHEAR
- 12 A35 @ 16" O.C. USE (2) AT DOUBLE SHEAR

2 SHEAR TRANSFER @ CANTILEVER  
3/4" = 1'-0"



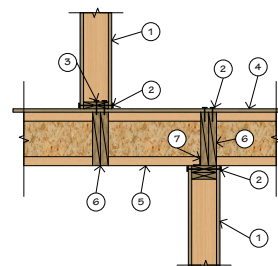
- 1 SHEAR PLY OR DOUBLE SHEAR PER PLAN PER PLAN
- 2 EDGE NAIL
- 3 2X SILL
- 4 16d NAILING:  
6" O.C. @ 4" O.C. @  
3" O.C. @ 2" O.C. @  
(2) ROWS @ DOUBLE SHEAR
- 5 JOISTS OR BEAMS PER PLANS
- 6 FLOOR PLY PER PLAN
- 7 FLOOR JOISTS PER PLAN
- 8 HANGER PER PLAN

3 SHEAR TRANSFER  
3/4" = 1'-0"



- 1 SHEAR PLY OR DOUBLE SHEAR PER PLAN PER PLAN
- 2 EDGE NAIL
- 3 16d NAILING:  
6" O.C. @ 4" O.C. @  
3" O.C. @ 2" O.C. @  
(2) ROWS @ DOUBLE SHEAR
- 4 FLOOR PLY PER PLAN
- 5 FLOOR JOIST PER PLAN
- 6 1 3/4" LVL @ SHEAR WALL USE (2) AT DOUBLE SHEAR
- 7 A35 @ 16" O.C. USE (2) AT DOUBLE SHEAR

4 SHEAR TRANSFER @ INTERIOR  
3/4" = 1'-0"



- 1 SHEAR PLY OR DOUBLE SHEAR PER PLAN PER PLAN
- 2 EDGE NAIL
- 3 16d NAILING:  
6" O.C. @ 4" O.C. @  
3" O.C. @ 2" O.C. @  
(2) ROWS @ DOUBLE SHEAR
- 4 FLOOR PLY PER PLAN
- 5 FLOOR JOIST PER PLAN
- 6 1 3/4" LVL @ SHEAR WALL USE (2) AT DOUBLE SHEAR
- 7 A35 @ 16" O.C. USE (2) AT DOUBLE SHEAR

5 SHEAR TRANSFER @ OFFSET  
3/4" = 1'-0"