

Product advantages mobile crane

LTM 1500-8.1

Max. lifting capacity: 500 t at 3 m radius

Max. height under hook: 145 m with lattice luffing jib

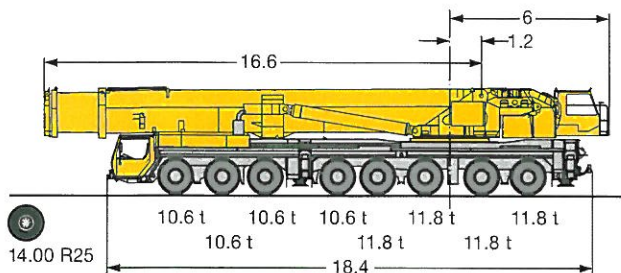
Max. radius: 108 m with lattice luffing jib



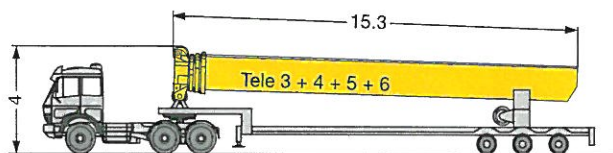
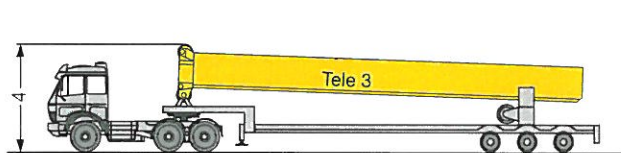
LIEBHERR

The variable telescoping boom system

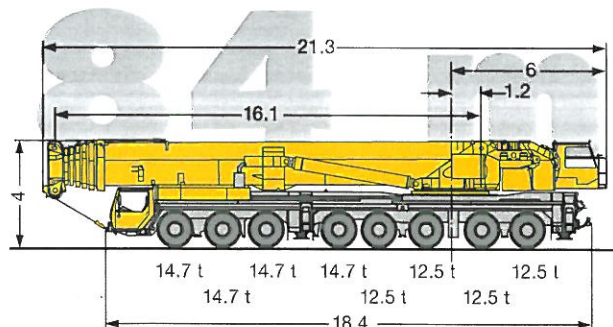
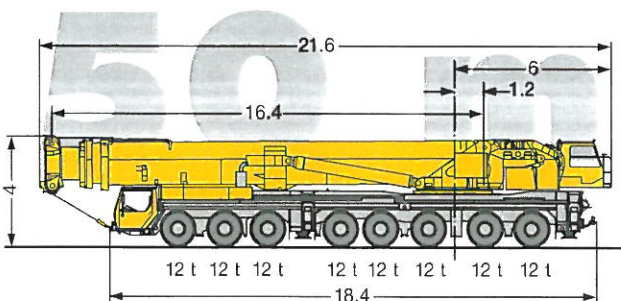
- 96 t total weight incl. 50 m telescopic boom and permanent outrigger system
- Boom change device with hoisting and displacement mechanism on low loader
- Quick Connection for the dismantling of the telescopic boom (10 t axle load)
- Quick Connection for the dismantling of the superstructure (6 t axle load)



+ or +

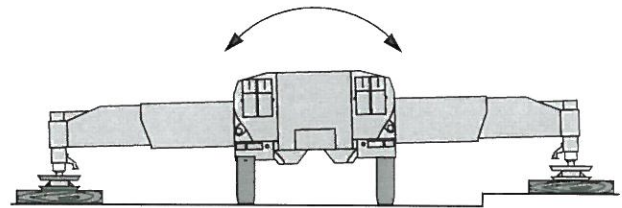
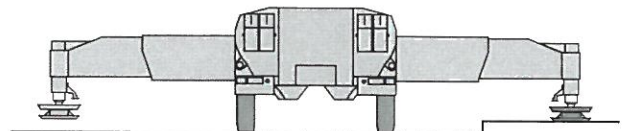
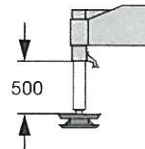
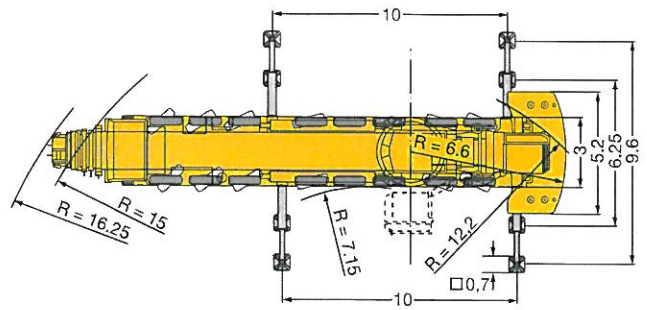
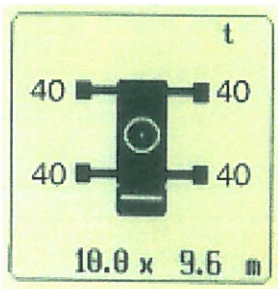
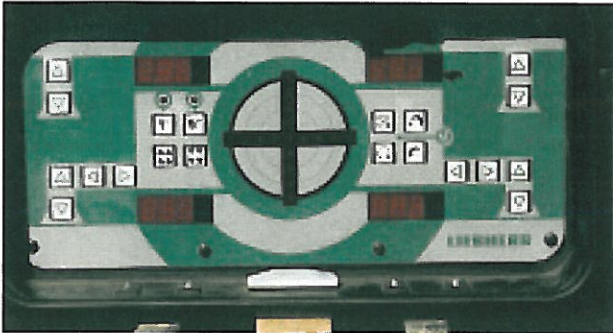


=



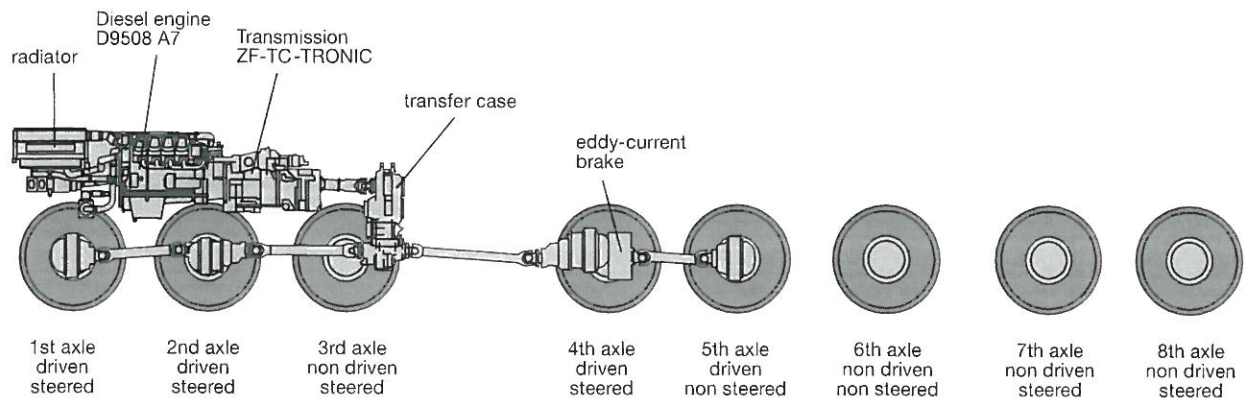
Setting on outriggers - quick, convenient and safe

- Permanent supporting pads
- Supporting rams with 500 mm travel
- Automatic levelling of the crane during the supporting procedure
- 2 x 9° lateral inclination, even with locked suspension
- Inclinometer (electronic display of inclination) with two indicators on the carrier and one display on the LICCON monitor
- Indicators of supporting forces on the carrier and on the LICCON monitor
- Control of sliding outriggers with display of the state of extension on the LICCON monitor (optional)

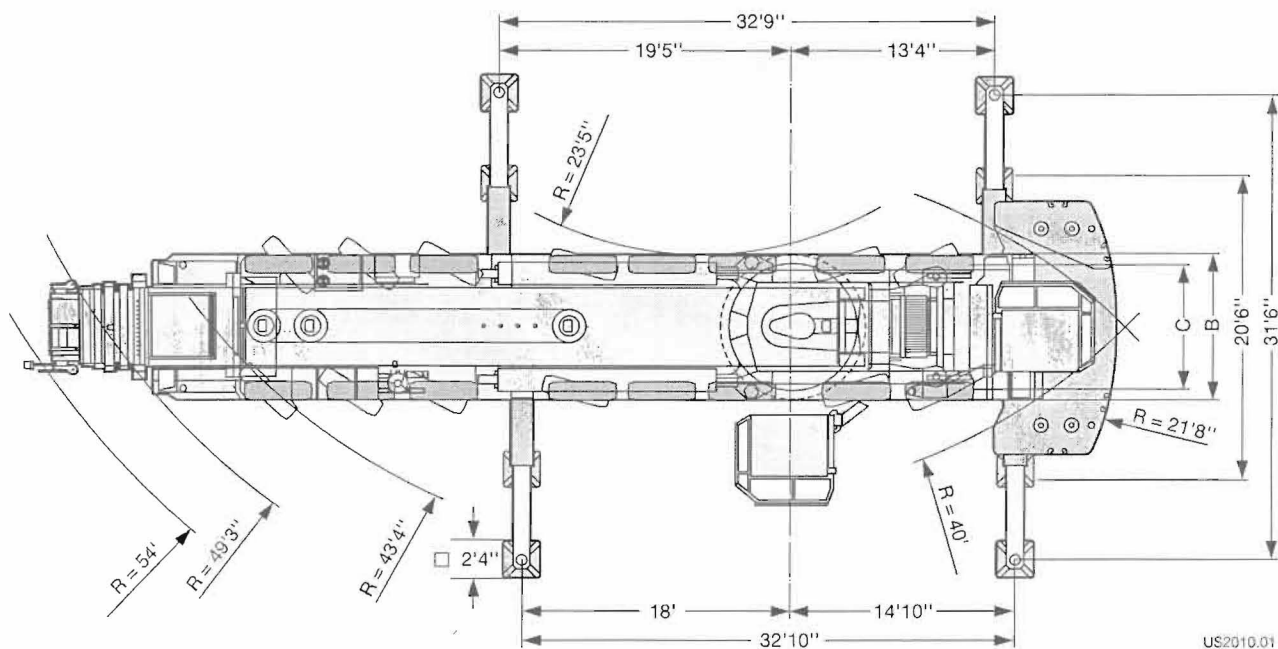
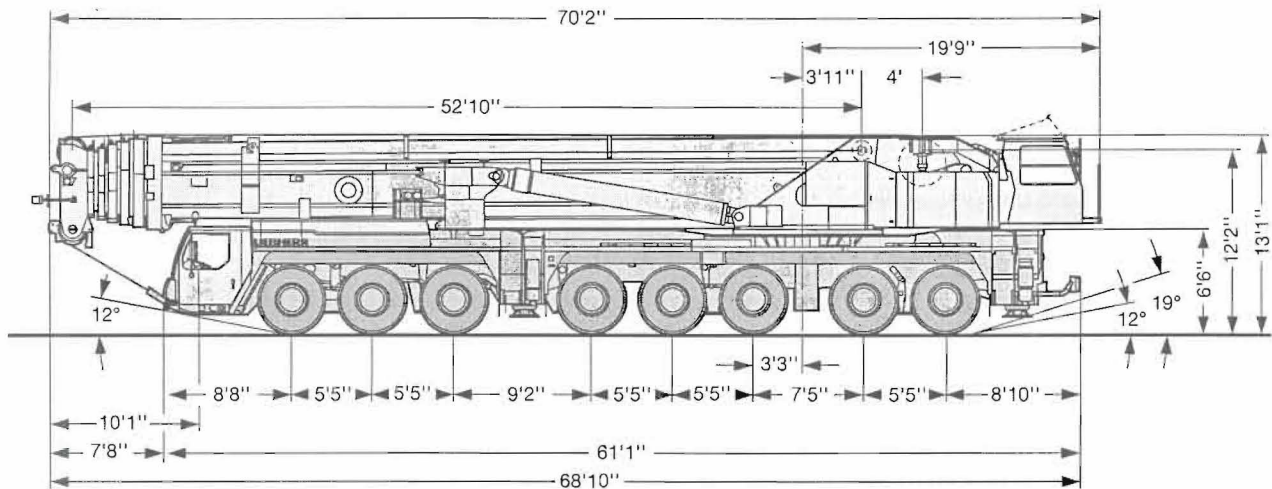


Robust drive concept

- 4 axles permanently driven (1st, 2nd, 4th and 5th axle)
- 6th axle steered; independent steering of axles 7 and 8
- Automated gear system ZF-TC-TRONIC with converter and retarder, 12 forward and 2 reversed speeds, automated control
- Transfer case
- Driving axles with longitudinal differential locks



Dimensions Encombrement



US2010.01

Tyres 14.00 R 25 - Pneumatiques 14.00 R 25



14.00 R 25
16.00 R 25
20.5 R 25

Dimensions · Encombrement

B

9'10"
9'10"
10'7"

C

8'7"
8'4"
8'10"