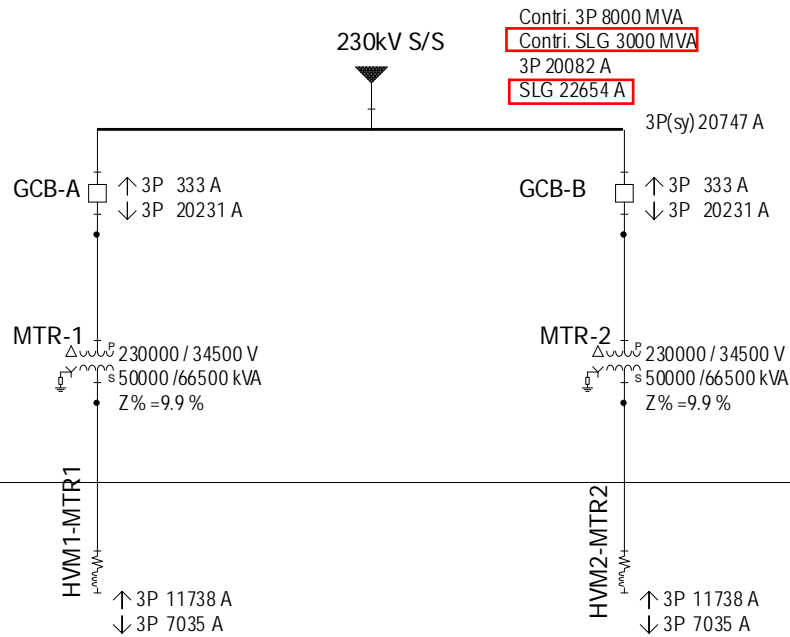


EXTERNAL GRID



Component Editor - Scenario[CASE A]

Component Subviews:

- Utility
- Harmonic Impedance
- Reliability Data
- Optimal Power Flow
- User-Defined Fields
- Datablock

Scenario Manager...

Go To Jump...

U NPC 230kV S/S

Expand Shrink

Name: 230kV S/S ☒ In Service Incomplete

Initial Operating Conditions

Voltage: 1.000 pu Angle: 0.00 Degrees

☒ Enter MVA/kVA/Amps ☐ Enter Per Unit Update...

Utility Contribution

Contribution	X/R:
Three Phase: 8000.0 MVA	10.618
Line to Ground: 3000.0 MVA	10.618

Per Unit Contribution

	R	X
Base/Rated MVA:	100.0	Positive: 0.001172 0.012
Base/Rated Voltage (L-L):	230000	Zero: 0.000781 0.008

Bus Connection

Bus: BUS-1 Connection