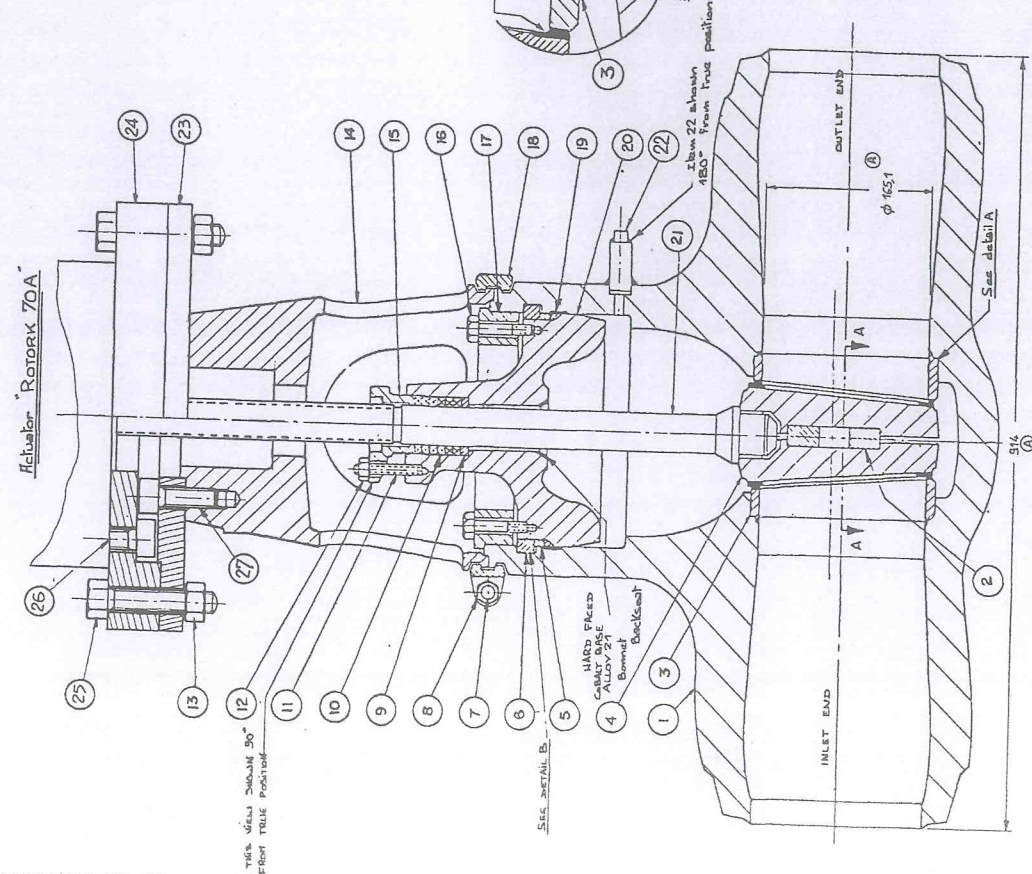
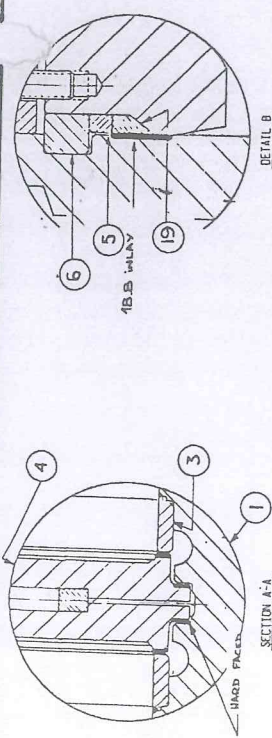
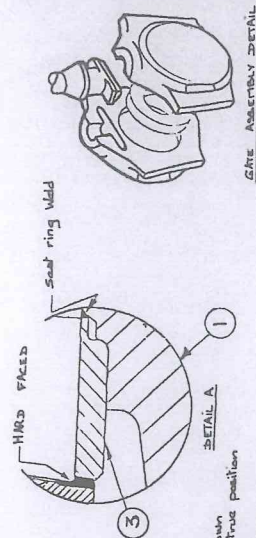
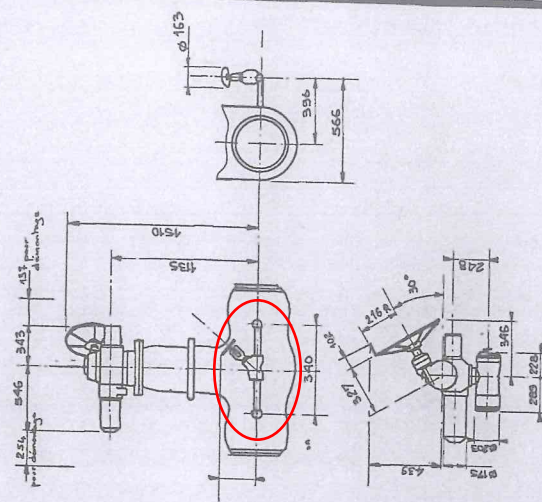


40	47
----	----

No	Name	No Rec'd	Material	specification	Reckall RMC
1	Bolt	1	Alloy Steel	ASTM A27	08300
2	Galle spacer ring	1	Stainless Steel	ASTM A276	08300
3	Socket ring	2	Alloy Steel	ASTM A276	08300
4	Galle	1	Alloy Steel	ASTM A276	08300
5	Spacer ring	1	Alloy Steel	ASTM A276	08300
6	Carpet retainer ring	1	Stainless Steel	ASTM A276	08300
7	Stud	2	Alloy Steel	ASTM A276	08300
8	Hex nut	4	Carbon Steel	ASTM A193	08300
9	Hex nut	4	Carbon Steel	ASTM A193	08300
10	Hex nut	5	Carbon Steel	ASTM A193	08300
11	Stud	5	Carbon Steel	ASTM A193	08300
12	Hex nut	5	Carbon Steel	ASTM A193	08300
13	Hex nut	5	Carbon Steel	ASTM A193	08300
14	Yoke	1	Carbon Steel	ASTM A193	08300
15	Gland	1	Alloy Steel	ASTM A193	08300
16	Hex HD cap screw	12	Alloy Steel	ASTM A193	08300
17	Bonnet retainer ring	1	Carbon Steel	ASTM A193	08300
18	Yoke look ring	1	Carbon Steel	ASTM A193	08300
19	Pressure seal gasket	1	Alloy Steel	ASTM A193	08300
20	Bonnet	1	Alloy Steel	ASTM A193	08300
21	Hex nut	1	Carbon Steel	ASTM A193	08300
22	Hex nut	1	Carbon Steel	ASTM A193	08300
23	Yoke flange	1	Alloy Steel	ASTM A193	08300
24	Adapter flange	1	Alloy Steel	ASTM A193	08300
25	Hex HD cap screw	5	Carbon Steel	ASTM A193	08300
26	Hex socket head screw	5	Carbon Steel	ASTM A193	08300
27	Hex socket head screw	5	Carbon Steel	ASTM A193	08300



PB-302
P.O. NO. 13663 (PG-15-20-81)
Customer Order N° MT/107/80
RVSA Order 169.81-04
PTEN: 1 = RV-215

RV-215

[illegible]