

fig.2

A TYPE					
AC VOLTAGE (V)	208	220	346	380	415
HERTZ (Hz)	60	60	50	50	50
TOTAL AMPS. (A)	6.7	6.4	4.0	3.7	3.4

fig.2

B TYPE					
AC VOLTAGE (V)	208	220	346	380	415
HERTZ (Hz)	60	60	50	50	50
TOTAL AMPS. (A)	7.4	7.0	4.5	4.1	3.7

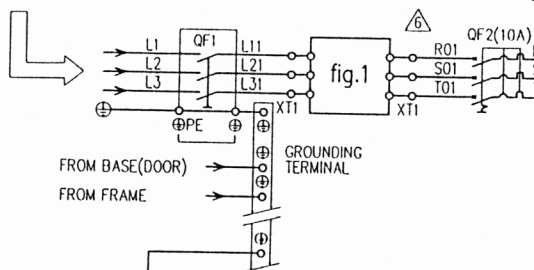
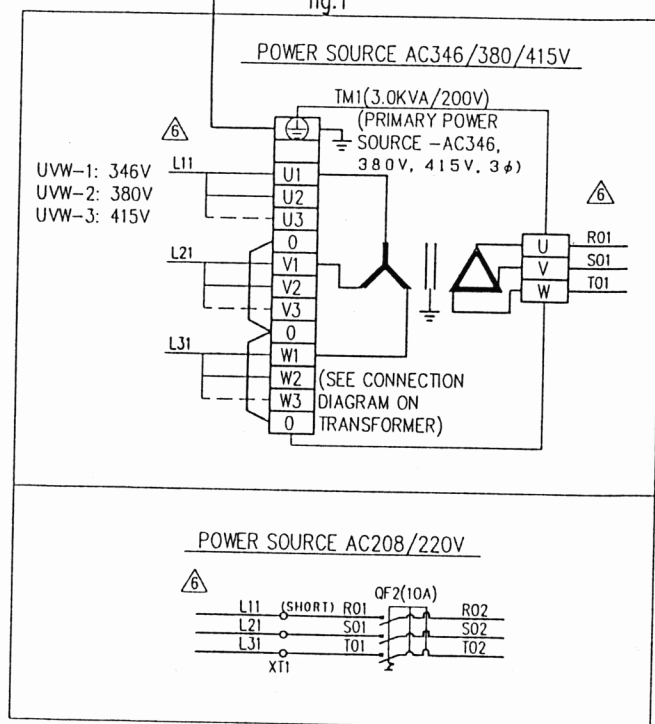


fig.1



INVERTER PARAMETER SETTING LIST U1~5 (E520)

	U1,2	U3	U4	U5
Pr.4	(60)	90.0	(60)	(60)
Pr.5	(30)	50.0	(30)	(30)
Pr.6	(10)	28.0	(10)	(10)
Pr.7	1.5	1.5	1.0	0.2
Pr.8	1.5	1.5	1.0	0.2
Pr.9	*1	1.5	2.55	0.8
Pr.19	200	200	200	200
Pr.20	(60)	120	(60)	90
Pr.38	*2	120	100	90
Pr.42	(6)	(6)	61	(6)
Pr.44	(5)	(5)	0.3	(5)
Pr.45	(9999)	(9999)	1.0	(9999)
Pr.75	1	1	1	1
Pr.79	2	2	2	2
Pr.183	(6)	(6)	3	(6)
Pr.240	0	0	0	0

INSIDE () SETTING BY MITSUBISHI

*1. A TYPE : 0.8A B TYPE : 1.3A

*2. A TYPE : 62Hz B TYPE : 66Hz

