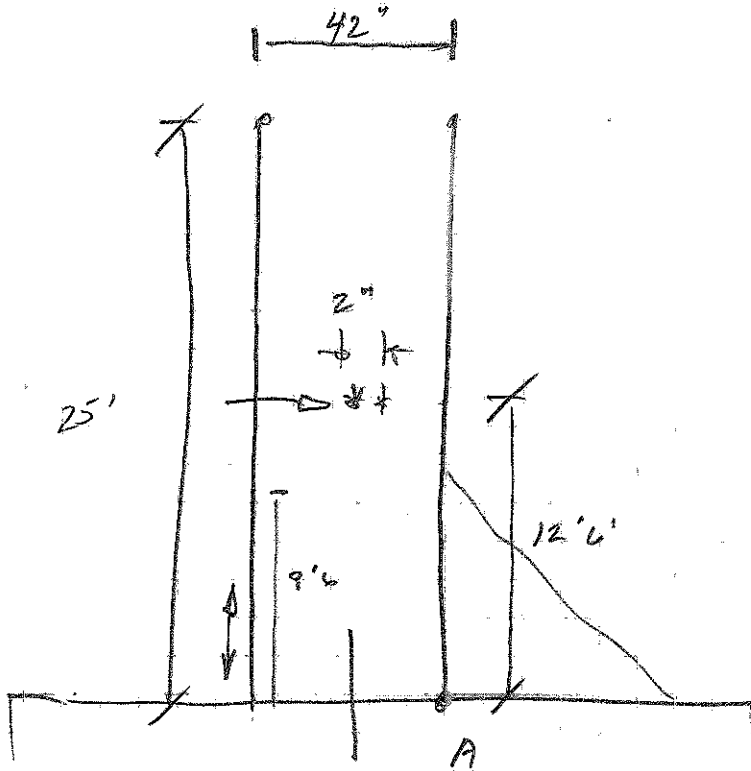


# WATERFRONT MARINE

CONSTRUCTION, INC.

## ENGINEERING BACKUP SHEET

Project \_\_\_\_\_ Date 8/14/14 Sheet \_\_\_\_\_  
 Subject \_\_\_\_\_ Job No. \_\_\_\_\_ Initials \_\_\_\_\_



$$WT = 5536 \text{ lbs}$$

$$20 \times 11$$

$$\#4 @ 3 \frac{1}{4} \text{\" PITCH}$$

$$\sum M_A = 0 \quad +21' (W_{\text{case}}) - 12'6'' (P)$$

$$P = \frac{-21(5536)}{-150} = 7750 \text{ lbs}$$