

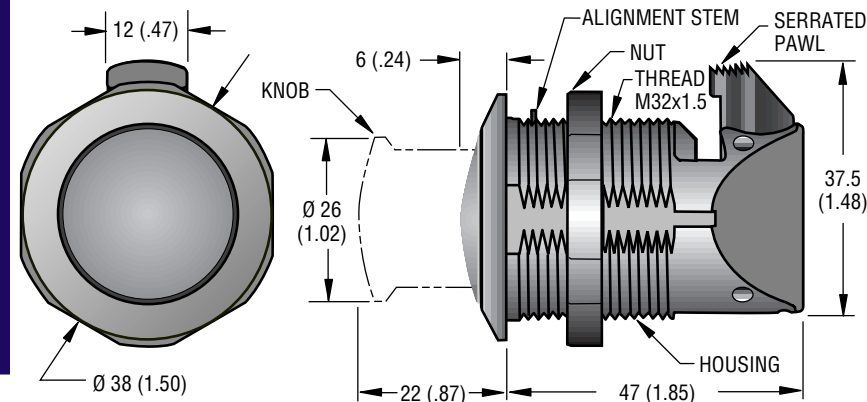
# Southco® Push to Close Latch

## Pop-out Knob Design

- Turn the knob to open, simply push the door to close
- Knob stores flush; pops out at a touch
- Securely latches with knob in or out
- Corrosion and UV-Resistant
- Accommodates misalignment
- Quick, round-hole installation

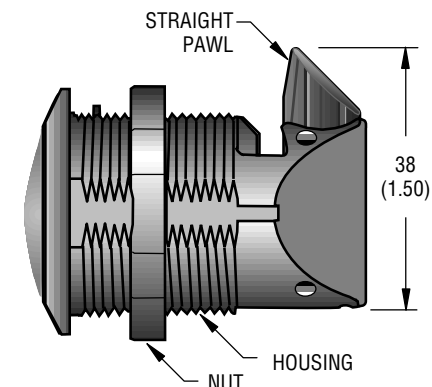
## Self-adjusting Grip

- Accommodates misalignment in 3 planes



FINISH Knob/Housing	PART NUMBERS SELF ADJUSTING GRIP	
	FLUSH-MOUNT ASSEMBLY	SURFACE-MOUNT ASSEMBLY
Chrome/Chrome	M1-2A-12-1 •	M1-2A-11-1 •
Black/Black	M1-2A-12-5 •	M1-2A-11-5 •
Gold/Gold	M1-2A-12-8 •	M1-2A-11-8 •

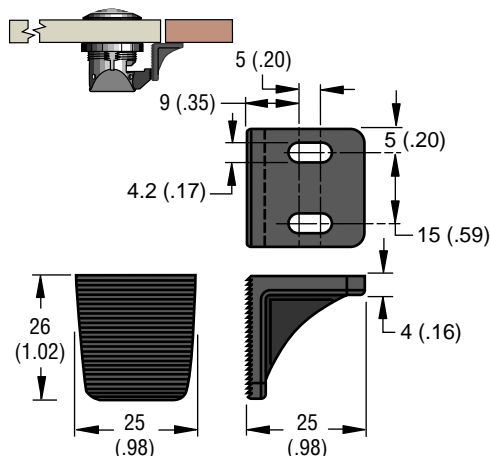
## Fixed Grip



PART NUMBER	
FINISH Knob/Housing	FIXED-GRIP ASSEMBLY
Chrome/Chrome	M1-2A-13-1 •
Black/Black	M1-2A-13-5 •
Gold/Gold	M1-2A-13-8 •

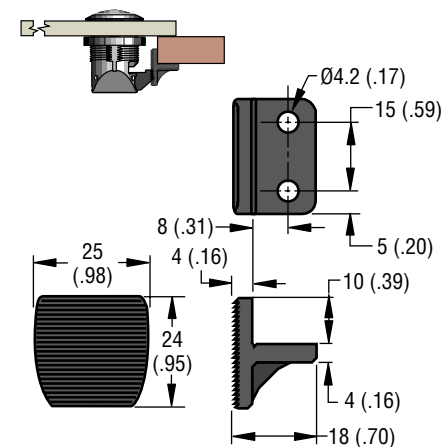
## Flush-mount Keeper

For Flush Door/Frame Configurations



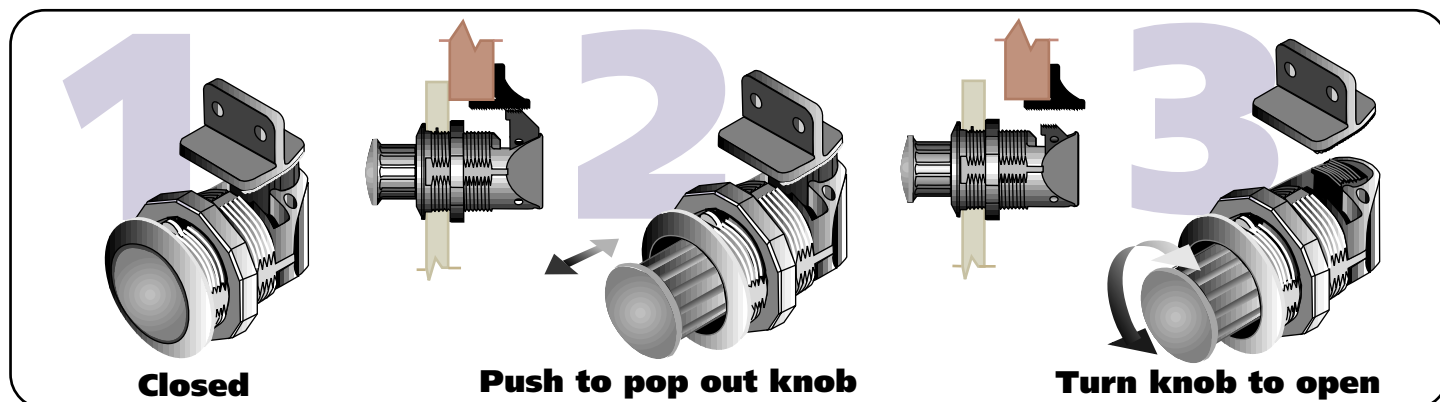
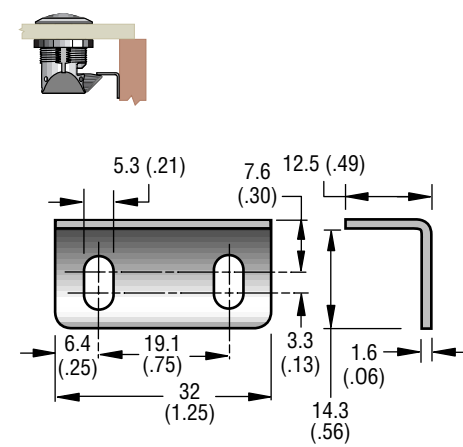
## Surface-mount Keeper

For Overlapping Doors



## Metal Keeper

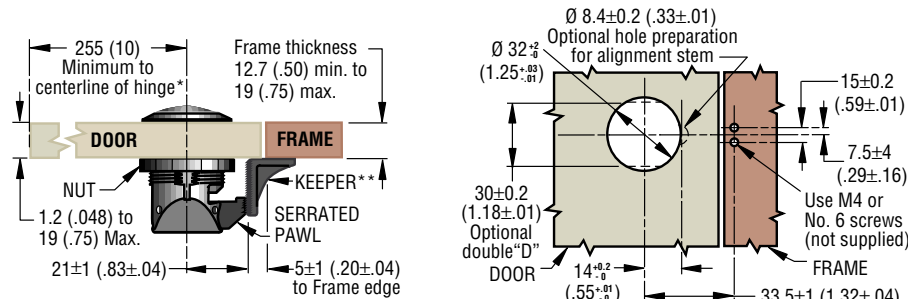
Can be used for Perpendicular Door/Frame Configurations



## Installation Instructions

1. Prepare door and frame as shown. The following optional panel preparations may be used to ensure latch anti-rotation: alignment stem hole for panels thicker than 6.4 (.25) or a double "D" hole.  
Note: alignment stem folds away if round hole preparation is used.
2. Insert latch through hole and tighten nut. Maximum recommended tightening torque is 4.2 N•m, (37 in.-lbs.). Install keeper.

### Self-adjusting Pawl Installation: Flush-mount Door

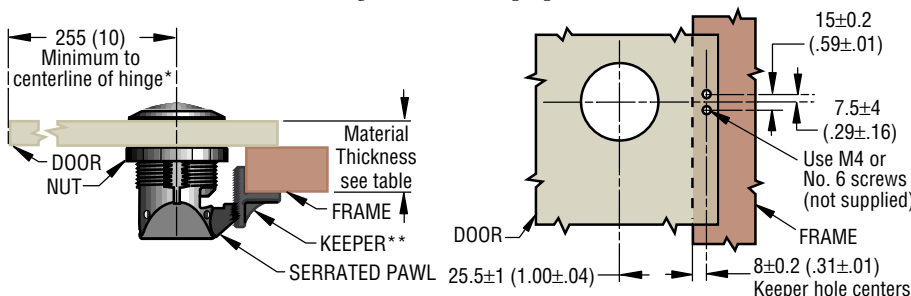


\* Radius for hinged doors. If latch is used on a drawer, there is no clearance minimum.

\*\* Keeper is not intended to be the door stop.

### Self-adjusting Pawl Installation: Surface-mount Door

See Flush-mount installation drawing above for hole preparation detail.



**DOOR TO FRAME Thickness Ratios**

DOOR Thickness	FRAME Thickness	
	Minimum	Maximum
1.2 (.048)	23.8 (.94)	40.3 (1.59)
3.2 (.125)	21.8 (.86)	38.3 (1.51)
6.4 (.25)	18.2 (.72)	35.8 (1.41)
9.5 (.375)	15.5 (.61)	32.5 (1.28)
12.7 (.50)	12.7 (.50)	29.2 (1.15)
15.9 (.625)	10 (.39)	26.1 (1.03)
19 (.75)	10 (.39)	23 (.90)

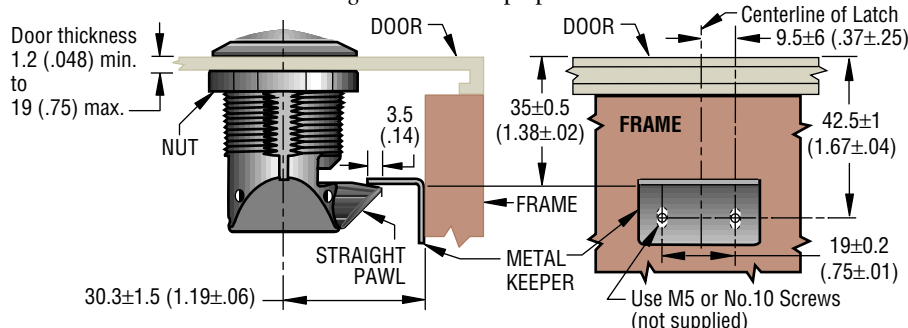
\*Radius for hinged doors. If latch is used on a drawer, there is no clearance minimum.

\*\*Keeper aligns against Frame for ease of installation.

NOTE: A gasket, bumper, or equivalent will eliminate a gap that could exist between the door and frame and eliminate possible rattle.

### Fixed-grip Installation

See Flush-mount installation drawing above for hole preparation detail.



If necessary, adjust keeper to eliminate any gap between Door and Frame.



### Material and Finish

BLACK HOUSING and KNOB: PC/ABS.  
CHROME HOUSING: PC/ABS, chrome plated.  
CHROME KNOB: ABS, chrome plated.  
GOLD HOUSING: PC/ABS, chrome plating plus gold-colored PVD.  
GOLD KNOB: ABS, chrome plating plus gold-colored PVD.  
INTERNAL CYLINDER: Acetal, black  
PLASTIC KEEPERS, NUT, PAWL: Glass filled nylon, black.  
METAL KEEPER: 304 Stainless steel, passivated.  
INTERNAL SPRINGS (2): 304 Stainless steel, passivated.

### Product Strength Guidelines

(To assist in your product selection; samples are available for your evaluation.)

**At room temperature**

#### Average Ultimate Load:

Self adjusting grip: 460 N (100 lbs.)

Fixed Grip: 780 N (175 lbs.)

#### Maximum Recommended Working Load:

Self adjusting grip: 220 N (50 lbs.)

Fixed Grip: 310 N (70 lbs.)

#### Salt Spray exposure per ASTM B117:

Greater than 500 hrs.

#### Ultra-violet exposure per ASTM G53:

Greater than 500 hrs.

#### Product Operating Temperature Range:

-30° C (-20° F) to 60° C (140° F)

#### Flammability Rating: UL94-HB

millimeter (inch)  
millimeter  
(inch)

Dimensions without tolerances are for reference only.