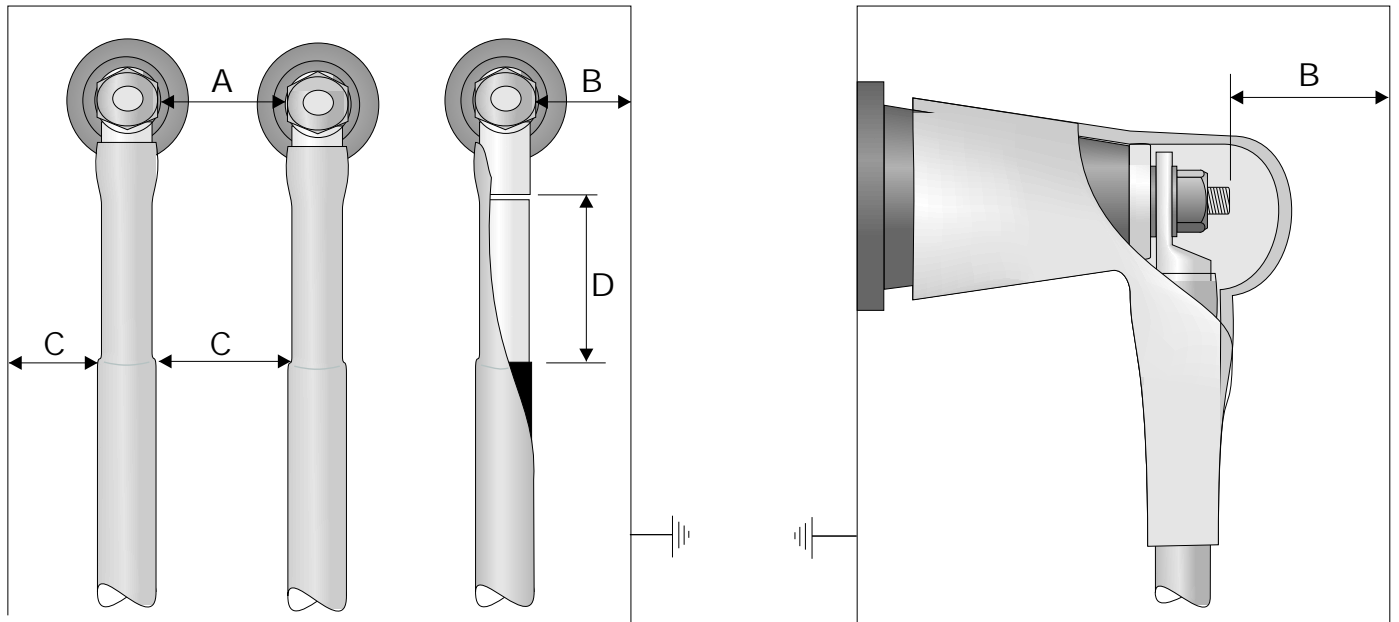




Shrink Polymer Systems

Cable Installation Materials – 24 volts to 36 kV

Minimum clearances required for indoor termination kits.



Check the cable box for minimum clearances and refer to table 1 below.

If actual dimension 'A' and 'B' is less than the value given, a bushing boot must be fitted.

Table 1 Minimum air clearances for terminations in cable boxes in accordance with BS 164 Class A.

Maximum system voltage, phase to phase (kV)	7.2	12	24	36
Minimum air clearance between live metal 'A' (mm)	90	127	242	356
Minimum air clearance between live metal and earth 'B' (mm)	65	75	140	222

Table 2 Minimum air clearances for terminations in cable boxes in accordance with BS 164 Class A. with bushing boots fitted

Maximum system voltage, phase to phase (kV)	7.2	12	24	36
Minimum air clearance between live metal 'A' (mm)	45	75	100	125
Minimum air clearance between live metal and earth 'B' (mm)	32	60	75	100

Table 3 Minimum clearance between cores and between cores and earth

Maximum system voltage, phase to phase (kV)	7.2	12	24	36
Minimum clearance 'C' (mm) measured from top of Stress Tubes	15	20	40	50

Table 4 Minimum clearance between top of the Stress Control tubing and base of the cable lug.

Maximum system voltage, phase to phase (kV)	7.2	12	24	36
Minimum clearance 'D' (mm)	30	50	95	250

Table 5 Impulse voltage withstand for indoor terminations, installed with bushing boots, on bushings in accordance with BS2562.

Maximum system voltage, phase to phase (kV)	7.2	12	24	36
Impulse withstand voltage (kV)	75	95	125	170