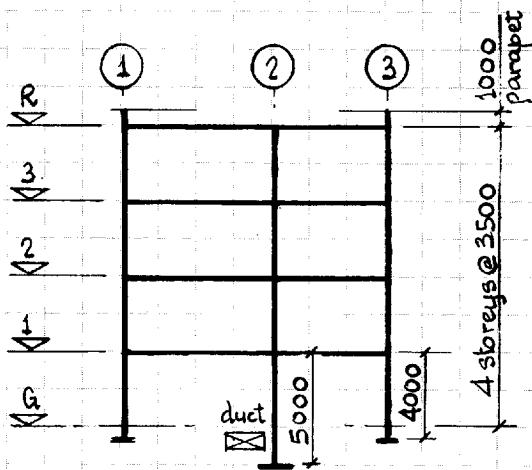
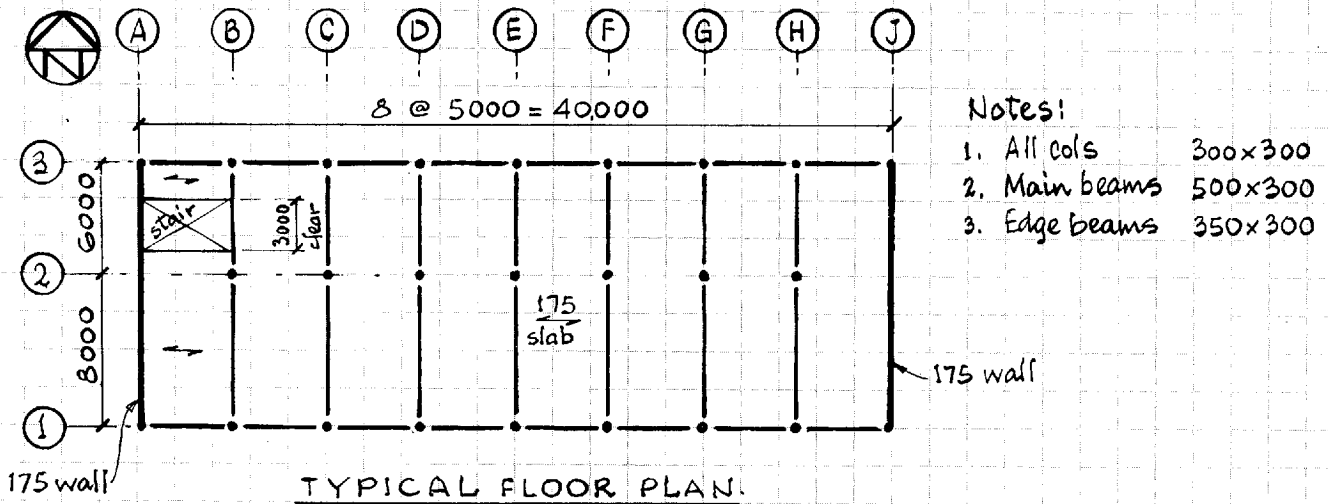
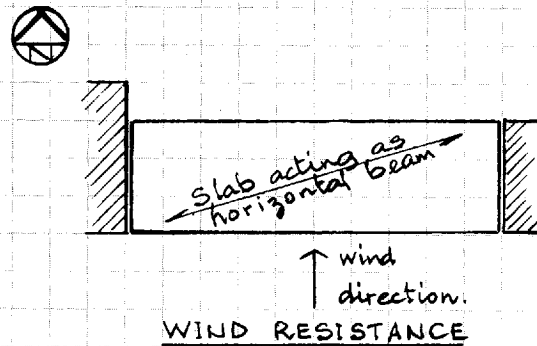


Structural summary sheet



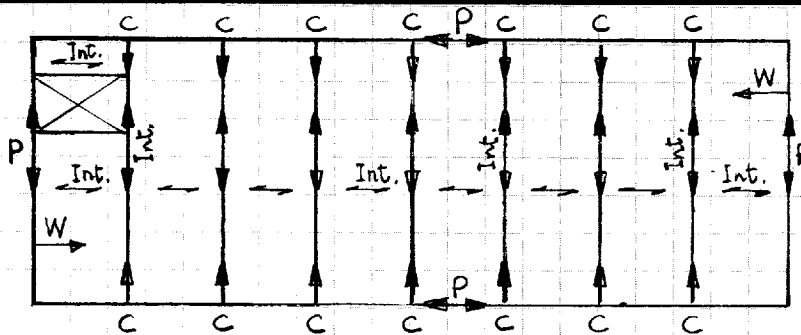
TYPICAL CROSS-SECTION.

Note: Internal col. ftgs. $2750 \times 2750 \times 600$



Notes:

1. $N \rightarrow S$ wind force resisted by end shear walls.
2. Lateral bracing in $E \rightarrow W$ direction provided by staircase, and infill masonry panels, on grid 1/H-J, and grid 3/H-J.



Key:

P - Peripheral tie

Int. - Internal tie

C - Column (external) tie.

W - Wall " "

3.12.3

TIE PROVISION - horizontal ties

3.12.3-4.2

$$F_t = (20 + 4n_o) = 20 + 16 = 36 < 60 \text{ kN.}$$