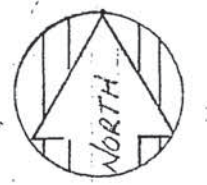


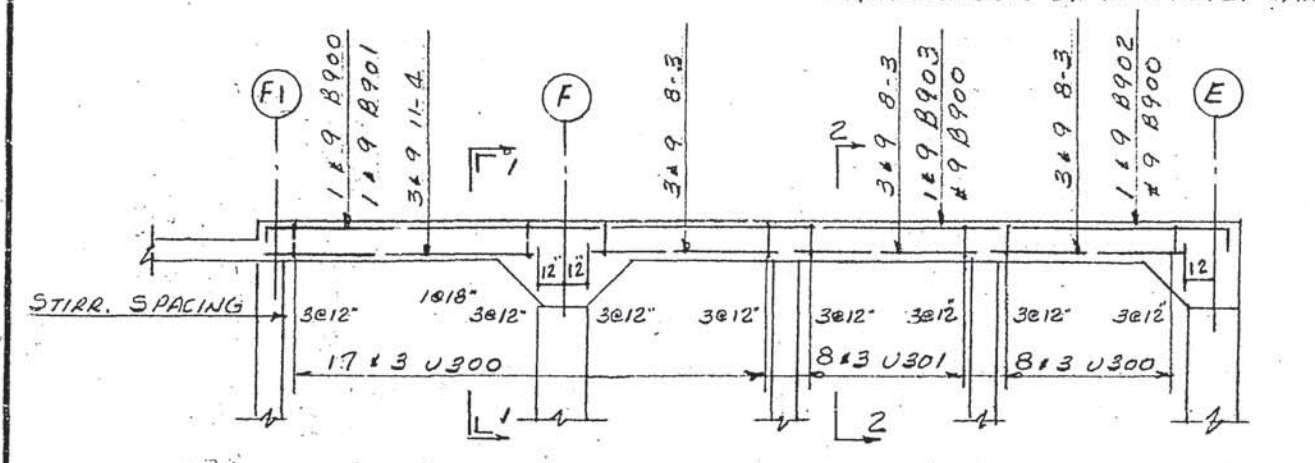
# FIRST FLOOR FRAMING PLAN

NOTE: PLACE 24"x40" DIA. AT ALL COR. AT ALL OPNGS 6-8 Pcs. TOTAL NO. SUPPLD.

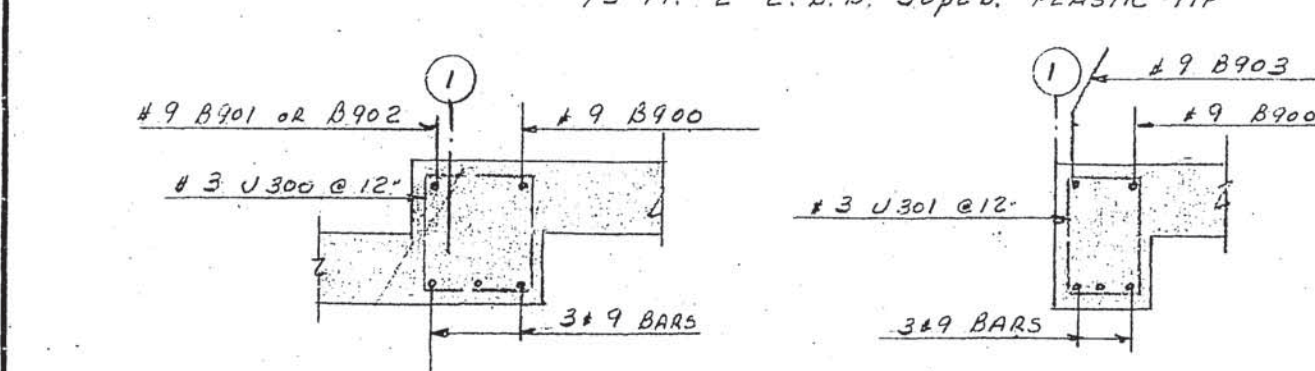


PLACE EAST WEST BOT. STEEL FIRST IN THIS AREA REMAINDER OF BOT. STL. SAME AS BELOW

INDICATES TOTAL NO. OF BARS IN EA. BAND

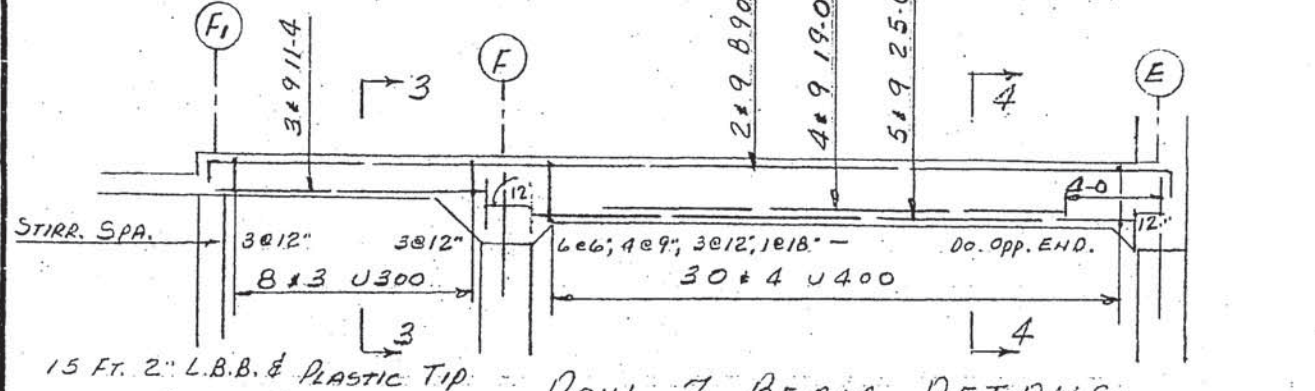


ROW 1 BEAM DETAILS

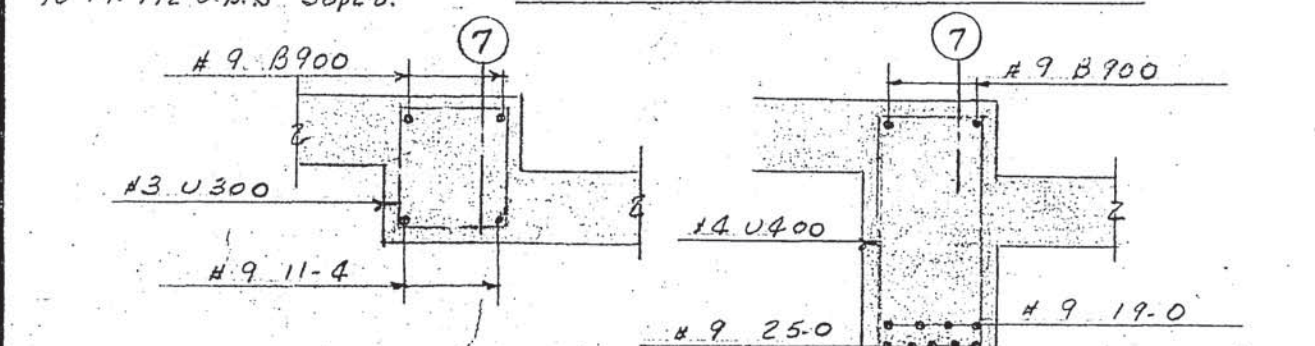


SECTION 1-1

SECTION 2-2



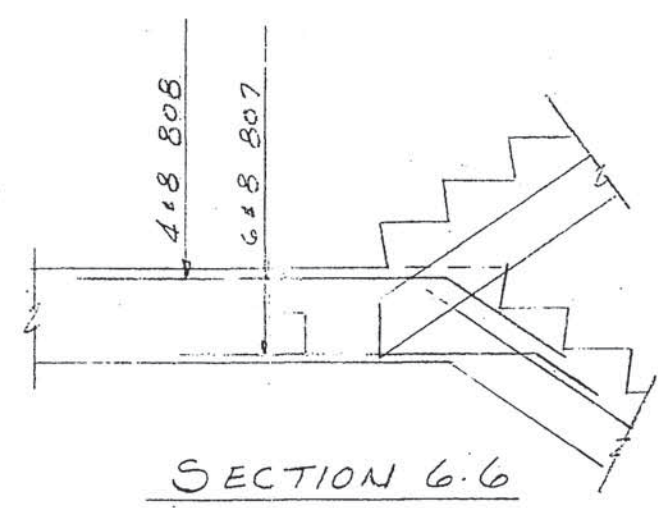
ROW 7 BEAM DETAILS



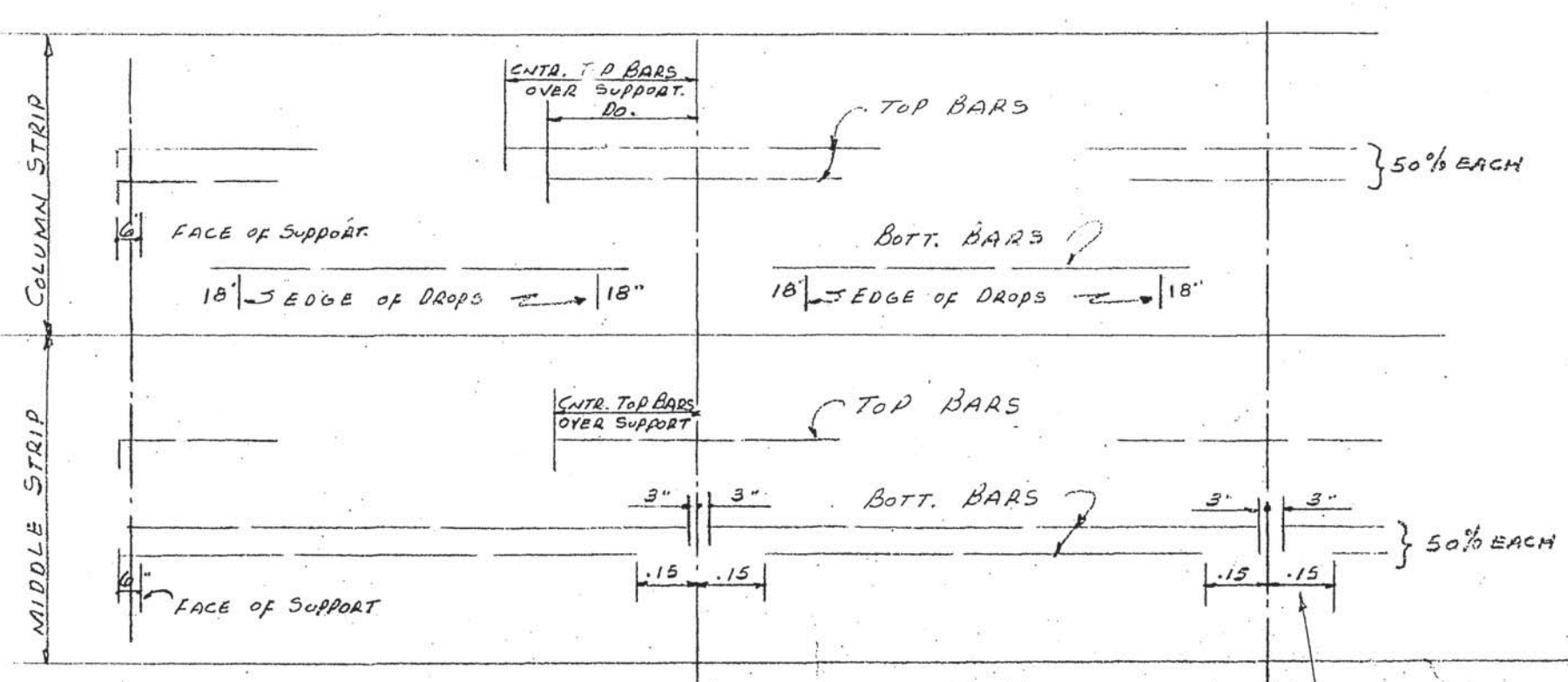
SECTION 3-3

SECTION 4-4

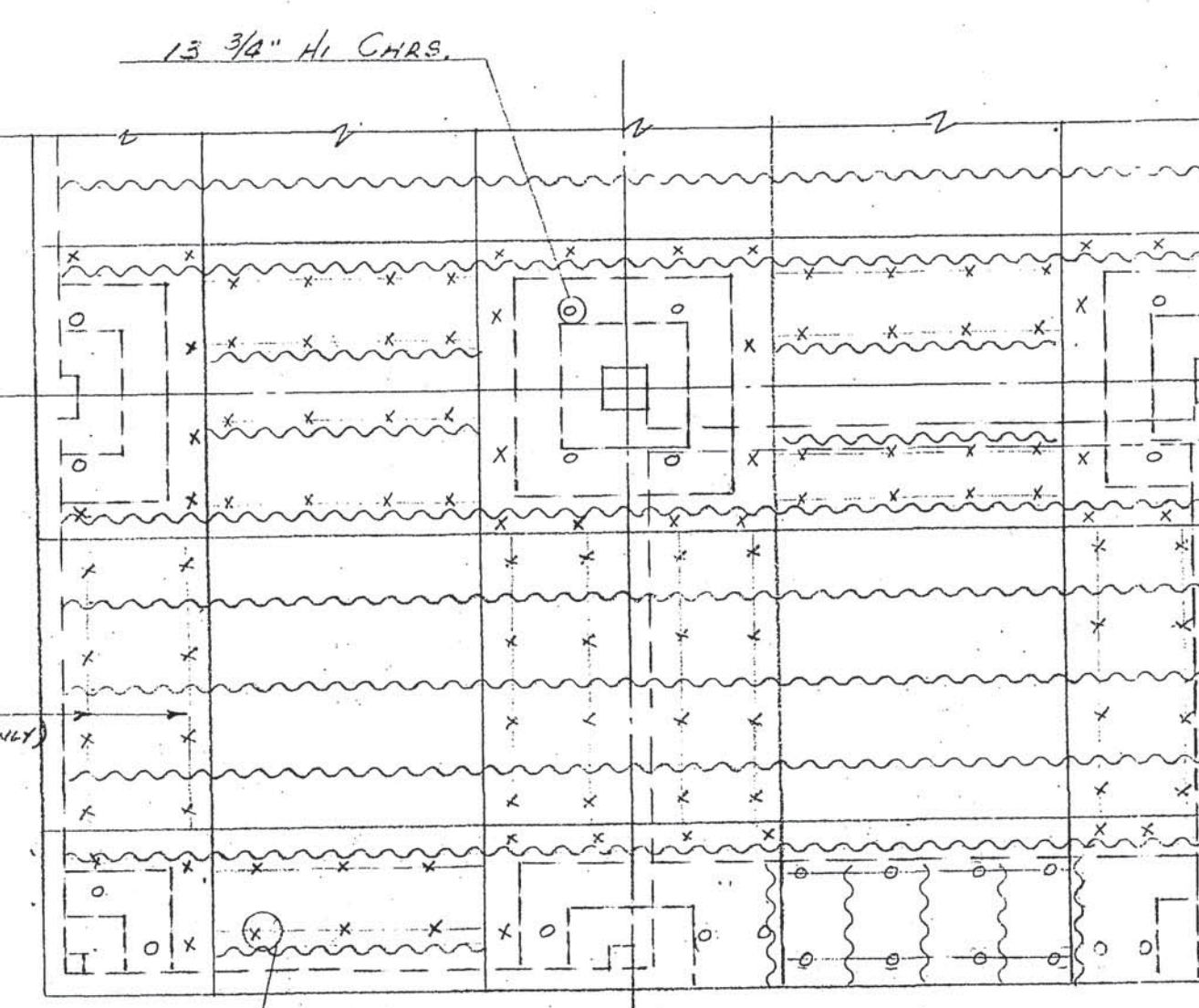
REIN. PLACEMENT SCHEDULE  
 1) PLACE NORTH-SOUTH BOTTOM STEEL  
 2) PLACE EAST-WEST BOTTOM STEEL  
 3) PLACE NORTH-SOUTH TOP STEEL  
 4) PLACE EAST-WEST TOP STEEL  
 SEE DRWG. NO. 9 FOR SLAB SCHEDULE FOR BENT BAR DETAILS SEE DRWG. NO. 9



SECTION 6-6



SLAB REIN. PLACEMENT DIAGRAM



ACCESSORY LAYOUT

SPAN	DIA.
27.0	4'-4"
27.0	4'-0"
26.0	3'-10"
18.0	2'-8"
15.0	2'-8"
14.0	2'-8"
11'-1/2"	1'-9"

4650 FT. 3/4" SLAB BOLST. SUPPLD. REIN. 172 Pcs. 13 3/4" HI. CHRS. SUPPLD. WITH 1250 Pcs. 6 3/4" HI. CHRS. SUPPLD.

Dimensions sho materials and

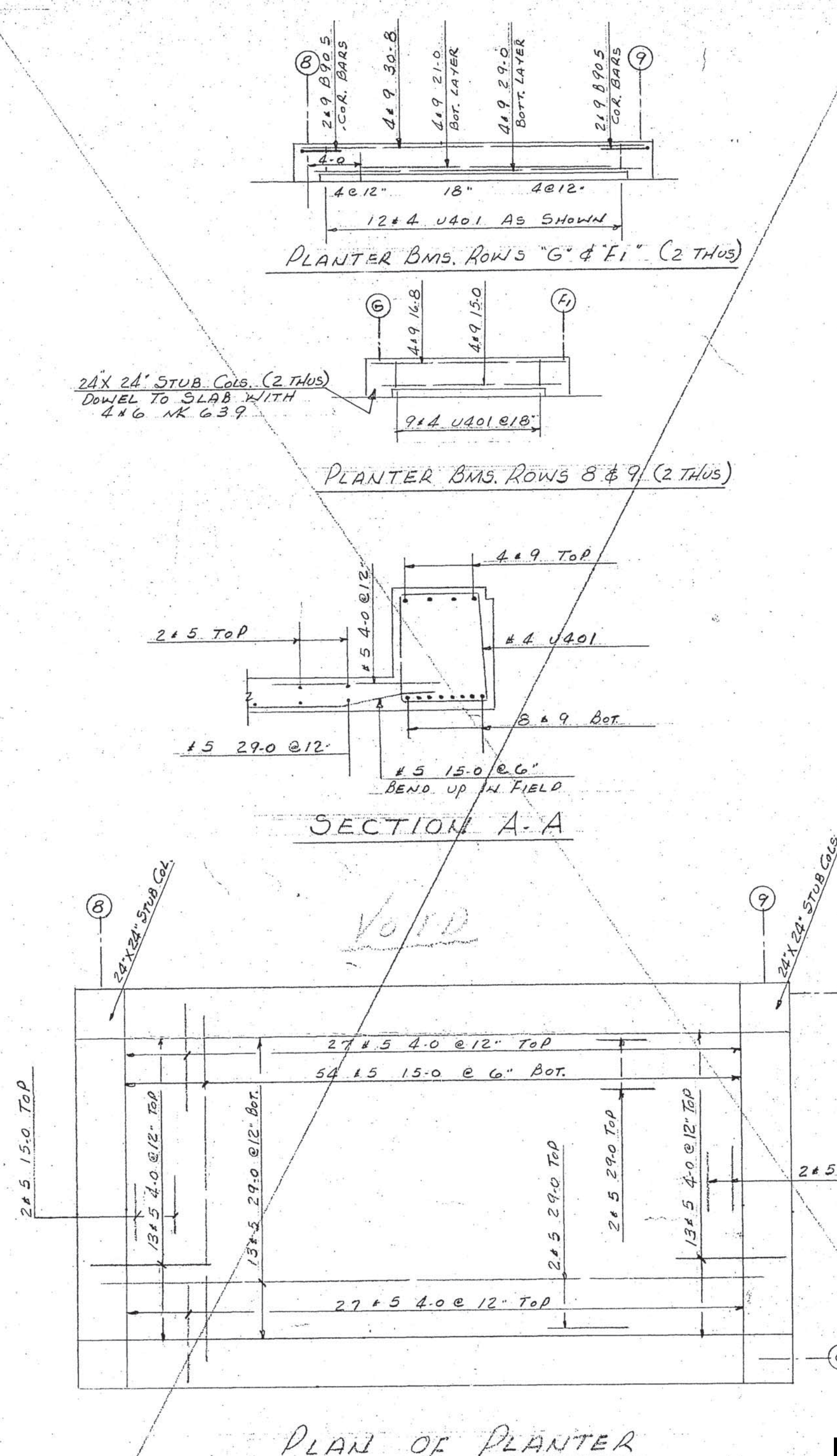


# FIRST FLOOR SLAB SCHEDULE

MARK	NO.	REINFORCING
CB1	1	9 16 20-0
CB2	2	18 20-0
CB3	5	18 20-0
CB4	2	21 20-0
CB5	1	8 20-0
CB6	1	9 20-0
CB7	2	6 11-4
CB8	2	6 8-8
CB9	5	11 8-8
CB10	5	11 11-4
CB11	1	5 11-4
CB12	1	5 8-8
CB13	2	15 17-8
CB14	2	11 11-4
CB15	1	8 33-5
CB16	1	3 33-5
CB17	1	5 19-2
CB18	1	5 5-11
CB19	1	6 20-0
CB20	3	18 20-0
CB21	2	26 20-0
CB22	2	9 20-0
CB23	2	11 16 11-0
MB1	6	8 16 27-3 7 16 23-6
MB2	1	8 23-3 7 19-3
MA3	1	3 27-3 2 23-6
MA4	1	9 27-3 9 23-6
MA5	1	4 27-3 3 23-6
MA6	1	6 26-6 5 19-0
MA7	6	6 14-7 5 12-8
MA8	1	2 14-7 2 12-8
MA9	1	7 14-7 6 12-8
MA10	1	3 14-7 5 12-8
MA11	1	8 36-8 7 32-11
MA12	2	8 26-3 7 22-8
MA13	2	3 11-11 3 10-5
MA14	1	4 9-9 3 8-2
MA15	4	6 11-11 5 10-5
MA16	1	5 38-8
MA17	1	9 21-0 9 18-1
MA18	1	4 20-11 3 18-1
MA19	2	8 26-3 7 22-6
MA20	1	7 17-3 6 14-11
MA21	1	3 17-3 2 14-11
MA22	1	2 27-3
MA23	1	3 27-3
MA24	1	5 13-8
MA25	1	5 11-6
MA26	1	10 6-3
MA27	1	11 16 8-8 11 16 9-8
CB24	1	9 16 19-0
CB25	2	18 19-0
CB26	1	24 19-0
CB27	1	8 26-0
CB28	8	15 20-0
CB29	2	8 20-0
CB30	3	8 20-0
CB31	2	8 16 29-4
CB32	1	2X8 16 11-3
CB33	2	2X15 11-3
CB34	2	11 16 20-0
CB35	2	21 20-0
CB36	2	6 11-0
CB37	1	11 11-0
CB38	2	11 16 38-5
CB39	2	21 38-5

MARK	NO.	REINFORCING
MB27	2	8 16 26-3 7 16 22-8
MB28	2	2 26-3 1 22-8
MB29	1	9 21-8
MB30	1	4 26-8
MB31	7	8 26-6 7 16 19-0
MB32	5	3 26-6 3 19-0
MB33	5	3 26-6 2 19-0
MB34	1	4 8-6 4 4-9
MB35	1	1 12-8 1 9-0
MB36	1	3 16-2 2 26-6
MB37	1	4 10-0 4 6-3
MB38	1	1 16 10-0 1 16 6-3
MB39	1	2X8 16 14-6 2X7 16 10-9
MB40	1	2X3 14-6 2X3 10-9
MB41	1	2X3 14-6 2X2 10-9
MB42	1	8 16 32-7 7 16 28-10
MB43	1	2 16 26-0 2 22-9
MB44	1	6 23-7 5 19-10
MB45	1	3 17-6 5 12-8
MB46	1	3 18-3 2 15-7
MB47	1	4 18-3 4 15-7
MB48	1	3 18-3 2 15-7
MB49	2	8 41-8 7 37-7
MB50	1	5 41-8 5 37-7
MB51	1	3 16 41-8 2 16 37-7
TA1	1	4 16 600 4 16 601
TA2	1	9 600 8 9 601
TA3	2	11 600 10 601
TA4	1	6 17-10 6 13-6
TA5	1	6 17-10 5 13-6
TA6	2	6 602 5 603
TA7	5	11 602 10 603
TA8	1	5 17-10 5 13-6
TA9	2	12 17-10 12 13-6
TA10	1	6 17-10 5 13-6
TA11	1	3 604 4 605
TA12	1	6 606 5 607
TA13	1	7 609
TA14	2	8 607
TA15	3	11 606 10 607
TA16	2	8 606 7 607
TA17	1	4 606 4 607
TA18	1	5 17-10 5 13-6
TA19	2	8 13-10 7 10-6
TA20	1	6 611 5 612
TA21	1	2 611 1 612
TA22	1	5 600 4 601
TA23	3	9 600 9 601
TA24	2	13 600 12 601
TA25	1	3 600 2 601
TA26	1	4 614
TA27	1	5 600 4 601
TA28	1	8 615 7 616
TA29	1	8 617 7 618
TA30	2	11 13-10 10 10-6
TA31	1	5 16 10-0 5 16 7-6
TA29	1	15 16 601
TA30	6	18 601
TA31	1	7 601
TA31X	1	25 601
TA32	1	9 601
TA33	2	15 13-6
TA34	6	15 603
TA35	1	5 13-6
TA36	1	18 13-6
TA37	1	7 13-6
TA38	3	15 607
TA39	1	2 607
TA40	1	10 608
TA41	1	3 607
TA42	1	13 619
TA43	1	5 620
TA44	1	18 10-6

MARK	NO.	REINFORCING
TA45	1	7 16 10-6
TA46	1	10 616 3 618
TA47	1	5 618
TA48	1	18 10-6
TA49	1	7 10-6
TA52	4	18 601
TA53	1	2 601
TA54	1	3 601
TA55	1	4 623 4 624 4 625
TA56	1	18 16 612
TB1	1	4 16 621 4 16 622
TB2	3	8 622 7 621
TB3	1	12 621 12 622
TB4	1	6 17-10 6 13-6
TB5	1	12 17-10 12 13-6
TB6	2	12 622 12 621
TB7	1	12 600 12 601
TB8	1	6 600 6 601
TB9	8	6 17-10 5 13-6
TB10	7	11 17-10 10 13-6
TB11	2	7 17-10 6 13-6
TB12	2	8 635 7 636
TB13	2	12 626 12 627
TB14	1	6 17-10 6 13-6
TB15	1	11 600 10 601
TB16	1	6 600 5 601
TB17	1	11 615 10 616
TB18	1	6 615 5 616
TB19	2	6 19-2 6 14-6
TB20	2	12 19-2 12 14-6
TB21	2	6 628 6 629
TB22	2	12 16 628 12 16 629
TB23	3	15 16 621
TB24	1	4 621
TB25	10	15 13-6
TB26	1	8 13-6
TB27	1	7 621
TB28	2	4 621
TB29	1	8 630
TB30	1	4 621
TB31	1	7 601
TB32	1	15 601
TB33	5	6 13-6
TB34	3	5 13-6
TB35	1	8 631
TB36	1	7 13-6
TB37	1	8 632
TB38	1	7 633
TB39	1	15 627
TB40	1	8 13-6
TB41	1	7 601
TB42	2	7 601
TB43	1	11 634
TB44	1	7 616
TB45	1	15 616
TB46	1	15 14-6
TB47	1	10 14-6
TB48	1	5 14-6
TB49	2	15 629
TB50	1	10 629
TB51	1	5 629
TB52	2	5 16 636



## 1ST FLOOR BENT BAR DETAILS

SIZE	LENGTH	MARK	TYPE	A	B	C	D	E	F	G	H	K
19	42	4	B900	17	1-2	60-0	1-2					
"	24	5	B901	17	1-2	22-0	1-2					
"	12	10	B902	17	1-2	18-8	1-2					
"	11	5	B903	17	1-2	8-11	1-2					
"	14	5	B904	17	1-6	11-8	1-6					
18	5	0	B00	3	3-0	2-0					1-1	1-8
"	7	0	B01	3	6-0	1-0					7"	10"
"	6	0	B07	3	5-0	1-0					7"	10"
"	7	0	B08	3	5-0	2-0					11"	1-8
15	2	0	B00	17	2-4	1-8						
14	8	1	U400	T2	4"	1-1/2	2-7	1-1/2	2-7			
"	"	"	"	"	"	"	"	"	"			
13	5	4	U300	T2	3	1-1/2	1-3/2	1-1/2	1-3/2			
"	4	7	U301	T2	3	2	1-3/2	2	1-3/2			
"	5	6	U302	T2	3	2	1-2	2	1-2			
"	4	2	U303	T2	3	2	1-1	2	1-1			
16	9	11	600	17		9-5						
"	7	9	601			7-3						
24	7	602				24-1						
22	5	603				21-11						
18	11	604				18-5						
16	9	605				16-3						
22	5	606				1-0	21-5					
20	3	607				1-0	19-3					
20	9	608				1-0	19-3	6"				
17	0	609				6"	16-6					
22	4	610				1-0	20-10	6"				
19	3	611				6"	18-9					
17	1	612				16-7						
20	7	613				19-7	6"					
9	2	614				8-2	6"					
7	4	615				6-10						
3	10	616				5-4						
8	4	617				7-10						
6	10	618				6-4						
17	11	619	H1	6"	12-9	4-1/2				6"	2 1/2	3 1/2
43	0	620	17		6"	42-6						
7	6	621				7-0						
9	9	622				9-3						
14	8	623				13-8	6"					
12	6	624				11-6	6"					
8	10	625				21-0	6"					
15	3	626				18-9						
13	1	627				12-7						
23	0	628				22-6						
20	8	629				20-2						
2	6	630				2-0						
16	0	631				15-6						
17	1	632				16-1	6"					
15	5	633				14-5	6"					
4	10	634	17		6"	4-4						
17	11	635	3		8-10 1/2	4 1/2	8-8			2 1/2	3 1/2	
13	7	636	3		6-8 1/2	4 1/2	6-6			2 1/2	3 1/2	
22	6	637	H1	6"	15-9	5 1/2	2-3 1/2			2 1/2	3 1/2	
16	14	10	638	H1	6"	12-9	4 1/2	6-2 1/2		2 1/2	3 1/2	

