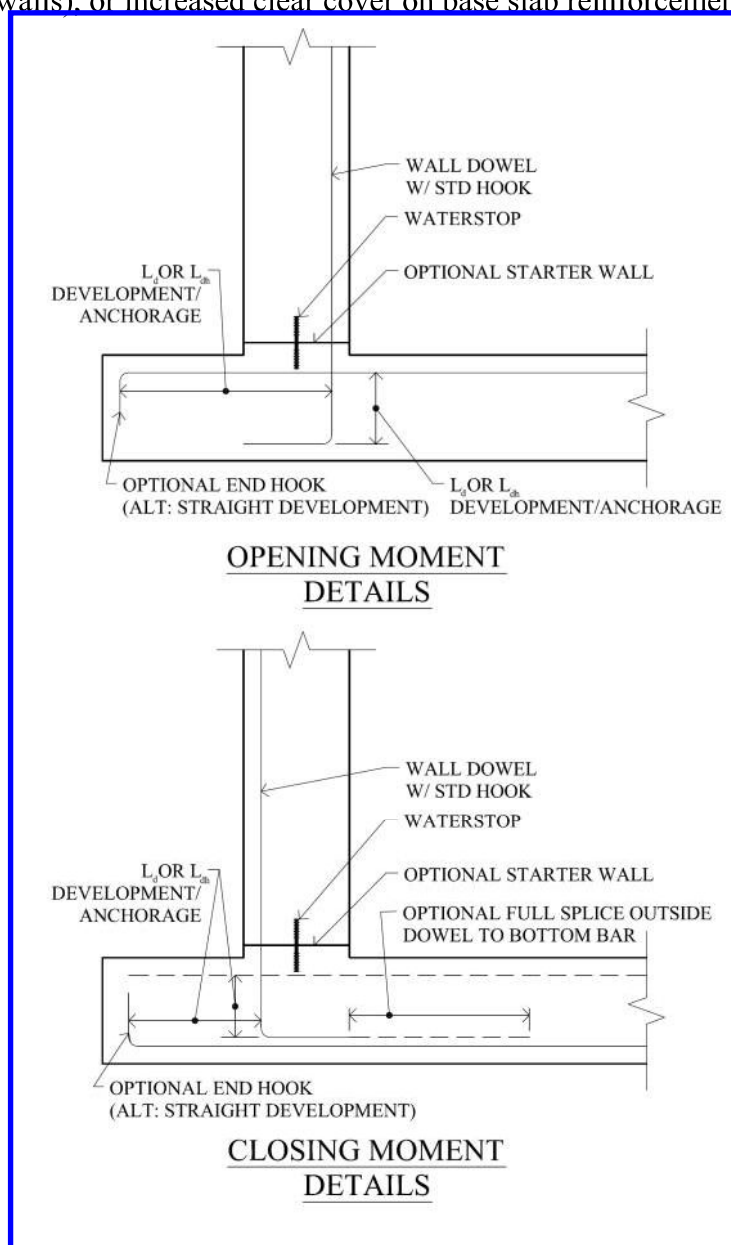


development starts. Development typical begins at the cracked section or the joint face. In Figure 9, it is assumed that the development for the reinforcement begins where the orthogonal reinforcement will first intersect the crack. The cracked section is assumed to be 45 degrees across the joint. The base slab thickness needs to be at least thick enough to develop the wall reinforcement and the toe shall be long enough to develop the base slab reinforcement.

The use of starter wall in figure 9 is to serve as a means to avoid conflict between the base slab reinforcement and the waterstop. Typical the starter wall height is between 1.5-3.0 inches, waterstop height is 4-9 inches and clear cover 2-3 inch. In lieu of a starter wall there are several other options, e.g., shear key, mounded base (used for thicker walls), or increased clear cover on base slab reinforcement.



**Figure 9. Typical Reinforcement Details**