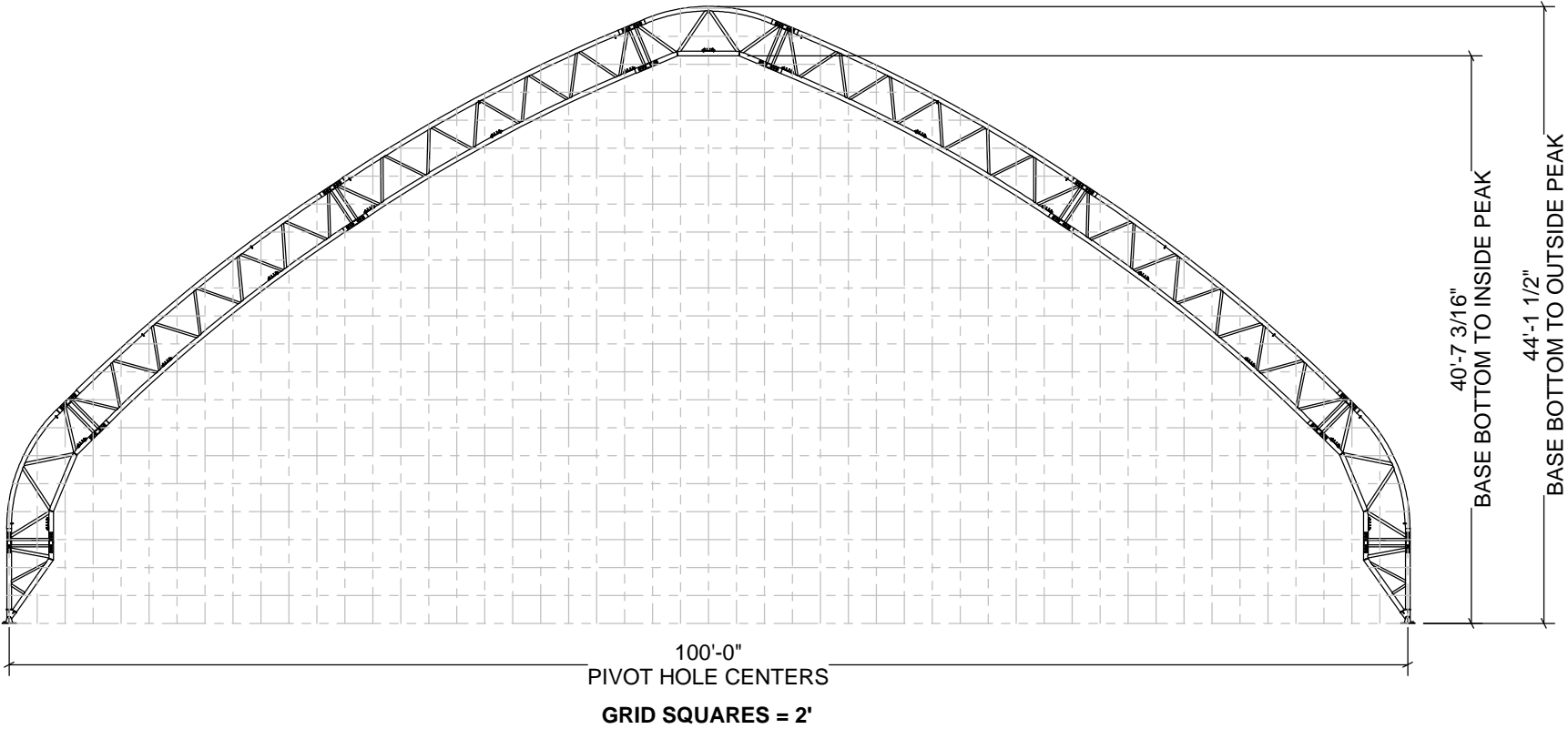


ADDITIONAL INFORMATION

THESE PRINTS IDENTIFY AND SHOW THE MAIN COMPONENTS AND CONNECTIONS FOR THIS BUILDING. LENGTH, WIDTH, AND OTHER IMPORTANT DIMENSIONS ARE ALSO PRESENT.

TO BEST UNDERSTAND HOW TO CONSTRUCT THIS BUILDING, THE INFORMATION CONTAINED WITHIN THESE SHEETS SHALL BE USED WITH THE INSTRUCTION MANUAL SHIPPED WITH THE BUILDING.

THE INSTRUCTIONS INCLUDE DETAILS NEEDED DURING CONSTRUCTION.



NOTE: FOUNDATION AND ANCHOR DESIGN IS NOT BY CLEARSPAN. THE FOUNDATION AND ANCHOR DESIGN IS BY OTHERS. THE FOUNDATION AND ANCHORS ARE CRITICAL ELEMENTS FOR THE BUILDING TO FUNCTION AS DESIGNED. THE OWNER IS RESPONSIBLE FOR ENSURING THE FOUNDATION IS DESIGNED FOR THE BUILDING BY A PROFESSIONAL IN ACCORDANCE WITH LOCAL REQUIREMENTS.

T100GBMF014080

BUILDING CONTENT GUIDE:

- [A1]COVER SHEET
- [B1]GENERAL NOTES
- [C1]BUILDING PLAN VIEW
- [D1]MATERIAL SPECIFICATIONS
- [E1]RAFTER PROFILES
- [F1]SIDE PROFILES
- [G1]DETAIL LOCATIONS & BASE DETAILS
- [G2]GENERAL CONNECTION DETAILS
- [G3]CABLE LAYOUT & DETAILS
- [H1]BASE PLATE LAYOUT & DETAILS
- [I]OMITTED
- [J1]BUILDING REACTION DATA
- [K]OMITTED
- [L1 - L3]BOTH ENDWALLS: EW100GBF0400D

DEVELOPED BY



A DIVISION OF
ENGINEERING SERVICES & PRODUCTS CO.
1440 18TH AVENUE SW
DYERSVILLE, IA 52040
P: 563.875.6113
F: 563.875.2317
WWW.ESAPCO.COM

ORDER #:
7254927

CUSTOMER #:
6503439

CUSTOMER INFORMATION: CHRIS CRAFT BOATS 8161 15TH STE SARASOTA, FL 34243-2709		STRUCTURE SKU #: T100GBMF014080
CUSTOMER CONTACT: MATT MCGINNIS	CONTACT PHONE: 941-358-3751	STRUCTURE SIZE: 100' X 80'
SHEET TITLE: COVER SHEET		STRUCTURE DESCRIPTION: 1

DRAWING DETAILS			
DRAWN BY: SMN		CREATION DATE: 1/6/2017	
REVISIONS:			
NO.	BY:	REVISION DATE:	
1			
2			
3			
4			
NOT TO SCALE		SHEET SIZE: 11X17	
SHEET:			
A1			

SITE LOCATION AND BUILDING DESCRIPTION:

SITE LOCATION: 8161 15TH ST E
SARASOTA, FL 34243
SARASOTA COUNTY

BUILDING SIZE: 100' X 80': 8,000 SQUARE FEET
BUILDING TYPE: PRE-ENGINEERED FABRIC STRUCTURE
CONSTRUCTION TYPE: VB
FABRIC: NON FIRE-RATED

GENERAL NOTES:

1. DESIGNED IN CONFORMANCE WITH THE STRUCTURAL PROVISIONS OF THE FLORIDA BUILDING CODE, 2014 EDITION.

2. DESIGN LOADS:

- A. FLOOR LIVE LOAD: N/A
B. ROOF LIVE LOAD: 5 PSF (FABRIC ROOF)
C. ROOF SNOW LOADS:

Pg (GROUND SNOW LOAD) = 0 PSF
Ce (SNOW EXPOSURE FACTOR) = 0.9 (FULLY EXPOSED TERRAIN CATEGORY C)
Ct (THERMAL FACTOR) = 1.2 (COLD ROOF)
Is (SNOW IMPORTANCE FACTOR) = 0.8 (RISK CATEGORY I)
Pf (FLAT ROOF SNOW LOAD) = 0.0 PSF
Ps (SLOPED ROOF SNOW LOAD) = Cs Pf
Cs (SLOPE FACTOR) = AS DETERMINED FOR GABLE OR ARCHED ROOF PER ASCE 7 (BALANCED AND UNBALANCED LOADING CONDITIONS CONSIDERED)

SNOW DRIFTING FROM ADJACENT BUILDINGS, STRUCTURES, OR ANY OTHER HORIZONTAL SURFACES HAS NOT BEEN CONSIDERED.

D. WIND DESIGN DATA: (MAIN WIND FORCE RESISTING SYSTEM)

V (ULTIMATE WIND SPEED) = 150 MPH
Kd (WIND DIRECTIONALITY FACTOR) = 0.85
Kzt (WIND TOPOGRAPHIC FACTOR) = 1.0 (ASSUMED)
EXP (EXPOSURE CATEGORY) = C
GCpi (INT. PRES. COEFF.) = +/-0.18 (ENCLOSED)
Cp (EXT. PRES. COEFF.) = AS DETERMINED FOR GABLE OR ARCHED ROOF: PER ASCE 7

COMPONENTS AND CLADDING WIND PRESSURE: PER ASCE 7

E. EARTHQUAKE DESIGN DATA: (EQUIV. LATERAL FORCE METHOD)
SEISMIC DESIGN CATEGORY = A
RISK CATEGORY = I, SEISMIC IMPORTANCE FACTOR = 1.0
Ss = 0.053 g, S1 = 0.028 g, SITE CLASS: D
SDS = 0.057 g, SD1 = 0.045 g
Cs = 0.019, R = 3, SEISMIC BASE SHEAR = 0.71 KIPS
BASIC SEISMIC-FORCE-RESISTING SYSTEM =
STEEL SYSTEMS NOT SPECIFICALLY DETAILED FOR SEISMIC RESISTANCE.

3. THE TRUSSES ARE DESIGNED TO ACCOMMODATE LIMITED ADDITIONAL WEIGHT. ADDITIONAL LOADS, SUCH AS FOR LIGHTING, HEATING, AND VENTILATING EQUIPMENT, SHALL NOT EXCEED 1000 LBS. PER ASSEMBLED TRUSS, WITHOUT THE WRITTEN APPROVAL OF THE DESIGN ENGINEER. LOADS SHALL BE APPLIED AT PANEL POINTS (POINTS OF CONTACT BETWEEN TRUSS WEB AND CHORD), AND SHALL BE DISTRIBUTED SO THAT NO MORE THAN 150 LBS. IS SUSPENDED FROM ANY SINGLE LOCATION.

FOUNDATION:

1. FOUNDATION AND ANCHORING SHALL BE ENGINEERED AND APPROVED BY A LOCALLY LICENSED STRUCTURAL ENGINEER TO ACCOUNT FOR THE BUILDING REACTION DATA SHOWN ON SHEET [J1].

GENERAL ABBREVIATIONS:

TOS TOP OF STEEL / TSL TOP OF SLAB / GALV. GALVANIZED /
FND FOUNDATION / EL ELEVATION / RND. ROUND /
GA GAUGE / DIA. DIAMETER / TYP. TYPICAL / LBS. POUNDS /
CL CENTERLINE

SITE CONDITIONS:

1. NEITHER CLEARSPAN NOR THE BUILDING ENGINEER HAVE VISITED THIS JOBSITE. INFORMATION CONTAINED HEREIN IS BASED ON CLIENT SUPPLIED DATA AND MEASUREMENTS. THE DESIGN AND DEPICTED FABRICATION, ERECTION, AND FOUNDATION DRAWINGS ARE ONLY VALID FOR THE EXACT DESIGN PARAMETERS AND COMBINATIONS OF PARAMETERS DOCUMENTED. NEITHER CLEARSPAN NOR THE BUILDING ENGINEER SHALL BE HELD RESPONSIBLE OR LIABLE IN ANY WAY FOR ERRONEOUS OR INACCURATE DATA OR MEASUREMENTS. WORK SHALL BE FIELD VERIFIED BY THE CONTRACTOR PRIOR TO CONSTRUCTION. CLEARSPAN AND/OR THE BUILDING ENGINEER SHALL BE NOTIFIED AND GIVEN AN OPPORTUNITY TO RE-EVALUATE THEIR WORK UPON DISCOVERY OF ANY INACCURATE INFORMATION PRIOR TO MODIFICATION OF EXISTING FIELD CONDITIONS AND FABRICATION AND INSTALLATION OF MATERIALS.

STEEL:

1. UNLESS OTHERWISE NOTED, ALL STRUCTURAL STEEL TUBING SHALL BE GALVANIZED, MIN. YIELD STRENGTH 50 KSI, AND SHALL MEET OR EXCEED THE REQUIREMENTS OF ASTM A500.

2. UNLESS OTHERWISE NOTED, STEEL PLATES SHALL COMPLY WITH ASTM A572 GRADE 50 OR EQUAL FOR 3/16" OR GREATER THICKNESS AND ASTM A1011 GRADE 50 OR ASTM A653 GRADE 50 OR EQUAL FOR LESS THAN 3/16" THICKNESS.

3. ALL STRUCTURAL STEEL IS TO BE FABRICATED IN ACCORDANCE WITH THE LATEST EDITION OF AISC "SPECIFICATION FOR THE DESIGN, FABRICATION AND ERECTION OF STRUCTURAL STEEL FOR BUILDINGS."

BOLTS:

1. UNLESS OTHERWISE NOTED, ALL BOLTED CONNECTIONS SHALL USE GRADE 2 OR A307 OR BETTER BOLTS WITH COMPATIBLE WASHERS AND NUTS OF DIAMETERS INDICATED ON PLANS. BOLTS NEED ONLY BE TIGHTENED TO THE SNUG-TIGHT CONDITION. THE SNUG-TIGHT CONDITION IS DEFINED AS THE TIGHTNESS ATTAINED BY A FEW IMPACTS OF AN IMPACT WRENCH, OR THE FULL EFFORT OF A MAN USING AN ORDINARY SPUD WRENCH.

CABLES AND HARDWARE:

1. ALL CABLE SHALL BE GALVANIZED STEEL, MULTIPURPOSE, 7X19 (UP TO 3/8" DIA.) OR 6X26 (1/2" DIA.) CLASS STRAND CORE COMMERCIAL GRADE, OF DIAMETER INDICATED.

2. CABLE SLEEVES SHALL BE INSTALLED PER MANUFACTURER'S RECOMMENDATIONS.

3. USE THIMBLES WITH CABLE SLEEVES IN ALL LOOP-END APPLICATIONS.

4. TENSION CABLES AT TURNBUCKLE TO TAUT CONDITION (STRAIGHT AND NOT SLACK OR LOOSE).

5. TIGHTEN CABLES SEQUENTIALLY TO AVOID TWISTING OR DEFORMING STRUCTURAL ELEMENTS DURING ERECTION. RECHECK PREVIOUSLY TIGHTENED CABLES UNTIL ALL CABLES ACHIEVE TAUT CONDITION.

WELDING:

1. ALL WELDING SHALL BE IN ACCORDANCE WITH THE LATEST EDITION OF AWS D1.1 AND D1.3.

2. REFER TO AWS PUBLICATION D19.0-72: WELDING ZINC-COATED STEEL AND "WELDING GUIDELINES" PUBLISHED BY ALLIED TUBE AND CONDUIT- HARVEY ILLINOIS, FOR RECOMMENDED PROCESSES AND PRACTICES FOR WELDING GALVANIZED STEEL.

3. ALL SHOP WELDING IS TO BE PERFORMED BY CERTIFIED WELDERS.

PAINTING AND TOUCH-UP:

1. AFTER SHOP FABRICATION, PAINT ALL BARE STEEL, WELDS, AND ABRADED AREAS WITH COLD GALVANIZING COMPOUND CONSISTENT WITH GALVANIZED TUBE MANUFACTURER'S RECOMMENDATIONS FOR COLOR AND COMPOSITION. PRIOR TO TOUCH-UP, CLEAN WELDED AND ABRADED AREAS WITH A WIRE BRUSH. SURFACES MUST BE CLEAN AND OIL FREE.

2. AFTER FIELD INSTALLATION, TOUCH-UP ANY FIELD WELDS AND DAMAGED AREAS WITH COLD GALVANIZING COMPOUND.

ERECTION AND FIELD QUALITY CONTROL:

1. THE ERECTOR IS RESPONSIBLE FOR DESIGNING AND FURNISHING ALL TEMPORARY BRACING, SHORING, AND/OR SUPPORT THAT MAY BE REQUIRED AS THE RESULT OF ERECTOR'S CONSTRUCTION METHODS AND/OR SEQUENCES. THE STRUCTURE IS DESIGNED TO FUNCTION AS A UNIT UPON COMPLETION. THE STRUCTURAL ENGINEER ASSUMES NO LIABILITY FOR THE STRUCTURE DURING ERECTION.

2. NO MODIFICATIONS OR ALTERATIONS (OTHER THAN THOSE SHOWN ON THE DRAWINGS) SHALL BE MADE IN ANY STRUCTURAL MEMBER OR CONNECTION WITHOUT THE WRITTEN APPROVAL OF THE DESIGN ENGINEER.

BOX BOLT HOLE SIZES & INSTALLATION TORQUE¹

BOX BOLT DIA.	HOLE DIA.	INSTALLATION TORQUE
1/4"	1/2"	14 FT-LB
5/16"	5/8"	18 FT-LB
3/8"	3/4"	33 FT-LB
1/2"	13/16"	59 FT-LB
5/8"	1-1/8"	140 FT-LB
3/4"	1-3/8"	221 FT-LB

1. REFER TO BOX BOLT TECHNICAL DATA FOR MORE INFORMATION IF USING BOX BOLTS



ORDER #:
7254927

CUSTOMER #:
6503439

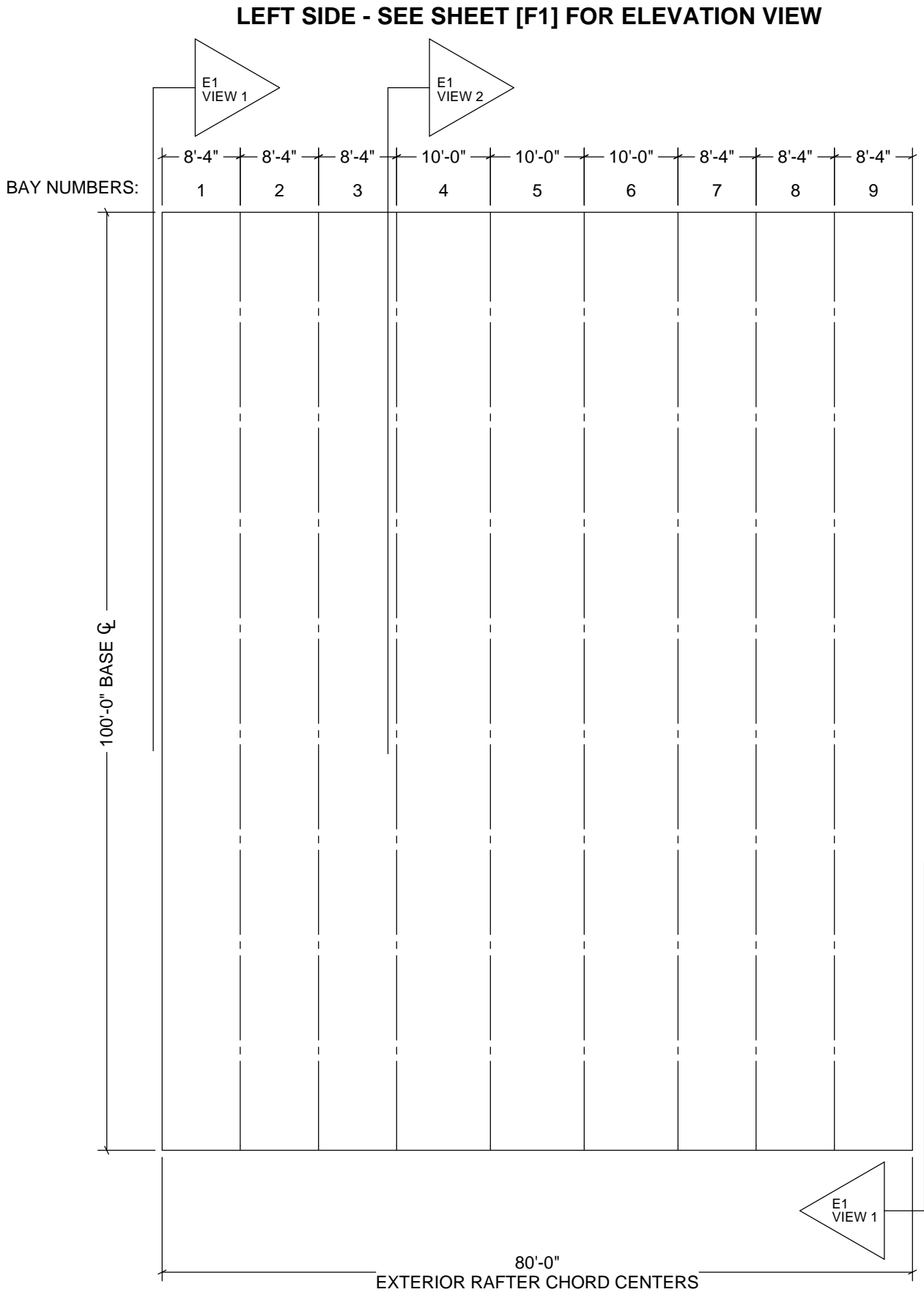
CUSTOMER INFORMATION: CHRIS CRAFT BOATS 8161 15TH STE SARASOTA, FL 34243-2709	STRUCTURE SKU #: T100GBMF014080	STRUCTURE SIZE: 100' X 80'	STRUCTURE DESCRIPTION: 1
	CONTACT PHONE: 941-358-3751	CUSTOMER CONTACT: MATT MCGINNIS	SHEET TITLE: GENERAL NOTES

DRAWING DETAILS		
DRAWN BY: SMN		CREATION DATE: 1/6/2017
REVISIONS:		
NO.	BY:	REVISION DATE
1		
2		
3		
4		
NOT TO SCALE		SHEET SIZE: 11X17

SHEET:

B1

FRONT ENDWALL: EW100GBF0400D
SEE SHEET [L1] FOR ELEVATION VIEW



RIGHT SIDE - SEE SHEET [F1] FOR ELEVATION VIEW

BACK ENDWALL: EW100GBF0400D
SEE SHEET [L1] FOR ELEVATION VIEW

DEVELOPED BY



A DIVISION OF
ENGINEERING SERVICES & PRODUCTS CO.
1440 16TH AVENUE SW
DYERSVILLE, IA 52040
P: 563.875.6113
F: 563.875.2317
WWW.ESAPCO.COM

ORDER #:

7254927

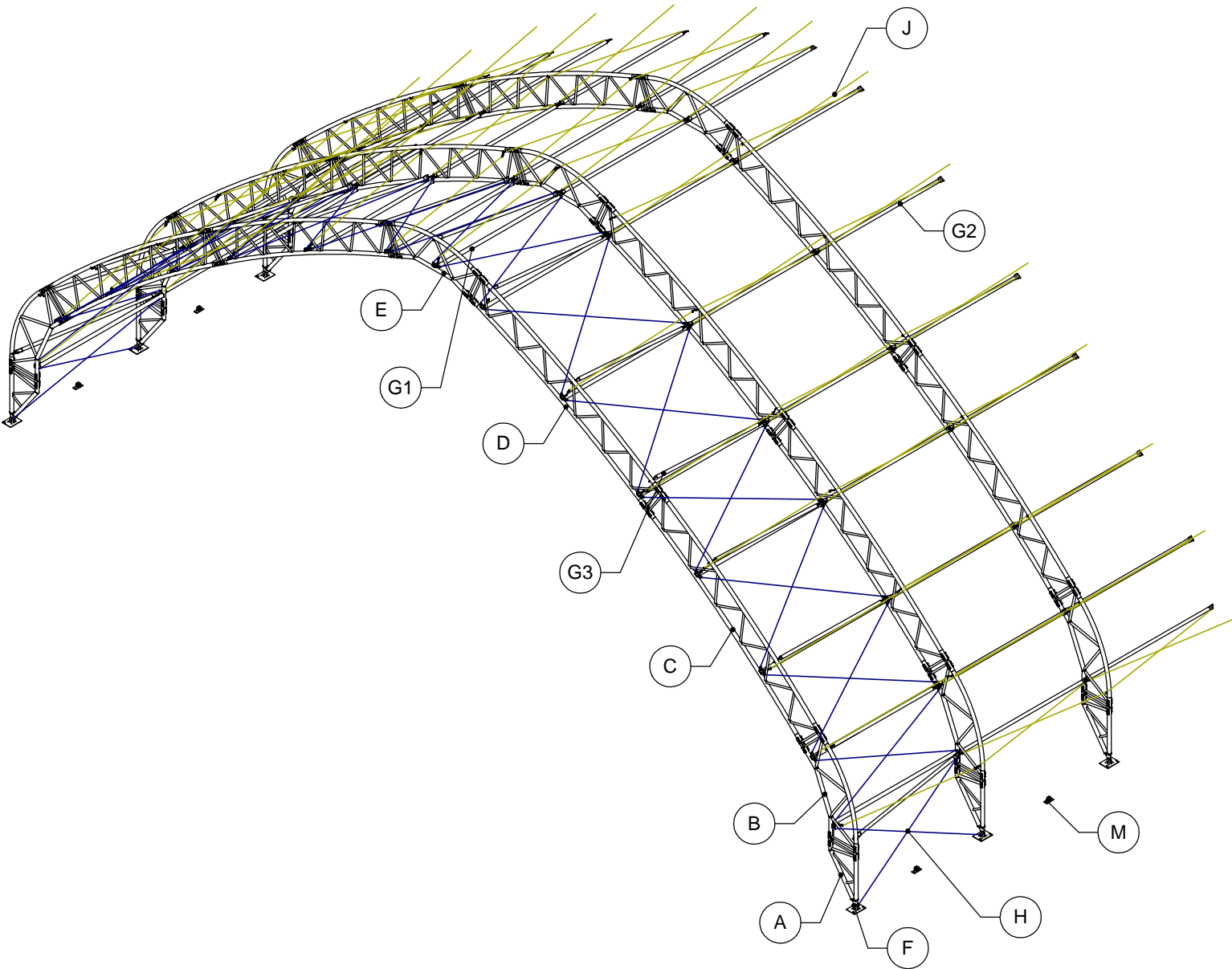
CUSTOMER #:

6503439

CUSTOMER INFORMATION: CHRIS CRAFT BOATS 8161 15TH STE SARASOTA, FL 34233-2709	STRUCTURE SKU #: T100GBMF014080	STRUCTURE SIZE: 100' X 80'	
	CONTACT PHONE: 941-358-3751	STRUCTURE DESCRIPTION: 1	
CUSTOMER CONTACT: MATT MCGINNIS		SHEET TITLE: BUILDING PLAN VIEW	

DRAWING DETAILS			
DRAWN BY: SMN		CREATION DATE: 1/6/2017	
REVISIONS:			
NO.	BY:	REVISION DATE:	
1			
2			
3			
4			
NOT TO SCALE		SHEET SIZE: 11X17	
SHEET:			
C1			

ITEM	DESCRIPTION	MATERIAL
A	SUPPORT BASE	
	OUTER CHORD	GALV. RND. STEEL TUBE - Ø 4.0" - 7 GA
	INNER CHORD	GALV. RND. STEEL TUBE - Ø 4.0" - 7 GA
	WEB (STRAIGHT)	GALV. RND. STEEL TUBE - Ø 1.90" - 14 GA
	WEB (ANGLED)	GALV. RND. STEEL TUBE - Ø 1.9", 2.375" - 14 GA
	PIVOT PLATE (CHORD)	STEEL PLATE, 1/2" THICK
	PIVOT PLATE (ROUND)	STEEL PLATE, 1/2" THICK
B&E	SEGMENT	
	OUTER CHORD	GALV. RND. STEEL TUBE - Ø 4.0" - 7 GA
	INNER CHORD	GALV. RND. STEEL TUBE - Ø 4.0" - 7 GA
	WEB (STRAIGHT)	GALV. RND. STEEL TUBE - Ø 1.90" - 14 GA
	WEB (ANGLED)	GALV. RND. STEEL TUBE - Ø 2.375" - 14 GA
C&D	SEGMENT	
	OUTER CHORD	GALV. RND. STEEL TUBE - Ø 4.0" - 10 GA
	INNER CHORD	GALV. RND. STEEL TUBE - Ø 4.0" - 10 GA
	WEB (STRAIGHT)	GALV. RND. STEEL TUBE - Ø 1.90" - 14 GA
	WEB (ANGLED)	GALV. RND. STEEL TUBE - Ø 1.90" - 14 GA
F	BASES	
	HORIZONTAL	STEEL PLATE, 1/2" THICK
	VERTICAL (ROUNDED)	STEEL PLATE, 3/8" THICK
	THREADED STUD	CFL FULLY THREADED STUD - 1/2"-13 x 1"
	GUSSETS	STEEL PLATE, 3/8" THICK
G	BRACING	
	LATERAL BRACING (END)	GALV. RND. STEEL TUBE - Ø 3.5" - 14 GA
	LATERAL BRACING (MID)	GALV. RND. STEEL TUBE - Ø 2.875" - 14 GA
	ANGLED BRACE	GALV. RND. STEEL TUBE - Ø 2.875" - 14 GA
	THREADED STUD PLATE	1/4" PLATE W/ 1/2" X 2" STUDS
	AB CONNECTION PLATE	STEEL PLATE, 1/4" THICK
H	CABLE ASSEMBLY	SEE SHEET G3
	CABLE CONNECTION PLATE	STEEL PLATE, 5/16" THICK
J	SWAY CABLE ASSEMBLY	SEE SHEET G3
	CABLE CONNECTION PLATE	STEEL PLATE, 1/8" THICK
K	SPLICE	
	SPLICE OUTSERTS	FORMED STEEL BAR, 5/16" THICK
L	WINCH ASSEMBLY	
	WINCH	2" LASHING WINCH (10,000 LBS. STRENGTH)
	STRAP	2" STRAP (10,000 LBS. STRENGTH)
M	WINCH PLATE	
	HORIZONTAL	STEEL PLATE, 1/2" THICK
	THREADED STUDS	CFL FULLY THREADED STUD - 1/2"-13 x 1"



NOTE: THIS VIEW IS GENERIC TO ILLUSTRATE LOCATIONS OF ITEMS IN THE TABLE ONLY. CABLE PATTERN AND/OR OTHER DETAILS MAY NOT FULLY MATCH THE SPECIFICS FOR THIS ORDER. SEE OTHER SHEETS FOR ORDER-SPECIFIC DETAILS.

DEVELOPED BY



A DIVISION OF
ENGINEERING SERVICES & PRODUCTS CO.
1440 18TH AVENUE SW
DYERSVILLE, IA 52040
P: 563.875.6113
F: 563.875.2317
WWW.ESAPCO.COM

ORDER #:

7254927

CUSTOMER #:

6503439

CUSTOMER INFORMATION:
CHRIS CRAFT BOATS
8161 15TH STE
SARASOTA, FL 34237-709

STRUCTURE SKU #:
T100GBMF014080

CUSTOMER CONTACT:
MATT MCGINNIS

CONTACT PHONE:
941-358-3751

SHEET TITLE:
MATERIAL SPECIFICATIONS

STRUCTURE SIZE:
100' X 80'

STRUCTURE DESCRIPTION:

DRAWING DETAILS

DRAWN BY:
SMN

CREATION DATE:
1/6/2017

REVISIONS:

NO.	BY:	REVISION DATE:
1		
2		
3		
4		

NOT TO SCALE

SHEET SIZE: 11X17

SHEET:

D1

*NOTE: REFER TO SHEET [H1] FOR END RAFTER BASE SKU.

DEVELOPED BY



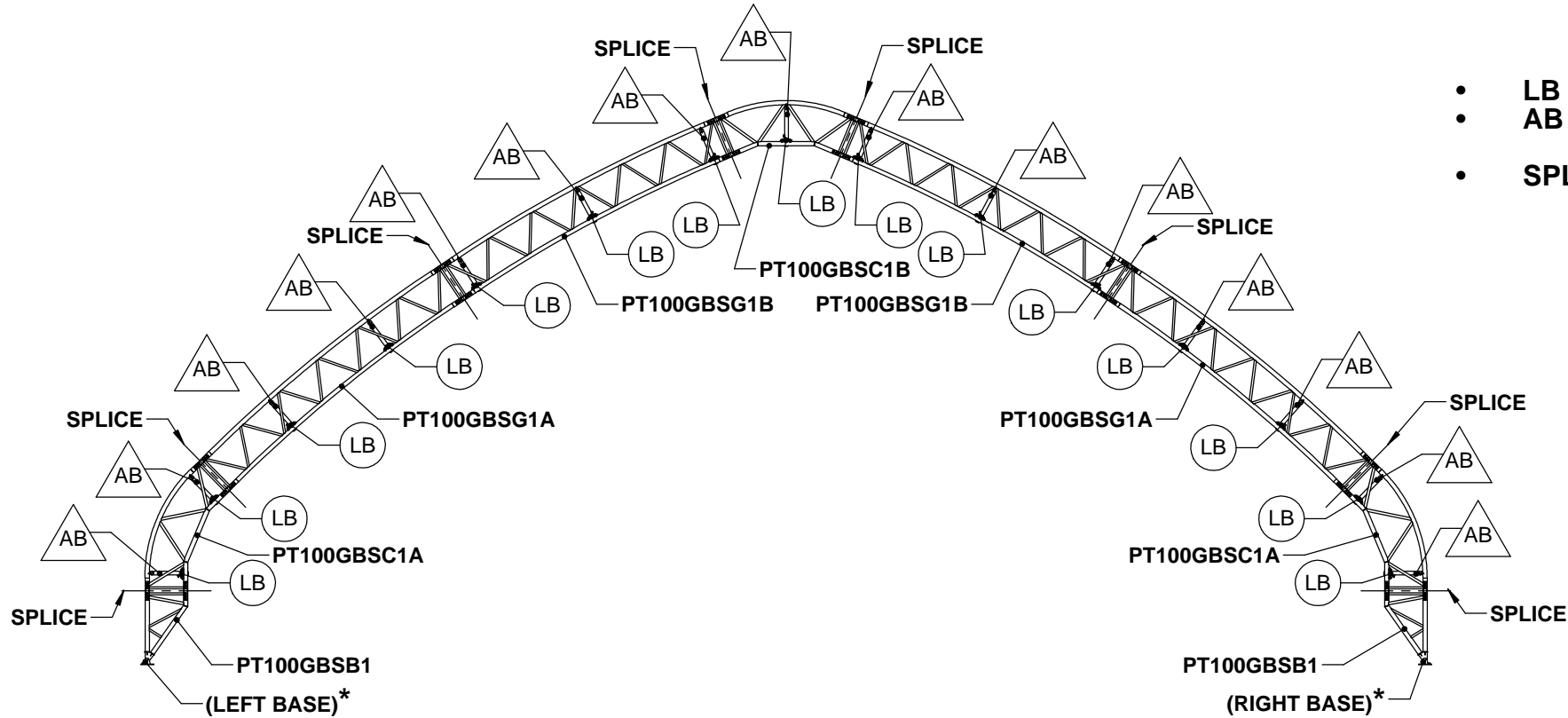
A DIVISION OF
ENGINEERING SERVICES & PRODUCTS CO.
1440 18TH AVENUE SW
DYERSVILLE, IA 52040
P: 563.875.6113
F: 563.875.2317
WWW.ESAPCO.COM

ORDER #:

7254927

CUSTOMER #:

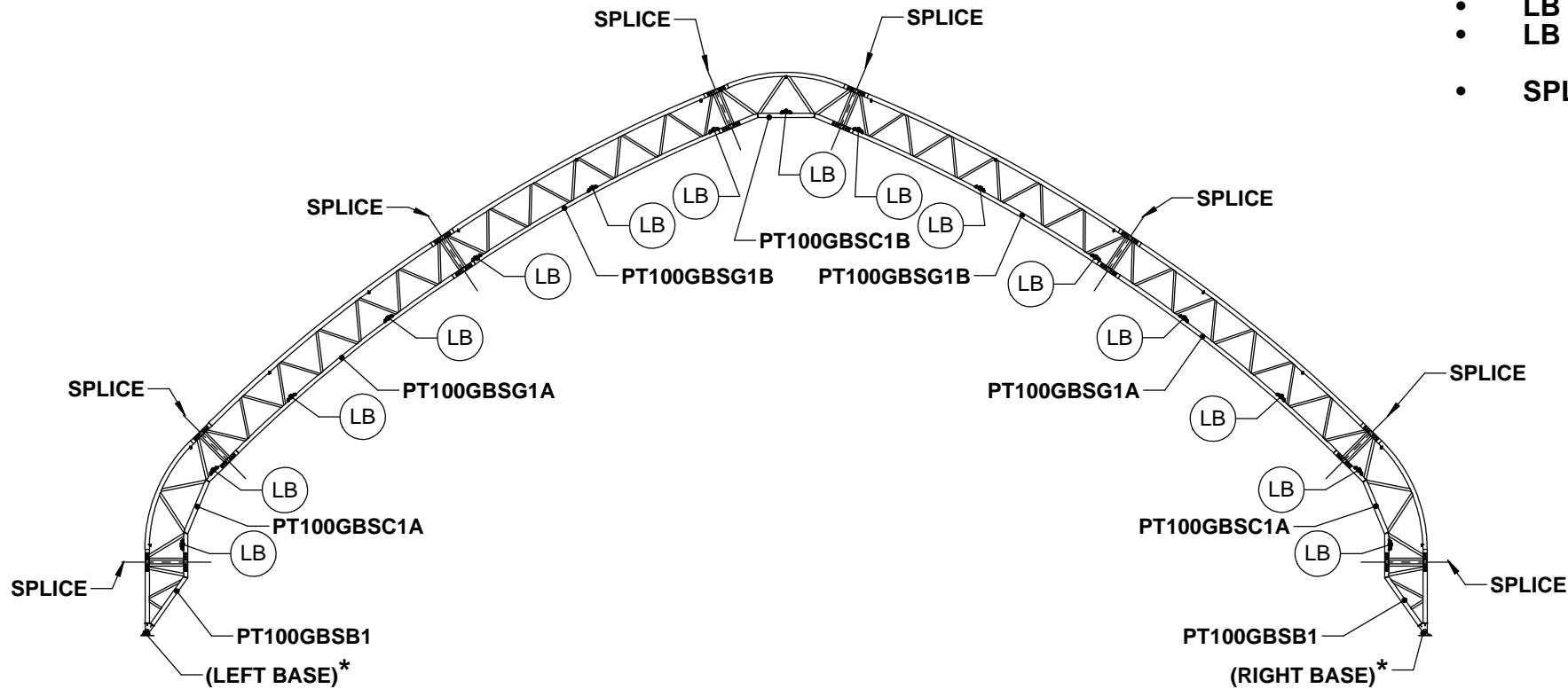
6503439



- LB** = LATERAL BRACE (SKU: **LBC35G14UBL100**)
- AB** = ANGLED BRACE (SKU: **LB28G14SL09581**)
- SPLICE**: SEE DETAIL SHEET [G2]

[E1] VIEW 1 - FRONT PROFILE (END RAFTER)

*NOTE: REFER TO SHEET [H1] FOR MID RAFTER BASE SKU.



- LB** = LATERAL BRACE @ 8'-4" BAYS (SKU: **LB28G14STL100**)
- LB** = LATERAL BRACE @ 10'-0" BAYS (SKU: **LB28G14STL120**)
- SPLICE**: SEE DETAIL SHEET [G2]

[E1] VIEW 2 - FRONT PROFILE (MID RAFTER)

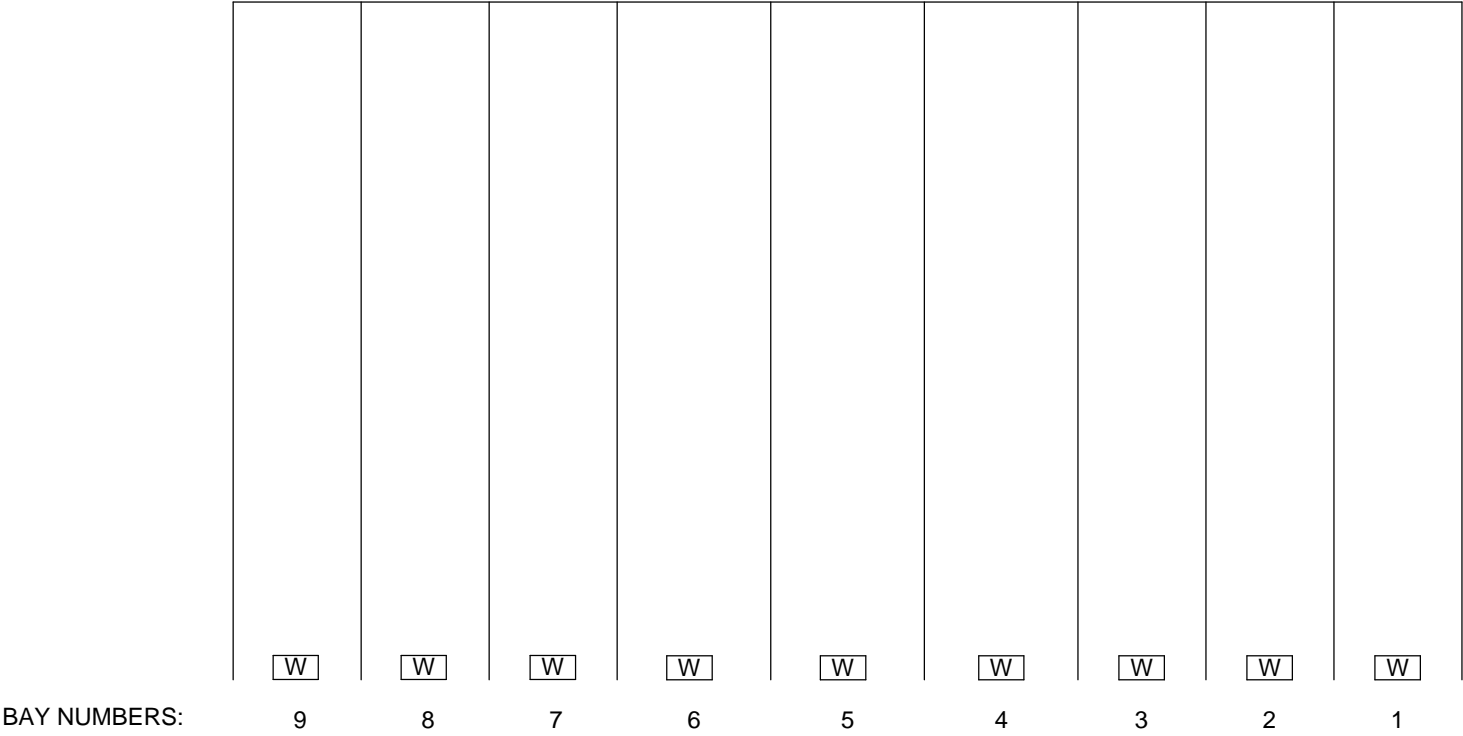
CUSTOMER INFORMATION: CHRIS CRAFT BOATS 8161 15TH ST E SARASOTA, FL 34243-2709		STRUCTURE SKU #: T100GBMF014080	
CUSTOMER CONTACT: MATT MCGINNIS	CONTACT PHONE: 941-358-3751	STRUCTURE SIZE: 100' X 80'	STRUCTURE DESCRIPTION: 1
SHEET TITLE: RAFTER PROFILES			

DRAWING DETAILS		
DRAWN BY: SMN		CREATION DATE: 1/6/2017
REVISIONS:		
NO.	BY:	REVISION DATE:
1		
2		
3		
4		
NOT TO SCALE		SHEET SIZE: 11X17
SHEET:		

SHEET:

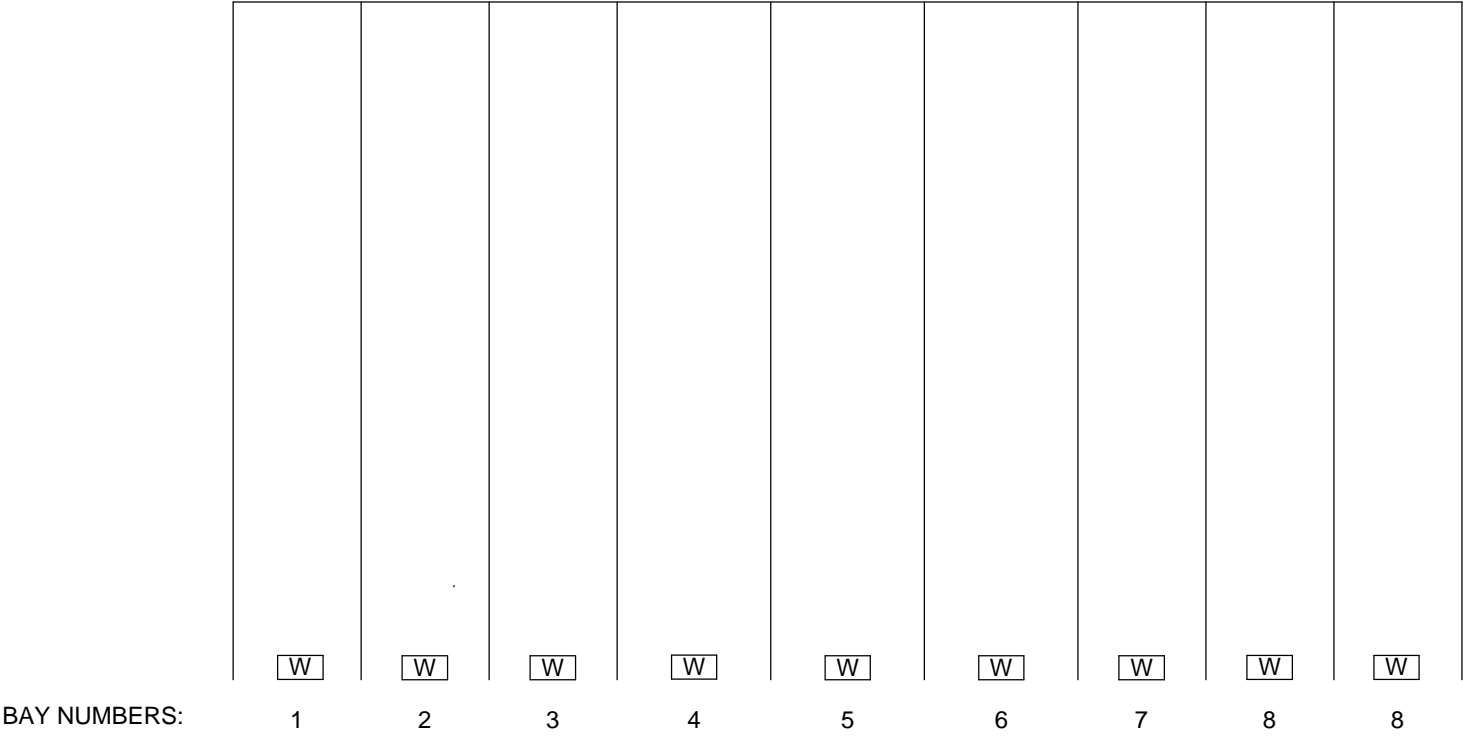
NOTE: REFER TO SHEET [E1] FOR FRONT PROFILE OF BRACE LOCATIONS
& SHEET [C1] FOR PLAN VIEW OF DOOR LOCATIONS (IF APPLICABLE).

BACK OF STRUCTURE



LEFT SIDE VIEW

FRONT OF STRUCTURE



RIGHT SIDE VIEW

FRONT OF STRUCTURE

BACK OF STRUCTURE

W = WINCH PLATE LOCATION

NOTE: WINCH PLATES (IF APPLICABLE) TO BE CENTERED
BETWEEN RAFTERS, UNLESS NOTED OTHERWISE.

DEVELOPED BY



A DIVISION OF
ENGINEERING SERVICES & PRODUCTS CO.
1440 18TH AVENUE SW
DYERSVILLE, IA 52040
P: 563.875.6113
F: 563.875.2317
WWW.ESAPCO.COM

ORDER #:

7254927

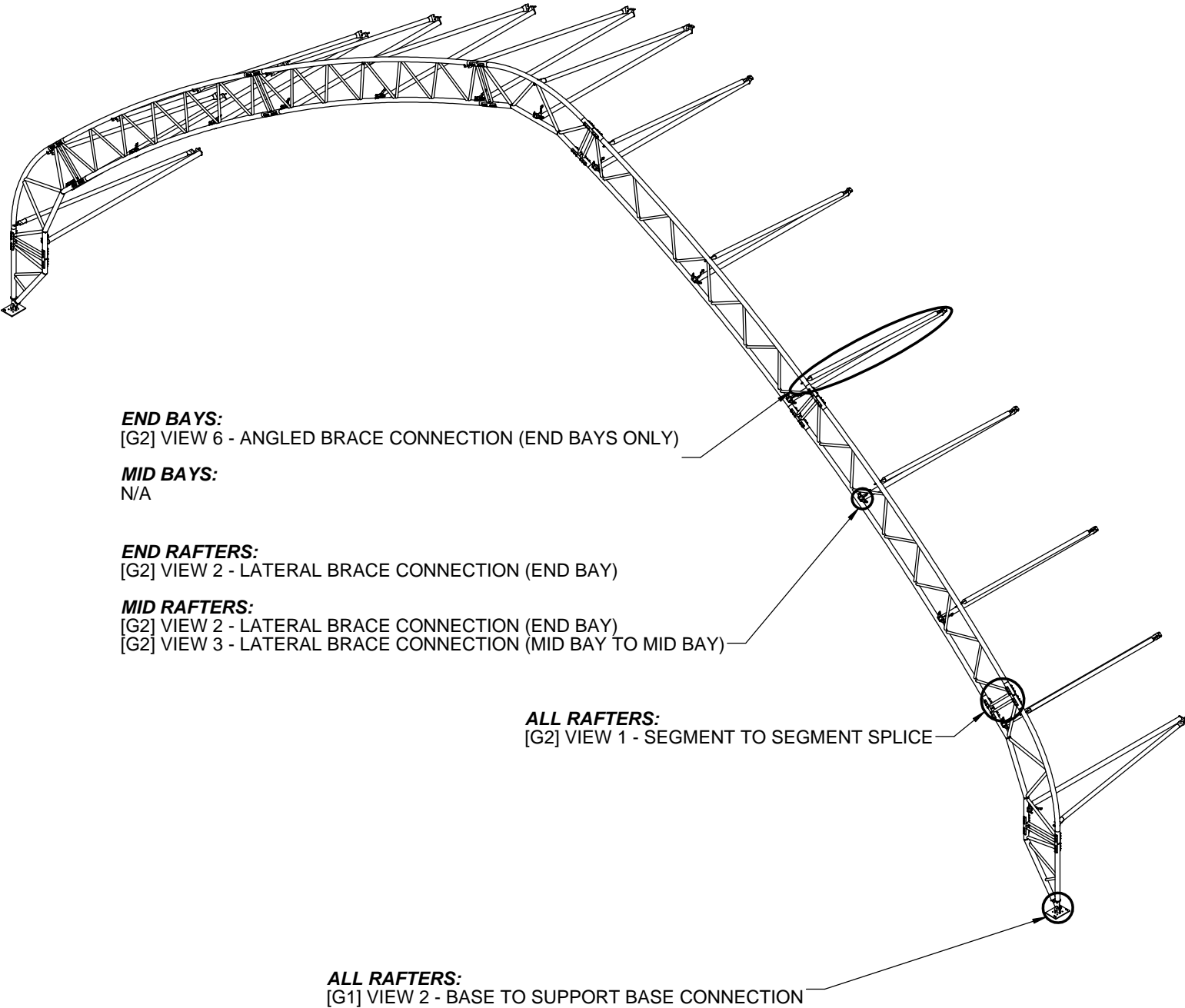
CUSTOMER #:

6503439

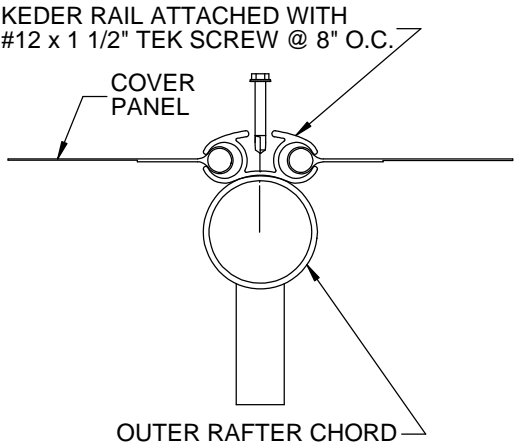
CUSTOMER INFORMATION: CHRIS CRAFT BOATS 8161 15TH STE SARASOTA, FL 34232-7709	STRUCTURE SKU #: T100GBMF014080	STRUCTURE SIZE: 100' X 80'	STRUCTURE DESCRIPTION: 1
	CUSTOMER CONTACT: MATT MCGINNIS	CONTACT PHONE: 941-358-3751	
SHEET TITLE: SIDE PROFILES			

DRAWING DETAILS		
DRAWN BY: SMN		CREATION DATE: 1/6/2017
REVISIONS:		
NO.	BY:	REVISION DATE:
1		
2		
3		
4		
NOT TO SCALE		SHEET SIZE: 11X17
SHEET: F1		

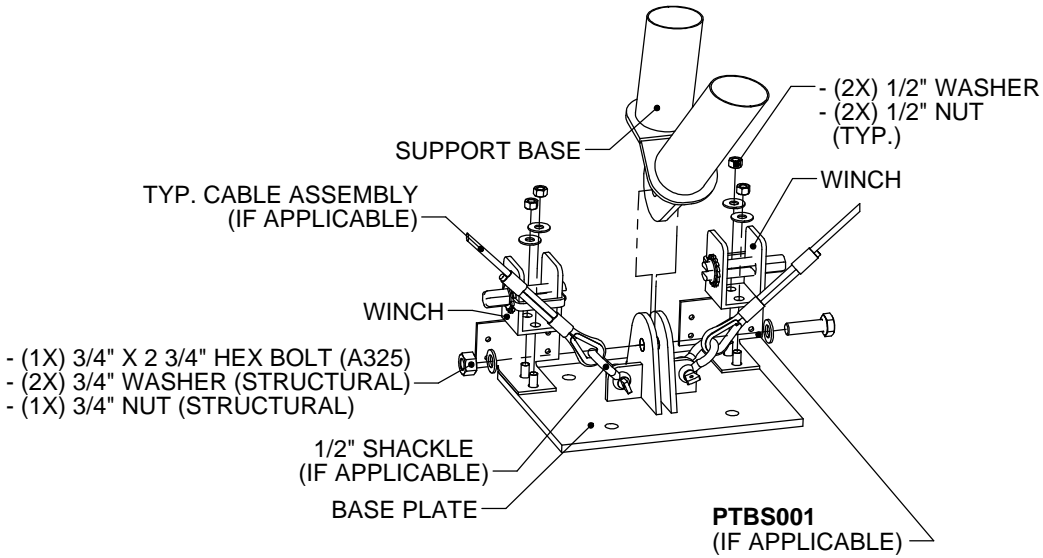
DETAIL LOCATION CALL-OUTS



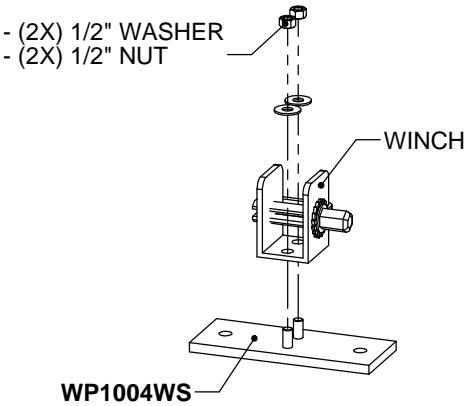
- DETAILS WITH LOCATION CALL-OUTS NOT SHOWN ON THIS SHEET:**
- [G1] VIEW 1 - KEDER ATTACHMENT
 - [G1] VIEW 3 - WINCH PLATE CONNECTION (IF APPLICABLE)
 - [G2] VIEW 4 - SIDE DOOR DETAIL (IF APPLICABLE)
 - [G2] VIEW 5 - U-BOLT BRACE CONNECTION (IF APPLICABLE)
 - [G3] VIEW 1 - CABLE SKU PER SPAN
 - [G3] VIEW 2 - TYPICAL CABLE CONNECTION DETAIL
 - [G3] VIEW 3 - TYPICAL CABLE ASSEMBLY
 - [G3] VIEW 4 - SWAY CABLE LOCATIONS
 - [G3] VIEW 5 - SWAY CABLE CONNECTION (END BAY)
 - [G3] VIEW 6 - SWAY CABLE CONNECTION (MID BAY TO MID BAY)
 - [G3] VIEW 7 - TYPICAL SWAY CABLE ASSEMBLY



[G1] VIEW 1 - KEDER ATTACHMENT



[G1] VIEW 2 - BASE TO SUPPORT BASE CONNECTION



[G1] VIEW 3 - WINCH PLATE
CONNECTION (IF APPLICABLE)

DEVELOPED BY


A DIVISION OF
ENGINEERING SERVICES & PRODUCTS CO.
1440 18TH AVENUE SW
DYERSVILLE, IA 52040
P: 563.875.6113
F: 563.875.2317
WWW.ESAPCO.COM

ORDER #:
7254927

CUSTOMER #:
6503439

CUSTOMER INFORMATION: CHRIS CRAFT BOATS 8161 15TH ST E SARASOTA, FL 34243-2709		STRUCTURE SKU #: T100GBMF014080
CUSTOMER CONTACT: MATT MCGINNIS	CONTACT PHONE: 941-358-3751	STRUCTURE SIZE: 100' X 80'
SHEET TITLE: DETAIL LOCATIONS & BASE DETAILS		STRUCTURE DESCRIPTION: -

DRAWING DETAILS			
DRAWN BY: SMN		CREATION DATE: 1/6/2017	
REVISIONS:			
NO.	BY:	REVISION DATE:	
1			
2			
3			
4			
NOT TO SCALE		SHEET SIZE: 11X17	
SHEET:			
G1			

NOTES:

- END RAFTER BOLT HEADS TO BE LOCATED AT EXTERIOR OF STRUCTURE
- REFER TO SHEET [E1] FOR SPLICE LOCATIONS.

- (2X) SPLICE OUTSERT [SPLOUT40S001]
- (6X) 5/8" X 6" HEX BOLT (A325)
- (12X) 5/8" WASHER (STRUCTURAL)
- (6X) 5/8" NUT (STRUCTURAL)

OUTER RAFTER CHORD

END RAFTER OUTER & INNER
CHORD SPLICES TO BE
WRAPPED WITH COVER
[112405] AND SECURED
WITH (3X) ZIP TIES [112056]

INNER RAFTER
CHORD

EXPLODED VIEW

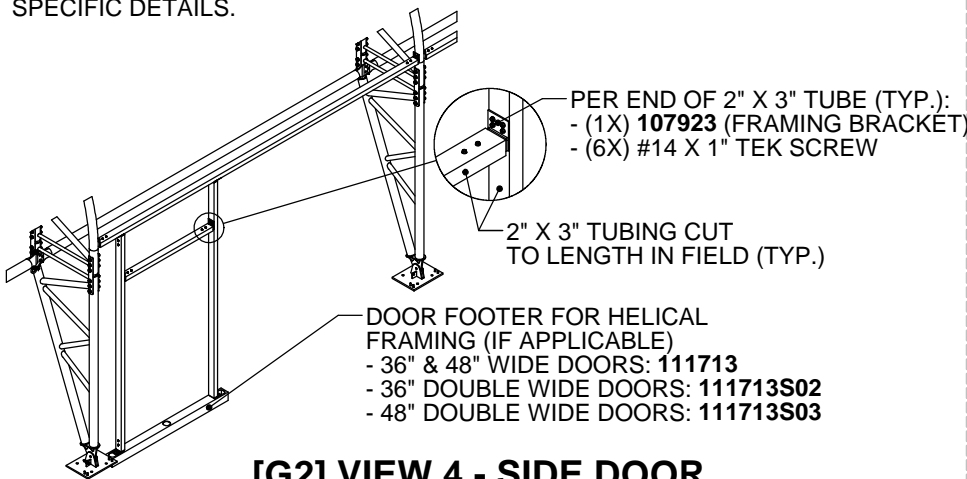
ASSEMBLED VIEW

SEGMENT CHORDS TO BE MANUFACTURED
WITH SLEEVES AT EACH SPLICE BOLT
LOCATION.

INTERNAL CHORD VIEW

[G2] VIEW 1 - SEGMENT TO SEGMENT SPLICE

NOTE: VERIFY ROUGH OPENING PRIOR TO CUTTING TUBE.
NOTE: THIS VIEW IS GENERIC TO ILLUSTRATE MAN DOOR FRAMING
CONNECTIONS. RAFTER STYLE AND/OR OTHER DETAILS MAY NOT FULLY
MATCH THE SPECIFICS FOR THIS PROJECT. SEE OTHER SHEETS FOR ORDER
SPECIFIC DETAILS.



[G2] VIEW 4 - SIDE DOOR DETAIL (IF APPLICABLE)

- DOOR FOOTER FOR HELICAL
FRAMING (IF APPLICABLE)
- 36" & 48" WIDE DOORS: 111713
 - 36" DOUBLE WIDE DOORS: 111713S02
 - 48" DOUBLE WIDE DOORS: 111713S03

- PER END OF 2" X 3" TUBE (TYP.):
- (1X) 107923 (FRAMING BRACKET)
 - (6X) #14 X 1" TEK SCREW

2" X 3" TUBING CUT
TO LENGTH IN FIELD (TYP.)

*****NOTE:** N/A ON END RAFTERS.

- 1/4" SHACKLE***
- (2X) 1/2" WASHER
 - (2X) 1/2" NUT
- SWAY CABLE CONNECTION PLATE [110664***]
- *NOTE:** NOT NEEDED ON 2-BAY STRUCTURES

LATERAL BRACE (END BAYS)

LATERAL BRACE
(MID BAYS)***

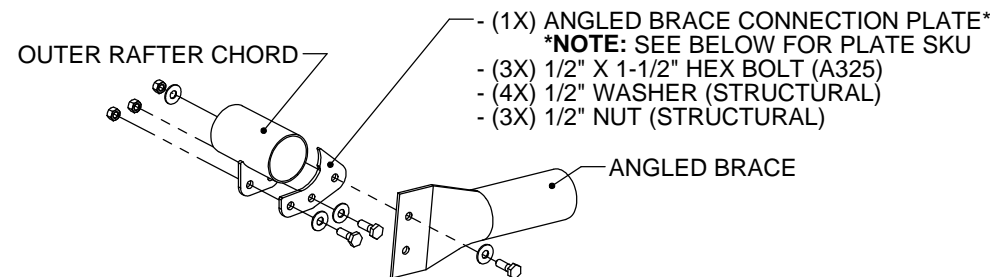
2-WAY CABLE CONNECTION PLATE [107800**]
(IF APPLICABLE)

****NOTE:** USE [107801] WHERE CABLES ARE ON
BOTH SIDES OF RAFTER

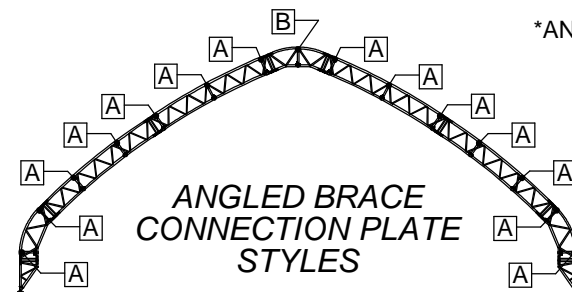
1/2" SHACKLE (TYP.)

INNER RAFTER CHORD

[G2] VIEW 2 - LATERAL BRACE CONNECTION (END BAY)



ANGLED BRACE CONNECTION TO OUTER RAFTER CHORD



ANGLED BRACE
CONNECTION PLATE
STYLES

*ANGLED BRACE CONNECTION PLATE SKU'S:

A PTPLTAB40S01A

B PTPLTAB40S01B

OUTER RAFTER CHORD

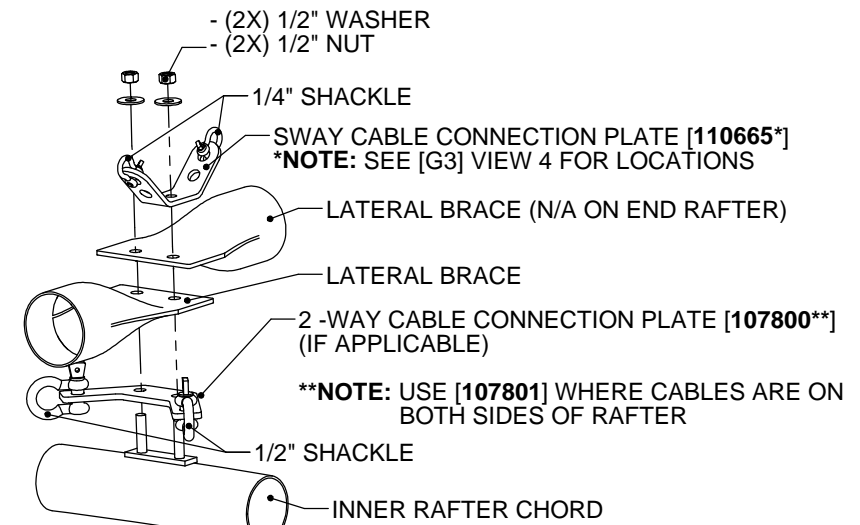
SEGMENT

INNER RAFTER CHORD

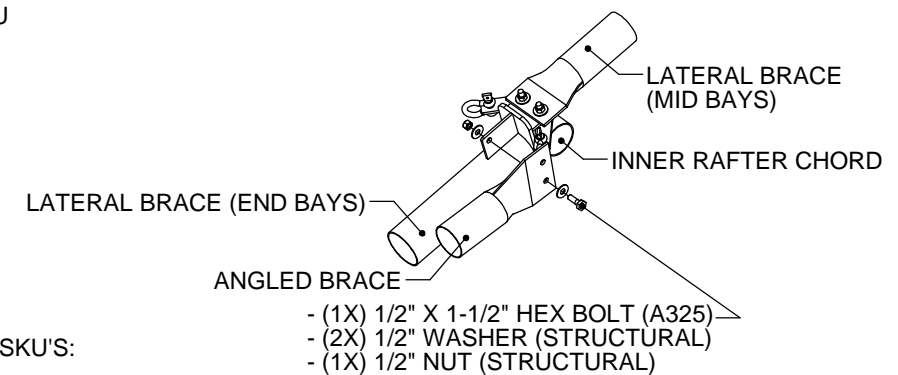
U-BOLT BRACE
SEGMENT

- PER END OF U-BOLT BRACE (TYP.):
- (2X) 1/2" U-BOLT AROUND CHORD
 - (4X) 1/2" WASHER
 - (4X) 1/2" NUT

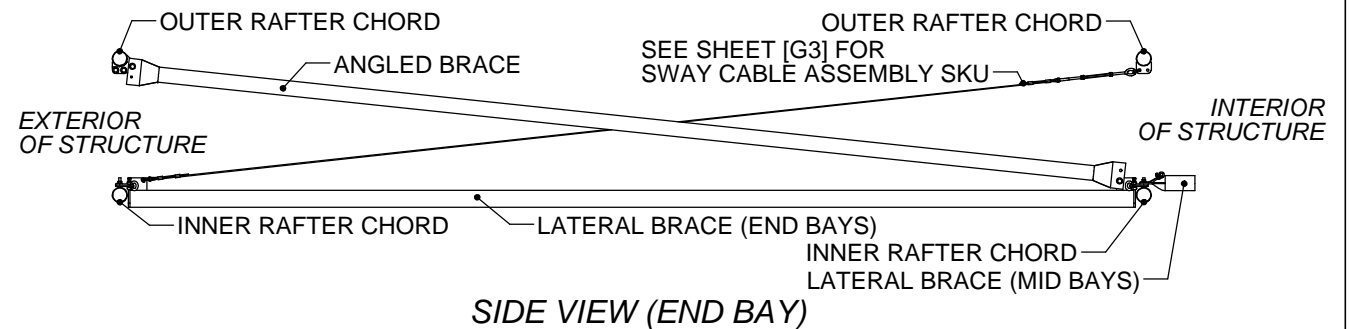
[G2] VIEW 5 - U-BOLT BRACE CONNECTION (IF APPLICABLE)



[G2] VIEW 3 - LATERAL BRACE CONNECTION (MID BAY TO MID BAY)



ANGLED BRACE CONNECTION TO END LATERAL BRACE



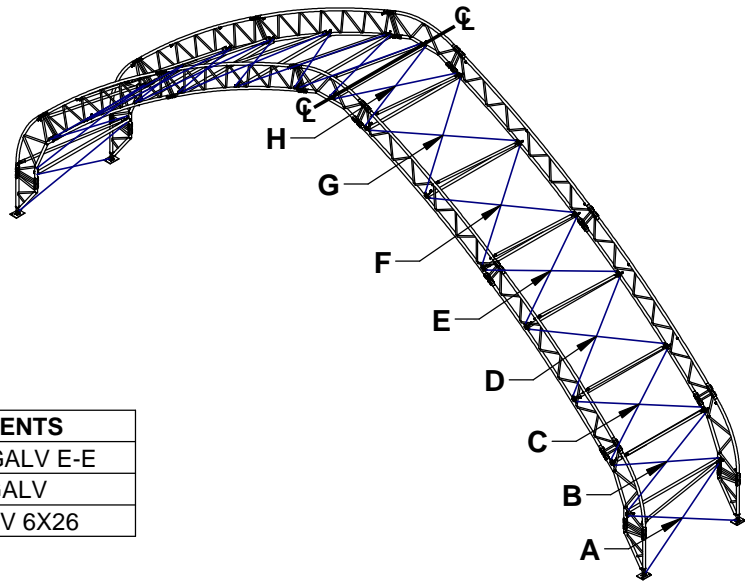
[G2] VIEW 6 - ANGLED BRACE CONNECTION (END BAYS ONLY)

CUSTOMER INFORMATION: CHRIS CRAFT BOATS 8161 15TH STE SARASOTA, FL 34243-2709		STRUCTURE SKU #: T100GBMF014080
CUSTOMER CONTACT: MATT MCGINNIS	CONTACT PHONE: 941-358-3751	STRUCTURE SIZE: 100' X 80'
SHEET TITLE: GENERAL CONNECTION DETAILS		STRUCTURE DESCRIPTION: 1

DRAWING DETAILS		
DRAWN BY: MN		CREATION DATE: 1/6/2017
REVISIONS:		
NO.	BY:	REVISION DATE:
NOT TO SCALE		SHEET SIZE: 11X17
SHEET:		

NOTES:

- RAFTER VIEW SHOWN REPRESENTS TYPICAL CABLE SPAN LABELS TO ILLUSTRATE LOCATIONS OF SPANS IN THE TABLE. THE CABLE PATTERN SHOWN MAY NOT FULLY MATCH THE SPECIFICS FOR THIS PROJECT.
- CABLE PATTERN REPEATS ON OPPOSITE SIDE OF ϕ UNLESS NOTED OTHERWISE.
- CABLE IS NOT PRESENT IN BAY NUMBERS NOT LISTED IN TABLE.



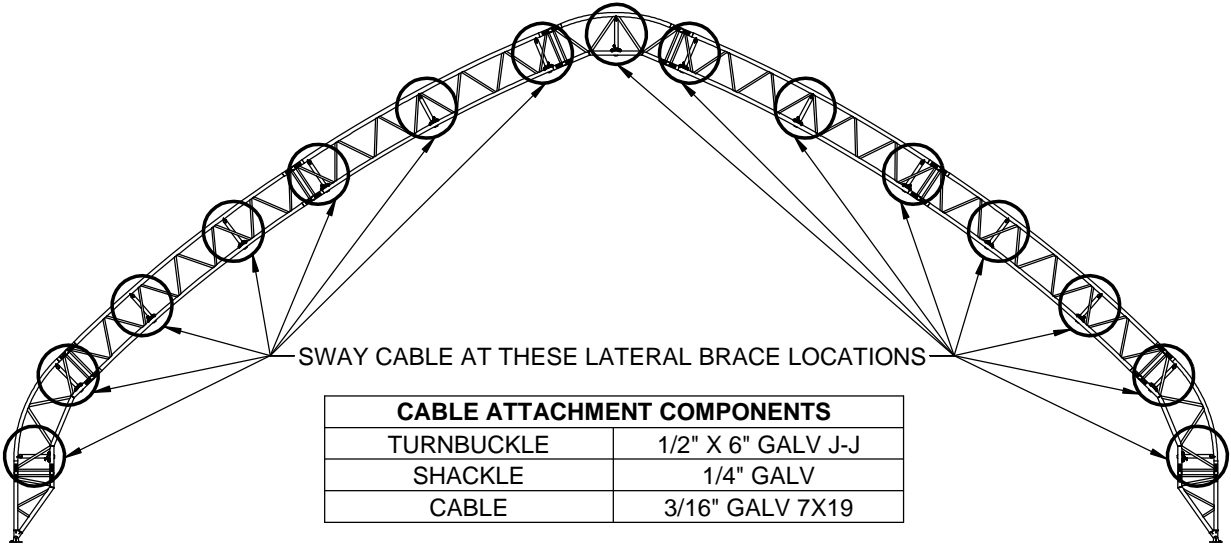
CABLE ATTACHMENT COMPONENTS	
TURNBUCKLE	3/4" X 9" GALV E-E
SHACKLE	1/2" GALV
CABLE	1/2" GALV 6X26

*REFER TO SHEET [C1] FOR BAY NUMBERING

CABLE ASSEMBLY SKU'S								
BAY NUMBER*	SPAN 'A'	SPAN 'B'	SPAN 'C'	SPAN 'D'	SPAN 'E'	SPAN 'F'	SPAN 'G'	SPAN 'H'
1 & 9	CAB50G0800	CAB50G0701	CAB50G0805	CAB50G0905	CAB50G0805	CAB50G1000	CAB50G1000	CAB50G0609
2 & 8	CAB50G0800	CAB50G0701	CAB50G0805	CAB50G0905	CAB50G0805	CAB50G1000	N/A	N/A
3 & 7	CAB50G0800	CAB50G0701	CAB50G0805	CAB50G0905	CAB50G0805	N/A	N/A	N/A
4 & 6	CAB50G0904	CAB50G0806	CAB50G0908	CAB50G1007	N/A	N/A	N/A	N/A
5	CAB50G0904	CAB50G0806	CAB50G0908	N/A	N/A	N/A	N/A	N/A

[G3] VIEW 1 - CABLE SKU PER SPAN

SWAY CABLE REPEATS DOWN LENGTH OF BUILDING AT LOCATIONS SHOWN BELOW

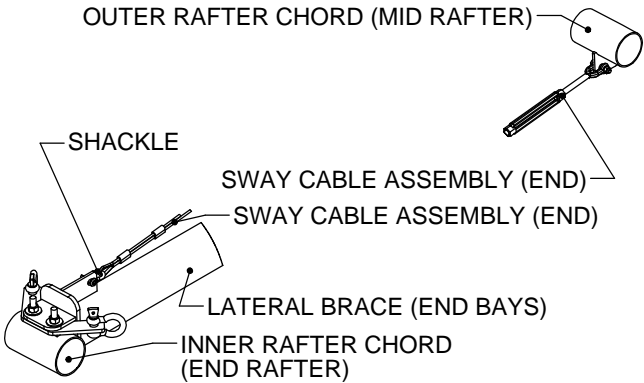


CABLE ATTACHMENT COMPONENTS	
TURNBUCKLE	1/2" X 6" GALV J-J
SHACKLE	1/4" GALV
CABLE	3/16" GALV 7X19

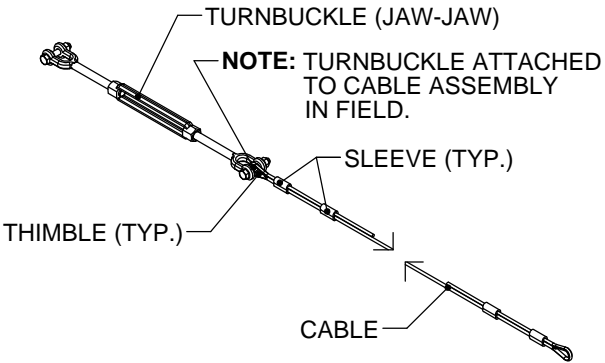
*REFER TO SHEET [C1] FOR BAY NUMBERING

SWAY CABLE ASSEMBLY SKU'S	
BAY NUMBER*	SWAY CABLE SKU
1 & 9	CAB18G0609
2, 3, 7 & 8	CAB18G0611
4 - 6	CAB18G0806

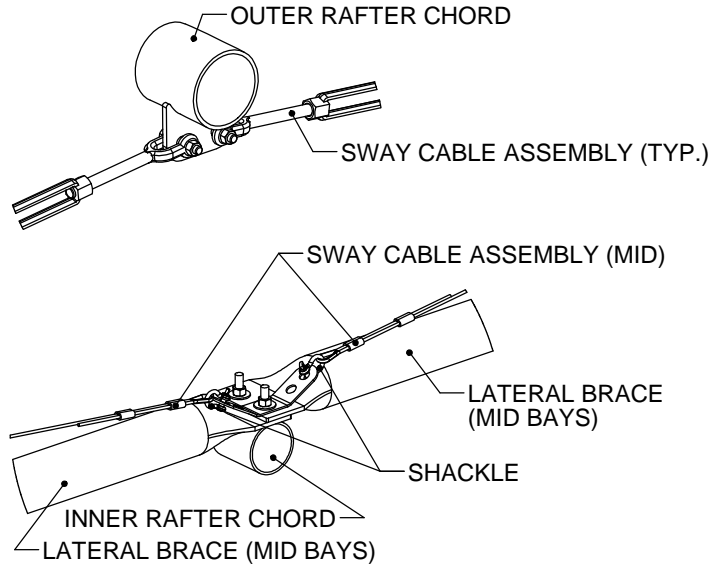
[G3] VIEW 4 - SWAY CABLE LOCATIONS



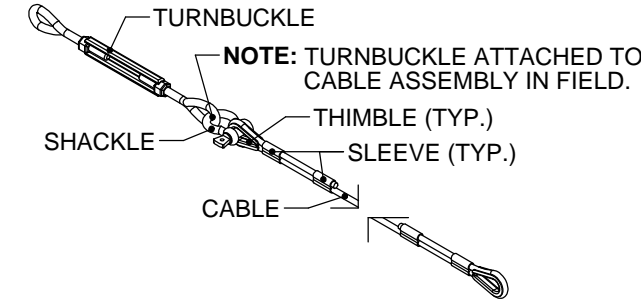
[G3] VIEW 5 - SWAY CABLE CONNECTION (END BAY)



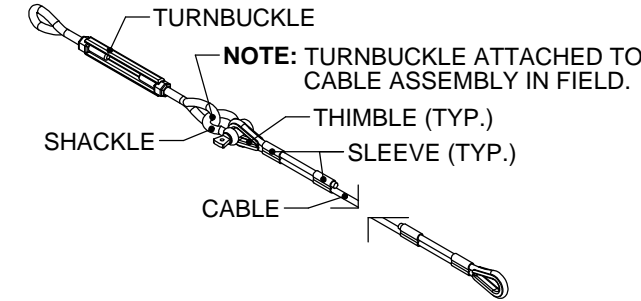
[G3] VIEW 7 - TYPICAL SWAY CABLE ASSEMBLY



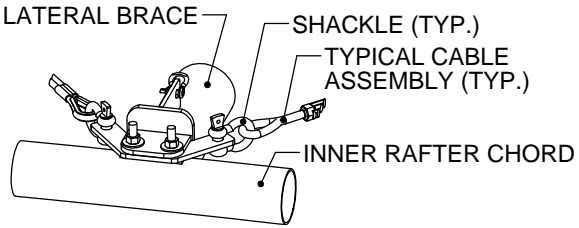
[G3] VIEW 6 - SWAY CABLE CONNECTION (MID BAY TO MID BAY)



[G3] VIEW 3 - TYPICAL CABLE ASSEMBLY



[G3] VIEW 2 - TYPICAL CABLE CONNECTION DETAIL



DEVELOPED BY


A DIVISION OF
ENGINEERING SERVICES & PRODUCTS CO.
1440 18TH AVENUE SW
DYERSVILLE, IA 52040
P: 563.875.6113
F: 563.875.2317
WWW.ESAPCO.COM

ORDER #:
7254927

CUSTOMER #:
6503439

STRUCTURE SKU #:
T100GBMF014080

STRUCTURE SIZE:
100' X 80'

STRUCTURE DESCRIPTION:
1

CUSTOMER INFORMATION:
CHRIS CRAFT BOATS
8161 15TH STE
SARASOTA, FL 34237-2709

CONTACT PHONE:
941-358-3751

CUSTOMER CONTACT:
MATT MCGINNIS

SHEET TITLE:
CABLE LAYOUT & DETAILS

DRAWING DETAILS

DRAWN BY:
SMN

CREATION DATE:
1/6/2017

REVISIONS:

NO. BY: REVISION DATE:

1

2

3

4

NOT TO SCALE SHEET SIZE: 11X17

SHEET:

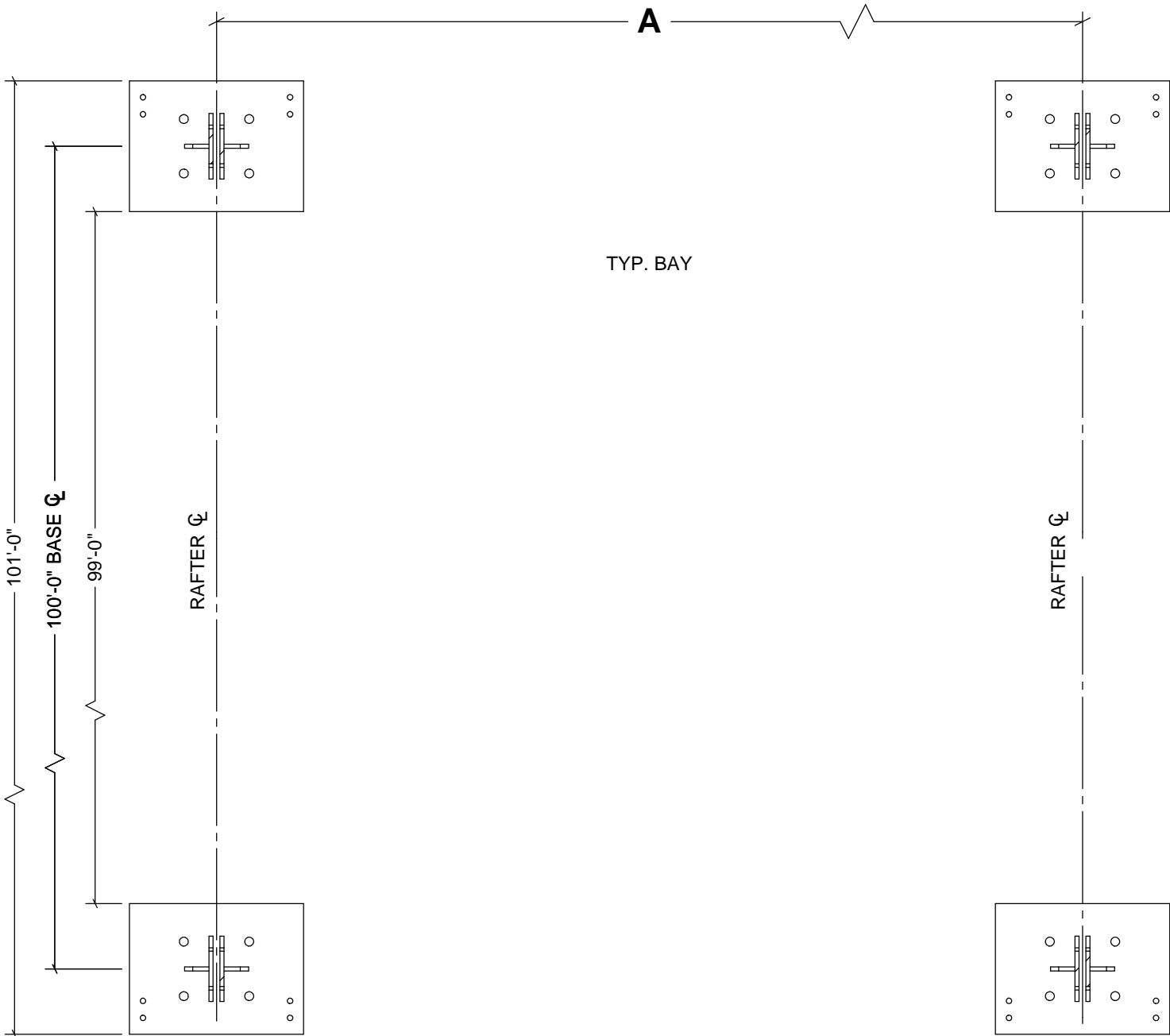
G3

*REFER TO SHEET [C1] FOR BAY NUMBERING

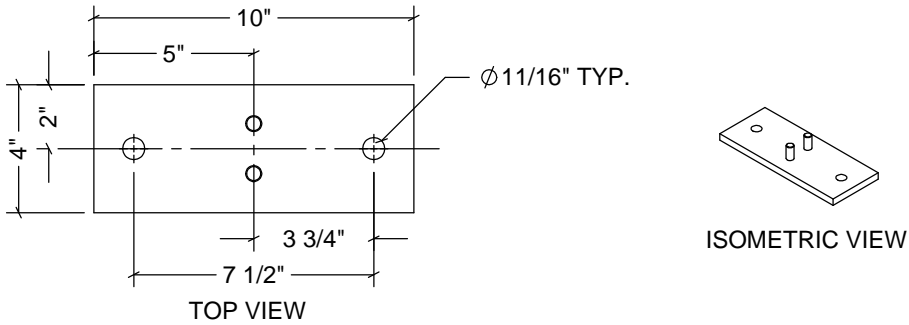
BAY NUMBER*	A (RAFTER SPACING)
1 - 3 and 7 - 9	8'-4"
4 - 6	10'-0"

**REFER TO SHEET [E1] FOR BASE LOCATIONS

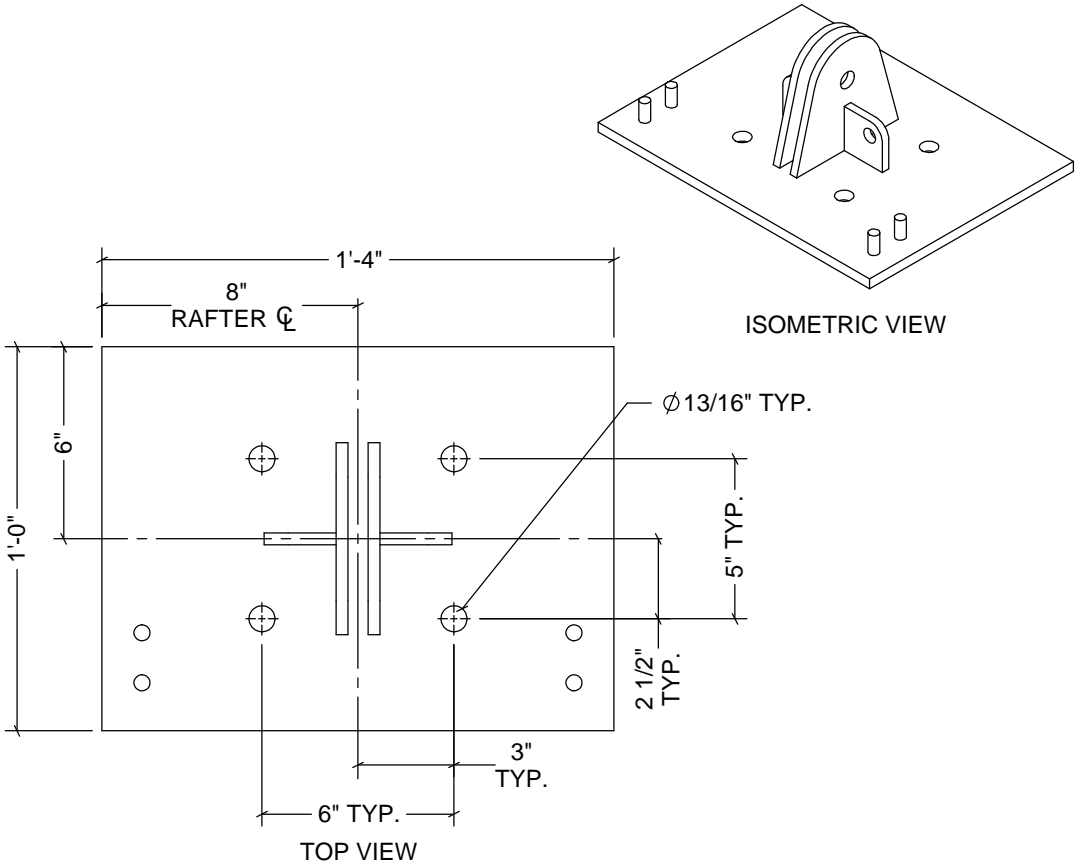
RAFTER TYPE	LEFT BASE SKU**	RIGHT BASE SKU**
END	BP061GBM	BP061GBM
MID	BP061GBM	BP061GBM



NOTE: REFER TO SHEET [F1] FOR WINCH PLATE LOCATIONS.



WP1004WS DETAILS (IF APPLICABLE)



BP061GBM DETAILS

DEVELOPED BY


A DIVISION OF
ENGINEERING SERVICES & PRODUCTS CO.
1440 18TH AVENUE SW
DYERSVILLE, IA 52040
P: 563.875.6113
F: 563.875.2317
WWW.ESAPCO.COM

ORDER #:
7254927

CUSTOMER #:
6503439

CUSTOMER INFORMATION: CHRIS CRAFT BOATS 8161 15TH STE SARASOTA, FL 34237-2709	STRUCTURE SKU #: T100GBMF014080
	STRUCTURE SIZE: 100' X 80'
CUSTOMER CONTACT: MATT MCGINNIS	CONTACT PHONE: 941-358-3751
SHEET TITLE: BASE PLATE LAYOUT & DETAILS	

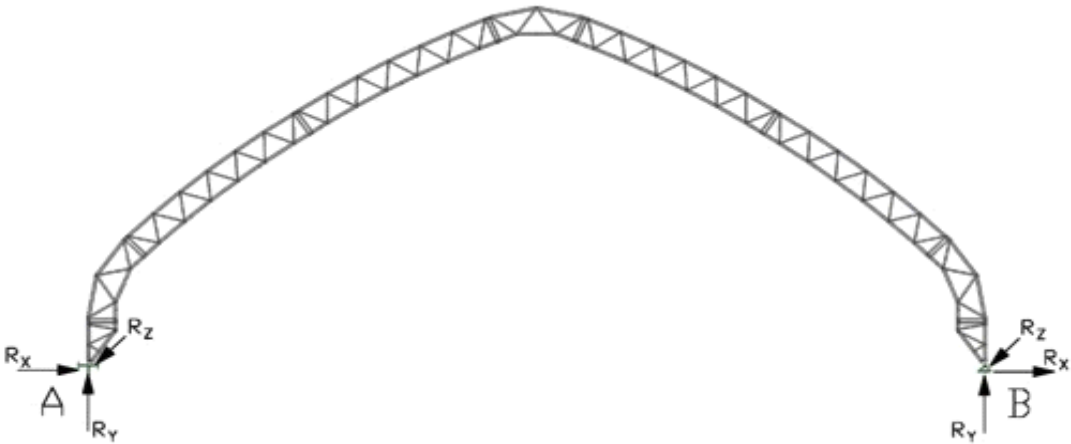
DRAWING DETAILS		
DRAWN BY: SMN	CREATION DATE: 1/6/2017	
REVISIONS:		
NO.	BY:	REVISION DATE:
1		
2		
3		
4		
NOT TO SCALE		SHEET SIZE: 11X17
SHEET:		
H1		

FOUNDATION NOTES:

- ESAPCO DOES NOT PROVIDE ANY MATERIAL OR DESIGN CRITERIA FOR THE CREATION OF THE FOUNDATION OR ANCHORING OF THIS BUILDING, UNLESS OTHERWISE NOTED.
- FOUNDATION AND ANCHORING SHALL BE ENGINEERED AND APPROVED BY A LICENSED STRUCTURAL ENGINEER OF OWNER'S CHOICE.
- FOUNDATION MUST MEET THE BUILDING REACTION DATA SHOWN BELOW.
- SEE ENDWALL DRAWINGS FOR ENDWALL REACTIONS (IF APPLICABLE).

*See notes below		UNFACTORED BASE REACTIONS TO CONSIDER AT TYPICAL BASES			
Load Case		Side A		Side B	
		Rx (kip)	Ry (kip)	Rx (kip)	Ry (kip)
Dead Load, Self Weight	DL	0.67	1.48	-0.67	1.48
Dead Load, Collateral	EL	0.31	0.50	-0.31	0.50
Snow Load, Balanced	S	0.00	0.00	0.00	0.00
Snow Load, Unbalanced	Su	0.00	0.00	0.00	0.00
Wind Load	Wx	-10.25	-5.20	-5.38	-7.08
Wind Load	Wz2	-8.40	2.05	-7.23	0.18
Wind Load	Wz	-4.66	-23.33	7.92	-21.86
Wind Load	Wz2	-2.43	-14.64	5.69	-13.16
Roof Live Load	Lr	1.48	2.50	-1.48	2.50
0	0	0.00	0.00	0.00	0.00

*See notes below		ADDITIONAL UNFACTORED BASE REACTIONS TO CONSIDER AT BASES WITH CABLE ATTACHED					
Load Case		Side A			Side B		
		Rx (kip)	Ry (kip)	Rz (kip)	Rx (kip)	Ry (kip)	Rz (kip)
Wind Load	Wz	-3.52	-21.94	3.49	5.92	-19.54	3.23
Dead Load, Cable (Wz)	DL	0.02	0.09		-0.02	0.09	
Wind Load	Wz2	5.03	11.08	0.18	-3.71	10.27	0.11
Dead Load, Cable (Wz2)	DL	0.04	0.10		-0.04	0.10	



CONTROLLING ASD COMBINATIONS TO CONSIDER AT TYPICAL BASES			
Max Gravity (kip)	4.77	DL + EL + 0.75Lr + 0.45Wx2	
Max Uplift (kip)	-13.11	0.6DL + 0.6Wz	
Max Inward Lateral (kip)	-5.75	0.6DL + 0.6Wx	
Max Outward Lateral (kip)	-5.34	DL + EL + 0.75Lr + 0.45Wx2	

ADDITIONAL CONTROLLING ASD COMBINATIONS TO CONSIDER AT BASES WITH CABLE ATTACHED			
Max Gravity (kip)	8.73	DL + EL + 0.6Wz2	
Max Uplift (kip)	-12.23	0.6DL + 0.6Wz	
Max Inward Lateral (kip)	-5.74	0.6DL + 0.6Wx	
Max Outward Lateral (kip)	-5.36	DL + EL + 0.75Lr + 0.45Wx2	

Notes:

- The above Reaction Data should be combined as required by the Load Combinations from IBC or other applicable code.
- The Reaction Data is for a building that represents a low hazard to human life in the event of a failure. Examples of such are agricultural buildings, unoccupied private buildings, unoccupied storage buildings, or temporary buildings. A building is considered "unoccupied" when employees are typically in the building only to move materials in and out (no permanent workstations) and it is not open to the public.
- The Reaction Data is for a building that has both endwalls closed or has the same area of openings in each endwall.

DEVELOPED BY



A DIVISION OF
ENGINEERING SERVICES & PRODUCTS CO.
1440 18TH AVENUE SW
DYERSVILLE, IA 52040
P: 563.875.6113
F: 563.875.2317
WWW.ESAPCO.COM

ORDER #:
7254927

CUSTOMER #:
6503439

STRUCTURE SKU #:
T100GBMF014080

STRUCTURE SIZE:
100' X 80'

STRUCTURE DESCRIPTION:
1

CUSTOMER INFORMATION:
CHRIS CRAFT BOATS
8161 15TH STE
SARASOTA, FL 34232-7709

CONTACT PHONE:
941-358-3751

CUSTOMER CONTACT:
MATT MCGINNIS

SHEET TITLE:
BUILDING REACTION DATA

DRAWING DETAILS

DRAWN BY:
SMN

CREATION DATE:
1/6/2017

REVISIONS:

NO. BY: REVISION DATE:

1

2

3

4

NOT TO SCALE

SHEET SIZE: 11X17

SHEET:

J1