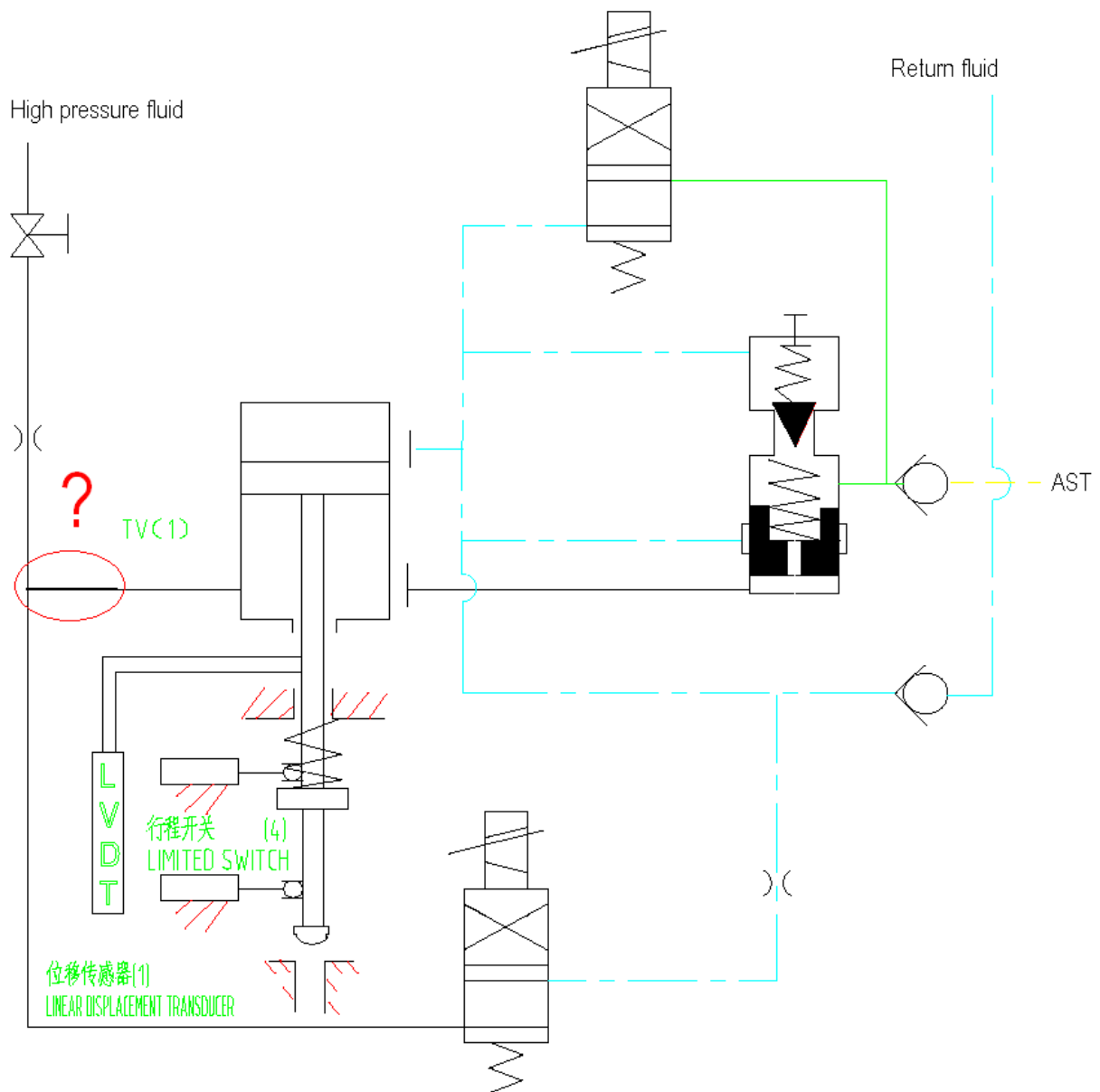
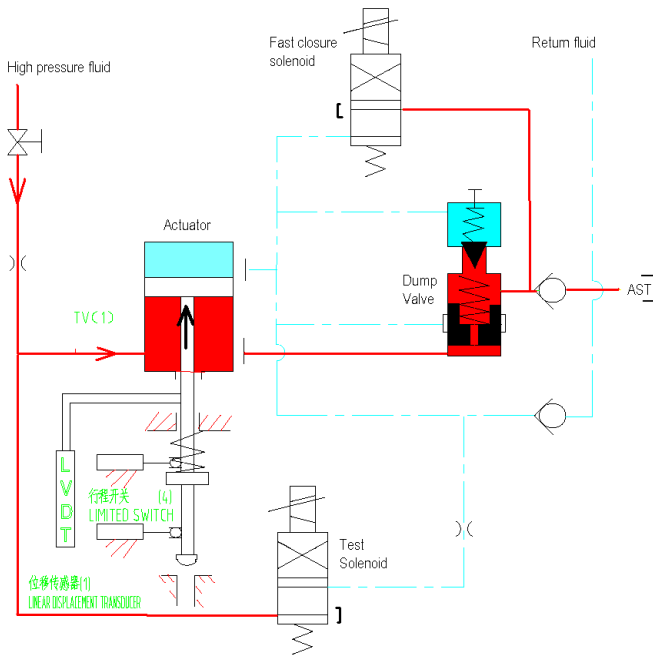


Is the control diagram missing the connection circled in red?



If as shown above;

High pressure fluid, through the isolation valve and orifice is admitted into the actuator. With the unit reset, the AST header blocks the flow of high pressure fluid and pressure builds in the actuator to open the TV.



The de energized test solenoid blocks high pressure. When energized, the solenoid drains the orifice supplied high pressure fluid that was being admitted into the actuator. The pressure drop determined by the orifices and the actuator spring cause the TV to close.

