

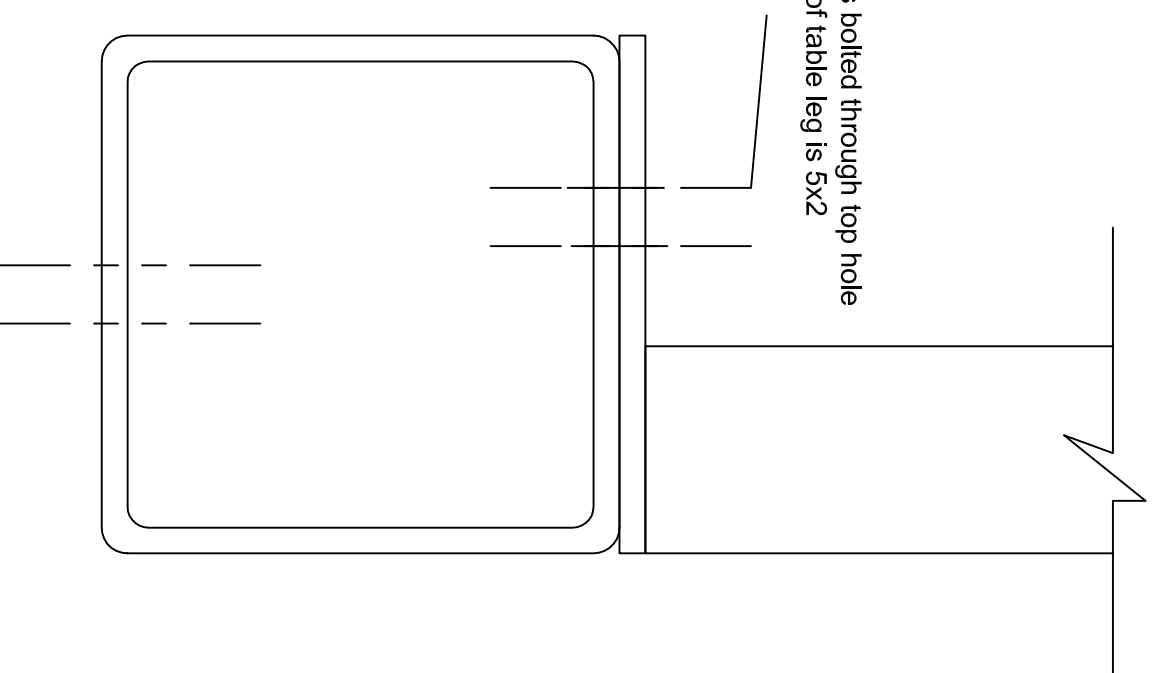
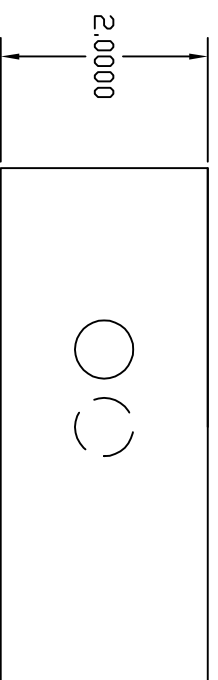
5x5x $\frac{1}{4}$  HSS Tube

$\frac{9}{16}$ " hole

$\frac{9}{16}$ " hole

Leg of table is bolted through top hole  
in tube. Foot of table leg is 5x2

Table leg is 2x2 tube



4 legs with risers per table. Approx.  
weight of table & parts - 2500lbs.  
Table dim is 66" x 46"