

① Pin-Pin Between Panel Points

$$P = 20.7 \text{ K}$$
$$M = 0.7 \text{ K-ft}$$

② Continuous over Panel Points
Modeled as (1) member continuous

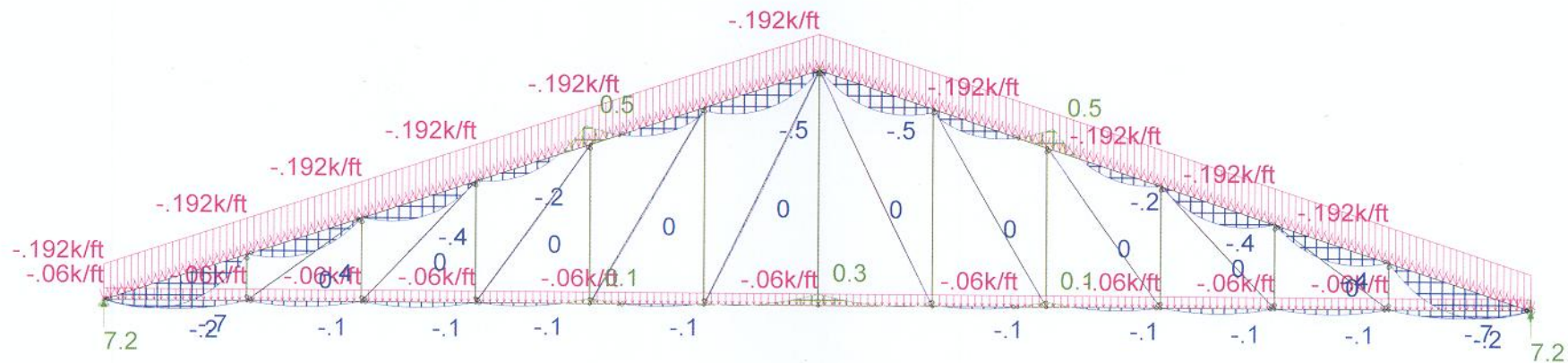
$$P = 18.4 \text{ K}$$
$$M = 2.5 \text{ K-ft}$$

③ Continuous over Panel Point
Modeled as individual members Fixed @ Panel Points

$$P = 18.4$$
$$M = -3.3 \text{ K-ft}$$

$$P_{i,n} - P_{i,n}$$

Top chord: $m = -0.7 \text{ kft}$



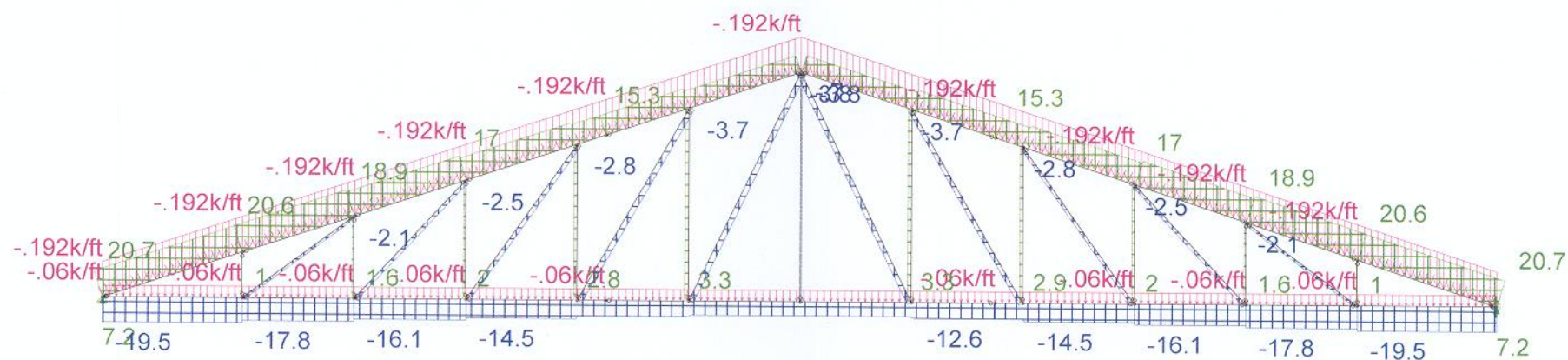
Bot Chord A = -0.2 K-ft

Loads: LC 2, ASCE 3 (a)
Results for LC 2, ASCE 3 (a)
Member z Bending Moments (k-ft)
Y-direction Reaction units are k and k-ft

		SK - 2
RSF		Jan 10, 2011 at 10:36 AM
		Truss 2 - pinned chords.r3d



①

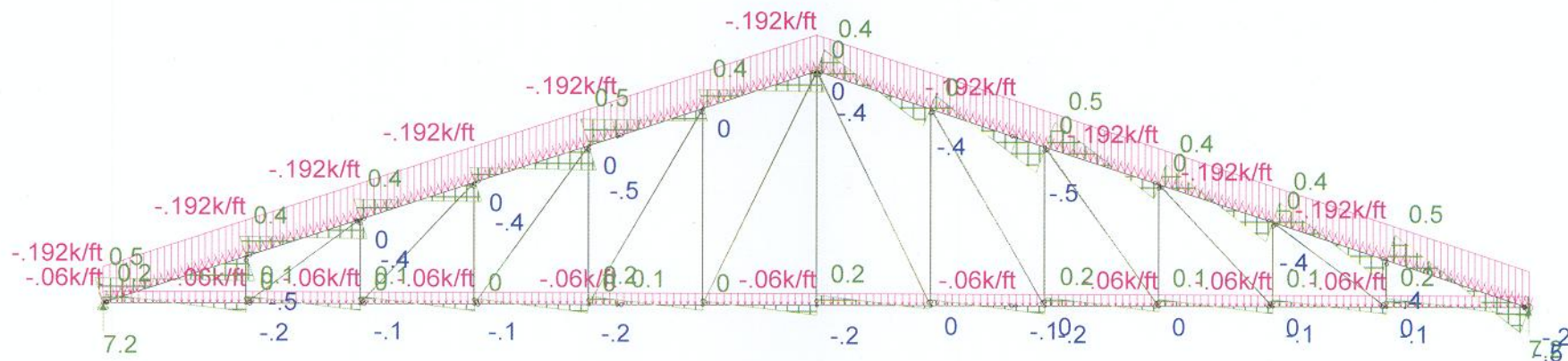


Loads: LC 2, ASCE 3 (a)
Results for LC 2, ASCE 3 (a)
Member Axial Forces (k)
Y-direction Reaction units are k and k-ft

RSF		SK - 1
		Jan 10, 2011 at 10:34 AM
		Truss 2 - pinned chords.r3d



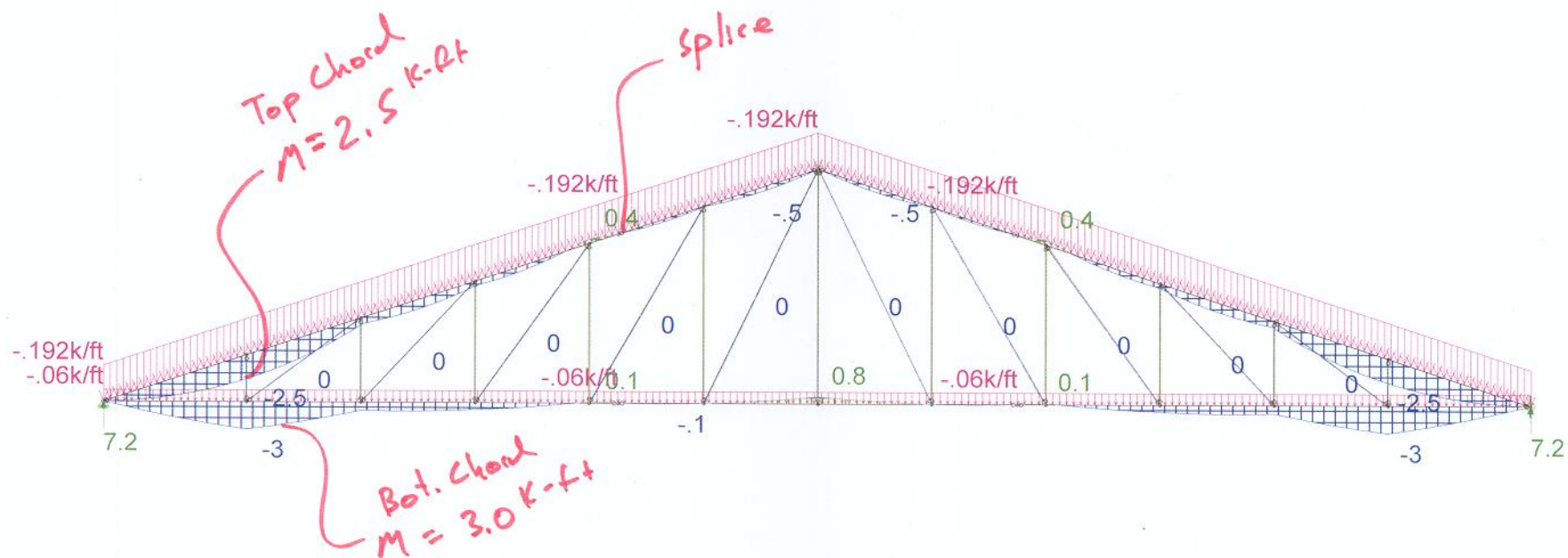
①



Loads: LC 2, ASCE 3 (a)
Results for LC 2, ASCE 3 (a)
Member y Shear Forces (k)
Y-direction Reaction units are k and k-ft

		SK - 4
RSF		Jan 10, 2011 at 10:37 AM
		Truss 2 - pinned chords.r3d

(2)

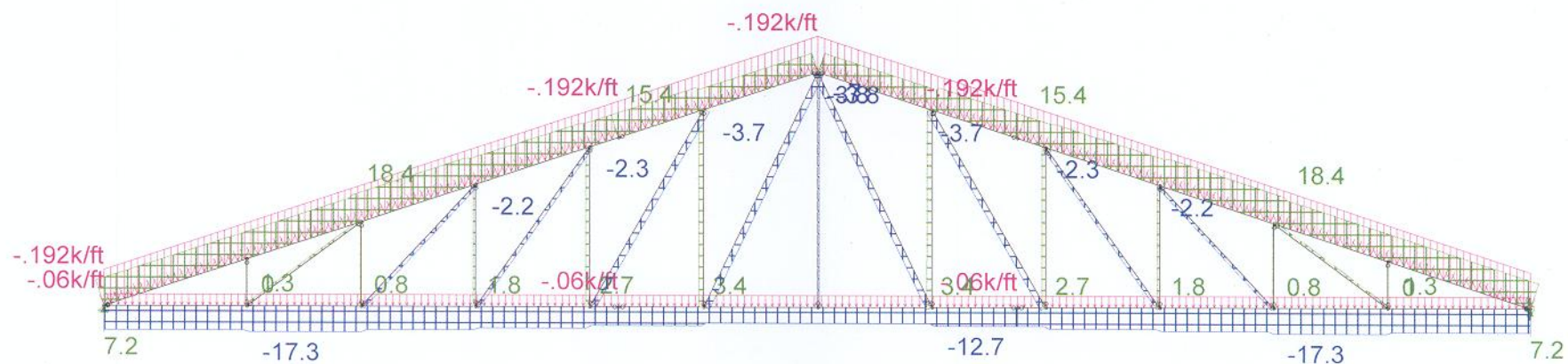


Loads: LC 2, ASCE 3 (a)
Results for LC 2, ASCE 3 (a)
Member z Bending Moments (k-ft)
Y-direction Reaction units are k and k-ft

		SK - 3
RSF		Jan 10, 2011 at 10:40 AM
		Truss 2 - spliced chords.r3d

(2)

Top Chord Continuous w/splice

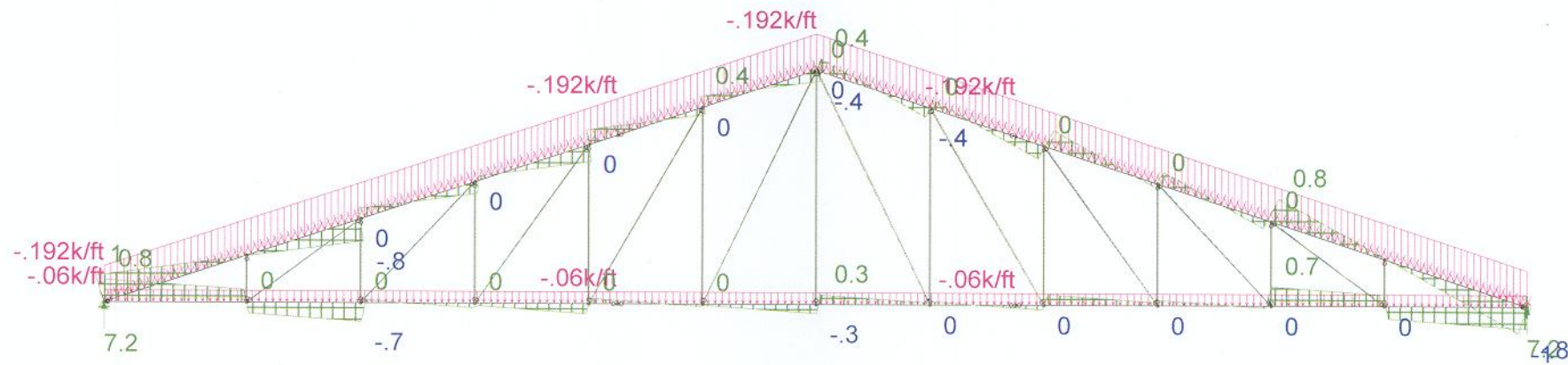


Loads: LC 2, ASCE 3 (a)
Results for LC 2, ASCE 3 (a)
Member Axial Forces (k)
Y-direction Reaction units are k and k-ft

		SK - 1
RSF		Jan 10, 2011 at 10:38 AM
		Truss 2 - spliced chords.r3d



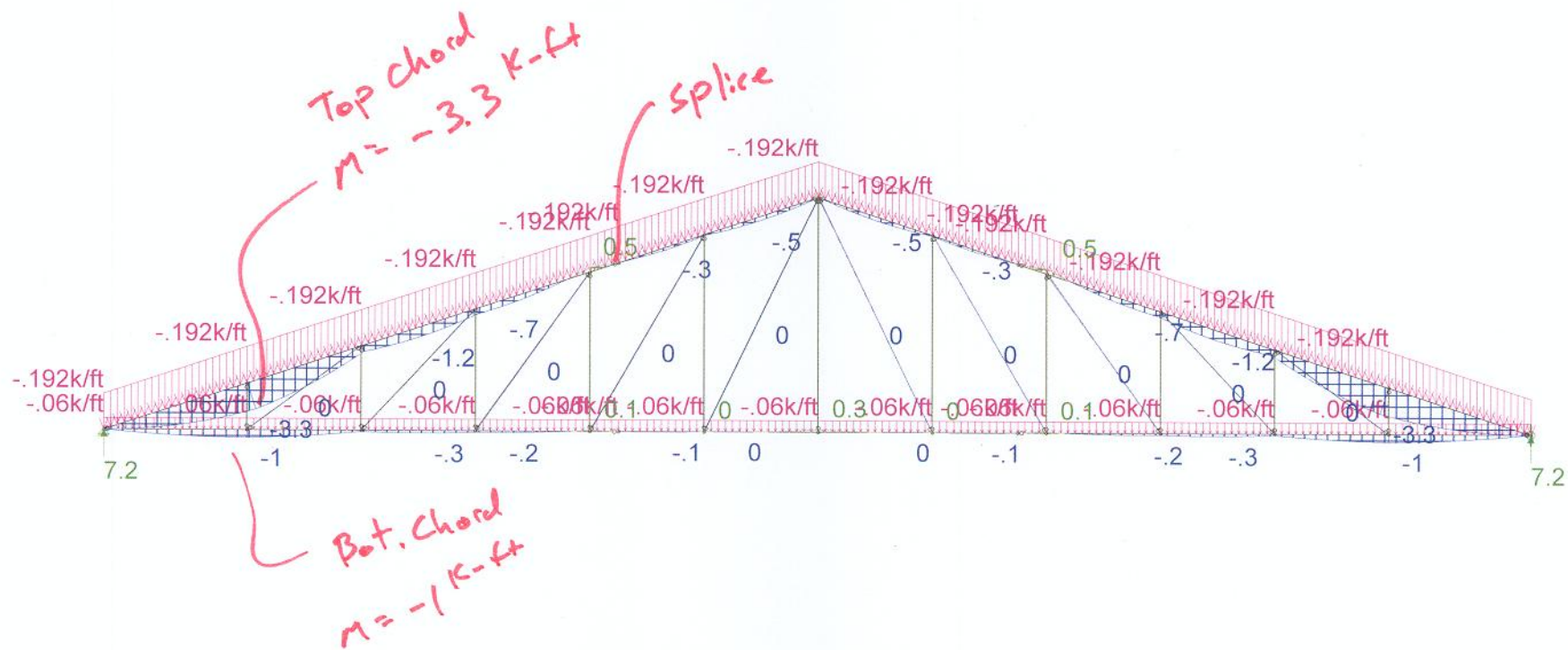
2



Loads: LC 2, ASCE 3 (a)
Results for LC 2, ASCE 3 (a)
Member y Shear Forces (k)
Y-direction Reaction units are k and k-ft

		SK - 2
RSF		Jan 10, 2011 at 10:40 AM
		Truss 2 - spliced chords.r3d

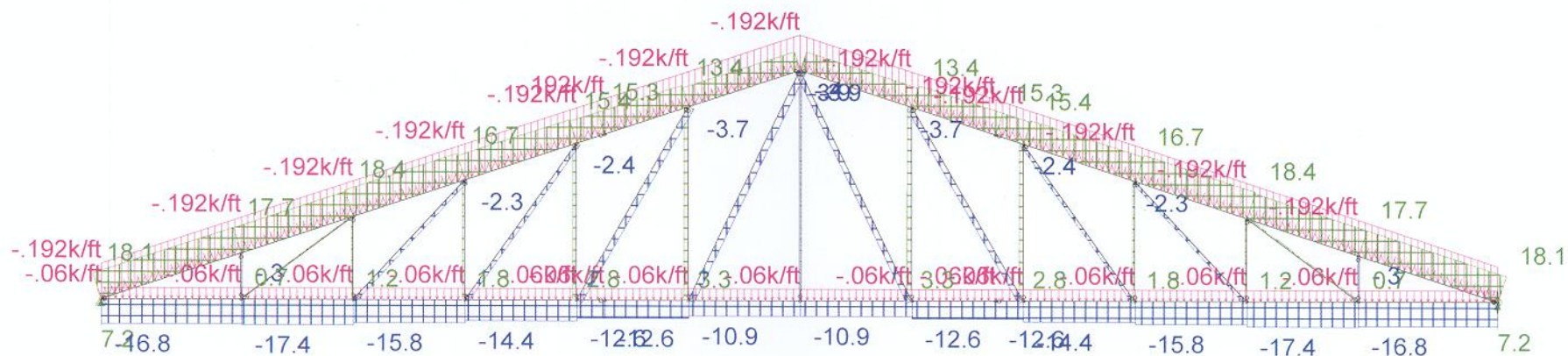
Top chord Fixed ends @ Panel Point
(continuous)



Loads: LC 2, ASCE 3 (a)
Results for LC 2, ASCE 3 (a)
Member z Bending Moments (k-ft)
Y-direction Reaction units are k and k-ft

		SK - 4
RSF		Jan 10, 2011 at 10:32 AM
		Truss 2 - Fixed with Splice.r3d

3

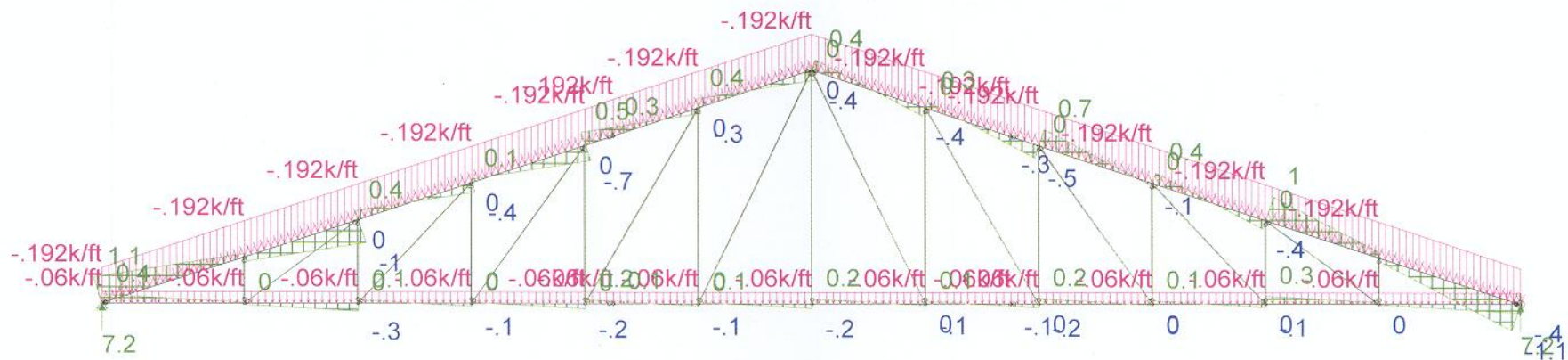


Loads: LC 2, ASCE 3 (a)
 Results for LC 2, ASCE 3 (a)
 Member Axial Forces (k)
 Y-direction Reaction units are k and k-ft

RSF	SK - 5	
	Jan 10, 2011 at 10:33 AM	
	Truss 2 - Fixed with Splice.r3d	



3



Loads: LC 2, ASCE 3 (a)
Results for LC 2, ASCE 3 (a)
Member y Shear Forces (k)
Y-direction Reaction units are k and k-ft

		SK - 6
RSF		Jan 10, 2011 at 10:33 AM
		Truss 2 - Fixed with Splice.r3d