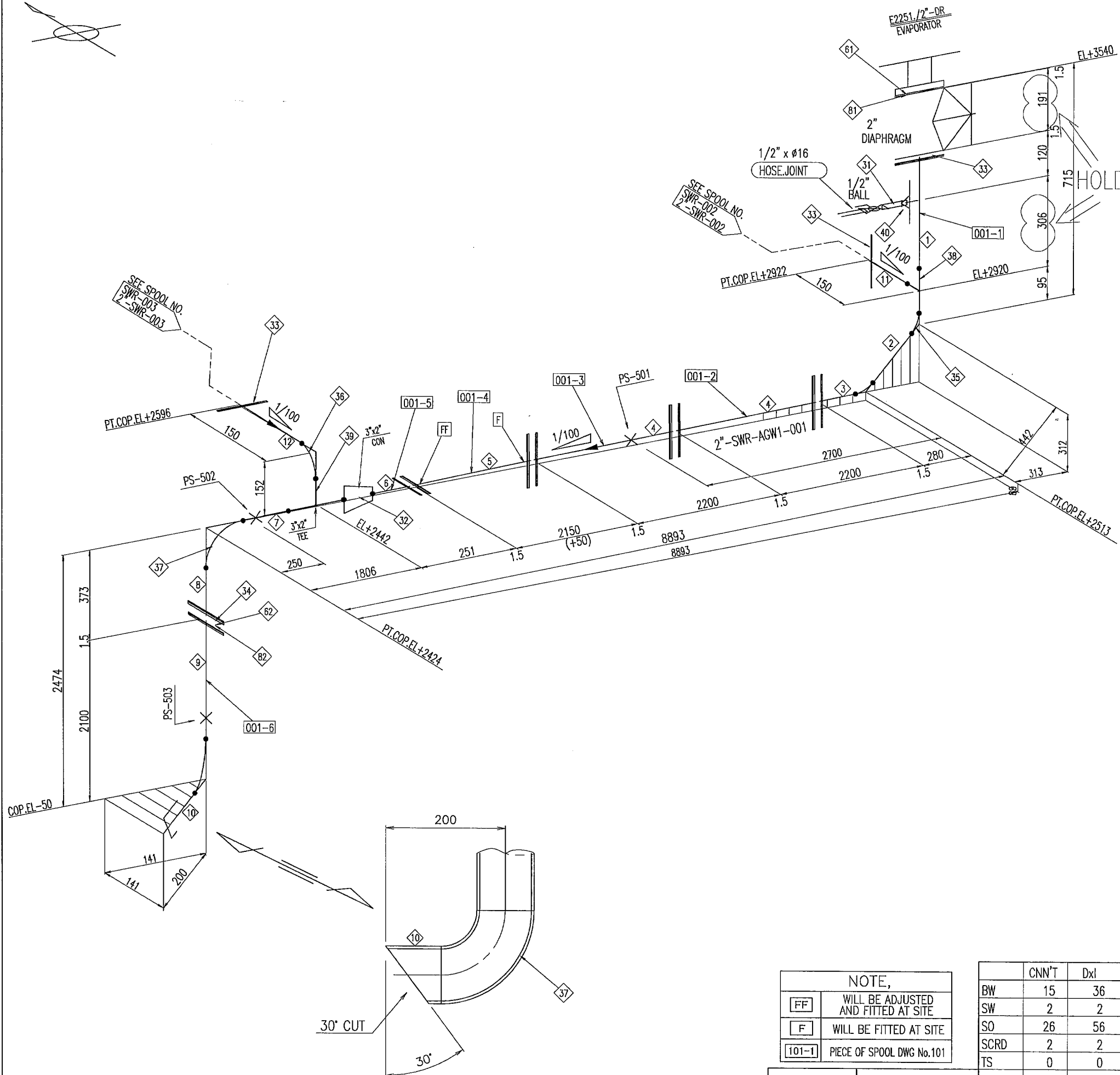


C.N



NOTE,	
FF	WILL BE ADJUSTED AND FITTED AT SITE
F	WILL BE FITTED AT SITE
101-1	PIECE OF SPOOL DWG No.101

DEGN. TEMP	80 °C
DEGN. PRS.	ATMOS. Bar G
HYDR. TEST	0.4-0.5 Bar G
PNEUMATIC TEST	0.4-0.5 Bar G

CNN'T	DxI
BW	15 36
SW	2 2
SO	26 56
SCRD	2 2
TS	0 0

NO.	N A M E	SIZE	TYPE
40	THREDOLET	2"x NPT1/2"	3000# SCR-R
39	TEE	3"x 2"	SCH40S BW
38	TEE	2"x 2"	SCH40S BW
37	90 ELBOW	3"	SCH40S BW
36	90 ELBOW	2"	SCH40S BW
35	45 ELBOW	2"	SCH40S BW
34	FLANGE	3"	150# SO RF
33	FLANGE	2"	150# SO RF
32	CON.REDUCER	3"x 2"	SCH40S BW
31	P.NIPPLE-A	1/2"	BOTH SCRCD

CUSTOMER	
SALAH METHANOL COMPANY,LLC (FZC) Salalah, Sultanate of Oman	
NAME	
SASAKURA ENG. CO.<D. EVAPORATOR BOTTOM DRAIN BRINE (1/3) 2"-SWR-AGW1-001	
SCALE	JOB
NONE	Modification
DWG NO.	REV
SWR - 001	0

NO.	N A M E	SIZE	TYPE	MATERIAL	STANDARD	QTY	REMARKS
DIAPHRAGM	2"	150# RF		316 SS	VENDOR STD	1	
BALL	1/2"	SCRD		316 SS	VENDOR STD	1	
HOSE JOINT	1/2" x Ø16	SCRD		STAINLESS STEEL	VENDOR STD	1	WITH HOSE BAND
61 BOLT&NUT	UNC 5/8 90mm C	REGULA STUD		A193-B7/A194-2H	2"	24	H.D.Galv.
62 BOLT&NUT	UNC 5/8 100mm C	REGULA STUD		A193-B7/A194-2H	3"	4	H.D.Galv.
81 GASKET	2"	1.5mm 150#		Non Asbestos	ASMEB16.21	6	RF
82 GASKET	3"	1.5mm 150#		Non Asbestos	ASMEB16.21	1	RF
1 PIPE	2"	357mm	SCH40S BE-PE	A312 TP316L	B36.19M	1	(SMLS)
2 PIPE	2"	378mm	SCH40S BE	A312 TP316L	B36.19M	1	(SMLS)
3 PIPE	2"	243mm	SCH40S BE-PE	A312 TP316L	B36.19M	1	(SMLS)
4 PIPE	2"	2190mm	SCH40S PE	A312 TP316L	B36.19M	2	(SMLS)
5 F.F.PIPE	2"	2190mm	SCH40S PE-LS	A312 TP316L	B36.19M	1	(SMLS)
6 PIPE	2"	70mm	SCH40S BE-PE	A312 TP316L	B36.19M	1	(SMLS)
7 PIPE	3"	1605mm	SCH40S BE	A312 TP316L	B36.19M	1	(SMLS)
8 PIPE	3"	252mm	SCH40S BE-PE	A312 TP316L	B36.19M	1	(SMLS)
9 PIPE	3"	1979mm	SCH40S BE-PE	A312 TP316L	B36.19M	1	(SMLS)
10 PIPE	3"	85mm	SCH40S 30'-BE	A312 TP316L	B36.19M	1	(SMLS)
11 PIPE	2"	81mm	SCH40S BE-PE	A312 TP316L	B36.19M	1	(SMLS)
12 PIPE	2"	68mm	SCH40S BE-PE	A312 TP316L	B36.19M	1	(SMLS)
TOTAL PIPE	2"	7.9m	SCH40S	A312 TP316L	B36.19M	1	(SMLS)
TOTAL PIPE	3"	4.0m	SCH40S	A312 TP316L	B36.19M	1	(SMLS)