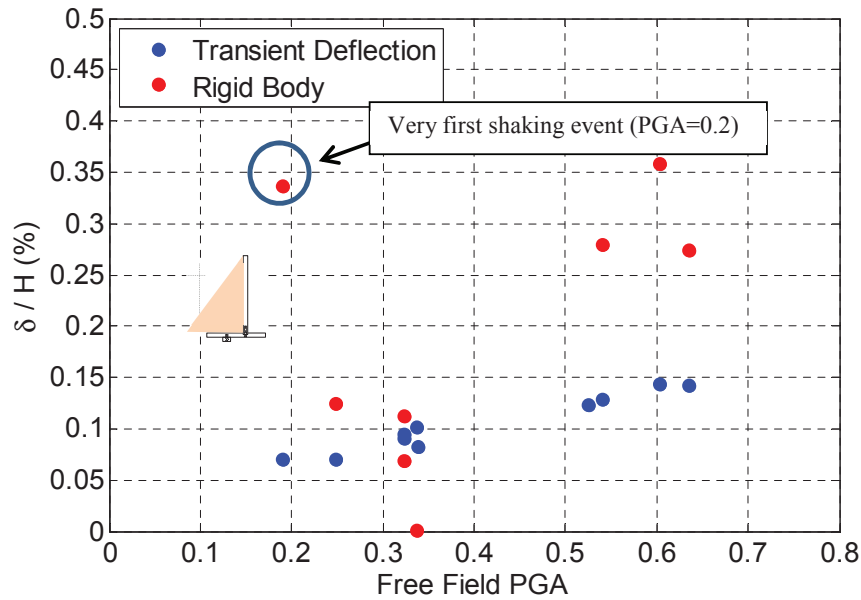


**Figure 6.13.** Effect of wall movement on earth pressure.

Figures 6.14 and 6.15 show the rigid body translation and transient deflection of the both non-displacing cantilever and displacing retaining walls derived from LVDT and strain gage measurements in the experiments.



**Figure 6.14.** Transient deflection and rigid body translation of displacing cantilever wall.