

WALWORTH CAST STEEL SWING CHECK VALVES CLASS 300

CAST STEEL SWING CHECK VALVES

DESIGN FEATURES

- Swing check valves design in accordance with API-6D & ASME B16.34.
- Swing check valves option in accordance with API-603 only for stainless steel & Nickel alloys.
- Swing check valves for cryogenic service in accordance with BS-6364.
- Flange dimensions in accordance with ASME B16.5 for valves up to 24" nominal diameter.
- Damper & Counter weight options.
- Drain connections as per Customer request.
- Low fugitive emissions control.
- NACE service either MR-01-75 or MR-01-03.
- Test in accordance with API-598.

① Body to Cover Joint designed to apply a uniform load to the gasket to assure a leak proof seal.

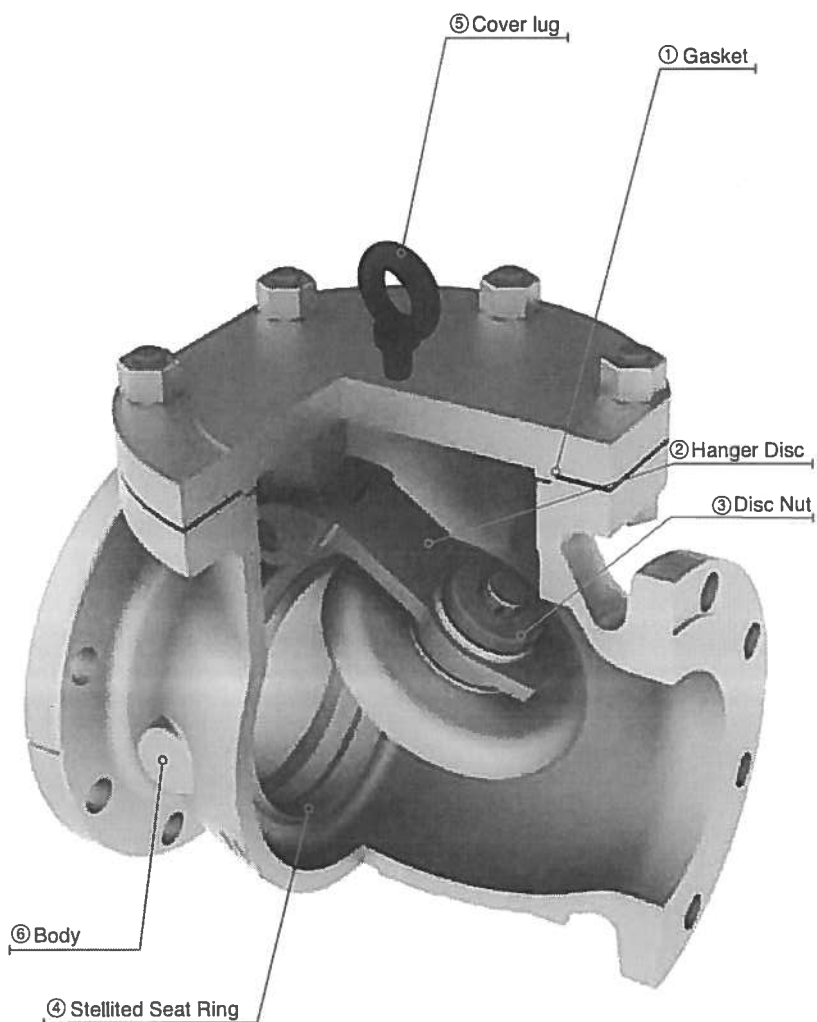
② Disc to Hanger connection allows the disc a controlled movement independent of the hanger to assure proper disc alignment with the seat at closure.

③ The connection is secured by a welded disc nut to prevent disassembly due to vibration and closure impact.

④ Stellite Seat Ring provides increased resistance to wear abrasion and erosion of the sealing surface.

⑤ From 8" and up, WALWORTH check valves have coverlug for easy installation

⑥ Body with heavy wall thickness as per ASME B16.34 for maximum service life. Provided with bosses for optional drains.



WALWORTH CAST STEEL SWING CHECK VALVES CLASS 300

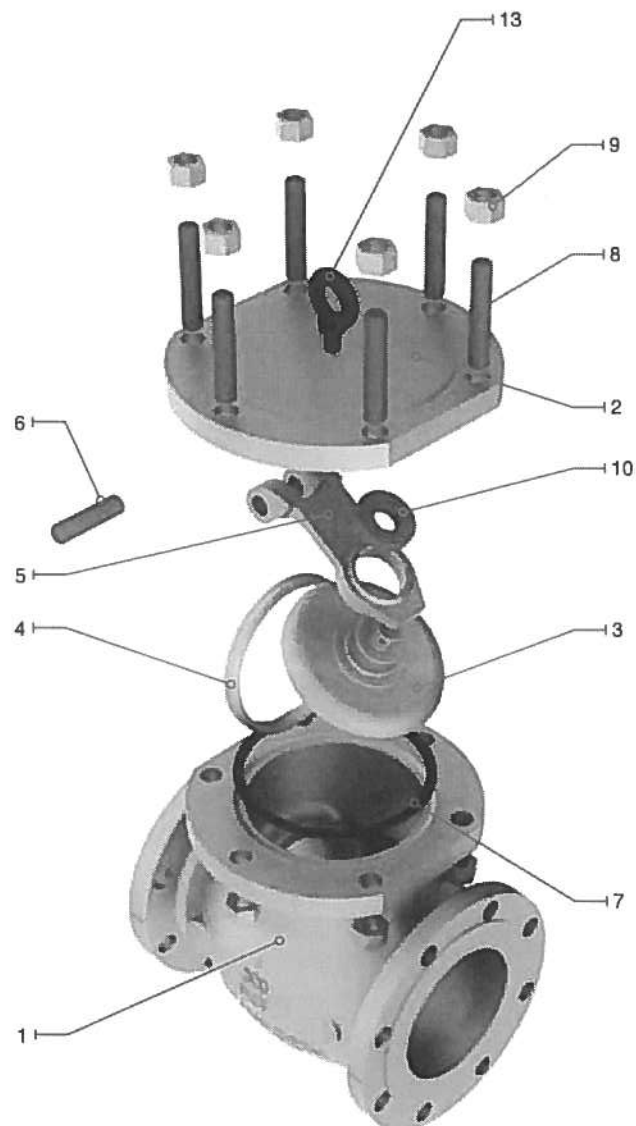
- Design in accordance with API-6D & ASME B16.34
- Flange dimensions as per ASME B16.5
- End to end dimensions as per ASME B16.10
- WE dimensions as per ASME B 16.25
- Flange dimensions larger than 24" according to ASME B16.47 Series A as standard
- Flange dimensions as per ASME B16.47 Series B available upon request

Catalog Figure No.	ID Plant Figure No.	Type of Ends
5344RF	5344F	Flanged Raised Face
5344RTJ	5344RJ	Flanged Ring Type Joint
5344WE	5344WE	Buttweld

Regular Bill of Materials

No.	DESCRIPTION	STANDARD MATERIAL
1	Body	ASTM A 216 GR WCB
2	Cover	ASTM A 216 GR WCB
3	Disc	ASTM A 216 GR WCB + 13% Cr.
4	Seat Ring	ASTM A 515 GR 70 + ST 6
5	Hanger	ASTM A 216 GR WCB
6	Hanger Pin	ASTM A 276 Type 410
7	Cover Gasket	Spiral Stainless 304/Graphite
8	Cover Stud	ASTM A 193 GR B7
9	Cover Stud Nut	ASTM A 194 GR 2H
10	Disc Nut	Alloy Steel
*11	Body Plug	Alloy Steel
*12	Identification Plate	Stainless Steel
**13	Cover lug	Commercial Steel

*Not Shown ** Only from 8" an up

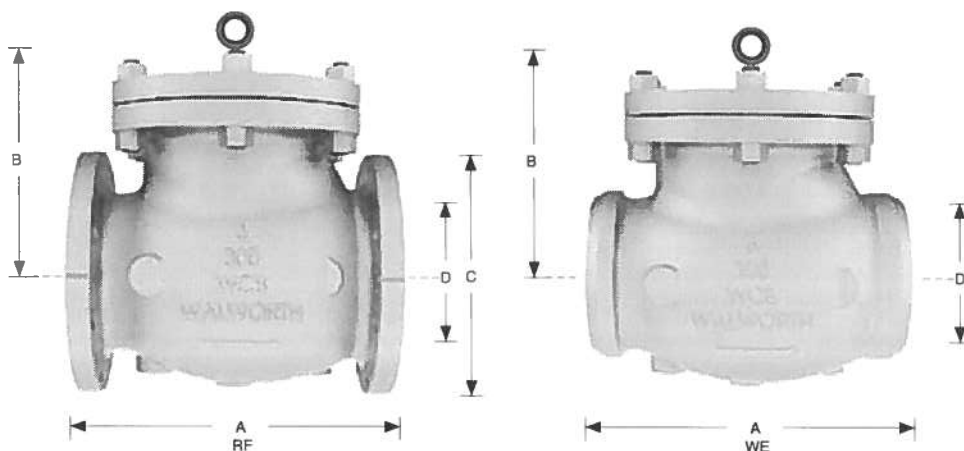


WALWORTH CAST STEEL SWING CHECK VALVES CLASS 300



- Design in accordance with API-6D & ASME B16.34
- Flange dimensions as per ASME B16.5
- End to end dimensions as per ASME B16.10
- WE dimensions as per ASME B 16.25
- Flange dimensions larger than 24" according to ASME B16.47 Series A as standard
- Flange dimensions as per ASME B16.47 Series B available upon request

Catalog Figure No.	ID Plant Figure No.	Type of Ends
5344RF	5344F	Flanged Raised Face
5344RTJ	5344RJ	Flanged Ring Type Joint
5344WE	5344WE	Buttweld



Dimensions and Weights

D																
Nominal	mm.	51	64	76	102	152	203	254	305	356	406	457	508	610	762	914
Diameter	Inch	2	2 1/2	3	4	6	8	10	12	14	16	18	20	24	30	36
A	mm.	267	292	318	356	445	533	622	711	838	864	978	1016	1346	1594	2083
	inch	10 1/2	11 1/2	12 1/2	14	17 1/2	21	24 1/2	28	33	34	38 1/2	40	53	62 3/4	82
B	mm.	144	179	184	221	260	348	395	456	495	630	680	710	787	1029	1219
	inch	5 11/16	7 1/16	7 1/4	8 11/16	10 1/4	13 11/16	15 9/16	17 15/16	19 1/2	24 13/16	26 3/4	27 15/16	31	40 1/2	48
C	mm.	165	191	210	254	318	381	445	521	584	648	711	775	914	1092	1270
	inch	6 1/2	7 1/2	8 1/4	10	12 1/2	15	17 1/2	20 1/2	23	25 1/2	28	30 1/2	36	43	50
Weight	kg.	22	27	42	63	129	235	358	544	577	768	990	1136	2180	3000	5400
5344RF	lb.	48	59	92	139	284	517	788	1197	1269	1690	2178	2499	4796	6600	11880
Weight	kg.	19	25	31	58	95	159	305	470	531	707	911	1045	2006	2760	4968
5344WE	lb.	41.8	54.648	68.2	127.6	209	349.8	671	1034	1168	1554	2004	2299	4412	6072	10930