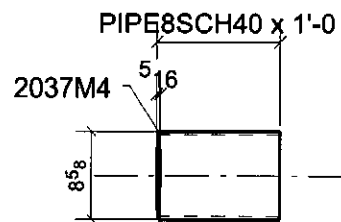
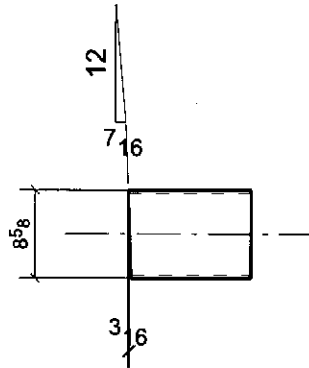


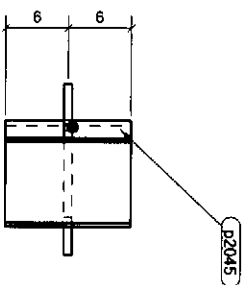


Are you familiar with pre-compressed fill material?

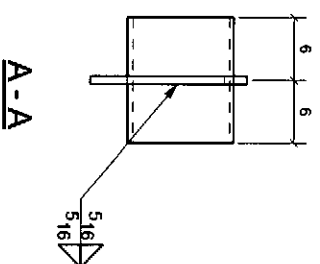
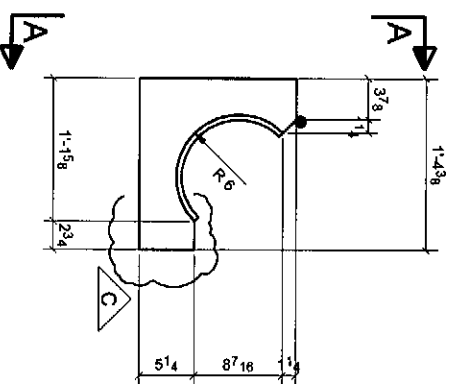


See Section 10 previous page,
How does Koralath attach to sleeve?

2 - PIPES - 2037M4

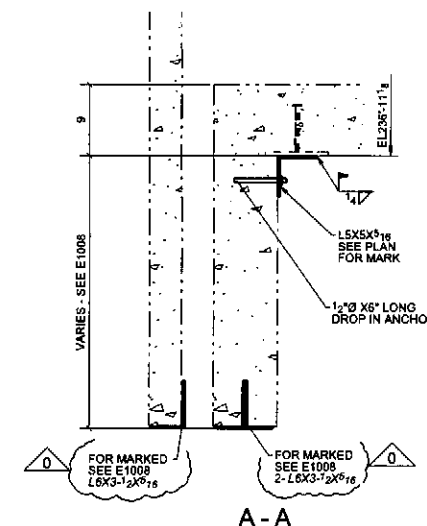
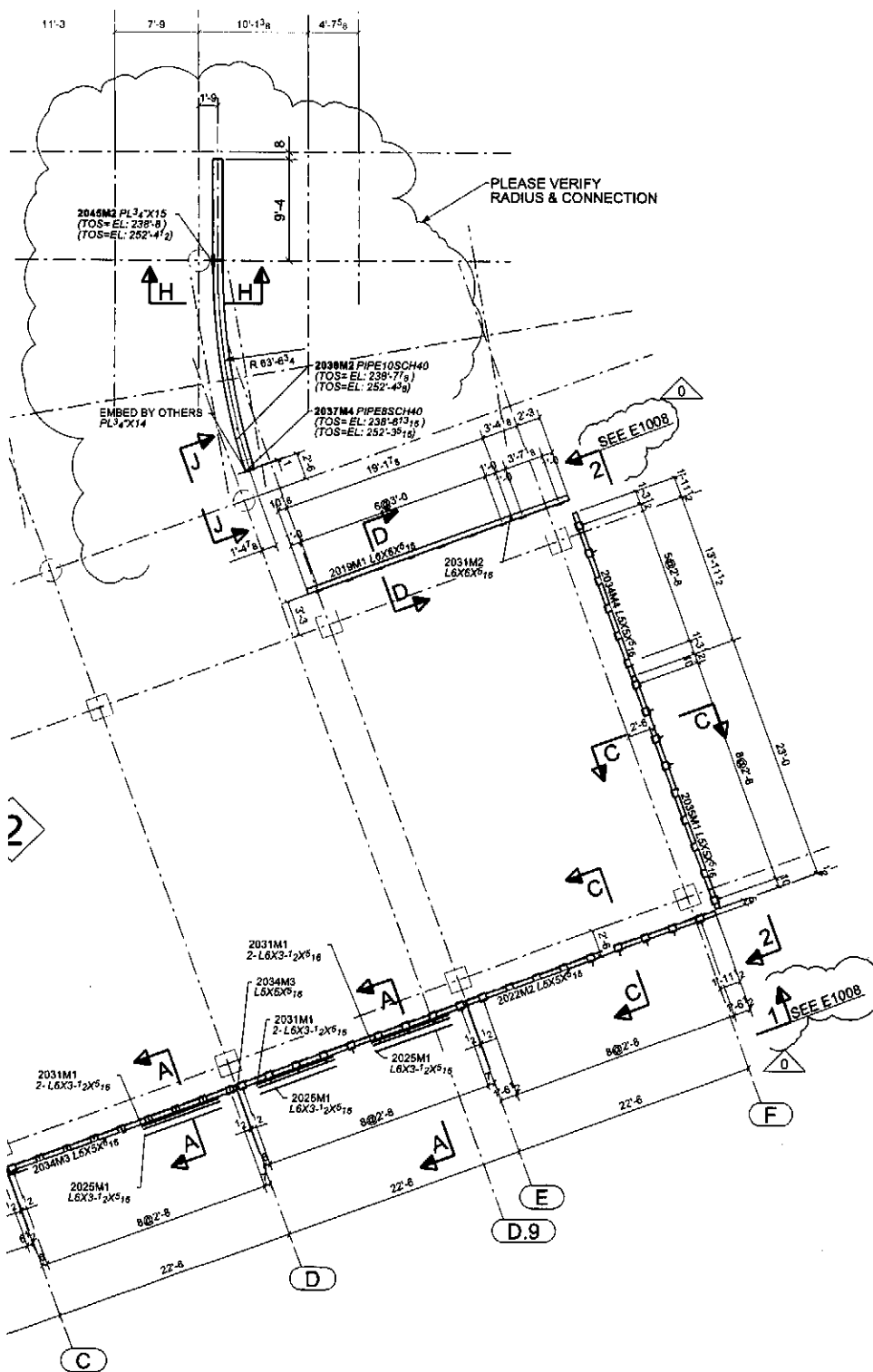


Inside radius to have korallath pad ~~in~~ on boat support to support wind pipe joint.

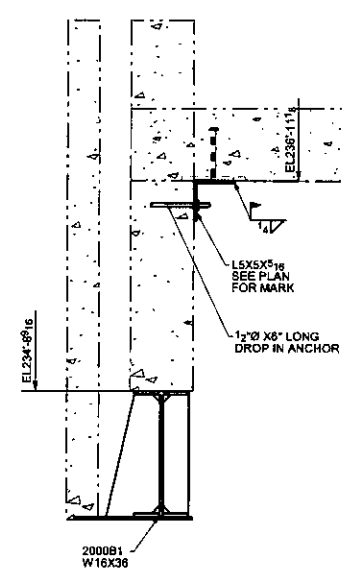


See previous page section 9
How does korallath attach?

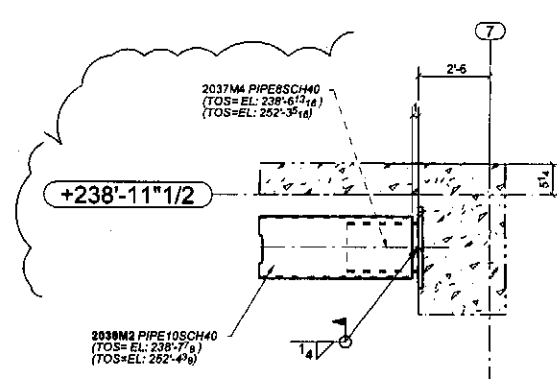
2 - PLATES - 2045M2



A-A



E-E

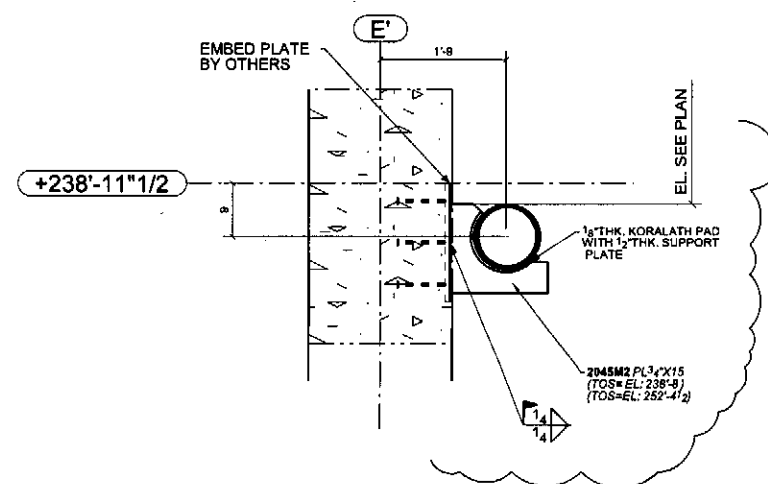


J-J

Weld sleeve to Embed.

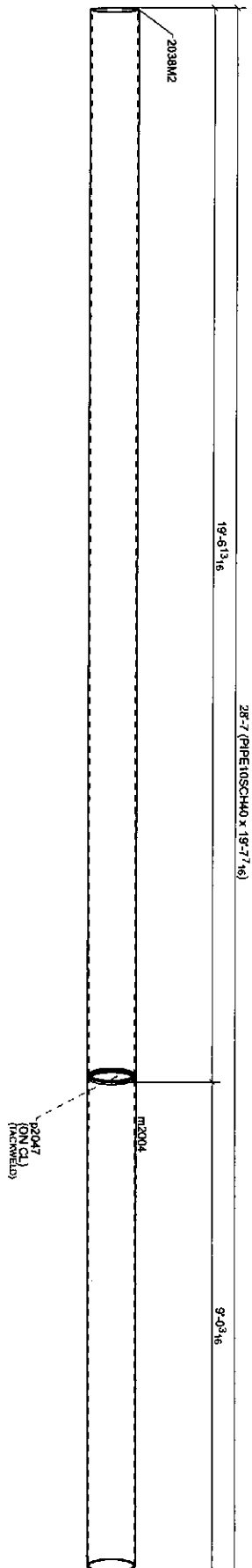
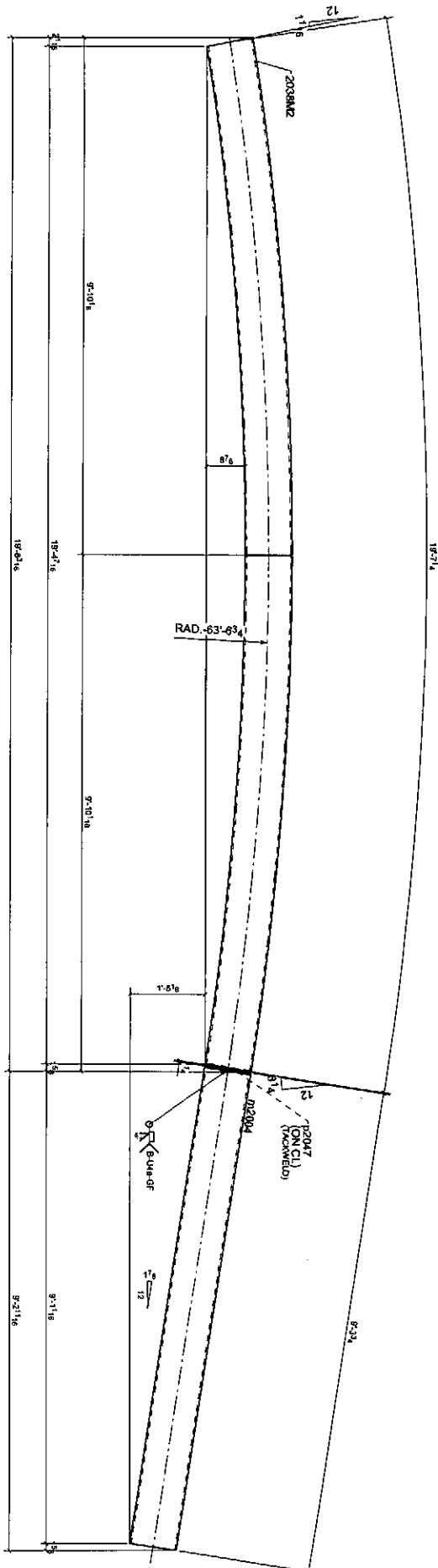
NG PLAN - MAIN LEVEL

EL = SEE PLAN & SECTION SHEET WITH DRAWING: SECTION AND ELEVATION VIEWS
ES SEQUENCE NUMBER



H-H

D	04/28/11		For Field Use
C	04/13/11	DR	WIND GIRT-FOR RE-APPR
B	02/24/11	YR	UPDATE PER GC COMMENT



2 - GIRTS - 2038M2