

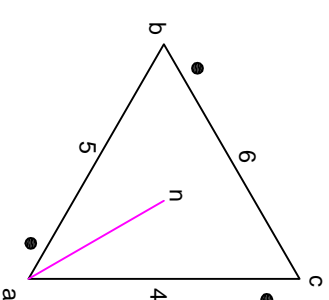
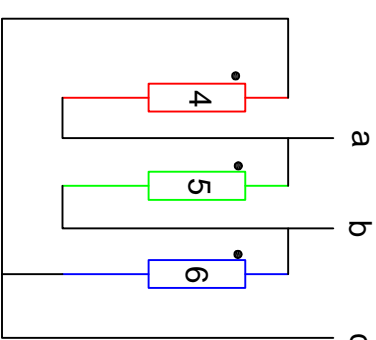
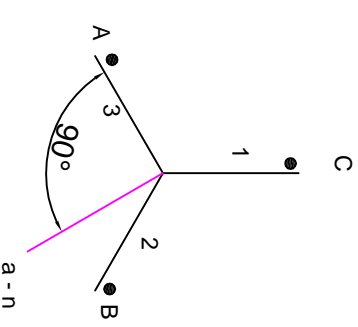
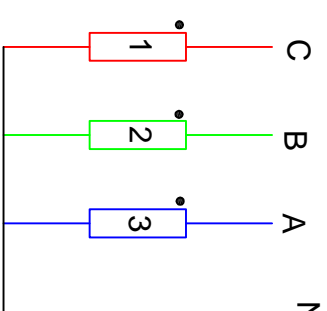
a-n lags A-N by  $150^\circ$

c-a is in phase with A-N

a-b is in phase with B-N

b-c is in phase with C-N

**Yd5**



a-n lead A-N by  $90^\circ$  (lags by  $270^\circ$ )

c-a is in phase with C-N

a-b is in phase with B-N

b-c is in phase with A-N

**A & C swapped at primary**