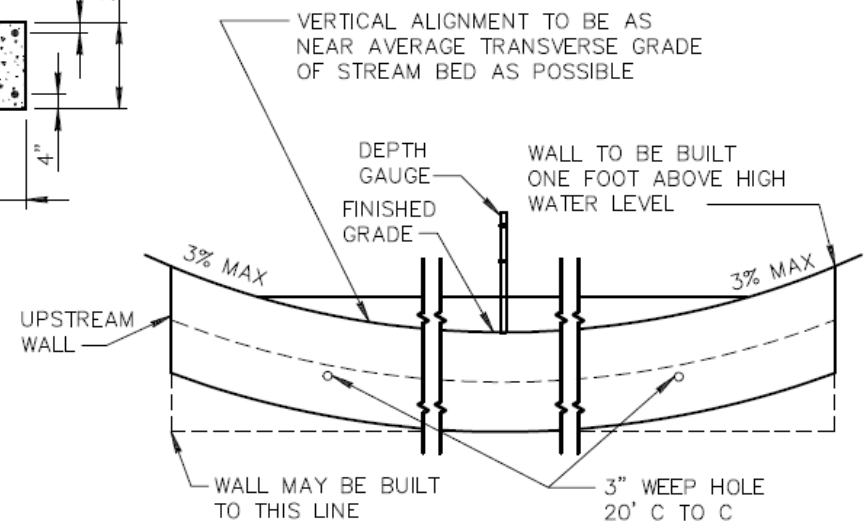


DEPTH GAUGE DETAIL  
(OPTION OF THE CONTRACTING AGENCY)



NOTES:

1. FORD WALLS SHALL BE CLASS 'A' CONCRETE PER SECT. 725.
2. DEPTH GAUGE SHALL BE PAINTED 2 COATS WHITE ENAMEL. NUMERALS AND MARKERS SHALL BE 1 COAT BLACK ENAMEL.
3. NUMBERS ON DEPTH GAUGE TO BE 2" HIGH.
4. HEIGHT OF DEPTH GAUGE OPTIONAL.
5. TWO DEPTH GAUGES MAY BE USED. ONE ON EACH END OF UPSTREAM WALL. START WITH 2' INSTEAD OF 1'.



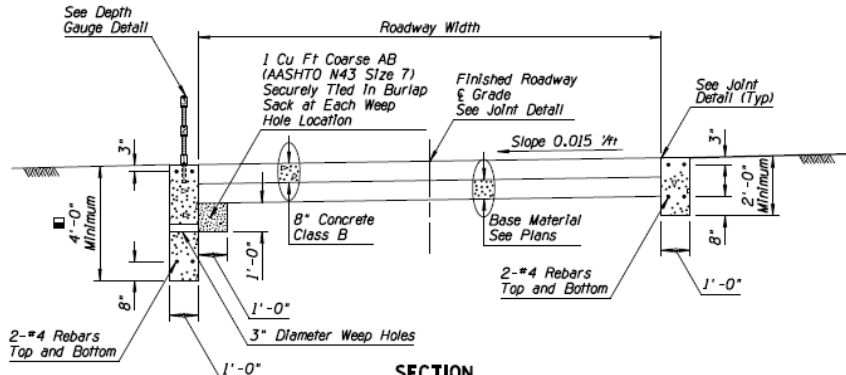
ELEVATION LOOKING UPSTREAM

# GENERAL NOTES

1. Ford walls shall be Class B concrete.
2. Depth gauge tubing shall be protected against concrete entering through bottom or perforations.
3. Depth gauge tubing and both sides of numeral tabs shall be painted with two coats of white enamel. Numerals and markers shall be painted with one coat of gloss black enamel.
- ② 4. Depth gauge foundation may be utility concrete.

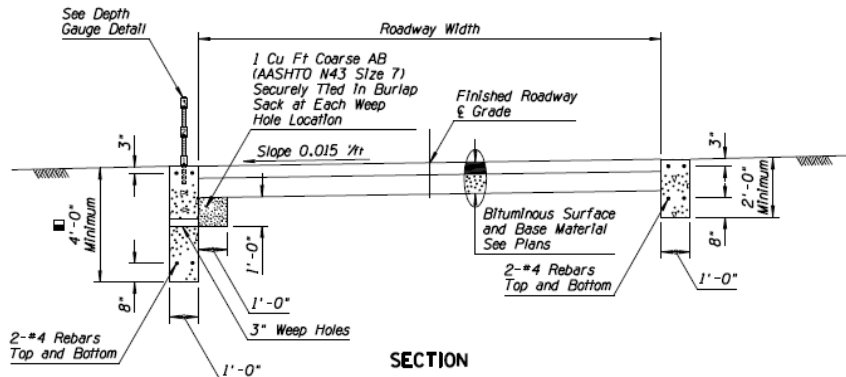


JOINT DETAIL

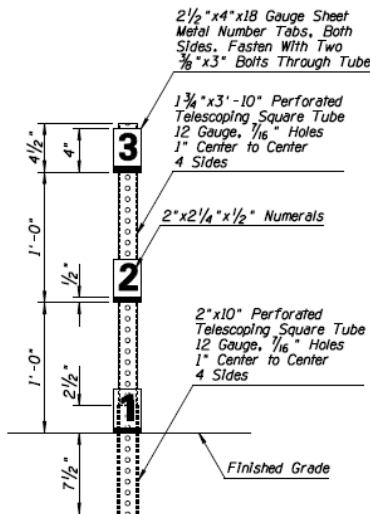


SECTION  
CONCRETE SURFACE ROAD  
WITH CONCRETE WALLS

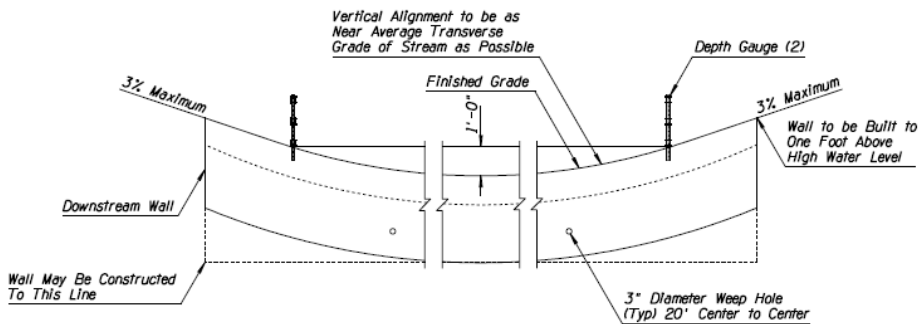
■ Min Distance Below Stream Bed



SECTION  
BITUMINOUS SURFACE ROAD  
WITH CONCRETE WALLS



DEPTH GAUGE DETAIL

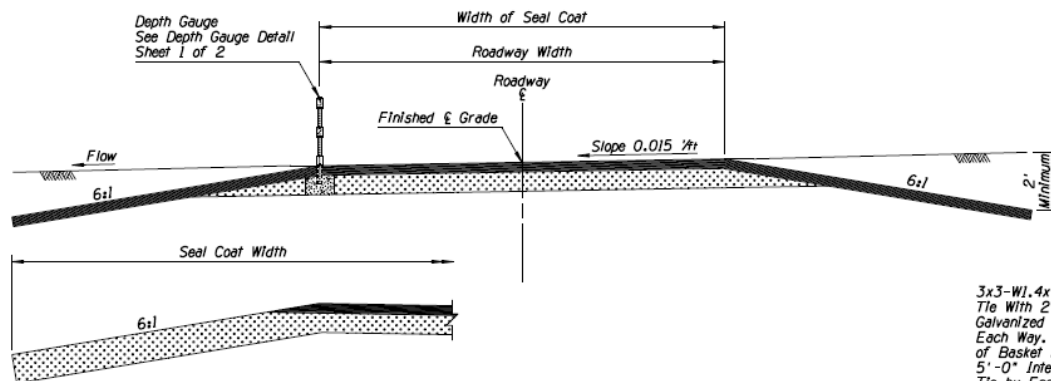


ELEVATION LOOKING UPSTREAM

APPROVED FOR DESIGN <i>May Vignone</i>	STATE OF ARIZONA DEPARTMENT OF TRANSPORTATION ROADWAY STANDARD DRAWINGS	REV. 5/07
APPROVED FOR DISTRIBUTION <i>[Signature]</i>	FORD CONCRETE WALLS	DRAWING NO. C-19,10 Sheet 1 of 2

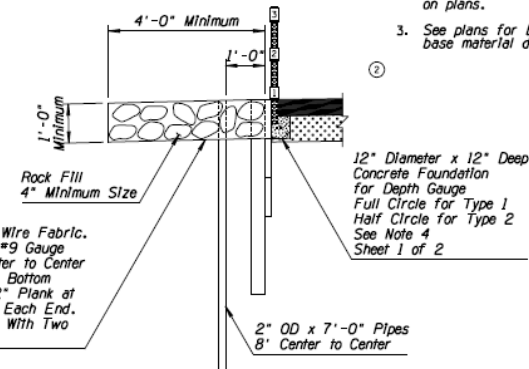
# GENERAL NOTES

1. All timber shall be rough, pressure treated and unpainted.
2. Rock basket, full length of structure, shall be included only when called for on plans.
3. See plans for bituminous surface and base material details.

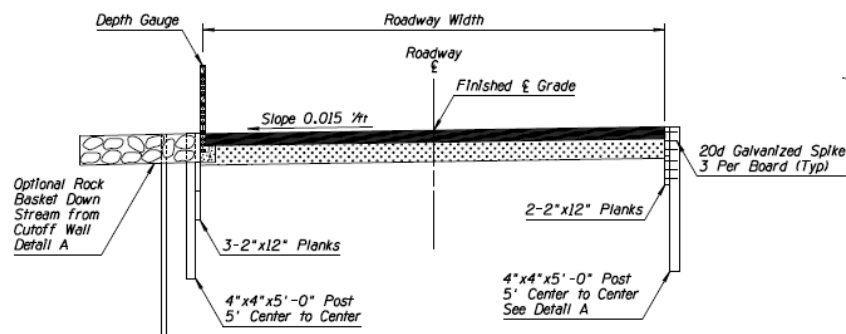


WITH TREATED BASE

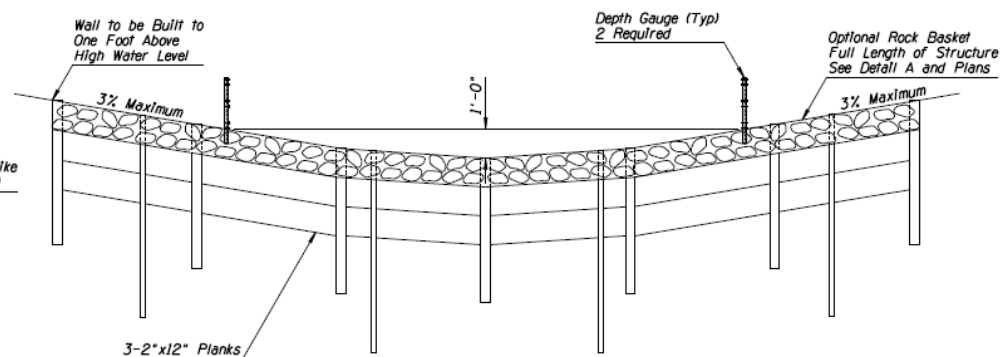
TYPE 1  
BITUMINOUS SURFACE ROAD



DETAIL A



TYPE 2  
BITUMINOUS SURFACE FORD  
TIMBER CUTOFF WALLS



ELEVATION - TYPE 2

APPROVED FOR DESIGN <i>May Vignawia</i>	STATE OF ARIZONA DEPARTMENT OF TRANSPORTATION ROADWAY STANDARD DRAWINGS	REV. 5/07
APPROVED FOR DISTRIBUTION <i>J.D. [Signature]</i>	FORD TYPES 1 AND 2	DRAWING NO. C-19.10 Sheet 2 of 2