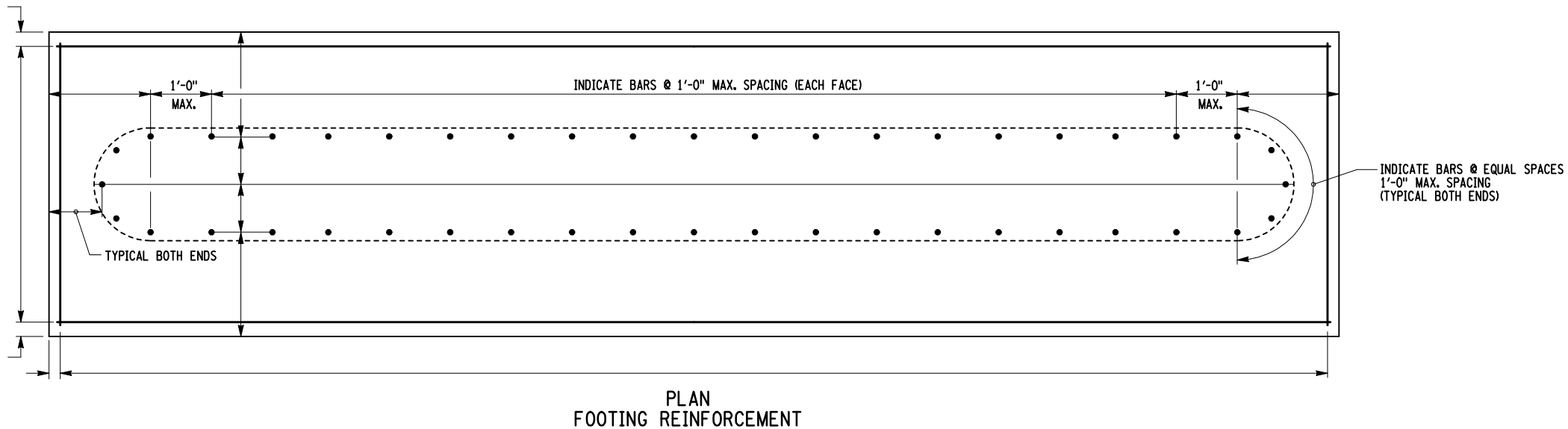


LEGEND	
⊕	CAST-IN-PLACE PILE, ITEM NO. (INDICATE DIAMETER)
⊕	BATTERED CIP PILE, ITEM NO. (INDICATE BATTER)
I	STEEL BEARING PILE, ITEM NO.
⌵	BATTERED BEARING PILE, ITEM NO. (INDICATE BATTER)
PILE CUT-OFF ELEVATION IS . ft.	
FOR PILE SPLICE DETAILS, SEE DWG. NO.	
FOR PILE TIP DETAILS, SEE DWG. NO.	
THE ESTIMATED LENGTH OF PILE IS . ft.	

PILE TABLE	
PILE NO.	LENGTH BELOW CUT-OFF
1	
2	
3	
4	
5	
6	
7	
8	
9	
10	
11	
12	
13	
14	
15	
16	
17	
18	
19	
20	
21	
22	
23	
24	
25	
26	
27	
28	
29	
30	



DESIGNER NOTES:

SEE THE FOUNDATION DESIGN REPORT (FDR) FOR THE APPROPRIATE FOUNDATION NOTES.

DELETE FROM THE LEGEND THE INFORMATION THAT DOES NOT PERTAIN TO THE PARTICULAR SITUATION.

REFER TO BRIDGE MANUAL, SECTION 11 FOR PILE SPACING AND FOOTING EDGE DISTANCE REQUIREMENTS.

CHECK THAT THE MAXIMUM CENTER TO CENTER DESIGN SPACING BETWEEN PILES IN THE SAME ROW IS NOT VIOLATED.

FOR PILE DETAILS, SEE BD-MS5E.

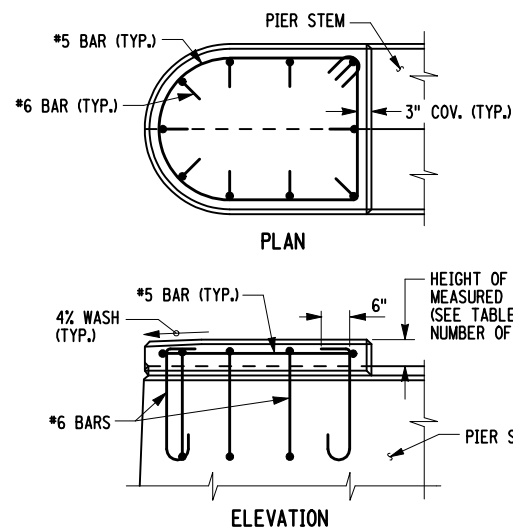
BAR MAY BE PROVIDED WITH HOOK IF NECESSARY FOR DEVELOPMENT.

REFER TO BRIDGE MANUAL, SECTION 15.12 FOR THE REQUIREMENTS OF CORROSION PROTECTED REINFORCEMENT IN SUBSTRUCTURES.

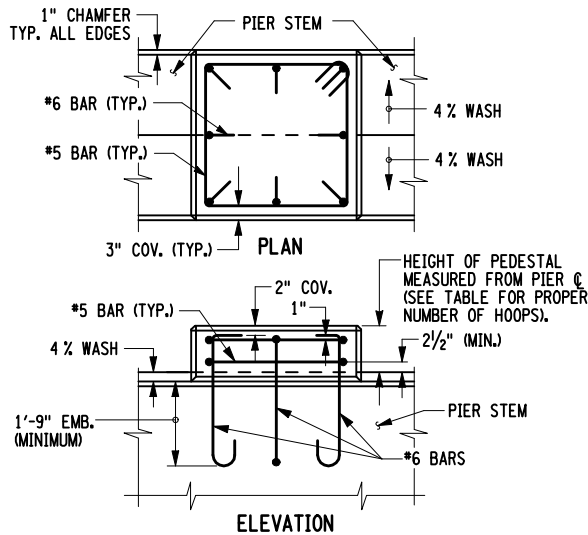
PEDESTAL BARS SHOULD BE LOCATED SO AS NOT TO INTERFERE WITH THE BEARING ANCHOR BOLTS. MAXIMUM SPACING BETWEEN BARS IS 1'-6".

NOTE:

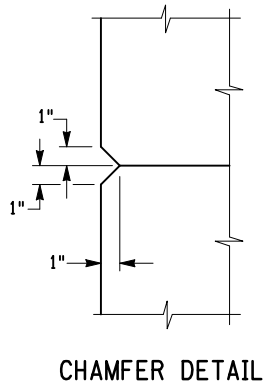
COVER FOR STEEL REINFORCEMENT IN FOOTING SHALL BE 3" UNLESS OTHERWISE NOTED. ALL OTHER COVER SHALL BE 2" UNLESS OTHERWISE NOTED.



PEDESTAL REINFORCEMENT



PEDESTAL HEIGHT	NUMBER OF HOOPS
0.50' - 0.67'	1
0.68' - 0.92'	2
0.93' - 1.17'	3
1.18' - 1.42'	4
1.43' - 1.68'	5



ISSUED 5/01/08		STATE OF NEW YORK DEPARTMENT OF TRANSPORTATION STRUCTURES DESIGN AND CONSTRUCTION DIVISION
REVIS 6/28/10		
		SOLID PIER PILE LAYOUT, FOOTING AND PEDESTAL REINFORCEMENT
	APPROVED: 6/28/10 ORIGINAL SIGNED BY ARTHUR P. YANNOTTI, P.E. ACTING DEPUTY CHIEF ENGINEER (STRUCTURES)	ISSUED UNDER EB 10-024 EFFECTIVE WITH THE LETTING OF 1/06/11