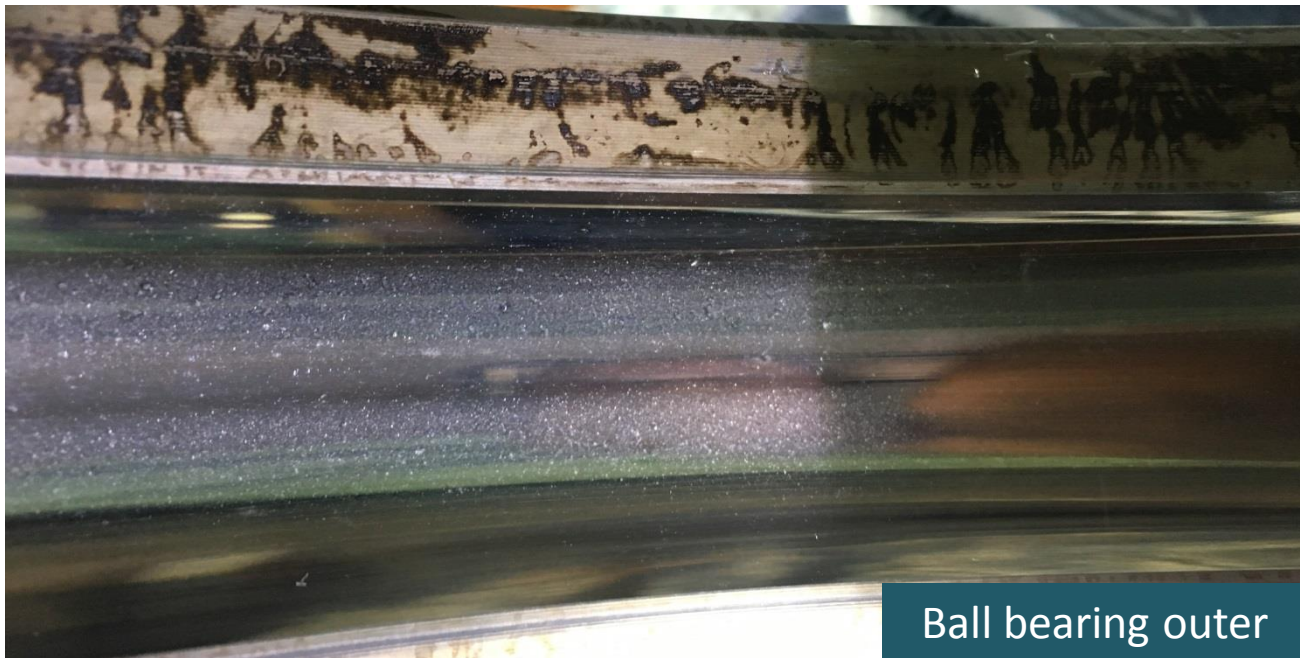




Ball bearing outer



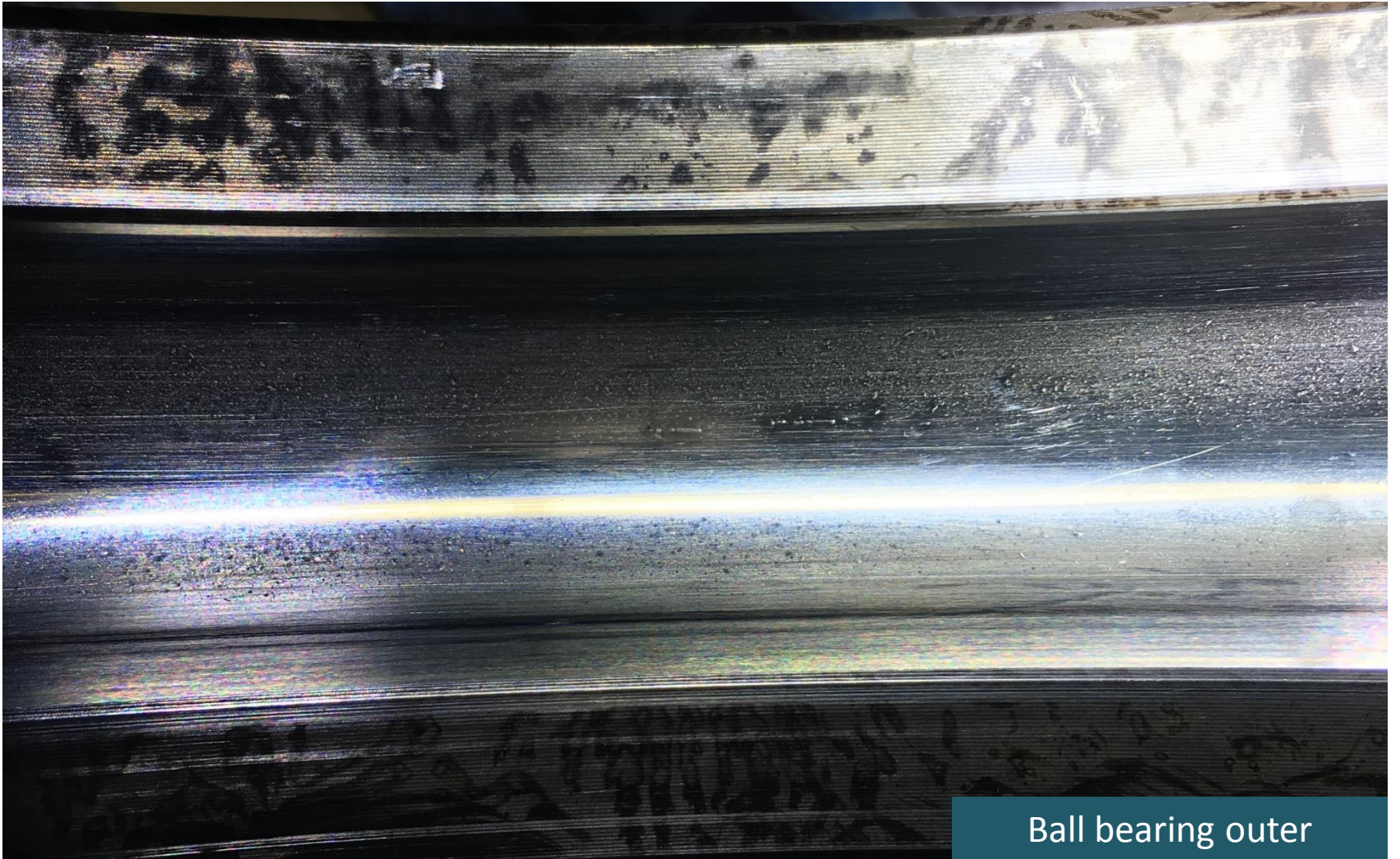
Ball bearing outer



Ball bearing outer



Ball bearing outer



Ball bearing outer



Ball bearing inner



Cylindrical Roller Bearing Outer



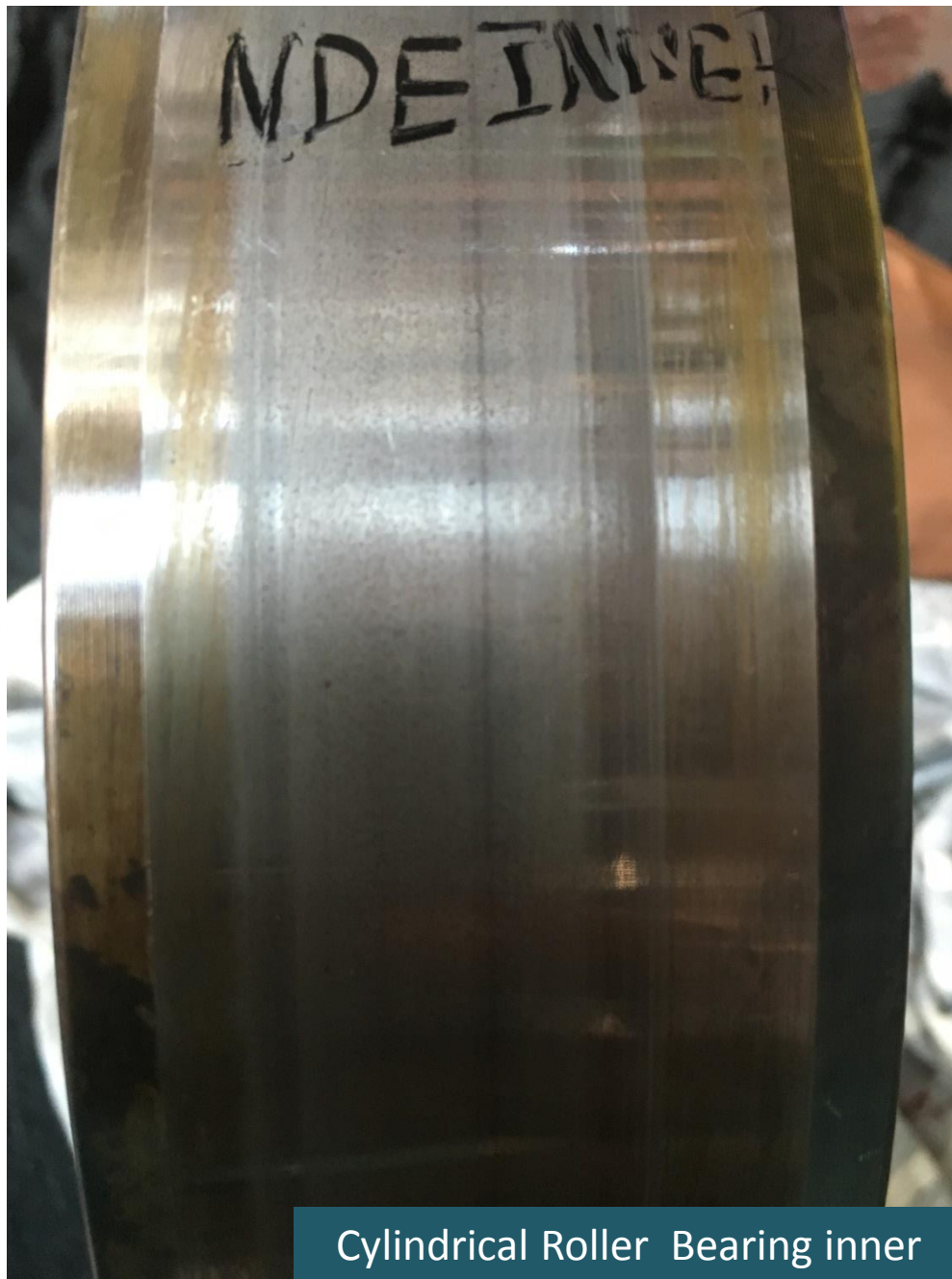
Cylindrical Roller Bearing Outer



Cylindrical Roller Bearing inner

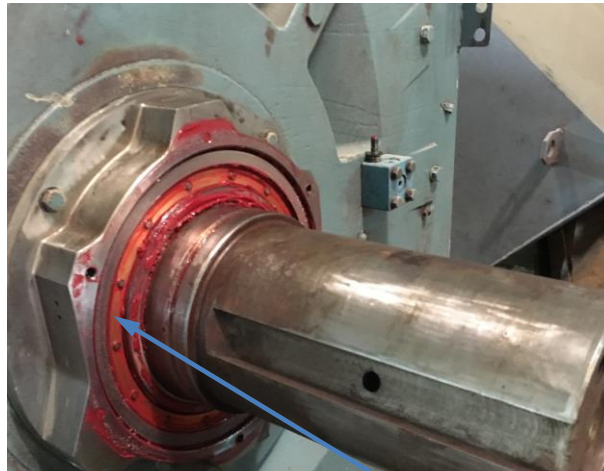


Cylindrical Roller Bearing Outer





Radial clearance with end cover : 0.06mm



Radial clearance without
end cover : 0.24mm