

**MICRO SWITCH**FREEPORT, ILLINOIS, U.S.A.
A DIVISION OF HONEYWELL

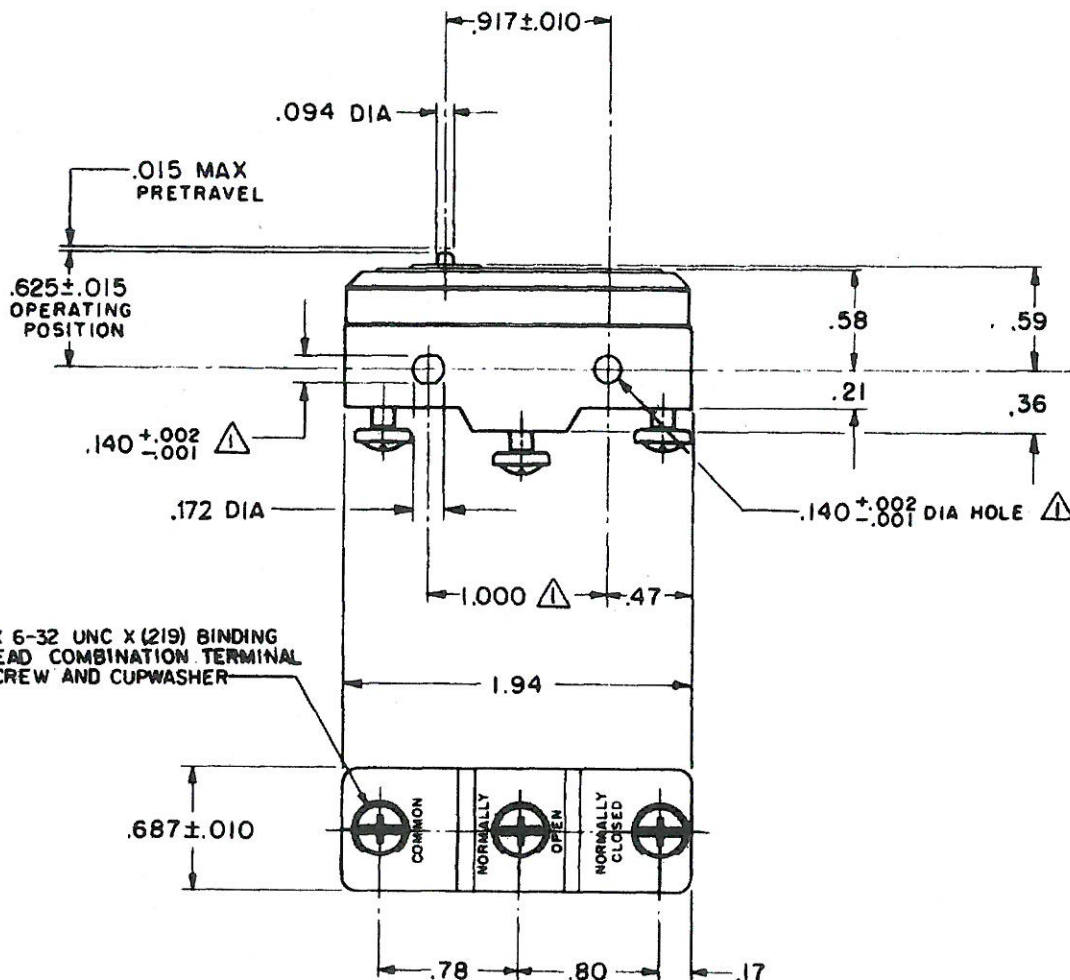
FED. MFG. CODE 91929

SWITCH - BASIC

CATALOG LISTING

BZ-2R-A2

AGM2000 / JG-05660

Original switch3X 6-32 UNC X (219) BINDING
HEAD COMBINATION TERMINAL
SCREW AND CUPWASHER**NOTE**△ - MOUNTING HOLES WILL ACCEPT PINS OR SCREWS
OF .139 MAX DIA ON 1.000 ± .002 CENTERS

THIS DRAWING COVERS A PROPRIETARY ITEM AND IS THE PROPERTY OF MICRO SWITCH, A DIVISION OF MINNEAPOLIS-HONEYWELL REGULATOR CO. THIS DRAWING IS NOT TO BE COPIED OR USED WITHOUT THE APPROVAL OF MICRO SWITCH.

CHARACTERISTICS

OPERATING FORCE ----- 9 - 13 OZ

RELEASE FORCE ----- 4 OZ MIN

DIFFERENTIAL TRAVEL ---- .0004 - .0020

OVERTRAVEL ----- .005 MIN

ELECTRICAL DATA

CONTACT ARRANGEMENT

S P D T

-L74- 15A-125, 250 OR 480 VAC, 2A-800 VAC
1/8HP-125 VAC; 1/4HP-250 VAC
1/2A-125 VDC; 1/4A-250 VDC-L288-
-L306-
-L315-EN05
EC

16A 250V ~ T85 5E4

SCALE FULL

DO NOT SCALE PRINT

UNLESS OTHERWISE
NOTED

DIMENSIONS ARE IN INCHES

TOLERANCES ARE:ONE PLACE (.0) ±.030
TWO PLACE (.00) ±.015
THREE PLACE (.000) ±.005
ANGLES ±

WEIGHT .063 LB

BZ-2R-A2
PAGE 1 OF 1**M**DRAWING
NUMBER

ISSUE

13

REVISIONS

A CO17410

GCH 12 APRIL 63

B CO31092

C CO-175287-B

D CO-175287-B

E CO-175287-B

F CO-175287-B

G CO-175287-B

H CO-175287-B

I CO-175287-B

J CO-175287-B

K CO-175287-B

L CO-175287-B

M CO-175287-B

N CO-175287-B

O CO-175287-B

P CO-175287-B

Q CO-175287-B

R CO-175287-B

S CO-175287-B

T CO-175287-B

U CO-175287-B

V CO-175287-B

W CO-175287-B

X CO-175287-B

Y CO-175287-B

Z CO-175287-B

AA CO-175287-B

AB CO-175287-B

AC CO-175287-B

AD CO-175287-B

AE CO-175287-B

AF CO-175287-B

AG CO-175287-B

AH CO-175287-B

AI CO-175287-B

AJ CO-175287-B

AK CO-175287-B

AL CO-175287-B

AM CO-175287-B

AN CO-175287-B

AO CO-175287-B

FORMTEK

FO-50378

DRAWN

CHECK

LSD

12 APRIL 63

GCH

12 APRIL 63

CHECK

LSD

12 APRIL 63

GCH

12 APRIL 63

CHECK

LSD

12 APRIL 63

GCH

12 APRIL 63

CHECK

LSD

REPLACES

RELEASE NO.

CHECK

29 AUG 05

RJ

CHECK

22 APR 63

22 APR 63

LSD

CHECK

LSD

12 APRIL 63

CHECK

LSD

UE B400-120

5

H MICRO SWITCH
FREEPORT, ILLINOIS, U.S.A.
A DIVISION OF HONEYWELL
FED. MFG. CODE 91829

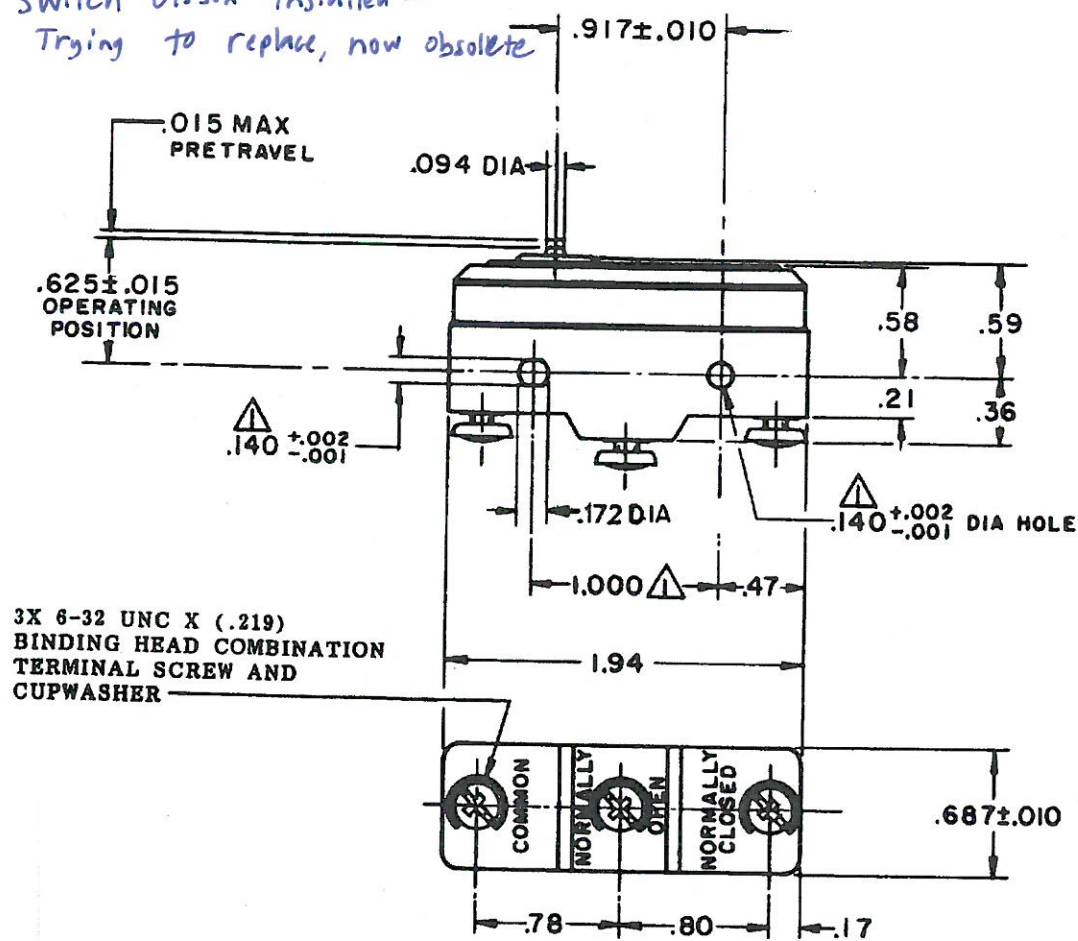
SWITCH-BASIC

CATALOG LISTING
BM-2R-A2

Switch Olsson Installed -
Trying to replace, now obsolete

BM-2R-A2
M
2
4

RELEASE NO. SR 12787
 CHECK
 REVISIONS
 A SR12787
 M B F
 20 MAR 67
 B CO-73217-1
 J A L
 22 NOV 93
 C CO-77589
 K D R
 29 MAR 94
 CHECK
 L S D
 22 MAR 67
 CHECK
 M B F
 21 MARCH 67
 CHECK
 DRAWN
 FO-50378



NOTE -
▲ MOUNTING HOLES WILL ACCEPT PINS OR SCREWS
OF .139 MAX DIA ON 1.000±.002 CENTERS

THIS DRAWING COVERS A PROPRIETARY ITEM AND IS THE PROPERTY OF MICRO SWITCH, A DIVISION OF HONEYWELL. THIS DRAWING IS NOT TO BE COPIED OR USED WITHOUT THE APPROVAL OF MICRO SWITCH.

CHARACTERISTICS	
OPERATING FORCE	9-13 OZ
RELEASE FORCE	4 OZ MIN
DIFFERENTIAL TRAVEL	.0004-.0020
OVERTRAVEL	.005 MIN

ELECTRICAL DATA	
CONTACT ARRANGEMENT S P D T	
UNDERWRITERS' LAB, INC. LISTED RATING 28 A-125, 250, OR 480 VAC 1/4 HP-125 VAC; 1/2 HP-250 VAC 1/2 A-125 VDC; 1/4 A-250 VDC	

SCALE FULL	
DO NOT SCALE PRINT	
UNLESS OTHERWISE NOTED DIMENSIONS ARE IN INCHES	
TOLERANCES ARE:	
ONE PLACE	(.0) ±.030
TWO PLACE	(.00) ±.015
THREE PLACE	(.000) ±.005
ANGLES	±
WEIGHT .060 LB	



MICRO SWITCH

A DIVISION OF HONEYWELL REGULATOR CO.
FED. MFR. CODE 91929

SWITCH - BASIC

CATALOG LISTING
BM-1R-A2

Replacement for BM-2R-A2
per Honeywell

BM-1R-A2

M

DRAWING
NUMBER

ISSUE

REPLACES

RELEASE NO. SR 9544

23NOV07

CHECK

22 MAR 61

CHECK

22 MAR 61

CHECK

22 MAR 61

CHECK

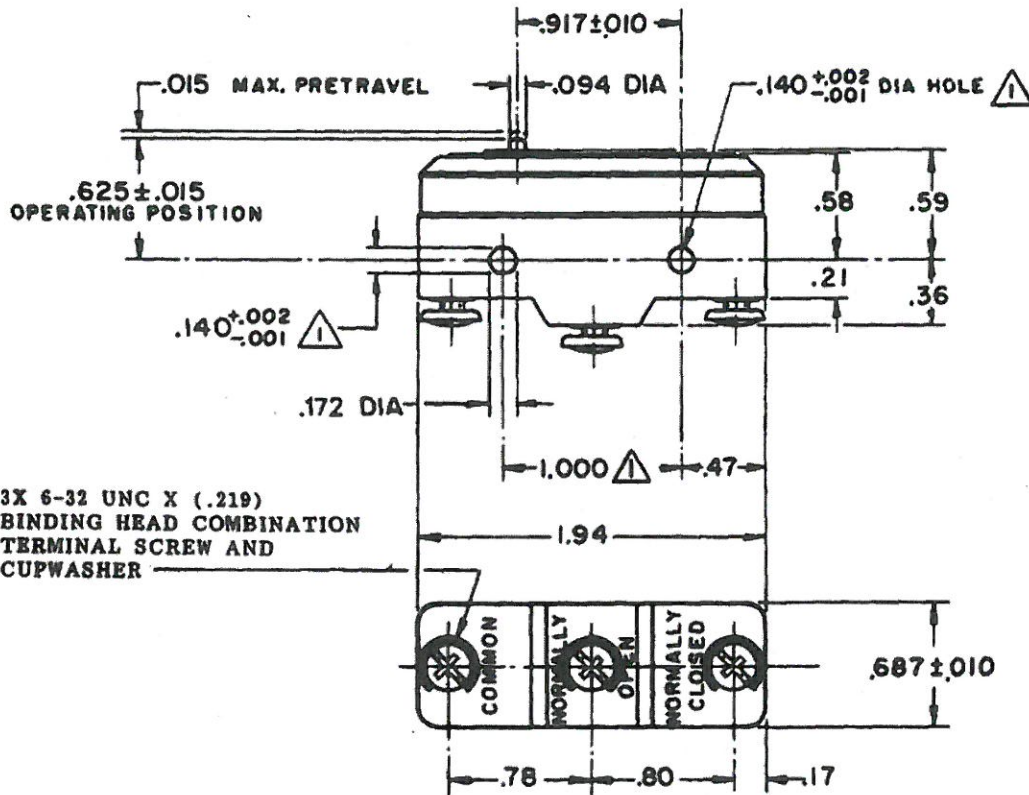
22 MAR 61

CHECK

22 MAR 61

CHECK

22 MAR 61



NOTE -
△ - MOUNTING HOLES WILL ACCEPT PINS OR SCREWS
OF .139 MAX DIA ON 1.000 ±.002 CENTERS

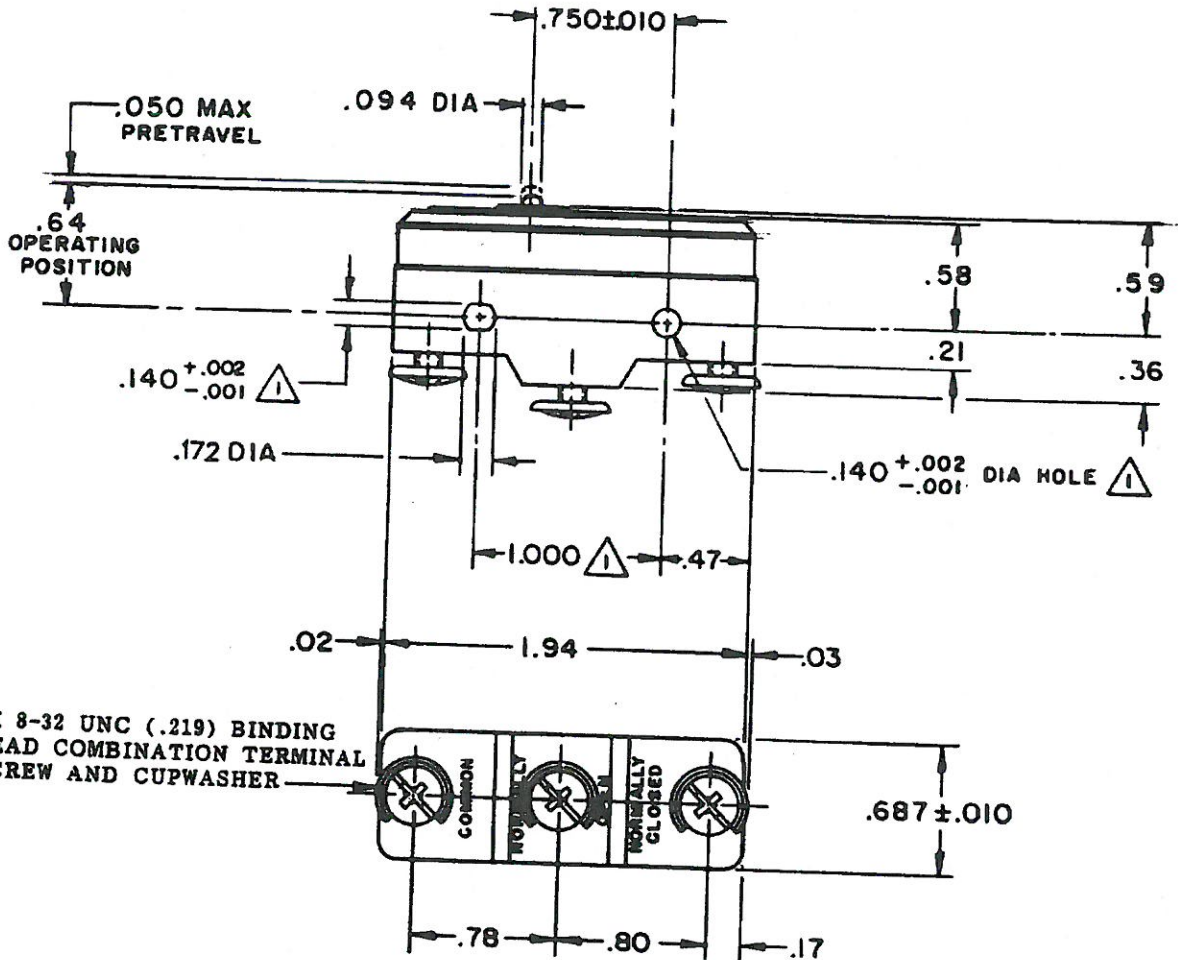
THIS DRAWING COVERS A PROPRIETARY ITEM AND IS THE PROPERTY OF MICRO SWITCH, A DIVISION OF MINNEAPOLIS-HONEYWELL REGULATOR CO. THIS DRAWING IS NOT TO BE COPIED OR USED WITHOUT THE APPROVAL OF MICRO SWITCH.

CHARACTERISTICS	ELECTRICAL DATA		SCALE FULL
OPERATING FORCE - - - - - 7-10 OZ	CONTACT ARRANGEMENT S P D T	BREAK DISTANCE .010 MIN	DO NOT SCALE PRINT
RELEASE FORCE - - - - - 4 OZ MIN	-L181- 22 A - 125, 250, OR 400 VAC 1/2 HP - 125 VAC; 1 HP - 250 VAC L288 L315 L318 22A 250V ~ T85 5E4		UNLESS OTHERWISE SPECIFIED DIMENSIONS ARE IN INCHES TOLERANCES ARE:
DIFFERENTIAL TRAVEL - - - .0005-.001			ONE PLACE (.1) 2.000
OVERTRAVEL - - - - - .005 MIN			TWO PLACE (.00) 2.010
			THREE PLACE (.000) 2.000
			WEIGHT .060 LB

RASTER

O-50378

25-amp switch of same
 series, unsure if compatible



3X 8-32 UNC (.219) BINDING
 HEAD COMBINATION TERMINAL
 SCREW AND CUPWASHER

NOTE -
 MOUNTING HOLES WILL ACCEPT PINS OR SCREWS
 OF .139 MAX DIA ON 1.000 CENTERS

THIS DRAWING COVERS A PROPRIETARY ITEM AND IS THE PROPERTY OF MICRO SWITCH, A DIVISION OF MINNEAPOLIS-HONEYWELL REGULATOR CO. THIS DRAWING IS NOT TO BE COPIED OR USED WITHOUT THE APPROVAL OF MICRO SWITCH.

CHARACTERISTICS

OPERATING FORCE ——— 14-22 OZ
 RELEASE FORCE ——— 10 OZ MIN
 DIFFERENTIAL TRAVEL ——.0020-.0075
 OVERTRAVEL ———.010 MIN

ELECTRICAL DATA

CONTACT ARRANGEMENT
 S P D T

25-A-125, 250, 480 VAC 1 HP-125 VAC;
 2 HP-250 OR 480 VAC; PILOT DUTY
 750 VA-480 VAC, MAX; 60/75°C (Cu)



SCALE FULL

DO NOT SCALE PRINT

UNLESS OTHERWISE
 SPECIFIED
 DIMENSIONS ARE IN INCHES
TOLERANCES ARE:

ONE PLACE (.0) ±.005
 TWO PLACE (.00) ±.005
 THREE PLACE (.000) ±.005
 ANGLES ±

WEIGHT .063 LB

BE-2R-A4

M

DRAWING
 NUMBER

10

10

10

10

10

REVISIONS

A CO16861

9 NOV 62

B CO30432

9 MAY 72

C CO 32144

GLM 27 JUL 78

D CO30827

C J H 9 APR 76

E CO 58782

WJM 24 JAN 86

F CO 73287-G

20 OCT 93

G CO 77588

K D R 29 MAR 94

FO-90378

DRAWN

CHECK

9 NOV 62

MBF

9 NOV 62

CHECK

14 NOV 62

DAW

14 NOV 62

CHECK

14 NOV 62

DAW

14 NOV 62

CHECK

14 NOV 62