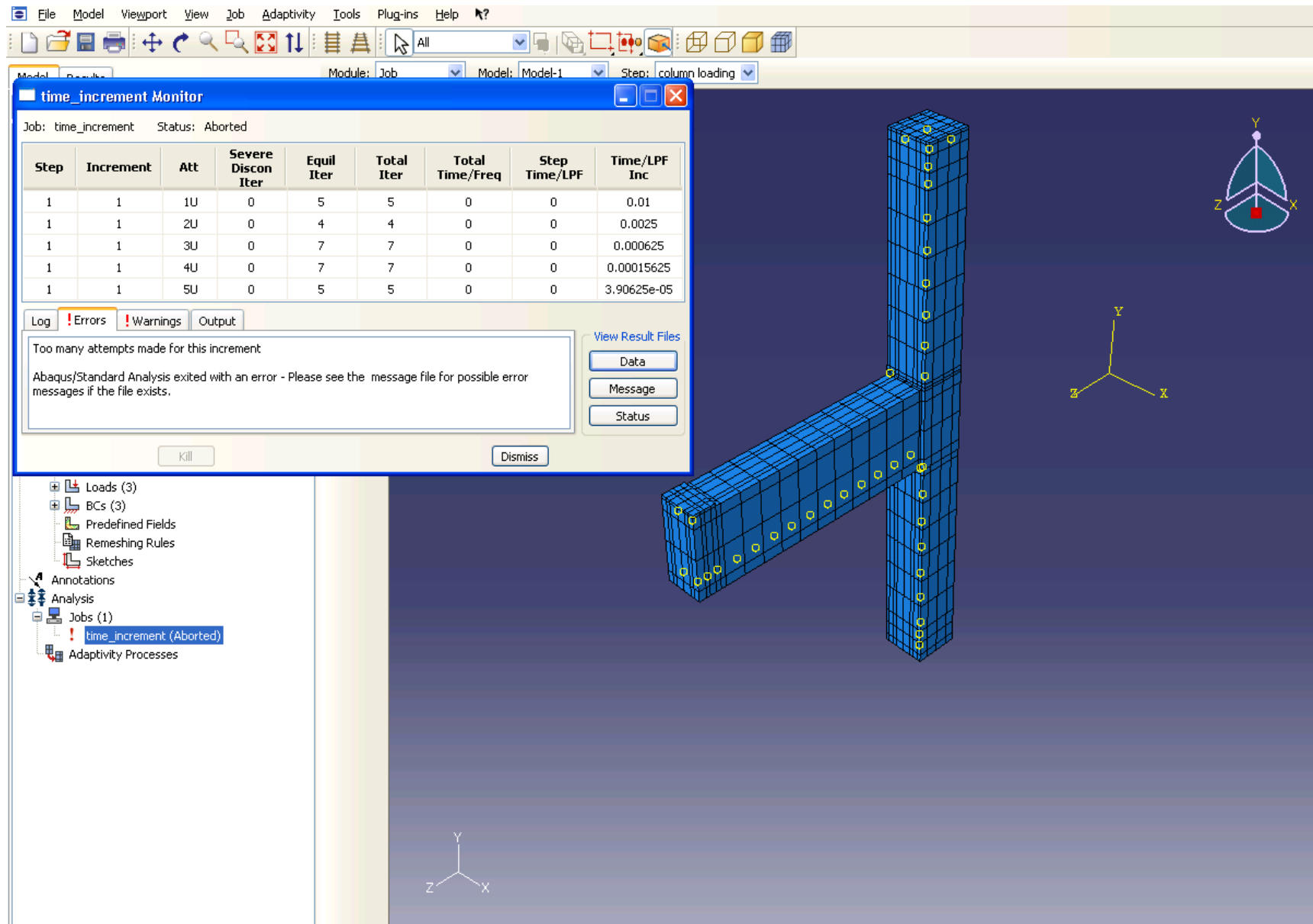
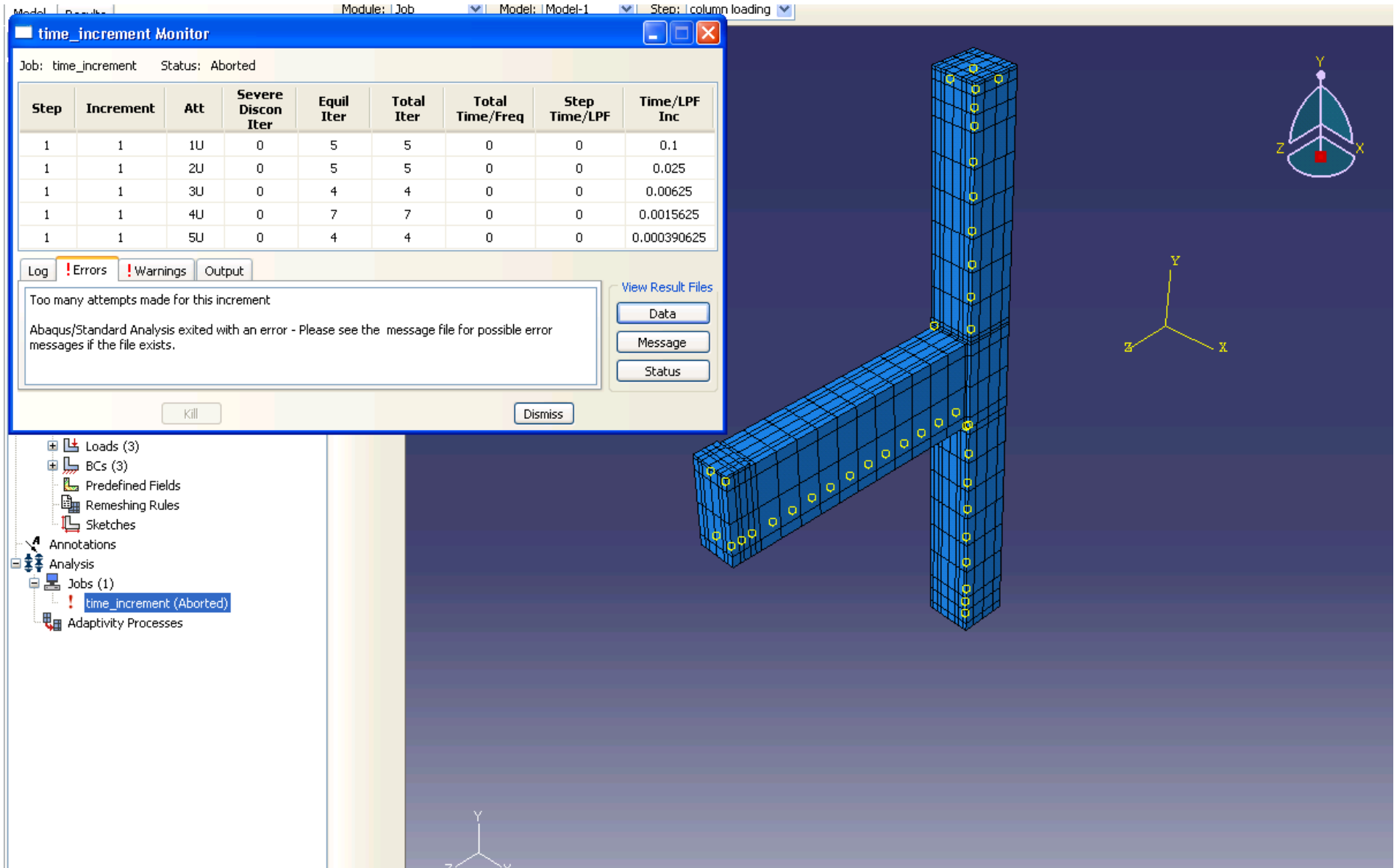


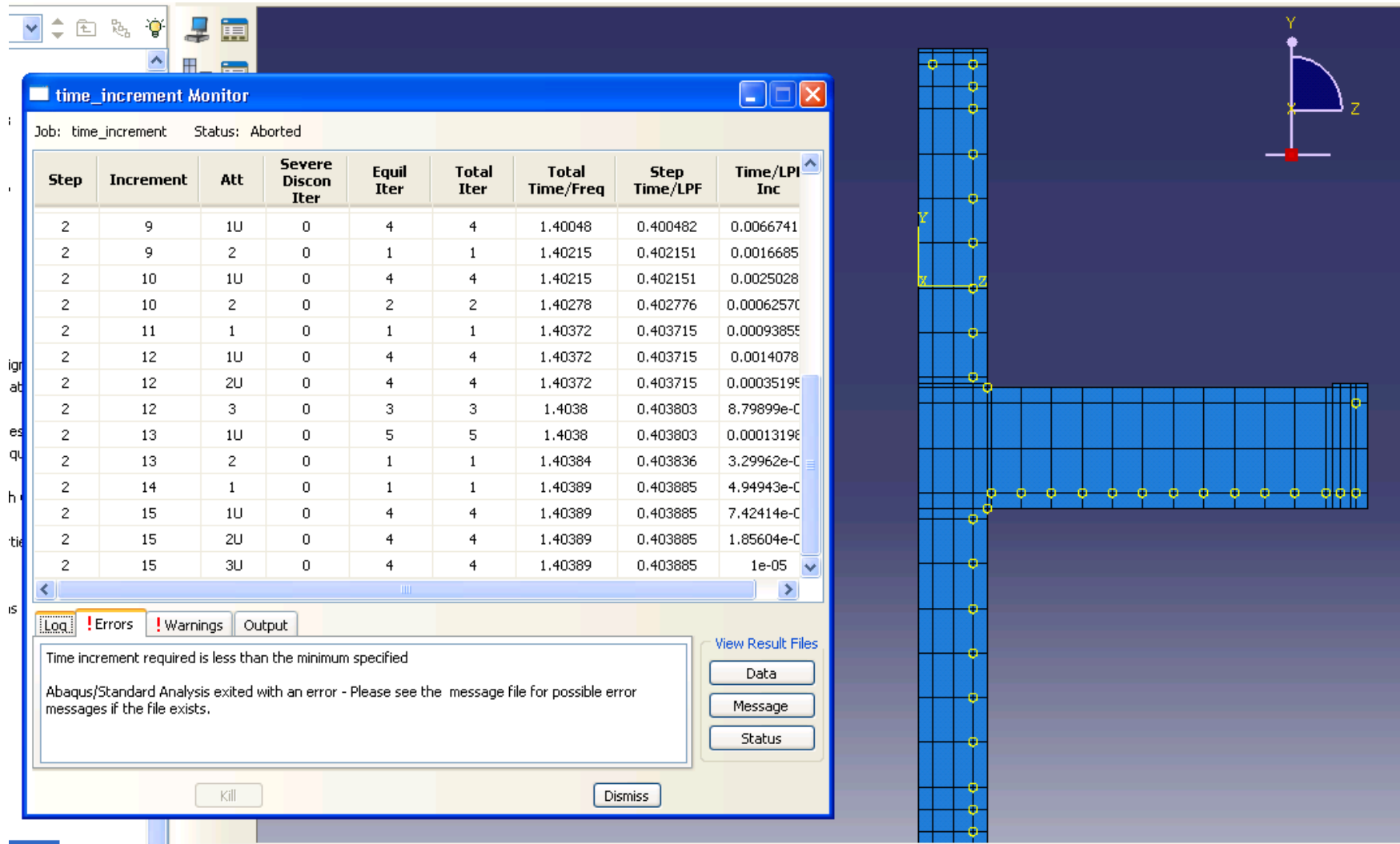
Model with Rebar:
inc=10000
Beam Loading: Static; 0.01,1E-08,1



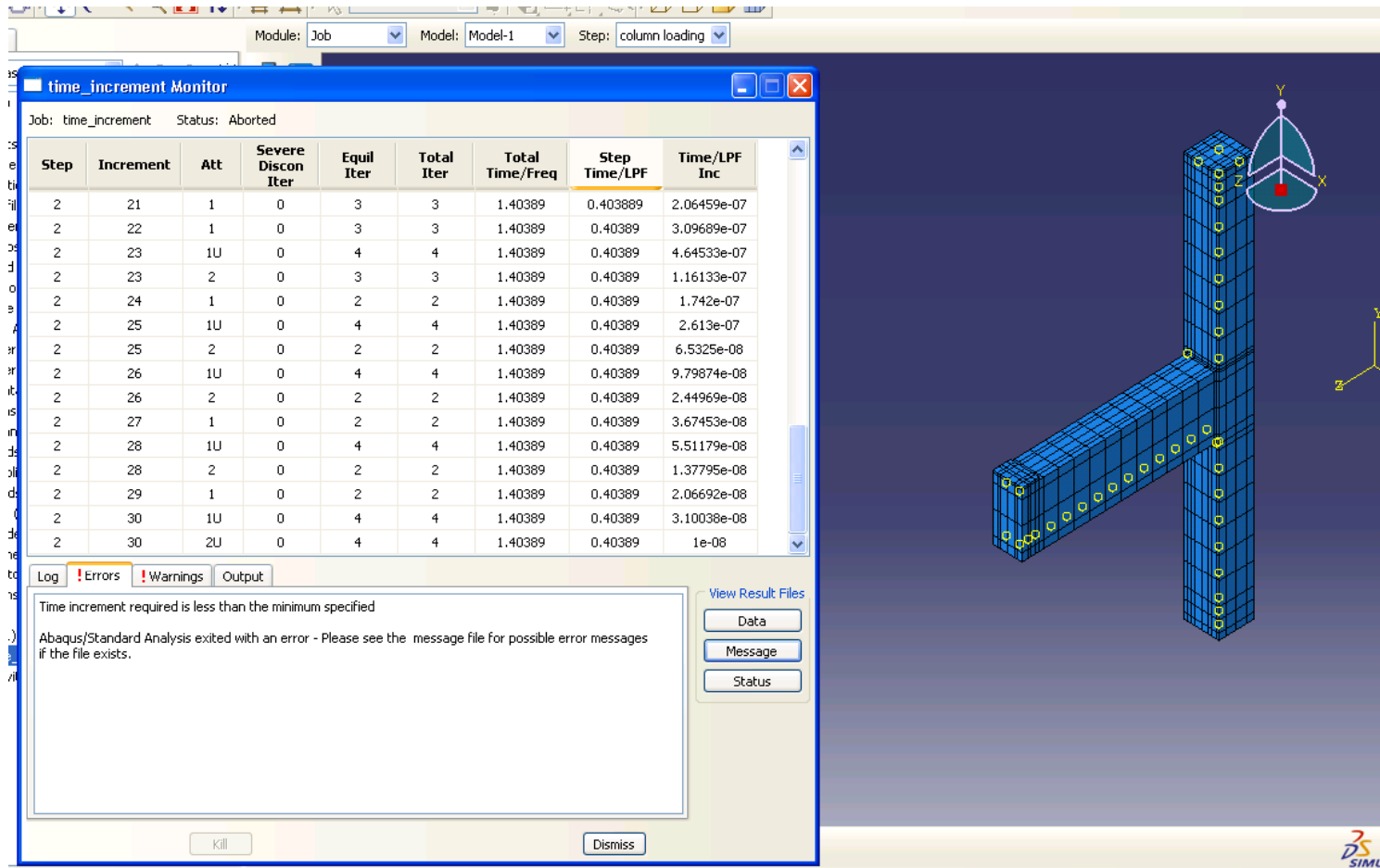
Model with Rebar:
inc=1000
Beam Loading: Static; 0.1,1E-05,1



Model without Rebar:
 inc=1000
 Beam Loading: Static; 0.1,1E-05,1



Model without Rebar:
 inc=10000
 Beam Loading: Static; 0.1,1E-08,1



```

me_increment aborted due to errors.
ob input file "time_increment.inp" has been submitted for analysis.
me_increment: Analysis Input File Processor completed successfully.
in job time_increment: Time increment required is less than the minimum specified
me_increment: Abaqus/Standard aborted due to errors.
in job time_increment: Abaqus/Standard Analysis exited with an error - Please see the message file for possible error messages if the file
exists.
me_increment aborted due to errors.
ob input file "time_increment.inp" has been submitted for analysis.
me_increment: Analysis Input File Processor completed successfully.
in job time_increment: Time increment required is less than the minimum specified
me_increment: Abaqus/Standard aborted due to errors.
in job time_increment: Abaqus/Standard Analysis exited with an error - Please see the message file for possible error messages if the file
exists.
me_increment aborted due to errors.

```