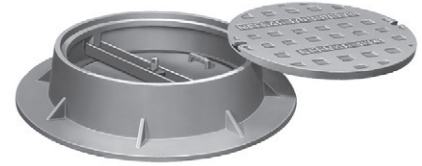
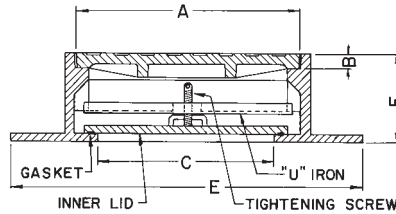


## R-1755 Series Gasket-Sealed, Frost and Water-Resistant Frame, Solid Lid and Inner Lid

### Heavy Duty

All units furnished with neoprene gasket, tightening bolt and locking bar. Lids are provided with Type F concealed watertight pickhole (see page 14 for details). Not suitable for use as a pressure manhole.

Security saddle plate available upon request.  
When eye bolt is padlocked, saddle plate prevents bolt from being turned, so lock bar cannot be removed.

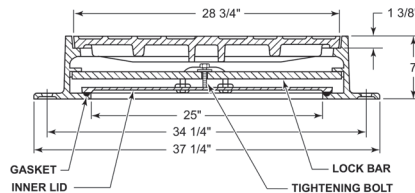


Security Saddle Plate

Catalog No.	Dimensions in inches					
	A	B	C	E	F	Lid
R-1755-B	23	1 1/2	18	36	9	Type B
R-1755-C	24	1 1/2	20	35	7 1/2	Type C
R-1755-E	26	1 1/2	22	38	7	Type C
R-1755-E1	30	1 1/2	24	39 3/16	6 1/2	Type C
R-1755-G	32	1 1/2	28	46	7	Type B
R-1755-G1	32	1 1/2	28	40	6 1/2	Type B

## R-1755-F2 Frost/Watertight Frame, Solid and Inner Lid

### Heavy Duty



## R-1755-F2LM Frost/Watertight LiftMate Frame, Solid Gasketed Lid and Inner Lid

### Heavy Duty

Hinge plug available for self-seal application.  
See page 13 for LiftMate information.

