

GWS

*new
carbon*

(VOID)

*no center
mm's steel joist*

Great West Steel Industries

GREAT WEST STEEL JOISTS



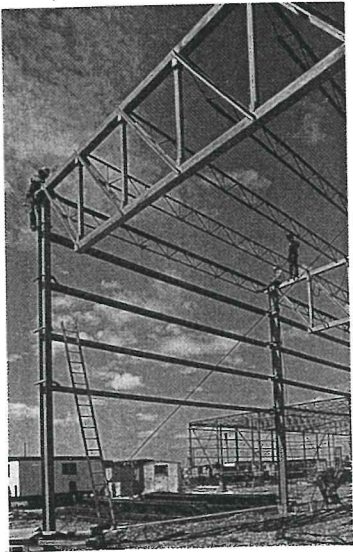
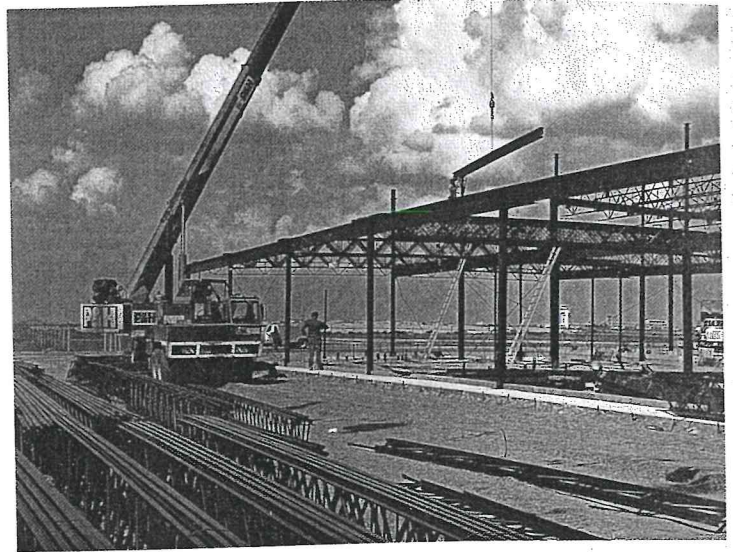
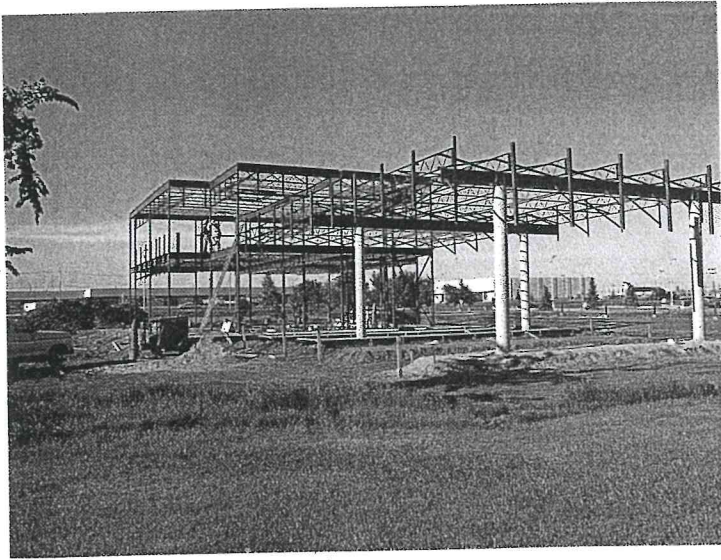
ALLOWABLE STRESS

GWS

IMPERIAL UNITS

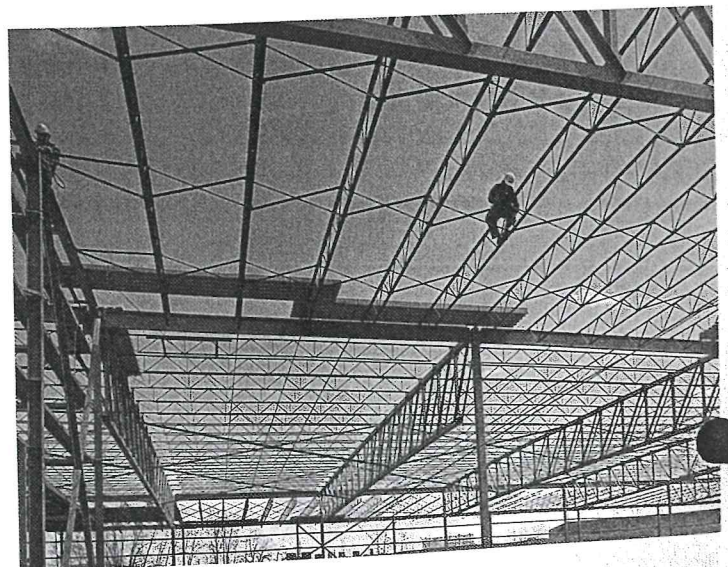
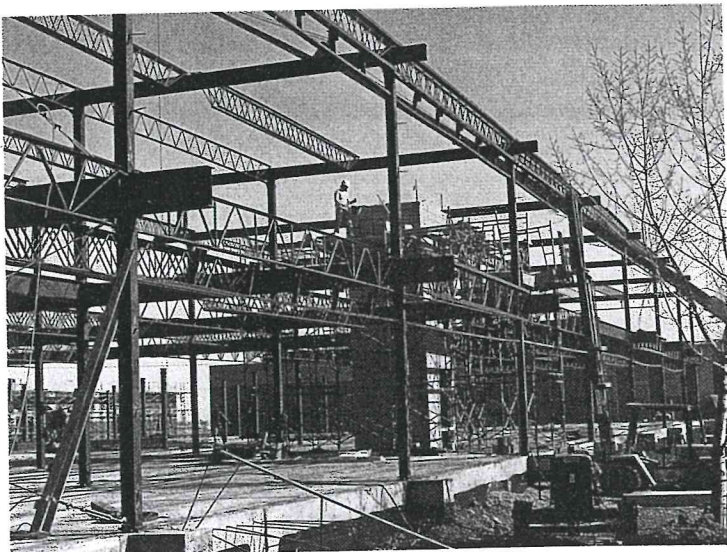
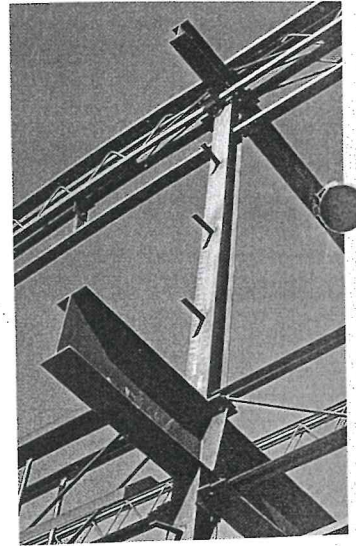


Great West Steel Industries



The Company provides the construction industry with the following products and services:-

OPEN WEB STEEL JOISTS
STRUCTURAL STEEL
TRUSSES
MISCELLANEOUS IRON
PLATEWORK
FURNACES
ERECTION
CRANE RENTALS





Great West Steel Industries Inc.

GREAT WEST STEEL JOISTS



American Institute
of Steel Construction Inc.



Canadian Institute
of Steel Construction



Canadian
Welding Bureau

Great West Steel Industries Inc., Kent, Washington (near Seattle) is a division of Great West Steel Industries Ltd. servicing the construction industry in the Pacific Northwest, Alaska, California, Hawaii, Western and Northern Canada.

The Company is a member of the American Institute of Steel Construction (AISC) and the Canadian Institute of Steel Construction and is fully approved by the Canadian Welding Bureau (CWB).

Great West Steel uses modern engineering design and fabrication methods to produce exceptionally economical open web steel joists.

Competent, qualified engineering and technical personnel at all plants enforce a continuous programme of Quality Control, Inspection and Testing.

The hot rolled chord sections are high strength steel of 400 megapascal (58 KSI) specified minimum yield. This material is specially rolled for Great West Steel using closely controlled chemistry to obtain the required high yield strength while maintaining qualities of ductility and weldability.

Joist capacities are calculated in allowable stress design and imperial units. Architects, Engineers and Owners in Western North America will find that the new joist series will contribute to the efficient and economical design of buildings.

This catalogue lists typical joists only. A much larger range of joists can be supplied to suit specific needs. Higher capacity or composite joists can be specially designed and fabricated to satisfy special requirements.

All joists are individually engineered for each specific span and loading condition.

A limit states design and metric units catalogue is also available upon request.

Contents

	Page
Chord Dimensions and Properties	2
Joist Dimensions and Properties	3-5
Joist Deflection, Camber and Bridging	6
Description of Joist Selection Tables	7
Method of Joist Selection	7
Joist Selection Tables	8-19
Joist Support Details	19
Duct Dimensions through Joists	20



Great West Steel Industries Inc.

7038 South 196th Street
Kent, Washington (near Seattle) 98031-1199
Telephone (206) 872-8730 Telex 0032-8437

A division of
GREAT WEST STEEL INDUSTRIES LTD.

2600 Oceanic Plaza
1066 West Hastings Street
Vancouver, B.C., Canada V6E 3Z2

New Westminster Richmond Edmonton Calgary Saskatoon

*New Haven
Main N.Y.
Co.*

5th Edition 1st Printing

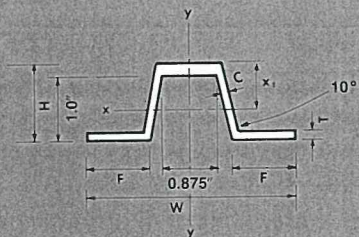
GREAT WEST STEEL INDUSTRIES LTD.

I.C.B.O. APPROVAL NO.

PFC-4047

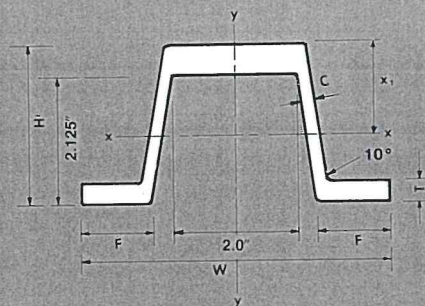
Shallow Hat Section

(LETTERS FROM C TO K IN TABLES)



Deep Hat Section

(LETTERS FROM L TO Q IN TABLES)



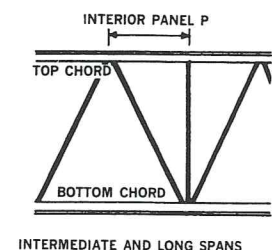
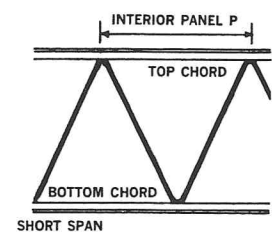
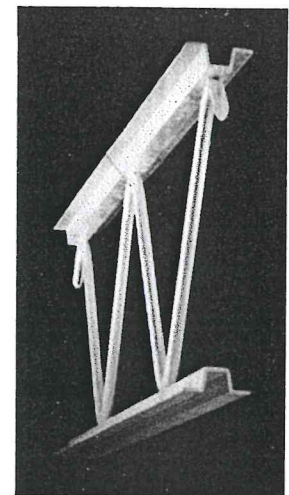
CHORD			DIMENSIONS					PROPERTIES				
SIZE	WEIGHT lbs./ft.	AREA in. ²	W in.	F in.	H in.	T in.	C in.	I _x in. ⁴	S _x in. ³	r _x in.	r _y in.	x ₁ in.
SHALLOW HAT SECTIONS												
C	2.172	0.639	3.23	1.000	1.133	0.133	0.126	0.113	0.170	0.420	0.835	0.662
D	2.578	0.758	3.23	1.000	1.170	0.170	0.133	0.139	0.203	0.429	0.851	0.688
E	3.028	0.890	3.23	1.000	1.211	0.211	0.140	0.170	0.238	0.437	0.864	0.714
F	3.593	1.057	3.98	1.375	1.213	0.213	0.140	0.193	0.249	0.427	1.061	0.774
G	4.285	1.260	3.98	1.375	1.264	0.264	0.149	0.236	0.293	0.433	1.076	0.807
H	5.078	1.494	3.98	1.375	1.323	0.323	0.159	0.288	0.342	0.439	1.087	0.841
J	5.986	1.761	3.98	1.375	1.390	0.390	0.171	0.350	0.398	0.446	1.097	0.879
K	6.755	1.987	3.98	1.375	1.447	0.447	0.181	0.406	0.446	0.452	1.103	0.911
DEEP HAT SECTIONS												
L	7.753	2.280	5.67	1.460	2.409	0.283	0.206	1.916	1.493	0.917	1.539	1.283
M	8.504	2.501	5.67	1.460	2.448	0.322	0.212	2.150	1.646	0.927	1.548	1.306
N	9.487	2.790	5.67	1.460	2.499	0.373	0.221	2.459	1.843	0.939	1.557	1.334
P	10.509	3.091	5.67	1.460	2.552	0.426	0.231	2.784	2.041	0.949	1.565	1.364
Q	11.704	3.442	5.67	1.460	2.614	0.488	0.241	3.169	2.268	0.959	1.573	1.397

JOIST DIMENSIONS AND PROPERTIES

GWS JOISTS

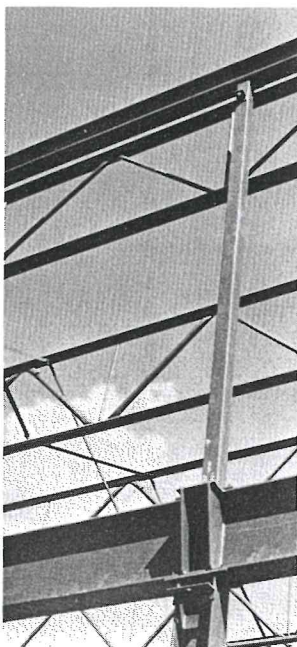
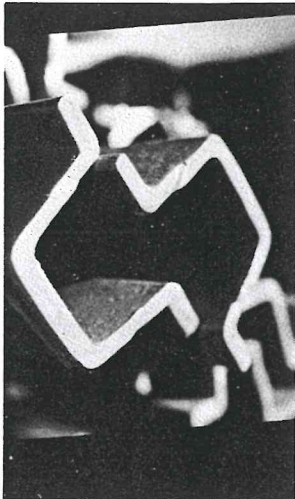
Joist Type	Nominal Depth in.	Chord Size		Interior Panel 'P' in.	Actual Depth in.	Space Between Chords in.	Moment of Inertia in. ⁴	Moment of Resistance (ft.-kips)
		Top	Btm					
12C	12	C	C	23.62	12.11	9.84	39.8	17.3
12D	12	D	C	23.62	12.14	9.84	44.7	20.6
12E	12	E	D	23.62	12.22	9.84	51.7	24.5
12F	12	F	E	23.62	12.26	9.84	62.0	29.1
12G	12	G	F	23.62	12.32	9.84	74.9	35.0
12H	12	H	G	23.62	12.43	9.84	90.2	41.9
12J	12	J	H	23.62	12.55	9.84	108.0	50.0
12K	12	K	J	23.62	12.68	9.84	126.3	57.0
14C	14	C	C	23.62	14.09	11.81	55.2	20.3
14D	14	D	C	23.62	14.11	11.81	60.0	24.3
14E	14	E	D	23.62	14.19	11.81	71.5	28.8
14F	14	F	E	23.62	14.23	11.81	85.5	34.2
14G	14	G	F	23.62	14.29	11.81	103.0	41.0
14H	14	H	G	23.62	14.40	11.81	123.8	49.2
14J	14	J	H	23.62	14.52	11.81	147.9	58.6
14K	14	K	J	23.62	14.65	11.81	172.7	66.7
16C	16	C	C	23.62	16.05	13.78	72.8	23.4
16D	16	D	C	23.62	16.08	13.78	79.4	27.9
16E	16	E	D	23.62	16.16	13.78	94.4	33.1
16F	16	F	E	23.62	16.20	13.78	112.7	39.2
16G	16	G	F	23.62	16.26	13.78	135.6	47.1
16H	16	H	G	23.62	16.37	13.78	162.7	56.4
16J	16	J	H	23.62	16.49	13.78	194.2	67.1
16K	16	K	J	23.62	16.62	13.78	226.4	76.4
18C	18	C	C	23.62	18.03	15.75	93.2	26.4
18D	18	D	C	23.62	18.06	15.75	101.4	31.5
18E	18	E	D	23.62	18.14	15.75	120.5	37.4
18F	18	F	E	23.62	18.18	15.75	143.7	44.3
18G	18	G	F	23.62	18.24	15.75	172.6	53.1
18H	18	H	G	23.62	18.35	15.75	206.9	63.6
18J	18	J	H	23.62	18.47	15.75	246.7	75.6
18K	18	K	J	23.62	18.60	15.75	287.3	86.0
20C	20	C	C	23.62	20.00	17.72	115.8	29.4
20D	20	D	C	23.62	20.03	17.72	126.1	35.2
20E	20	E	D	23.62	20.11	17.72	149.7	41.7
20F	20	F	E	23.62	20.15	17.72	178.2	49.4
20G	20	G	F	23.62	20.21	17.72	214.1	59.1
20H	20	H	G	23.62	20.32	17.72	256.2	70.7
20J	20	J	H	23.62	20.44	17.72	305.4	84.1
20K	20	K	J	23.62	20.57	17.72	355.1	95.6
22C	22	C	C	23.62	21.95	19.69	140.9	32.5
22D	22	D	C	23.62	21.98	19.69	153.3	38.8
22E	22	E	D	23.62	22.06	19.69	162.2	46.0
22F	22	F	E	23.62	22.10	19.69	216.7	54.4
22G	22	G	F	23.62	22.16	19.69	259.8	65.2
22H	22	H	G	23.62	22.27	19.69	311.0	77.9
22J	22	J	H	23.62	22.39	19.69	370.8	92.7
22K	22	K	J	23.62	22.52	19.69	430.3	105.3
24C	24	C	C	23.62	23.92	21.65	165.7	35.5
24D	24	D	C	23.62	23.95	21.65	183.4	42.4
24E	24	E	D	23.62	24.02	21.65	217.6	50.2
24F	24	F	E	23.62	24.07	21.65	258.7	59.5
24G	24	G	F	23.62	24.13	21.65	311.2	71.3
24H	24	H	G	23.62	24.25	21.65	371.1	85.1
24J	24	J	H	23.62	24.37	21.65	441.4	101.2
24K	24	K	J	23.62	24.50	21.65	513.0	114.9

The first numbers indicate the nominal depth of the joist in inches. The letter which follows indicates the top chord size.



JOIST DIMENSIONS AND PROPERTIES

GWS JOISTS

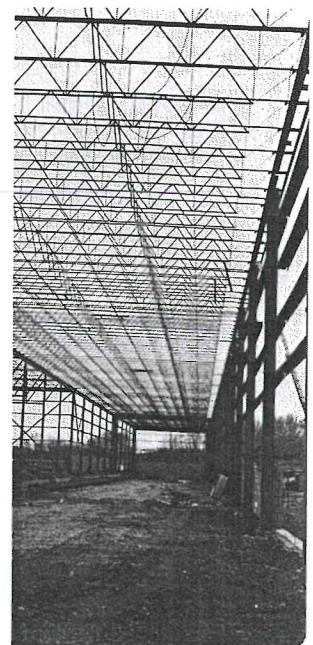


Joist Type	Nominal Depth	Chord Size		Interior Panel 'P'	Actual Depth	Space Between Chords	Moment of Inertia in. ⁴	Moment of Resistance (ft.-kips)
	in.	Top	Btm	in.	in.	in.		
26C	26	C	C	23.62	25.89	23.62	198.7	38.6
26D	26	D	C	23.62	25.92	23.62	216.2	46.1
26E	26	E	D	23.62	26.00	23.62	256.4	54.5
26F	26	F	E	23.62	26.04	23.62	304.8	64.5
26G	26	G	F	23.62	26.10	23.62	365.0	77.2
26H	26	H	G	23.62	26.22	23.62	436.5	92.3
26J	26	J	H	23.62	26.33	23.62	519.0	109.7
26K	26	K	J	23.62	26.46	23.62	602.9	124.6
28C	28	C	C	23.62	27.85	25.59	231.2	41.6
28D	28	D	C	23.62	27.89	25.59	251.6	49.7
28E	28	E	D	23.62	27.97	25.59	298.4	58.5
28F	28	F	E	23.62	28.01	25.59	354.5	69.6
28G	28	G	F	23.62	28.07	25.59	424.3	83.3
28H	28	H	G	23.62	28.19	25.59	507.2	99.5
28J	28	J	H	23.62	28.31	25.59	602.8	118.2
28K	28	K	J	23.62	28.42	25.59	700.0	134.3
30C	30	C	C	23.62	29.84	27.56	266.5	44.6
30D	30	D	C	23.62	29.86	27.56	289.8	53.3
30E	30	E	D	23.62	29.94	27.56	343.5	63.1
30F	30	F	E	23.62	29.98	27.56	408.0	74.7
30G	30	G	F	23.62	30.04	27.56	488.0	89.3
30H	30	H	G	23.62	30.16	27.56	583.2	106.7
30J	30	J	H	23.62	30.28	27.56	692.9	126.7
30K	30	K	J	23.62	30.39	27.56	804.4	143.9
32C	32	C	C	23.62	31.81	29.53	303.8	47.7
32D	32	D	C	23.62	31.83	29.53	330.6	57.0
32E	32	E	D	23.62	31.91	29.53	391.8	67.4
32F	32	F	E	23.62	31.96	29.53	465.2	79.7
32G	32	G	F	23.62	32.00	29.53	556.3	95.3
32H	32	H	G	23.62	32.12	29.53	664.9	113.9
32J	32	J	H	23.62	32.24	29.53	789.3	135.3
32K	32	K	J	23.62	32.36	29.53	916.0	153.6
34C	34	C	C	23.62	33.76	31.49	344.1	50.7
34D	34	D	C	23.62	33.80	31.49	374.1	60.6
34E	34	E	D	23.62	33.88	31.49	443.3	71.7
34F	34	F	E	23.62	33.92	31.49	525.8	84.8
34G	34	G	F	23.62	33.98	31.49	629.0	101.4
34H	34	H	G	23.62	34.09	31.49	750.7	121.1
34J	34	J	H	23.62	34.21	31.49	891.4	143.8
34K	34	K	J	23.62	34.33	31.49	1034.2	163.2
36C	36	C	C	23.62	35.73	33.46	386.5	53.8
36D	36	D	C	23.62	35.76	33.46	420.1	64.2
36E	36	E	D	23.62	35.83	33.46	497.7	76.0
36F	36	F	E	23.62	35.88	33.46	590.5	89.8
36G	36	G	F	23.62	35.95	33.46	706.1	107.4
36H	36	H	G	23.62	36.06	33.46	842.6	128.3
36J	36	J	H	23.62	36.18	33.46	1000.3	152.3
36K	36	K	J	23.62	36.30	33.46	1160.3	172.8
36L	36	L	L	47.24	36.30	31.49	1330	176.9
36M	36	M	L	47.24	36.34	31.49	1380	196.6
36N	36	N	L	47.24	36.42	31.49	1470	221.8
36P	36	P	M	47.24	36.50	31.49	1630	247.7
36Q	36	Q	N	47.24	36.61	31.49	1960	287.2
38C	38	C	C	23.62	37.70	35.43	431.3	56.8
38D	38	D	C	23.62	37.73	35.43	469.0	67.9
38E	38	E	D	23.62	37.80	35.43	555.5	80.3
38F	38	F	D	23.62	37.85	35.43	659.0	94.9

JOIST DIMENSIONS AND PROPERTIES

Joist Type	Nominal Depth	Chord Size		Interior Panel 'P'	Actual Depth	Space Between Chords	Moment of Inertia	Moment of Resistance
		Top	Btm					
	in.			in.	in.	in.	in. ⁴	(ft.-kips)
38G	38	G	F	23.62	37.91	35.43	787.3	113.6
38H	38	H	G	23.62	38.03	35.43	939.8	135.5
38J	38	J	H	23.62	38.13	35.43	1115.5	160.8
38K	38	K	J	23.62	38.26	35.43	1293.6	182.5
40C	40	C	C	23.62	39.68	37.40	479.0	59.9
40D	40	D	C	23.62	39.70	37.40	520.6	71.5
40E	40	E	D	23.62	39.78	37.40	616.6	84.6
40F	40	F	E	23.62	39.82	37.40	731.2	100.0
40G	40	G	F	23.62	39.88	37.40	873.4	119.5
40H	40	H	G	23.62	40.00	37.40	1042.3	142.7
40J	40	J	H	23.62	40.12	37.40	1236.7	169.7
40K	40	K	J	23.62	40.24	37.40	1434.2	192.2
42C	42	C	C	23.62	41.65	39.37	529.2	62.9
42D	42	D	C	23.62	41.67	39.37	574.9	75.2
42E	42	E	D	23.62	41.75	39.37	680.8	88.9
42F	42	F	E	23.62	41.79	39.37	807.2	105.0
42G	42	G	F	23.62	41.85	39.37	963.9	125.5
42H	42	H	G	23.62	41.97	39.37	1150.1	149.9
42J	42	J	H	23.62	42.09	39.37	1364.7	177.9
42K	42	K	J	23.62	42.20	39.37	1582.0	201.8
42L	42	L	L	47.24	42.20	37.40	1820	207.5
42M	42	M	L	47.24	42.24	37.40	1910	230.6
42N	42	N	L	47.24	42.32	37.40	2020	260.2
42P	42	P	M	47.24	42.40	37.40	2240	290.5
42Q	42	Q	N	47.24	42.52	37.40	2660	335.0
48L	48	L	L	47.24	48.11	43.30	2400	238.1
48M	48	M	L	47.24	48.15	43.30	2520	264.6
48N	48	N	L	47.24	48.23	43.30	2670	298.5
48P	48	P	M	47.24	48.31	43.30	2940	333.3
48Q	48	Q	N	47.24	48.43	43.30	3470	382.7
54L	54	L	L	47.24	54.01	49.21	3060	268.8
54M	54	M	L	47.24	54.05	49.21	3200	298.7
54N	54	N	L	47.24	54.13	49.21	3390	336.9
54P	54	P	M	47.24	54.21	49.21	3750	376.1
54Q	54	Q	N	47.24	54.33	49.21	4390	430.5
60L	60	L	L	47.24	59.92	55.11	3800	299.5
60M	60	M	L	47.24	59.96	55.11	3980	332.8
60N	60	N	L	47.24	60.04	55.11	4210	375.3
60P	60	P	M	47.24	60.12	55.11	4650	419.0
60Q	60	Q	N	47.24	60.24	55.11	5420	478.4
72L	72	L	L	47.24	71.73	66.93	5510	360.8
72M	72	M	L	47.24	71.77	66.93	5770	400.9
72N	72	N	L	47.24	71.85	66.93	6110	452.1
72P	72	P	M	47.24	71.93	66.93	6740	504.6
72Q	72	Q	N	47.24	72.05	66.93	7800	573.9

NOTE: Moment capacity for 47.24 in interior panels 'P' is based on a bending UDL of 500 plf.



Deflection

The joist design is based upon the AISC "Specification for the Design, Fabrication and Erection of Structural Steel for Buildings."

The deflection of the joist is calculated from the following adjusted simple span beam formula:

$$\text{Deflection in inches} = (1.10) \frac{5wL^4}{384EI} (1728)$$

Where 1.10 = Correction factor
 w = Uniform load in pounds per linear foot of joist
 L = Design span in feet (approximately = clear span + 4 inches)
 E = 29,000,000 pounds per square inch
 I = Moment of inertia of the joist in.⁴ (see joist prop.)
 1728 = Dimensional constant

Camber

Great West Steel Joists are fabricated with the following nominal cambers:

Span ft.	Camber For Short & Intermediate Joists	Camber For Long Span Joists
10	1/8"	—
20	1/4"	—
30	3/8"	—
40	3/4"	—
50	1 1/8"	5/8"
60	1 1/2"	7/8"
70	2"	1 1/4"
80	—	1 1/2"
90	—	2"
100	—	2 1/2"
110	—	3"
120	—	3 1/2"

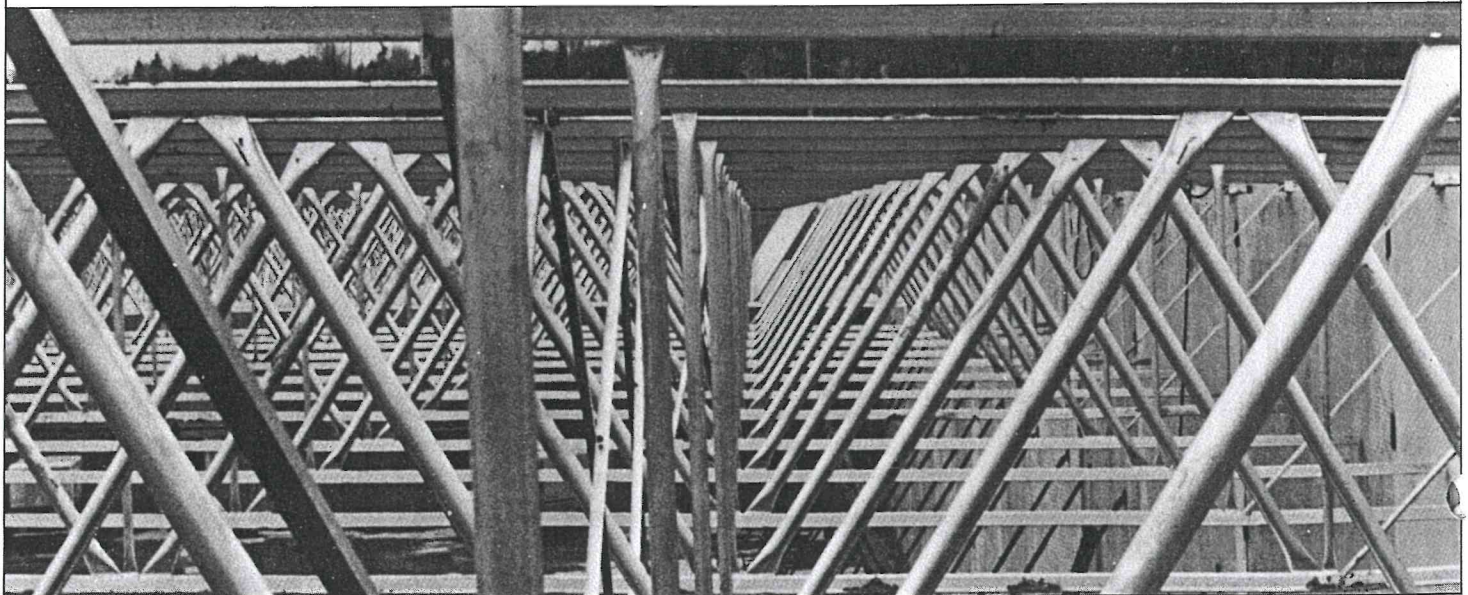
Bridging

Bridging is normally used to stabilize and align joists during construction. Two types of bridging are permitted: diagonal or horizontal.

Normally diagonal bridging is used for joists over 40 feet in length.

Maximum spacing: 170ryy along compression chord and 240ryy along tension chord.

	C	D	E	F	G	H	J	K
170ryy	11'9"	12'1"	12'3"	15'1"	15'3"	15'5"	15'6"	15'7"
240ryy	16'9"	17'1"	17'3"	21'3"	21'6"	21'9"	21'10"	22'1"
Section	L	M	N	P	Q			
170ryy	21'9"	21'10"	22'1"	22'2"	22'3"			
240ryy	30'9"	30'11"	31'1"	31'4"	31'5"			



The joists shown in the following Joist Selection Tables are the most frequently used joists only. A much larger and varied range of joists can be supplied, including specially designed joists to suit specific requirements.

First Column	In the tables, the first column designates the joist type, which is coded by nominal depth (in.) followed by a letter indicating the top chord size.
Second Column	The second column indicates the approximate weight of the joists in pounds per foot.
Third Column	The capacity (pounds per foot — uniform distribution) is shown in the third column.
Fourth Column	The Live Load capacity governed by a deflection limitation of Span/360 is shown in the last column (pounds per foot — uniform distribution). The Live Load capacity governed by a deflection limitation of Span/240 may be obtained by multiplying this figure by 1.5.

The joist capacities in these tables are designed in accordance with AISC specifications.

METHOD OF JOIST SELECTION

Compute the uniformly distributed load as follows:

D = Dead Load (pounds per sq. ft.)

L = Live Load (pounds per sq. ft.)

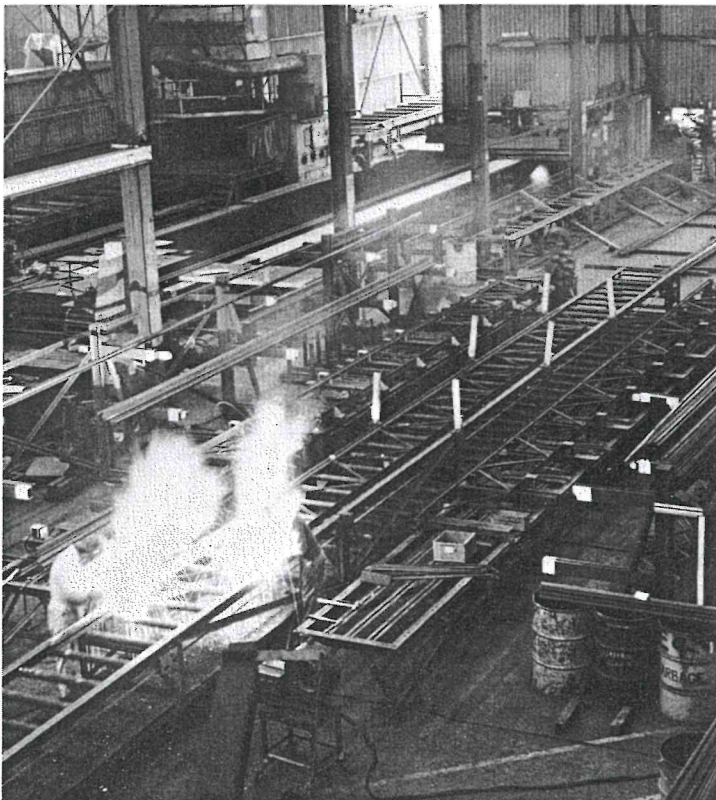
S = Joist Spacing (ft.)

For strength, select a joist from the Joist Selection Tables such that the tabulated Capacity exceeds the computed load per foot $(D + L) \times S$. For serviceability, ensure that the Live Load Capacity for the appropriate deflection limitation exceeds the computed Live Load. Note that the tabulated Capacity is for a strict deflection limitation of Span/360. If more deflection does not affect serviceability increase the Capacity accordingly. For example the Capacity for a limitation of Span/240 is $360/240 = 1.5$ times the tabulated Capacity.

Joists with non-uniform loads and/or additional point loads may be sized according to the Joist Dimensions and Properties Table. Select an appropriate Moment of Resistance for strength and a suitable Moment of Inertia for serviceability.

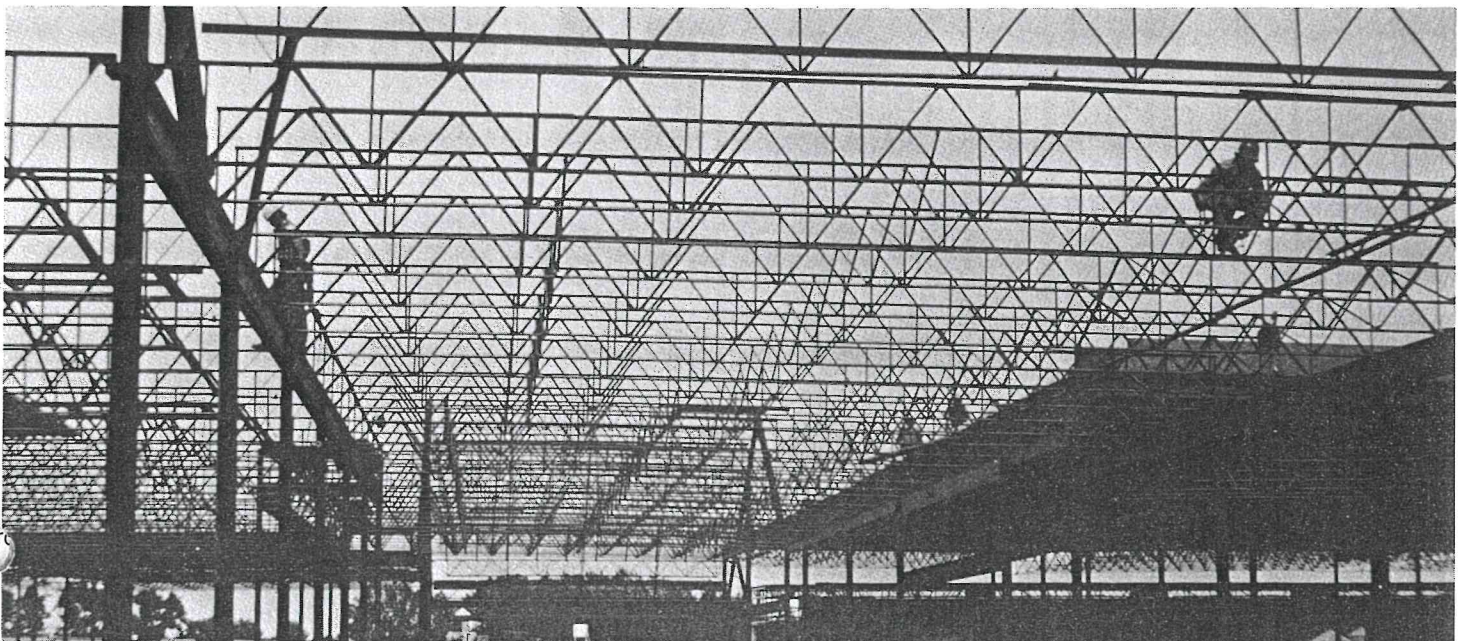
JOIST SELECTION TABLES

CAPACITY				CAPACITY				CAPACITY				CAPACITY			
Joist Type	Joist WT	Total Load	Live Load $\Delta = \frac{1}{360}$	Joist Type	Joist WT	Total Load	Live Load $\Delta = \frac{1}{360}$	Joist Type	Joist WT	Total Load	Live Load $\Delta = \frac{1}{360}$	Joist Type	Joist WT	Total Load	Live Load $\Delta = \frac{1}{360}$
	lb/ft.	plf.	plf.		lb/ft.	plf.	plf.		lb/ft.	plf.	plf.		lb/ft.	plf.	plf.
13 feet				14 feet				15 feet				16 feet			
12C	6.85	779	656	12C	6.85	674	528	12C	6.85	589	431	12C	6.85	519	357
14C	6.85	913	910	14C	6.85	790	732	14C	6.85	691	598	12D	7.26	618	400
16C	6.85	1053	1053	16C	8.06	911	911	16C	8.06	796	789	14C	6.85	609	495
								18C	6.78	898	898	14D	7.26	729	538
												16C	6.85	702	653
												18C	6.72	792	836
												18D	7.40	947	909
17 feet				18 feet				19 feet				20 feet			
12C	6.85	460	299	12C	6.85	412	252	12C	6.85	370	215	12C	6.85	335	185
12D	7.26	548	335	12D	7.26	490	283	12D	7.26	441	242	12D	7.26	399	208
14C	6.85	540	414	12E	8.06	583	328	12E	8.06	524	279	12E	8.06	474	240
14D	7.26	647	450	14C	6.85	483	350	14C	6.85	434	298	12F	9.00	563	288
16C	6.85	623	546	14D	7.25	578	380	14D	7.25	520	324	14C	6.85	393	256
18C	6.72	703	699	16C	6.85	557	461	16C	6.85	501	393	14D	7.26	470	278
18D	7.40	841	760	16D	7.26	664	503	16D	7.26	597	429	14E	8.06	557	332
20C	6.99	783	783	16E	7.72	788	598	16E	7.72	708	510	16C	6.85	453	338
22C	7.19	866	866	18C	6.58	628	591	18C	6.58	565	503	16D	7.26	540	369
				18D	7.26	751	643	18D	7.26	675	548	18C	6.52	511	433
				20C	6.85	700	734	20C	6.85	629	626	18D	7.19	610	471
				20D	7.46	838	799	20D	7.46	754	681	18E	8.13	723	560
				22C	7.06	774	774	22C	7.06	696	696	18F	9.34	857	668
				24C	7.26	845	845	24C	7.26	760	760	20C	6.78	569	538
												20D	7.32	681	586
												20E	8.20	807	695
												22C	6.99	629	655
												22D	7.39	751	712
												22E	8.74	890	846
												24C	7.19	687	784
												24D	7.79	820	820



JOIST SELECTION TABLES

Joist Type	Joist WT	CAPACITY		Joist Type	Joist WT	CAPACITY		Joist Type	Joist WT	CAPACITY		Joist Type	Joist WT	CAPACITY	
		Total Load	Live Load $\Delta = \frac{1}{360}$			Total Load	Live Load $\Delta = \frac{1}{360}$			Total Load	Live Load $\Delta = \frac{1}{360}$			Total Load	Live Load $\Delta = \frac{1}{360}$
	lb/ft.	plf.	plf.		lb/ft.	plf.	plf.		lb/ft.	plf.	plf.		lb/ft.	plf.	plf.
21 feet				22 feet				23 feet				24 feet			
12C	6.85	304	160	12C	6.85	277	140	12C	6.85	254	122	12C	6.85	234	108
12D	7.26	362	180	12D	7.26	330	156	12D	7.26	303	137	12D	7.26	278	121
12E	8.06	430	208	12E	8.06	393	181	12E	8.06	360	159	12E	8.06	331	140
12F	9.00	511	250	12F	9.00	467	217	12F	9.00	428	190	12F	9.00	393	168
14C	6.85	357	222	14C	6.85	325	193	14C	6.85	298	170	14C	6.85	274	149
14D	7.26	427	240	14D	7.26	390	210	14D	7.26	357	184	14D	7.26	328	162
14E	8.06	506	288	14E	8.06	462	250	14E	8.06	424	220	14E	8.06	389	193
16C	6.85	411	293	16C	6.85	375	255	16C	6.85	344	224	16C	6.85	316	197
16D	7.26	490	320	16D	7.26	447	278	16D	7.26	410	244	16D	7.26	377	215
18C	6.45	464	375	18C	6.45	423	326	16E	8.06	486	290	16E	8.06	447	255
18D	7.06	555	408	18D	7.06	506	355	18C	6.31	388	286	18C	6.31	356	252
18E	7.99	657	485	18E	7.99	600	422	18D	6.92	464	312	18D	6.92	426	275
18F	9.20	779	578	18F	9.20	711	504	18E	7.86	549	370	18E	7.86	505	326
18G	10.89	934	695	18G	10.89	852	605	18F	9.00	651	442	18F	9.00	599	389
20C	6.65	517	466	20C	6.65	471	406	18G	10.62	780	530	18G	10.62	717	467
20D	7.26	619	507	20D	7.26	565	442	20C	6.58	432	356	20C	6.58	397	313
20E	8.06	733	602	20E	8.06	669	525	20D	7.12	517	388	20D	7.12	476	342
20F	9.54	868	717	20F	9.54	792	625	20E	7.93	613	460	20E	7.93	563	405
22C	6.92	571	567	22C	6.92	521	494	20F	9.40	726	548	20F	9.40	667	483
22D	7.32	682	617	22D	7.32	622	538	20G	10.75	868	658	20G	10.75	799	580
22E	8.60	899	733	22E	8.60	738	639	22C	6.78	477	432	22C	6.78	439	380
22F	9.67	956	872	22F	9.67	873	760	22D	7.26	570	471	22D	7.26	524	415
24C	7.06	624	678	24C	7.06	569	592	22E	8.46	676	560	22E	8.46	621	493
24D	7.66	745	738	24D	7.66	680	643	22F	9.47	799	666	22F	9.47	735	587
24E	8.60	882	875	24E	8.60	805	763	24C	6.99	521	519	24C	6.99	480	457
								24D	7.59	623	564	24D	7.59	573	497
								24E	8.53	737	669	24E	8.53	678	589
								24F	9.54	874	796	24F	9.54	804	702



JOIST SELECTION TABLES

Joist Type	Joist WT	CAPACITY		Joist Type	Joist WT	CAPACITY		Joist Type	Joist WT	CAPACITY		Joist Type	Joist WT	CAPACITY	
		Total Load	Live Load $\Delta = 1/360$			Total Load	Live Load $\Delta = 1/360$			Total Load	Live Load $\Delta = 1/360$			Total Load	Live Load $\Delta = 1/360$
	lb/ft.	plf.	plf.		lb/ft.	plf.	plf.		lb/ft.	plf.	plf.		lb/ft.	plf.	plf.
25 feet				26 feet				27 feet				28 feet			
14C	6.85	253	133	14C	6.85	234	118	14C	6.85	217	106	16C	6.85	233	125
14D	7.26	303	144	14D	7.26	280	128	14D	7.26	260	115	16D	7.26	278	136
14E	8.06	359	172	14E	8.06	332	153	14E	8.06	308	137	16E	8.06	330	162
14F	9.00	426	205	14F	9.00	395	183	14F	9.00	366	163	18C	6.05	263	160
16C	6.85	292	175	16C	6.85	270	156	16C	6.85	250	139	18D	6.52	314	174
16D	7.26	348	191	16D	7.26	322	170	16D	7.26	299	152	18E	7.46	372	207
16E	8.06	413	227	16E	8.06	382	202	16E	8.06	354	181	18F	8.53	442	247
18C	6.25	329	224	18C	6.18	305	199	18C	6.18	283	178	18G	10.08	529	296
18D	6.78	393	244	18D	6.65	364	217	18D	6.65	338	194	18H	11.56	633	355
18E	7.73	466	289	18E	7.59	431	258	18E	7.59	400	230	18J	13.57	754	424
18F	8.87	552	345	18F	8.69	511	307	18F	8.69	474	275	20C	6.25	293	199
18G	10.48	662	415	18G	10.28	613	369	18G	10.28	569	330	20D	6.78	350	216
18H	11.96	792	497	18H	11.76	733	424	18H	11.76	680	396	20E	7.59	415	257
20C	6.45	366	278	20C	6.38	339	248	20C	6.38	315	221	20F	8.87	492	306
20D	6.99	439	303	20D	6.92	406	270	20D	6.92	377	241	20G	10.21	589	368
20E	7.79	520	360	20E	7.73	481	320	20E	7.73	446	286	20H	12.10	705	440
20F	9.20	616	428	20F	9.00	570	381	20F	9.00	529	341	22C	6.52	324	242
20G	10.62	737	514	20G	10.41	682	458	20G	10.41	633	409	22D	6.99	386	263
22C	6.72	405	338	20H	12.36	816	548	20H	12.36	757	490	22E	8.06	458	313
22D	7.19	484	368	22C	6.58	375	301	22C	6.58	348	269	22F	9.14	542	372
22E	8.33	573	438	22D	7.06	448	328	22D	7.06	415	293	22G	10.48	650	446
22F	9.34	678	520	22E	8.20	531	390	22E	8.20	492	348	22H	12.36	776	534
22G	10.75	813	624	22F	9.27	628	463	22F	9.27	582	414	24C	6.72	354	290
24C	6.92	442	405	22G	10.61	752	556	22G	10.61	698	497	24D	7.32	422	315
24D	7.53	528	440	22H	12.50	899	665	22H	12.50	834	595	24E	8.26	500	374
24E	8.40	626	523	24C	6.85	410	361	24C	6.85	380	323	24F	9.27	593	444
24F	9.40	742	622	24D	7.46	489	392	24D	7.46	454	351	24G	10.82	710	534
				24E	8.33	579	465	24E	8.33	537	416	24H	12.63	848	637
				24F	9.34	686	554	24F	9.34	637	495	26C	6.72	385	341
				26C	6.85	445	425	26C	6.85	413	380	26D	7.59	459	371
				26D	7.66	532	462	26D	7.66	494	413	26E	8.40	543	440
				26E	8.53	629	548	26E	8.53	584	490	26F	9.54	643	523
				26F	9.61	744	652	26F	9.61	690	583	26G	11.09	769	627
				26G	11.22	890	781	26G	11.22	826	698	26H	13.10	920	749
				28C	6.99	480	494	28C	6.99	445	442	28C	6.92	415	397
				28D	7.79	573	538	28D	7.79	532	481	28D	7.73	495	432
				28E	8.53	678	638	28E	8.53	630	571	28E	8.47	586	512
				28F	10.08	803	758	28F	10.08	745	678	28F	9.94	674	609
												28G	11.22	830	728
												30C	7.12	444	444
												30D	7.73	531	498
												30E	8.87	629	590
												30F	10.08	744	700
												30G	11.69	890	838

JOIST SELECTION TABLES

Joist Type	Joist WT	CAPACITY		Joist Type	Joist WT	CAPACITY		Joist Type	Joist WT	CAPACITY		Joist Type	Joist WT	CAPACITY	
		Total Load	Live Load $\Delta = \frac{1}{360}$			Total Load	Live Load $\Delta = \frac{1}{360}$			Total Load	Live Load $\Delta = \frac{1}{360}$			Total Load	Live Load $\Delta = \frac{1}{360}$
	lb/ft.	plf.	plf.		lb/ft.	plf.	plf.		lb/ft.	plf.	plf.		lb/ft.	plf.	plf.
29 feet				30 feet				31 feet				32 feet			
16C	6.85	218	112	18C	5.98	229	130	18C	5.91	215	118	20C	5.98	295	135
16D	7.26	259	122	18D	6.45	274	192	18D	6.32	257	128	20D	6.45	269	146
16E	8.06	308	146	18E	7.39	325	168	18E	7.26	305	152	20E	7.25	319	173
18C	6.05	215	144	18F	8.40	385	200	18F	8.26	341	181	20F	8.33	370	206
18D	6.52	293	157	18G	9.88	462	240	18G	9.67	433	217	20G	9.67	452	246
18E	7.46	347	186	18H	11.35	553	289	18H	11.15	518	262	20H	11.49	591	295
18F	8.53	412	222	18J	13.37	658	345	18J	13.17	616	313	20J	13.64	644	353
18G	10.08	494	266	18K	15.46	748	402	18K	15.18	701	364	20K	15.32	732	410
18H	11.56	591	320	20C	6.18	255	162	20C	6.05	240	147	22C	6.18	249	163
18J	13.57	703	382	20D	6.72	306	176	20D	6.58	287	159	22D	6.65	297	177
20C	6.25	273	179	20E	7.46	362	208	20E	7.32	340	190	22E	7.66	352	210
20D	6.79	327	195	20F	8.67	430	249	20F	8.53	403	226	22F	8.74	416	250
20E	7.59	388	231	20G	10.08	514	299	20G	9.88	482	271	22G	10.08	499	300
20F	8.87	459	276	20H	11.89	615	358	20H	11.59	576	324	22H	11.89	596	359
20G	10.21	550	331	22C	6.38	282	196	22C	6.32	265	177	22J	13.84	709	428
20H	12.10	657	396	22D	6.85	337	214	22D	6.78	316	194	24C	6.45	272	195
22C	6.52	302	217	22E	7.93	400	255	22E	7.79	375	231	24D	7.06	324	212
22D	6.99	360	237	22F	9.00	473	303	22F	8.87	443	275	24E	7.93	384	251
22E	8.06	428	282	22G	10.35	567	363	22G	10.21	531	329	24F	8.94	455	299
22F	9.14	506	335	22H	12.23	677	435	22H	12.03	635	395	24G	10.48	546	360
22G	10.48	606	402	24C	6.65	308	236	24C	6.52	289	214	24H	12.23	651	429
22H	12.36	724	481	24D	7.26	368	256	24D	7.12	345	232	24J	14.18	774	510
24C	6.72	330	261	24E	8.13	436	303	24E	8.06	409	275	26C	6.52	295	230
24D	7.32	394	284	24F	9.14	517	361	24F	9.07	485	327	26D	7.39	353	250
24E	8.26	467	336	24G	10.68	620	435	24G	10.61	581	395	26E	8.20	417	295
24F	9.27	553	400	24H	12.50	740	519	24H	12.36	693	470	26F	9.27	494	352
24G	10.82	663	481	26C	6.65	335	277	26C	6.58	314	251	26G	10.82	590	422
24H	12.63	791	574	26D	7.52	401	303	26D	7.46	376	275	26H	12.63	706	504
26C	6.72	359	307	26E	8.33	474	359	26E	8.26	444	325	26J	14.78	840	600
26D	7.59	428	335	26F	9.47	561	426	26F	9.34	526	386	28C	6.78	318	267
26E	8.40	507	397	26G	11.02	671	510	26G	10.88	629	462	28D	7.52	380	294
26F	9.54	600	472	26H	12.97	802	610	26H	12.77	752	553	28E	8.33	450	345
26G	11.09	718	565	28C	6.92	362	322	28C	6.85	339	292	28F	9.74	533	410
28C	6.92	387	357	28D	7.66	432	351	28D	7.59	405	318	28G	11.02	637	489
28D	7.73	462	389	28E	8.47	511	418	28E	8.40	479	379	28H	12.63	761	586
28E	8.47	547	462	28F	9.88	605	495	28F	9.81	567	449	30C	6.92	341	308
28F	9.74	647	548	28G	11.15	724	593	28G	11.09	679	538	30D	7.59	408	335
28G	11.22	775	656	30C	7.06	388	372	30C	6.79	363	337	30E	8.60	483	397
30C	7.12	415	412	30D	7.66	463	405	30D	7.59	434	367	30F	9.81	572	478
30D	7.73	496	448	30E	8.50	548	481	30E	8.67	514	436	30G	11.42	689	564
30E	8.87	587	532	30F	10.01	650	570	30F	9.88	609	517	30H	12.97	816	674
30F	10.08	695	631	30G	11.62	776	682	30G	11.56	728	618	32C	7.19	365	351
				32C	7.32	415	425	32C	7.26	389	385	32D	7.66	436	382
				32D	7.79	496	463	32D	7.73	464	420	32E	8.74	516	453
				32E	8.87	586	548	32E	8.80	549	497	32F	10.15	610	537
				32F	10.34	693	651	32F	10.28	649	590	32G	11.83	729	643
								32G	11.96	777	706				

JOIST SELECTION TABLES

Joist Type	Joist WT	CAPACITY		Joist Type	Joist WT	CAPACITY		Joist Type	Joist WT	CAPACITY		Joist Type	Joist WT	CAPACITY	
		Total Load	Live Load $\Delta = \frac{1}{360}$			Total Load	Live Load $\Delta = \frac{1}{360}$			Total Load	Live Load $\Delta = \frac{1}{360}$			Total Load	Live Load $\Delta = \frac{1}{360}$
	lb/ft.	plf.	plf.		lb/ft.	plf.	plf.		lb/ft.	plf.	plf.		lb/ft.	plf.	plf.
33 feet				34 feet				35 feet				36 feet			
20C	5.98	212	122	20C	5.85	199	112	20C	5.85	188	102	20C	5.85	178	94
20D	6.45	253	133	20D	6.32	238	122	20D	6.32	285	112	20D	6.32	213	103
20E	7.26	300	158	20E	7.12	282	144	20E	7.12	267	132	20E	7.12	252	121
20F	8.33	356	188	20F	8.20	335	172	20F	8.20	316	158	20F	8.20	300	145
20G	9.67	425	226	20G	9.54	400	207	20G	9.54	378	190	20G	9.54	357	174
20H	11.49	509	270	20H	11.29	479	247	20H	11.29	453	227	20H	11.29	428	208
20J	13.64	605	322	20J	13.44	570	295	20J	13.44	539	270	20J	13.44	509	248
20K	15.32	688	374	20K	15.12	648	343	20K	15.12	612	314	20K	15.12	529	288
22C	6.18	234	149	22C	6.12	220	136	22C	6.11	208	125	22C	5.98	197	115
22D	6.65	279	162	22D	6.59	262	148	22D	6.58	248	136	22D	6.45	235	125
22E	7.66	331	192	22E	7.53	312	176	22E	7.53	294	161	22E	7.39	278	148
22F	8.74	392	228	22F	8.60	369	209	22F	8.60	348	192	22F	8.47	329	176
22G	10.08	469	274	22G	9.95	442	251	22G	9.94	417	230	22G	9.81	395	211
22H	11.89	561	328	22H	11.76	528	300	22H	11.76	499	275	22H	11.63	472	253
22J	13.84	667	391	22J	13.71	678	358	22J	13.70	593	328	22J	13.57	561	301
24C	6.45	255	178	24C	6.32	240	163	24C	6.32	227	149	24C	6.25	214	137
24D	7.06	305	193	24D	6.99	287	177	24D	6.99	271	162	24D	6.92	256	149
24E	7.93	361	229	24E	7.86	340	210	24E	7.86	321	193	24E	7.80	304	177
24F	8.94	428	273	24F	8.87	403	250	24F	8.87	381	229	24F	8.80	360	210
24G	10.48	513	328	24G	10.42	483	300	24G	10.42	456	275	24G	10.35	431	253
24H	12.23	613	391	24H	12.10	577	358	24H	12.10	545	329	24H	11.96	516	302
24J	14.18	729	465	24J	14.05	687	426	24J	14.04	649	390	24J	13.84	613	358
26C	6.52	278	209	26C	6.52	262	192	26C	6.52	247	176	26C	6.45	234	162
26D	7.39	332	228	26D	7.33	312	209	26D	7.32	295	191	26D	7.26	279	176
26E	8.20	392	270	26E	8.13	369	247	26E	8.13	349	227	26E	8.00	330	208
26F	9.27	464	321	26F	9.21	437	294	26F	9.20	413	270	26F	9.07	390	248
26G	10.82	556	385	26G	10.75	524	352	26G	10.75	495	323	26G	10.68	468	297
26H	12.63	665	460	26H	12.50	626	421	26H	12.50	592	386	26H	12.36	560	355
26J	14.78	790	547	26J	14.65	744	501	26J	14.65	703	460	26J	14.45	665	423
28C	6.78	299	243	28C	6.79	281	223	28C	6.79	266	205	28C	6.72	251	188
28D	7.52	358	265	28D	7.46	337	243	28D	7.46	318	223	28D	7.39	301	205
28E	8.33	423	315	28E	8.27	398	288	28E	8.26	376	264	28E	8.20	356	242
28F	9.74	501	374	28F	9.68	472	342	28F	9.67	446	314	28F	9.61	421	288
28G	11.02	600	447	28G	10.89	565	409	28G	10.88	534	376	28G	10.82	505	345
28H	12.63	716	535	28H	12.50	674	489	28H	12.50	637	449	28H	12.43	602	413
30C	6.92	321	281	30C	6.92	302	257	30C	6.92	285	236	30C	6.85	270	217
30D	7.59	389	306	30D	7.53	361	280	30D	7.53	341	257	30D	6.79	323	236
30E	8.60	454	362	30E	8.53	427	331	30E	8.53	404	304	30E	8.47	382	279
30F	9.81	538	430	30F	9.74	507	394	30F	9.74	478	361	30F	9.68	453	332
30G	11.42	643	515	30G	11.36	606	471	30G	11.35	572	432	30G	11.29	541	397
30H	12.97	768	615	30H	12.84	723	563	30H	12.83	683	516	30H	12.77	646	474
32C	7.19	343	320	32C	7.19	323	293	32C	7.19	305	259	32C	7.12	288	247
32D	7.66	410	349	32D	7.66	386	319	32D	7.66	365	293	32D	7.59	345	269
32E	8.74	485	413	32E	8.67	457	378	32E	8.67	431	347	32E	8.60	408	319
32F	10.15	574	490	32F	10.08	541	449	32F	10.08	510	412	32F	10.01	483	378
32G	11.83	686	587	32G	11.76	646	537	32G	11.76	610	493	32G	11.69	577	453
32H				32H	13.37	772	642	32H	13.37	730	589	32H	13.31	690	541

JOIST SELECTION TABLES

Joist Type	Joist WT	CAPACITY		Joist Type	Joist WT	CAPACITY		Joist Type	Joist WT	CAPACITY		Joist Type	Joist WT	CAPACITY	
		Total Load	Live Load $\Delta = \frac{1}{360}$			Total Load	Live Load $\Delta = \frac{1}{360}$			Total Load	Live Load $\Delta = \frac{1}{360}$			Total Load	Live Load $\Delta = \frac{1}{360}$
	lb/ft.	plf.	plf.		lb/ft.	plf.	plf.		lb/ft.	plf.	plf.		lb/ft.	plf.	plf.
37 feet				38 feet				39 feet				40 feet			
20C	5.85	169	87	24C	6.18	193	117	24C	6.72	183	108	24D	6.72	208	109
20D	6.32	201	95	24D	6.78	231	127	24D	7.59	218	117	24E	7.39	246	128
20E	7.12	239	112	24E	7.66	273	150	24E	8.60	259	139	24F	8.60	292	154
20F	8.20	284	139	24F	8.66	324	179	24F	10.15	308	165	24G	10.15	350	185
20G	9.54	339	161	24G	10.21	388	215	24G	11.69	368	199	24H	11.69	418	220
20H	11.29	405	192	24H	11.83	463	257	24H	13.58	440	238	24J	13.57	498	262
20J	13.44	482	229	24J	13.70	551	306	24J	15.59	523	283	24K	15.59	565	305
20K	15.12	548	267	26C	6.38	210	138	26C	6.32	199	128	26C	6.31	190	118
22C	5.98	186	106	26D	7.19	251	150	26D	7.12	238	139	26D	7.12	226	129
22D	6.45	222	115	26E	7.93	296	178	26E	7.86	282	165	26E	7.86	267	153
22E	7.39	264	137	26F	9.00	351	211	26F	8.94	333	195	26F	8.94	317	181
22F	8.47	312	163	26G	10.55	420	253	26G	10.48	399	234	26G	10.48	379	217
22G	9.81	374	195	26H	12.23	502	302	26H	12.03	477	279	26H	12.03	453	259
22H	11.63	447	234	26J	14.31	597	360	26J	14.11	567	333	26J	14.11	539	309
22J	13.57	532	278	26K	15.99	678	418	26K	15.86	644	387	26K	15.86	612	359
24C	6.25	203	127	28C	6.72	226	160	28C	6.65	214	148	28C	6.65	204	137
24D	6.92	243	138	28D	7.39	270	174	28D	7.33	257	161	28D	7.32	244	149
24E	7.80	288	163	28E	8.20	320	207	28E	8.13	304	192	28E	8.13	289	178
24F	8.80	341	194	28F	9.54	379	246	28F	9.41	360	228	28F	9.40	342	211
24G	10.35	409	234	28G	10.75	453	294	28G	10.69	431	272	28G	10.68	409	252
24H	11.96	488	279	28H	12.36	542	352	28H	12.30	515	326	28H	12.30	489	302
24J	13.84	581	381	28J	14.71	644	418	28J	14.65	611	387	28J	14.65	581	359
26C	6.45	221	149	30C	6.78	243	185	30C	6.79	230	171	30C	6.78	219	159
26D	7.26	254	162	30D	7.39	290	200	30D	7.33	275	185	30D	7.32	262	172
26E	8.00	312	193	30E	8.40	343	238	30E	8.33	326	220	30E	8.33	310	204
26F	9.07	370	229	30F	9.61	406	283	30F	9.54	385	262	30F	9.54	366	243
26G	10.68	443	274	30G	11.15	486	338	30G	11.09	462	312	30G	11.09	439	290
26H	12.36	530	327	30H	12.70	581	404	30H	12.63	552	374	30H	12.63	525	346
26J	14.45	630	390	30J	14.92	690	480	30J	14.78	655	444	30J	14.78	623	412
28C	6.72	238	174	32C	7.06	260	210	32C	7.06	247	194	32C	7.06	235	180
28D	7.39	285	189	32D	7.53	310	229	32D	7.53	294	212	32D	7.52	280	196
28E	8.20	337	224	32E	8.60	367	271	32E	8.53	348	250	32E	8.53	331	232
28F	9.61	399	266	32F	9.74	434	322	32F	9.81	412	298	32F	9.81	392	276
28G	10.82	478	319	32G	11.62	519	386	32G	11.56	493	358	32G	11.56	468	332
28H	12.43	570	381	32H	13.17	620	461	32H	13.10	589	486	32H	13.10	560	346
30C	6.85	256	200	36C	7.66	293	268	36C	7.59	278	248	36C	7.59	265	230
30D	6.79	306	218	36D	8.46	349	291	36D	8.40	331	269	36D	8.40	315	250
30E	8.47	362	258	36E	9.20	414	345	36E	9.14	393	319	36E	9.14	374	296
30F	9.68	429	306	36F	10.48	489	409	36F	10.42	464	378	36F	10.42	442	351
30G	11.29	512	366	36G	11.96	585	490	36G	11.90	555	453	36G	11.89	528	420
30H	12.77	612	438	36H	13.77	698	584	36H	13.71	663	540	36H	13.70	630	501
32C	7.12	273	228												
32D	7.59	326	248												
32E	8.60	386	294												
32F	10.01	457	352												
32G	11.69	547	418												
32H	13.31	653	499												

JOIST SELECTION TABLES

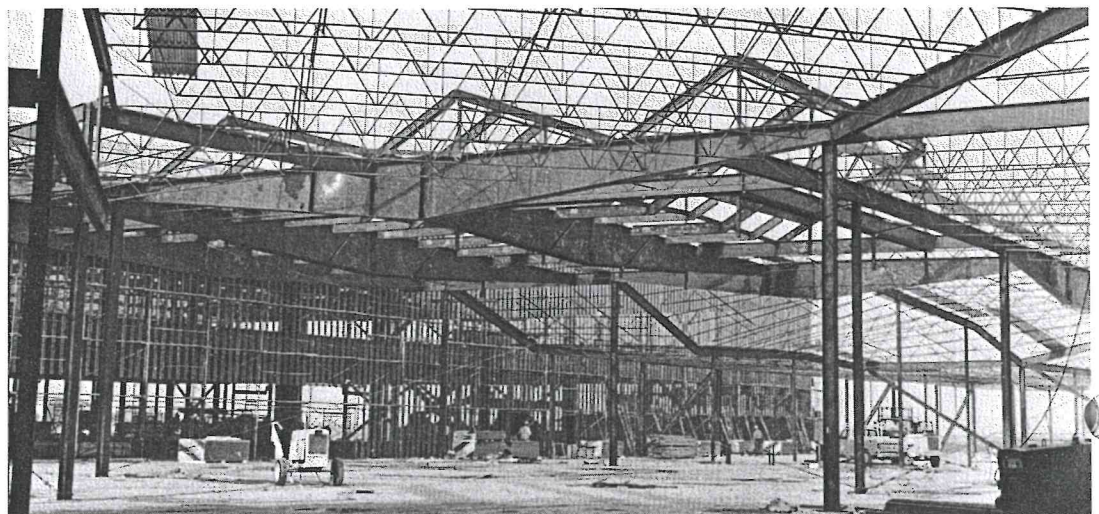
Joist Type	Joist WT	CAPACITY		Joist Type	Joist WT	CAPACITY		Joist Type	Joist WT	CAPACITY		Joist Type	Joist WT	CAPACITY	
		Total Load	Live Load $\Delta = \frac{1}{360}$ plf.			Total Load	Live Load $\Delta = \frac{1}{360}$ plf.			Total Load	Live Load $\Delta = \frac{1}{360}$ plf.			Total Load	Live Load $\Delta = \frac{1}{360}$ plf.
41 feet				42 feet				44 feet				46 feet			
24D	6.58	198	101	24E	7.39	224	110	24E	7.39	204	96	26E	7.53	203	100
24E	7.46	235	119	24F	8.40	265	133	24F	8.40	242	116	26F	8.60	240	120
24F	8.53	278	143	24G	10.01	318	160	24G	10.01	290	139	26G	10.08	287	143
24G	10.08	334	172	24H	11.42	380	190	24H	11.42	346	165	26H	11.49	344	174
24H	11.56	398	204	24J	13.31	452	226	24J	13.30	412	197	26J	13.50	409	204
24J	13.44	474	243	24K	15.12	513	263	24K	15.12	467	228	26K	15.18	464	236
24K	15.39	538	283	26D	6.99	206	111	26D	6.99	187	97	28E	7.86	219	117
26D	7.06	216	120	26E	7.73	242	132	26E	7.59	224	115	28F	9.84	259	139
26E	7.79	254	142	26F	8.80	287	156	26F	8.67	262	136	28G	10.35	310	167
26F	8.87	302	168	26G	10.28	344	187	26G	10.22	314	162	28H	11.96	371	199
26G	10.42	361	201	26H	11.76	412	223	26H	11.63	375	194	28J	14.18	440	236
26H	11.89	432	240	26J	13.78	489	267	26J	13.64	446	232	28K	15.66	500	275
26J	13.98	513	287	26K	15.52	555	310	26K	15.32	507	270	30D	7.12	198	114
26K	15.66	583	333	28D	7.19	221	128	28D	7.12	202	112	30E	8.05	235	135
28C	6.58	194	127	28E	8.00	262	154	28E	7.93	238	133	30F	9.27	278	160
28D	7.26	232	138	28F	9.27	311	182	28F	9.21	283	159	30G	10.75	333	192
28E	8.06	275	165	28G	10.48	371	218	28G	10.42	339	189	30H	12.30	397	299
28F	9.34	326	196	28H	12.16	444	260	28H	12.10	405	227	30J	14.31	472	272
28G	10.62	389	234	28J	14.38	528	310	28J	14.73	481	270	30K	16.60	536	316
28H	12.23	466	280	30C	6.65	199	136	30C	6.65	181	118	32D	7.39	212	130
28J	14.51	554	333	30D	7.76	237	149	30D	7.19	216	130	32E	8.33	251	154
30C	6.72	209	147	30E	8.20	281	176	30E	8.13	257	153	32F	9.47	297	184
30D	7.32	249	160	30F	9.41	333	209	30F	9.39	304	182	32G	11.15	355	218
30E	8.26	295	184	30G	10.95	398	250	30G	10.89	363	219	32H	12.77	424	261
30F	9.47	399	225	30H	12.43	476	299	30H	12.37	434	262	32J	14.71	504	310
30G	11.02	418	269	30J	14.58	565	356	30J	14.43	515	310	32K	16.80	572	360
30H	12.50	499	321	32C	6.92	212	155	32C	6.92	194	135	36C	7.34	200	152
30J	14.71	593	383	32D	7.46	254	169	32D	7.39	232	147	36D	8.13	239	165
32C	6.99	223	167	32E	8.40	300	200	32E	8.40	274	176	36E	8.94	283	195
32D	7.46	266	182	32F	9.68	354	238	32F	9.61	323	209	36F	10.21	334	232
32E	8.47	315	215	32G	11.36	425	286	32G	11.22	388	249	36G	11.69	400	277
32F	9.74	372	256	32H	12.90	508	342	32H	12.84	463	298	36H	13.50	478	330
32G	11.42	446	308	32J	14.92	603	406	32J	14.78	551	353	36J	15.37	567	393
32H	13.04	533	368	36C	7.53	240	199	36C	7.46	219	174	42C	7.59	234	208
32J	15.05	633	436	36D	8.27	286	216	36D	8.20	261	188	42D	8.26	280	226
36C	7.59	252	214	36E	9.01	339	256	36E	9.01	309	222	42E	9.34	331	267
36D	8.33	300	232	36F	10.35	400	303	36F	10.28	365	264	42F	10.48	391	317
36E	9.07	356	275	36G	11.76	479	362	36G	11.69	437	317	42G	12.03	468	378
36F	10.42	420	326	36H	13.58	572	433	36H	13.58	522	378	42H	13.70	558	452
36G	11.83	503	390					36J	15.46	620	448				
36H	13.64	601	465												

JOIST SELECTION TABLES

Joist Type	Joist WT	CAPACITY		Joist Type	Joist WT	CAPACITY		Joist Type	Joist WT	CAPACITY		Joist Type	Joist WT	CAPACITY	
		Total Load	Live Load $\Delta = \frac{1}{360}$ plf.			Total Load	Live Load $\Delta = \frac{1}{360}$ plf.			Total Load	Live Load $\Delta = \frac{1}{360}$ plf.			Total Load	Live Load $\Delta = \frac{1}{360}$ plf.
48 feet				50 feet				52 feet				54 feet			
28E	7.86	186	103	28E	7.79	186	91	28E	7.79	172	81	30F	9.00	202	99
28F	9.07	220	122	28F	8.94	220	109	28F	8.94	203	97	30G	10.42	242	119
28G	10.78	264	147	28G	10.21	263	130	28G	10.21	243	116	30H	11.96	289	142
28H	11.89	315	175	28H	11.83	314	155	28H	11.83	290	138	30J	13.91	343	169
28J	14.04	375	208	28J	13.98	373	185	28J	13.98	345	164	30K	16.13	390	196
28K	15.52	426	242	28K	15.39	424	214	28K	15.39	392	195	32E	8.13	183	95
30E	7.99	216	119	30E	7.93	199	105	30E	7.93	184	94	32F	9.14	216	113
30F	9.21	255	141	30F	9.14	236	125	30F	9.14	218	111	32G	10.75	258	135
30G	10.68	305	169	30G	10.62	282	149	30G	10.62	260	133	32H	12.36	308	162
30H	12.16	365	201	30H	12.10	337	179	30H	12.10	312	159	32J	14.25	366	192
30J	14.25	434	240	30J	14.11	400	212	30J	14.11	370	189	32K	16.33	416	223
30K	16.45	492	278	30K	16.40	454	246	30K	16.40	420	219	36E	8.74	206	121
32D	7.12	195	114	32E	8.20	213	120	32E	8.20	197	107	36F	9.94	243	144
32E	8.26	230	136	32F	9.34	252	142	32F	9.34	233	127	36G	11.42	291	172
32F	9.40	272	162	32G	10.95	301	170	32G	10.95	278	152	36H	13.24	348	205
32G	11.02	326	192	32H	12.56	360	204	32H	12.56	333	181	36J	15.12	423	244
32H	12.63	390	230	32J	14.45	427	242	32J	14.45	395	215	36K	16.87	468	282
32J	14.58	463	273	32K	16.60	485	281	32K	16.60	448	250	36L	19.49	473	318
32K	16.72	526	317	36D	8.06	203	129	36D	8.06	188	114	36M	20.70	526	330
36D	8.13	219	145	36E	8.80	240	152	36E	8.80	222	136	36N	21.64	594	351
36E	8.87	260	172	36F	10.08	284	181	36F	10.08	263	161	36P	24.53	663	390
36F	10.15	307	204	36G	11.56	339	216	36G	11.56	313	192	36Q	26.47	768	468
36G	11.62	367	244	36H	13.37	405	258	36H	13.37	375	230	42D	8.13	204	140
36H	13.44	439	290	36J	15.25	481	306	36J	15.25	445	273	42E	9.14	241	166
36J	15.32	521	346	36K	17.00	545	355	36K	17.00	504	316	42F	10.28	285	197
36K	17.87	541	401	36L	19.62	551	399	36L	19.62	510	355	42G	11.76	340	235
36L	19.69	597	460	36M	20.83	612	414	36M	20.83	567	369	42H	13.50	406	280
36M	20.90	663	477	36N	21.77	691	441	36N	21.77	640	393	42J	15.52	482	332
36N	21.89	749	508	36P	24.73	772	489	36P	24.73	714	436	42K	20.36	555	435
36P	24.80	836	564	42C	7.53	199	162	42C	7.53	184	144	42L	21.30	617	457
42C	7.52	215	183	42D	8.20	237	176	42D	8.20	219	157	42M	22.91	696	483
42D	8.20	257	199	42E	9.27	280	208	42E	9.27	259	185	48L	20.50	637	574
42E	9.10	304	235	42F	10.42	332	247	42F	10.42	307	220	48M	21.77	708	602
42F	10.48	359	279	42G	11.89	396	295	42G	11.89	366	263				
42G	11.96	430	333	42H	13.57	473	352	42H	13.57	438	313				
42H	13.64	513	398	42J	15.66	562	418	42J	15.66	520	372				
42L	20.56	700	630	42L	20.50	646	546	42L	20.50	598	487				
42M	21.57	718	660	42M	21.44	718	573	42M	21.44	665	510				
42N	23.11	878	699	42N	23.05	810	606	42N	23.05	750	540				
				48L	20.63	742	721	48L	20.63	686	599				

JOIST SELECTION TABLES

CAPACITY				CAPACITY				CAPACITY				CAPACITY			
Joist Type	Joist WT	Total Load	Live Load $\Delta = \frac{1}{360}$ plf.	Joist Type	Joist WT	Total Load	Live Load $\Delta = \frac{1}{360}$ plf.	Joist Type	Joist WT	Total Load	Live Load $\Delta = \frac{1}{360}$ plf.	Joist Type	Joist WT	Total Load	Live Load $\Delta = \frac{1}{360}$ plf.
56 feet				58 feet				60 feet				62 feet			
30G	10.28	225	107	32F	9.00	187	92	32G	10.42	208	99	36G	11.15	221	114
30H	11.76	268	127	32G	10.62	223	109	32H	12.03	248	118	36H	12.90	264	136
30J	13.70	319	151	32H	12.23	266	131	32J	13.77	296	140	36J	14.78	313	161
30K	15.93	363	176	32J	13.98	317	155	32K	15.93	337	163	36K	16.46	356	187
32F	9.00	201	102	32K	16.13	361	180	36F	9.67	196	105	36L	19.22	360	211
32G	10.62	240	122	36E	8.60	179	98	36G	11.22	235	126	36M	20.43	400	219
32H	12.23	286	145	36F	9.81	210	116	36H	13.04	282	150	36N	21.37	452	233
32J	13.98	340	172	36G	11.29	252	139	36J	14.92	334	178	36P	24.08	504	259
32K	16.13	387	200	36H	13.10	302	166	36K	16.60	378	206	36Q	26.07	585	311
36E	8.60	192	109	36J	14.98	366	197	36L	19.28	384	233	42F	10.01	216	130
36F	9.81	226	129	36K	16.73	405	228	36M	20.50	427	241	42G	11.49	258	155
36G	11.29	270	154	36L	19.42	410	257	36N	21.44	482	257	42H	13.17	308	185
36H	13.10	324	184	36M	20.63	457	267	36P	24.12	538	285	42J	15.12	366	220
36J	14.98	393	219	36N	21.57	515	284	36Q	26.27	624	343	42K	17.00	415	255
36K	16.73	435	253	36P	24.33	576	315	42E	9.00	195	121	42L	19.96	422	289
36L	19.42	440	285	36Q	26.54	667	379	42F	10.08	230	144	42M	20.83	470	303
36M	20.63	490	296	42E	9.07	209	134	42G	11.56	275	171	42N	22.44	530	321
36N	21.57	562	315	42F	10.21	247	159	42H	13.30	329	204	42P	24.00	592	355
36P	24.33	617	350	42G	11.69	295	190	42J	15.25	391	243	42Q	26.81	682	422
36Q	26.54	715	421	42H	13.38	352	226	42K	17.13	443	281	48L	20.70	485	381
42E	9.07	224	149	42J	15.39	418	268	42L	20.09	450	318	48M	21.43	539	400
42F	10.21	265	176	42K	17.27	475	311	42M	21.03	501	334	48N	22.58	608	424
42G	11.69	316	211	42L	20.23	481	352	42N	22.58	565	353	48P	25.13	679	467
42H	13.38	378	253	42M	21.17	535	369	42P	24.26	631	392	54L	21.10	547	486
42J	15.39	448	298	42N	22.78	605	391	42Q	27.01	728	465	54M	22.31	608	508
42K	17.27	509	346	42P	24.46	674	433	48L	20.30	517	420	54N	23.79	686	538
42L	20.23	516	391	48L	20.43	553	464	48M	21.57	575	441	60L	21.97	610	603
42M	21.17	574	410	48M	21.70	615	487	48N	22.71	648	467	60M	22.85	677	632
42N	22.78	648	433	48N	22.85	694	516	48P	25.33	724	514				
42P	24.46	723	481	54L	21.37	624	592	54L	21.23	584	535				
48L	20.43	593	515	54M	22.51	694	619	54M	22.44	649	560				
48M	21.70	659	541					54N	23.92	732	593				
48N	22.85	744	573												
54L	21.37	669	657												
54M	22.51	744	687												



JOIST SELECTION TABLES

GWS JOISTS

Joist Type	Joist WT	CAPACITY		Joist Type	Joist WT	CAPACITY		Joist Type	Joist WT	CAPACITY		Joist Type	Joist WT	CAPACITY	
		Total Load	Live Load $\Delta = \frac{1}{360}$ plf.			Total Load	Live Load $\Delta = \frac{1}{360}$ plf.			Total Load	Live Load $\Delta = \frac{1}{360}$ plf.			Total Load	Live Load $\Delta = \frac{1}{360}$ plf.
64 feet				66 feet				68 feet				70 feet			
36G	11.15	207	104	36L	19.08	318	175	36L	19.08	300	160	36L	19.19	283	147
36H	12.90	248	124	36M	20.36	354	182	36M	20.36	333	166	36M	20.41	315	153
36J	14.78	294	147	36N	21.23	399	194	36N	21.23	376	171	36N	21.36	355	163
36K	16.46	334	170	36P	23.79	446	215	36P	23.79	420	197	36P	23.80	397	180
36L	19.22	338	192	36Q	25.80	517	258	36Q	25.80	487	236	36Q	25.76	460	217
36M	20.43	375	199	42L	19.82	373	240	42L	19.82	351	220	42L	19.67	332	201
36N	21.37	424	212	42M	20.70	415	252	42M	20.70	391	230	42M	20.50	369	211
36P	24.08	473	235	42N	22.31	468	266	42N	22.31	441	244	42N	22.10	416	223
36Q	26.07	549	283	42P	23.80	523	295	42P	23.80	492	270	42P	23.58	465	248
42F	10.01	203	118	42Q	26.54	603	351	42Q	26.54	568	321	42Q	26.34	536	294
42G	11.49	242	141	48L	20.10	428	316	48L	20.10	403	289	48L	19.96	381	265
42H	13.17	289	169	48M	21.30	476	332	48M	21.30	448	304	48M	21.17	424	279
42J	15.12	342	200	48N	22.44	537	352	48N	22.44	506	322	48N	22.38	478	295
42K	17.00	389	232	48P	24.93	600	387	48P	24.93	565	355	48P	24.23	534	325
42L	19.96	396	263	54L	20.97	484	403	54L	20.97	456	369	48Q	26.95	613	384
42M	20.83	441	276	54M	22.17	538	421	54M	22.17	507	386	54L	20.83	430	338
42N	22.44	497	292	54N	23.65	606	447	54N	23.65	571	409	54M	22.04	478	354
42P	24.00	556	323	60L	21.84	539	501	60L	21.84	508	458	54N	23.52	540	375
42Q	26.81	640	384	60M	22.71	599	525	60M	22.71	565	480	54P	25.33	602	415
48L	20.20	455	347									60L	21.70	480	420
48M	21.43	506	364									60M	22.58	533	440
48N	22.58	570	386									60N	23.92	601	466
48P	25.13	637	425												
54L	21.10	519	442												
54M	22.31	570	462												
54N	23.79	644	490												
60L	21.97	572	549												
60M	22.85	635	575												



Photo courtesy of Gerry Kahrmann, Brian Lee's Photographers Plus Ltd.

JOIST SELECTION TABLES

Joist Type	Joist WT lb/ft.	CAPACITY Total Load plf.	Live Load $\Delta = \frac{1}{360}$ plf.	Joist Type	Joist WT lb/ft.	CAPACITY Total Load plf.	Live Load $\Delta = \frac{1}{360}$ plf.	Joist Type	Joist WT lb/ft.	CAPACITY Total Load plf.	Live Load $\Delta = \frac{1}{360}$ plf.	Joist Type	Joist WT lb/ft.	CAPACITY Total Load plf.	Live Load $\Delta = \frac{1}{360}$ plf.
72 feet				74 feet				76 feet				80 feet			
42L	19.55	314	185	42L	19.55	297	170	42L	19.42	282	158	42L	19.28	255	135
42M	20.36	349	194	42M	20.36	330	179	42M	20.23	314	165	42M	20.02	283	141
42N	21.97	394	205	42N	21.97	373	189	42N	21.77	354	175	42N	21.64	320	150
42P	23.32	490	228	42P	23.32	416	210	42P	23.11	395	194	42P	22.97	357	166
42Q	26.07	507	270	42Q	26.07	480	249	42Q	25.80	456	230	42Q	25.60	412	197
48L	19.89	360	244	48L	19.89	341	225	48L	19.75	324	208	48L	19.69	292	178
48M	21.03	400	258	48M	21.03	379	236	48M	20.90	360	218	48M	20.76	325	187
48N	22.24	452	291	48N	22.24	428	250	48N	22.10	406	231	48N	21.97	366	198
48P	24.53	505	299	48P	24.53	478	275	48P	24.32	454	255	48P	24.12	410	219
48Q	26.74	580	353	48Q	26.74	549	325	48Q	26.54	520	300	48Q	26.34	470	257
54L	20.70	407	311	54L	20.70	385	287	54L	20.56	366	265	54L	20.43	330	227
54M	21.90	452	325	54M	21.90	428	300	54M	21.77	406	277	54M	21.64	367	238
54N	23.45	510	345	54N	23.45	483	318	54N	23.32	458	294	54N	23.18	414	252
54P	25.20	570	381	54P	25.20	540	351	54P	25.06	512	325	54P	25.00	462	279
60L	21.57	454	386	60L	21.57	430	356	60L	21.43	407	329	60L	21.30	368	282
60M	22.44	509	405	60M	22.44	477	373	60M	22.31	453	345	60M	22.17	409	296
60N	23.79	568	428	60N	23.79	538	394	60N	23.65	510	365	60N	23.58	461	313
								72L	23.11	491	477	72L	22.98	443	410
								72M	24.46	546	500	72M	24.32	493	429
85 feet				90 feet				95 feet				100 feet			
48L	19.42	259	149	48L	19.42	231	125	54L	19.82	235	136	54L	19.69	212	117
48M	20.56	288	156	48M	20.56	257	131	54M	21.03	261	143	54M	20.90	236	123
48N	21.70	325	166	48N	21.70	290	140	54N	22.51	294	151	54N	22.44	266	129
48P	23.72	363	182	48P	23.72	324	153	54P	24.39	378	167	54P	24.33	297	193
48Q	25.94	417	216	48Q	25.94	372	182	54Q	26.47	376	196	54Q	26.34	340	168
54L	20.16	293	190	54L	20.16	261	160	60L	20.63	261	169	60L	20.50	236	145
54M	21.43	325	199	54M	21.43	290	168	60M	21.50	291	177	60M	21.37	263	152
54N	22.91	367	210	54N	22.91	328	177	60N	22.98	328	188	60N	22.85	296	161
54P	24.73	410	233	54P	24.73	366	196	60P	25.00	366	207	60P	24.86	330	178
54Q	26.81	469	273	54Q	26.81	418	230	60Q	27.21	418	242	60Q	27.08	378	208
60L	21.04	326	236	60L	21.04	291	199	72L	22.38	315	246	72L	22.31	285	211
60M	21.90	363	247	60M	21.90	324	208	72M	23.58	350	257	72M	23.45	316	220
60N	23.32	409	261	60N	23.32	365	220	72N	25.00	395	272	72N	24.80	357	233
60P	25.33	457	289	60P	25.33	408	244								
72L	22.78	393	342	72L	22.79	350	288								
72M	24.06	437	358	72M	24.06	390	302								

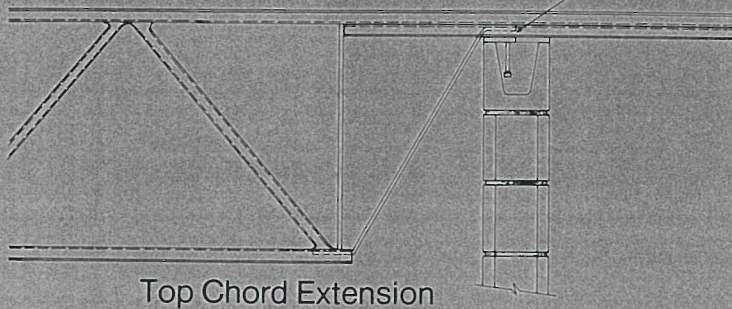
JOIST SELECTION TABLES

GWS JOISTS

Joist Type	Joist WT	CAPACITY		Joist Type	Joist WT	CAPACITY		Joist Type	Joist WT	CAPACITY		Joist Type	Joist WT	CAPACITY	
	lb/ft.	Total Load	Live Load		lb/ft.	Total Load	Live Load		lb/ft.	Total Load	Live Load		lb/ft.	Total Load	Live Load
		plf.	$\Delta = \frac{1}{360}$ plf.			plf.	$\Delta = \frac{1}{360}$ plf.			plf.	$\Delta = \frac{1}{360}$ plf.			plf.	$\Delta = \frac{1}{360}$ plf.
105 feet				110 feet				115 feet				120 feet			
54L	19.42	192	101	60L	20.09	196	109	60L	19.82	179	96	60M	20.56	183	88
54M	20.63	214	106	60M	20.97	217	115	60M	20.70	199	100	60N	22.17	206	94
54N	22.17	241	111	60N	22.51	245	121	60N	22.31	224	106	60P	24.19	230	103
54P	24.06	269	124	60P	24.53	273	134	60P	24.32	250	117	60Q	26.40	263	120
54Q	26.14	308	145	60Q	26.74	312	156	60Q	26.47	286	137	72L	21.57	198	122
60L	20.23	214	125	72L	21.90	236	159	72L	21.70	216	139	72M	22.58	220	128
60M	21.10	238	131	72M	22.98	262	166	72M	22.71	240	145	72N	23.92	248	136
60N	22.65	269	139	72N	24.40	295	176	72N	24.12	270	154	72P	24.73	315	150
60P	24.66	300	154	72P	25.40	330	194	72P	25.00	302	170				
60Q	26.81	343	180												
72L	22.04	258	182												
72M	23.11	287	190												
72N	24.53	323	201												

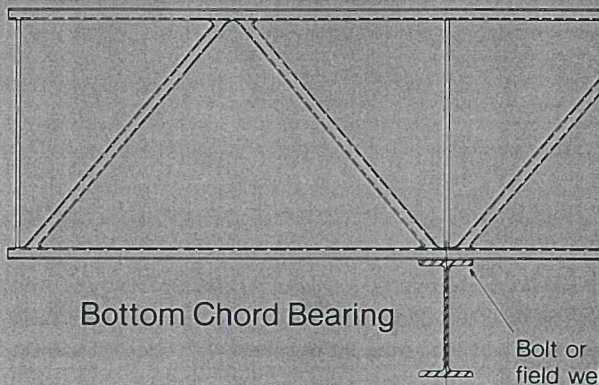
JOIST SUPPORT DETAILS

Concrete or Masonry Bearing



Top Chord Extension

Steel Bearing

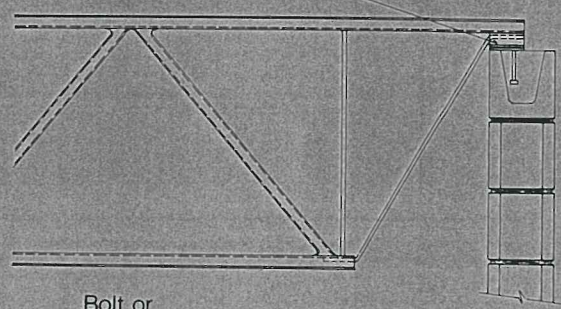


Bottom Chord Bearing

Joist Seat Details

Bolt or field weld joint to steel beam

Field weld joint to steel plate embedded in concrete



Bolt or field weld joint to steel beam

Tie Joist Detail

For short and intermediate span joists $A = 2\frac{1}{2}$ in.

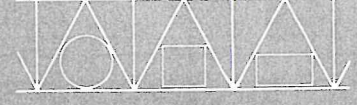
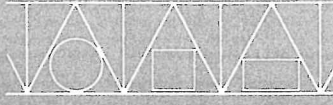
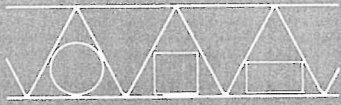
For long span joists $A = 5$ in.



A

Min. bearing on steel

$2\frac{1}{2}$ "



Short Span

JOIST	DIA.	SQ.	RECT.
12	7 $\frac{1}{4}$	5 $\frac{3}{4}$	4 × 9 $\frac{3}{4}$
14	8 $\frac{1}{4}$	6 $\frac{1}{2}$	5 × 9 $\frac{3}{4}$
16	9 $\frac{1}{4}$	7 $\frac{1}{4}$	5 $\frac{3}{4}$ × 9 $\frac{3}{4}$

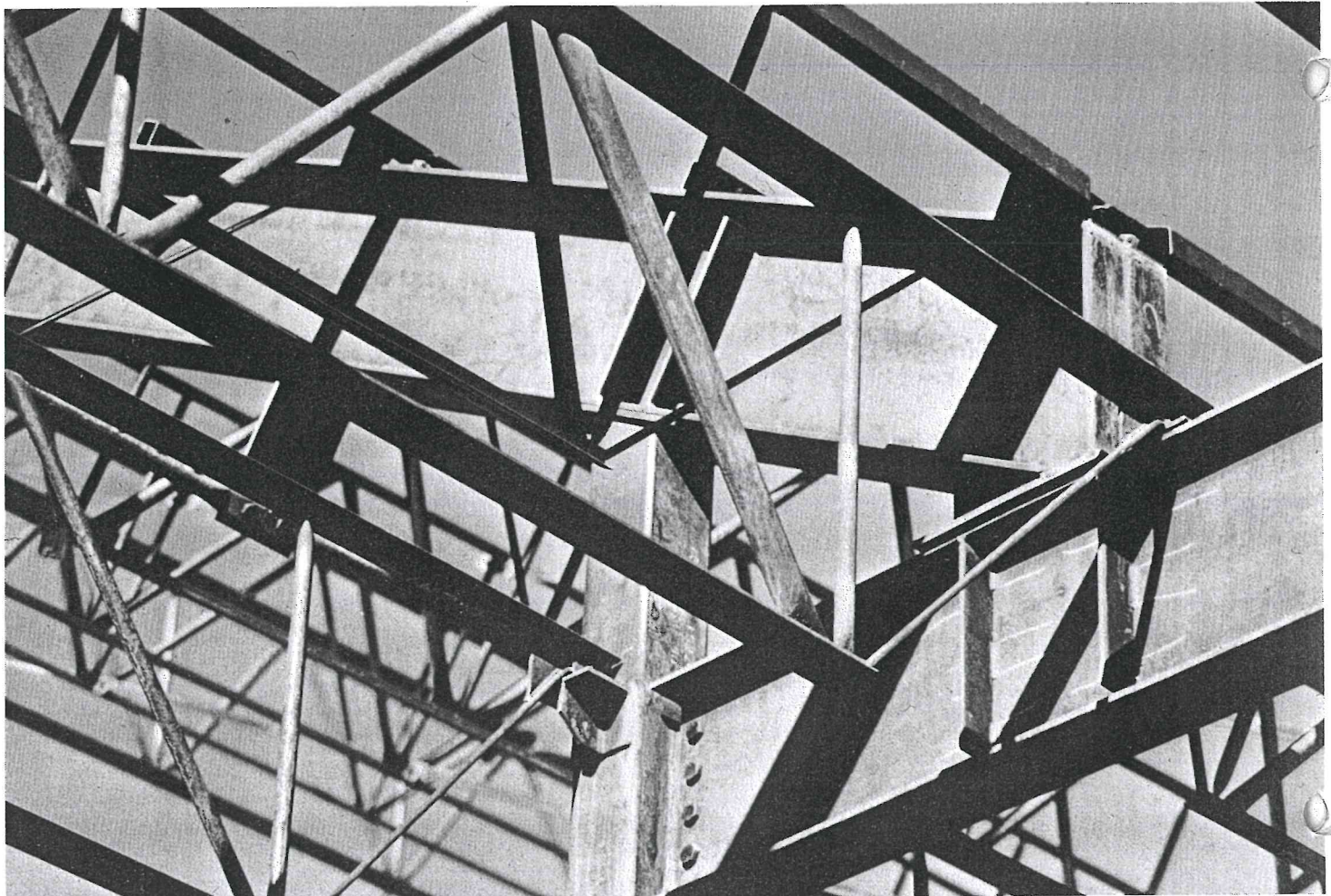
Intermediate Span

JOIST	DIA.	SQ.	RECT.
18	12 $\frac{3}{4}$	10 $\frac{1}{2}$	6 $\frac{3}{4}$ × 19 $\frac{3}{4}$
20	14 $\frac{1}{4}$	11 $\frac{1}{2}$	7 $\frac{3}{4}$ × 19 $\frac{3}{4}$
22	15 $\frac{1}{2}$	12 $\frac{1}{2}$	8 $\frac{3}{4}$ × 19 $\frac{3}{4}$
24	16 $\frac{3}{4}$	13 $\frac{1}{4}$	9 $\frac{3}{4}$ × 19 $\frac{3}{4}$
26	17 $\frac{3}{4}$	14	10 $\frac{3}{4}$ × 19 $\frac{3}{4}$
28	18 $\frac{1}{2}$	15	11 $\frac{3}{4}$ × 19 $\frac{3}{4}$
30	19 $\frac{3}{4}$	15 $\frac{3}{4}$	12 $\frac{3}{4}$ × 19 $\frac{3}{4}$
32	20 $\frac{1}{2}$	16 $\frac{1}{2}$	13 $\frac{3}{4}$ × 19 $\frac{3}{4}$
34	21 $\frac{1}{4}$	17	14 $\frac{3}{4}$ × 19 $\frac{3}{4}$
36	21 $\frac{3}{4}$	17 $\frac{3}{4}$	15 $\frac{3}{4}$ × 19 $\frac{3}{4}$
38	22 $\frac{1}{2}$	18 $\frac{1}{4}$	16 $\frac{3}{4}$ × 19 $\frac{3}{4}$
40	23	18 $\frac{3}{4}$	17 $\frac{3}{4}$ × 19 $\frac{3}{4}$
42	23 $\frac{1}{2}$	19	18 $\frac{3}{4}$ × 19 $\frac{3}{4}$

Long Span

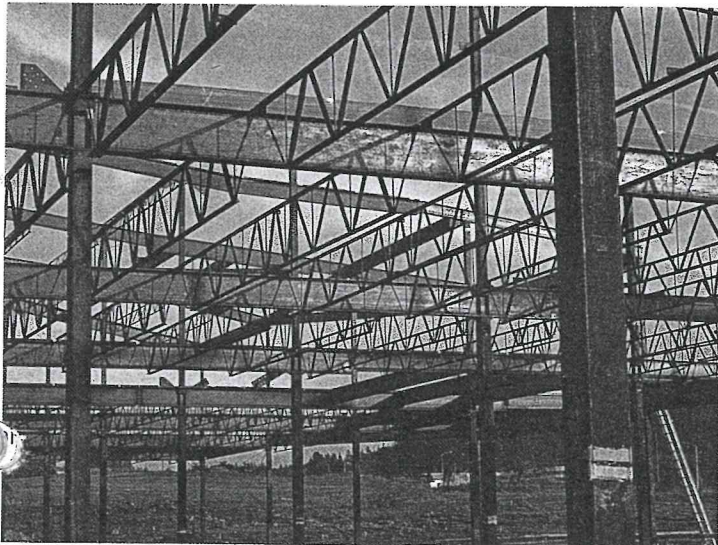
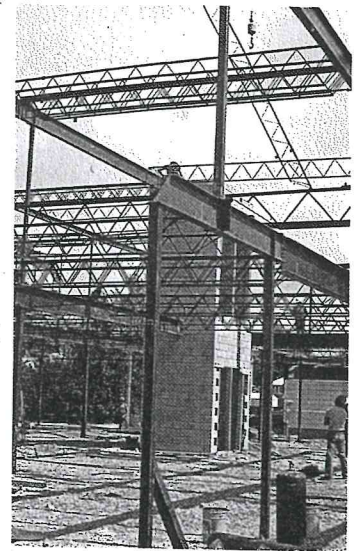
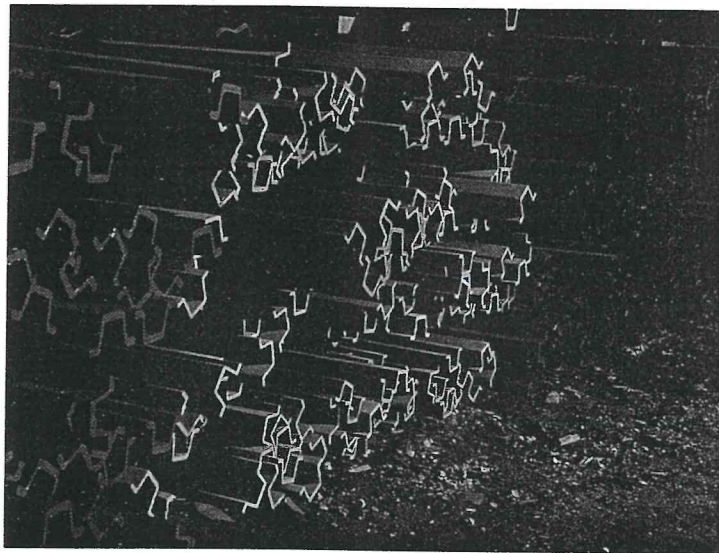
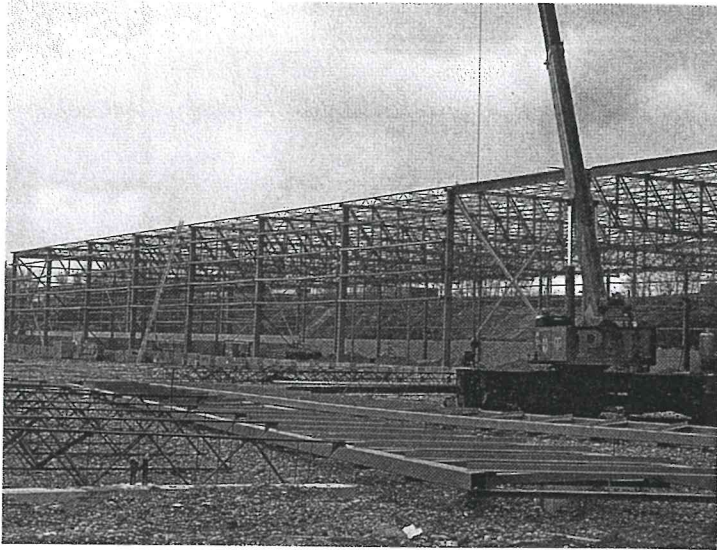
JOIST	DIA.	SQ.	RECT.
36	27 $\frac{1}{2}$	22 $\frac{1}{2}$	14 $\frac{3}{4}$ × 41 $\frac{1}{4}$
42	31 $\frac{1}{2}$	25 $\frac{1}{4}$	17 $\frac{3}{4}$ × 41 $\frac{1}{4}$
48	35	28	20 $\frac{3}{4}$ × 41 $\frac{1}{4}$
54	38	30 $\frac{1}{4}$	23 $\frac{1}{2}$ × 41 $\frac{1}{4}$
60	41	32 $\frac{1}{2}$	26 $\frac{1}{2}$ × 41 $\frac{1}{4}$
72	45 $\frac{1}{4}$	36 $\frac{1}{2}$	32 $\frac{1}{2}$ × 41 $\frac{1}{4}$

The rectangular duct dimensions are calculated for maximum area in duct. All dimensions in table are in inches.





Great West Steel Industries





Great West Steel Industries

now in
SUNNYDALE, WA
1-800-837-7008
Mike Ross

BLAKE
FLOOD

GREAT WEST STEEL INDUSTRIES INC.

7038 South 196th Street
Kent, Washington 98031
U.S.A. (near Seattle)
Tel. No. (206) 872-8790
Telex No. 0032-8437

GREAT WEST STEEL INDUSTRIES LTD.

2600 Oceanic Plaza
1066 West Hastings Street,
Vancouver, British Columbia
Canada V6E 3Z2
Tel. No. (604) 682-3101
Telex No. 04-55110

New Westminster Plant
6010 Trapp Road
New Westminster,
British Columbia
Canada V3N 2V4
Tel. No. (604) 524-4421
Telex No. 04-507885

Edmonton Plant
2801 - 84 Avenue
P.O. Box 190
Edmonton, Alberta
Canada T5J 2J1
Tel. No. (403) 464-0435
Telex No. 037-3792

Calgary Plant
223 - 53rd Avenue S.E.
P.O. Box 5688, Station "A"
Calgary, Alberta
Canada T2H 1Y1
Tel. No. (403) 252-7591
Telex No. 03-822720

Saskatoon Plant
2502 Thayer Avenue
P.O. Box 239
Saskatoon, Saskatchewan
Canada S7K 3K4
Tel. No. (306) 653-2848
Telex No. 074-2644



NO ANSWERS
CANADIAN NOW