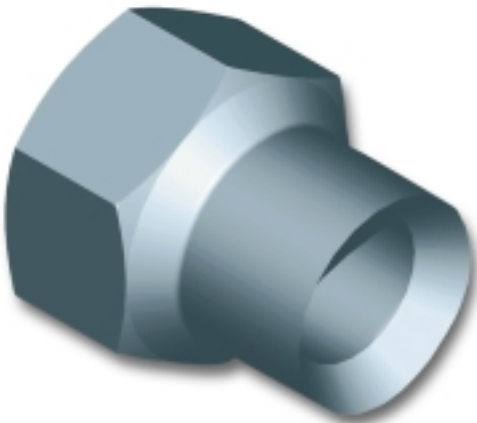


Elocone



A division of **Canam Group**

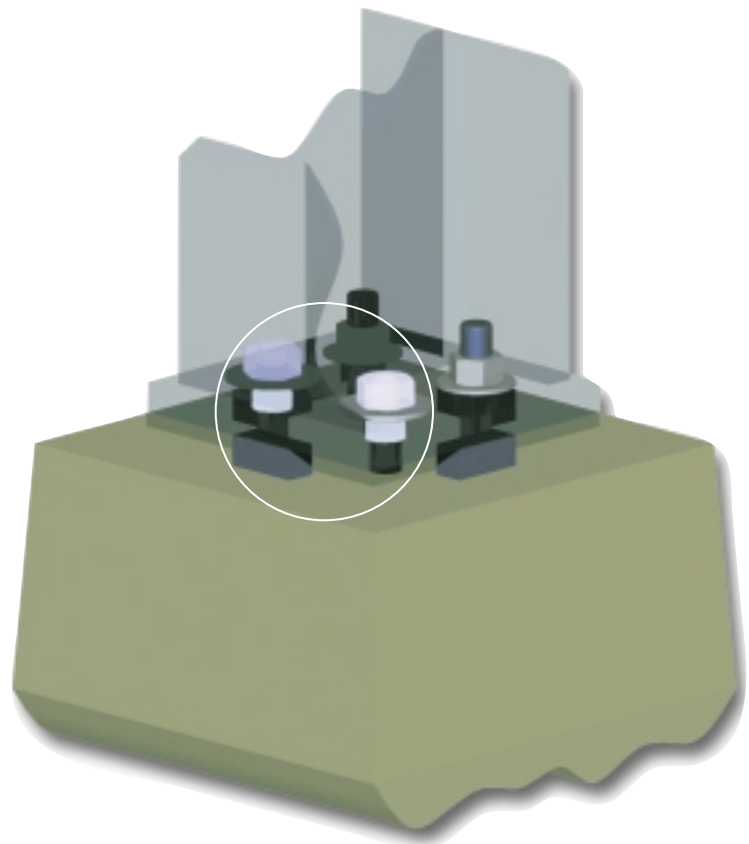
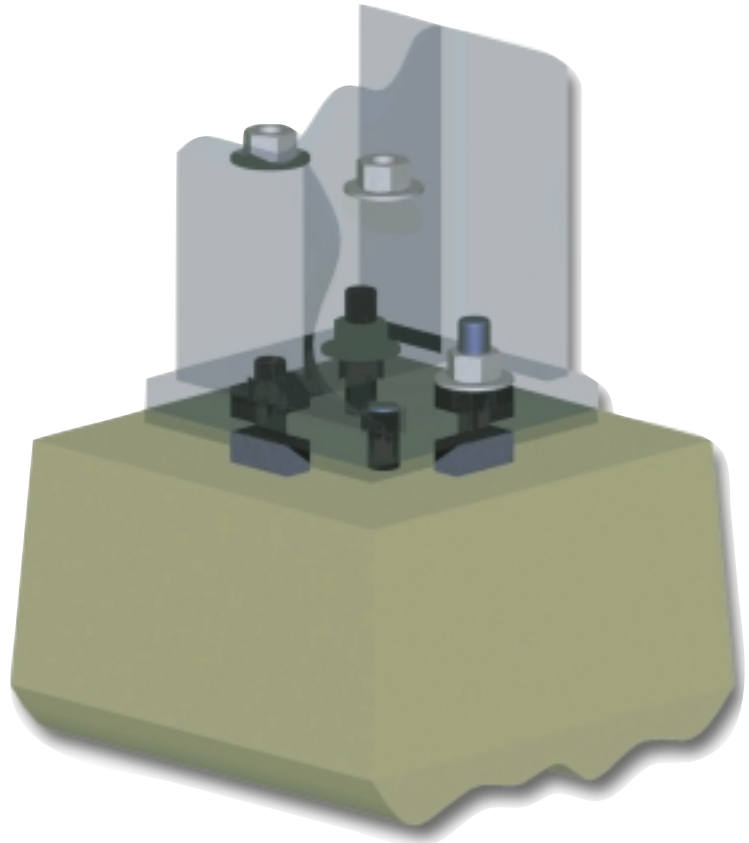
ELOCONE NUTS



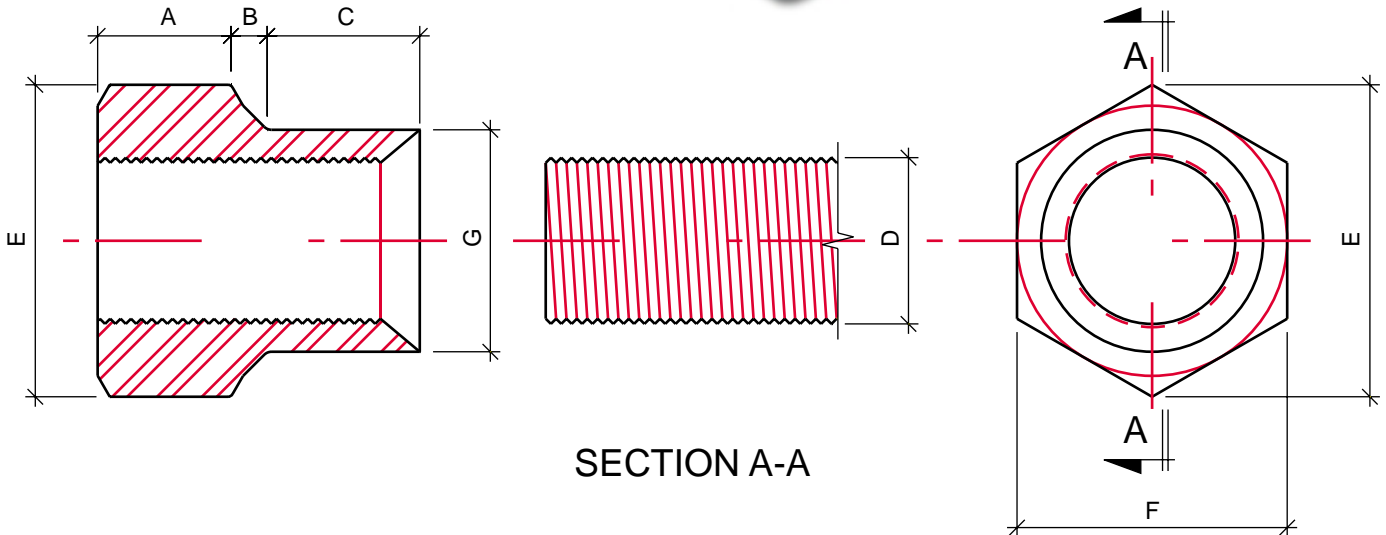
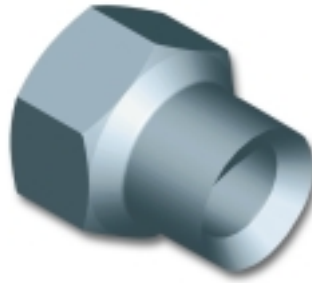
Elocones are special elongated nuts that can be used to correct problems encountered when the anchor rods are installed without enough projection above the concrete foundation.

These nuts are fabricated by machining a piece of high strength steel to two different sections. The upper section is similar to a standard nut and will bear on the column base plate. The lower section has a smaller smooth diameter and is able to fit in an oversized hole of the base plate to screw on enough threads of the anchor rod installed with a short projection.

In order to develop the tension capacity of an anchor made of steel with a tensile strength of 105 ksi (725 MPa), the Elocone nuts must be fastened to the anchor rod for a length equal to the diameter of the anchor rod.



DIMENSION OF ELOCONE NUTS



ELOCONE EXTENDED NUTS DIMENSIONS

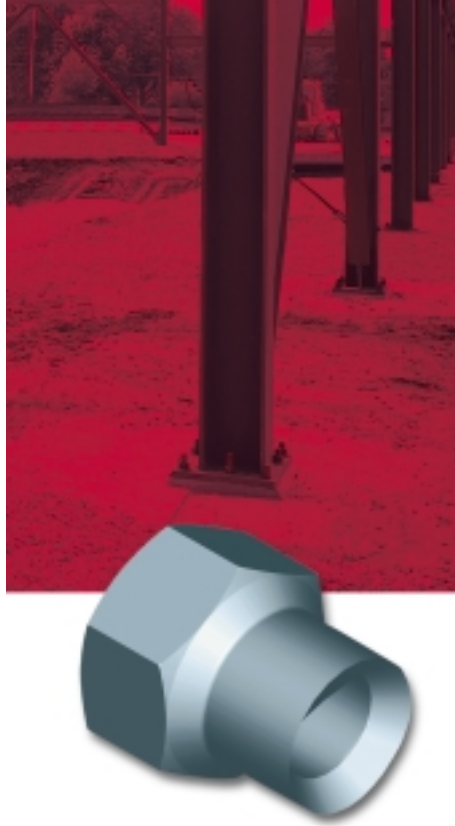
Elocone nuts are machined pieces with a standard nut head and an elongated lower part that can be screwed to anchor rods within the thickness of the base plate.

Dimensions can change without notice.

Hardness 32 - 36 HRC

Elocone Steel $F_y = 140$ ksi (965 MPa) app.

Part Number	Anchor Rod Diameter (in.)	Outside Diameter of Narrow Bottom Part (in.)	Length of Upper Nut (in.)	Length of Transition (in.)	Length of Narrow Bottom Part (in.)	Elocone Nut Overall Length (in.)	Dimension Across Corners of Upper Nut (in.)	Dimension Across Flats of Upper Nut (in.)	Net Weight (lbs)	Number of Threads Per Inch and Size of Threads	Size of Socket to Use on Elocone Nut (in.)
	D	G	A	B	C	A + B + C	E	F			
HBA-0019	0.750	1.000	0.688	0.125	0.688	1.500	1.443	1.250	0.3	10 NC	1 1/4
HBA-0023	0.750	1.000	0.688	0.125	1.438	2.250	1.443	1.250	0.4	10 NC	1 1/4
HBA-0024	0.875	1.180	0.781	0.156	1.000	1.938	1.660	1.438	0.5	9 NC	1 7/16
HBA-0020	1.000	1.333	0.917	0.146	1.000	2.063	1.876	1.625	0.7	8 NC	1 5/8
HBA-0027	1.125	1.500	1.000	0.188	1.125	2.313	2.093	1.813	0.9	7 NC	1 13/16
HBA-0021	1.250	1.688	1.188	0.188	1.250	2.625	2.309	2.000	1.5	7 NC	2
HBA-0025	1.250	1.688	1.188	0.188	2.250	3.625	2.309	2.000	1.9	7 NC	2
HBA-0026	1.375	1.830	1.233	0.205	1.500	2.938	2.526	2.188	1.7	6 NC	2 3/16
HBA-0022	1.500	2.000	1.375	0.188	1.500	3.063	2.742	2.375	2.2	6 NC	2 3/8



Better Building **Solutions**

To get more information or to order **Elocone** nuts, please contact



CANAM
Solutions + Service

Canam Steel Corporation

50 Eastman Street
Easton, MA 02334-1245
Telephone: (508) 238-4500
Fax: (508) 238-8253

www.canam.ws



Amcan Threaded Products Inc.

1350, Marie-Victorin Street
St-Bruno-de-Montarville (Québec)
Canada J3V 6B9
Telephone: (450) 441-6011
Toll-free: 1-800-661-2658
Fax: (450) 441-5511

www.amcanfasteners.com