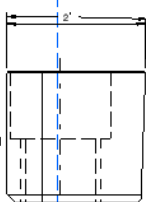
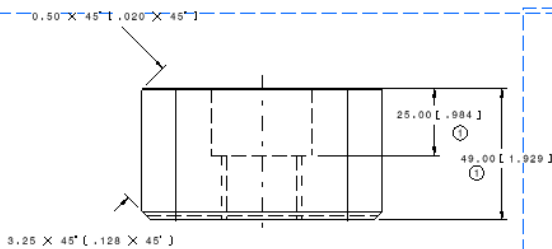


- Toolbars
- Commands List...
- Specifications F3
- Sub-Trees
- Compass
- Reset Compass
- Geometry Overview
- Fit All In
- Zoom Area
- Zoom In Out
- Pan
- Modify
- Named Views...
- Magnifier...
- Hide/Show
- Full Screen
- Standard
- Workbench
- Graphic Properties
- View
- 3Dx Device
- Workbenches
- ErrorLog
- EnoviaVPM
- PCS Statistics
- ENOVIA V5 VPM
- Instant Collaboration
- DMU 2D Annotated Views
- DMU 2D Move
- DMU 2D Tools
- DMU 2D Viewing
- DMUSelect
- Customize...



Nemak Aluminum Autoparts



NOTE:
ALL PRIMARY DIMENSIONS ARE
MILLIMETERS AND ALL SECONDARY
WITH "[]" ARE INCHES

ALL DIMENSIONS MUST BE HELD TO SPECIFIED TOLERANCES TO INSURE INTERCHANGEABILITY OF THE PARTS FROM OTHER DIES OF SAME DESIGN.

NO WELDING IN CAVITY AREA UNLESS PREVIOUS APPROVAL IS OBTAINED IN WRITING FROM NEMAK CASTING PLANT.

STAMP OR ETCH EACH DETAIL AS FOLLOWS:
1) DESIGN NO. & DETAIL NUMBER
2) STEEL MARK
3) NEMAK IDENTIFICATION CODE
4) NOT TO APPEAR ON POLISHED AREA

TOLERANCES ON TOOLS, UNLESS OTHERWISE SPECIFIED:
1) 0.0125 ON TWO PLACE DECIMALS
2) 0.005 ON TWO PLACE DECIMALS
3) 0.001 ON THREE PLACE DECIMALS
NO CUMULATIVE TOLERANCES, 0.3 (0.012) ON SURFACE LOCATIONS

ALL TRIDDING, NO MANUAL REVISIONS ALLOWED.

146 T 3 100.00 X 51.75 X 60.00
13.343 X 2.037 X 1.9591

DETAIL * AMT. LTO SH

FINISH SIZE

DATE 11-30-03 SCALE 1/1

Single Cavity Die Cast Die to Produce Ford Duratec 37 Engine Block Part# AFBR3E-6015

THIRD ANGLE PROJECTION

1 of 1 E63_0182_146

FILE NAME: E63_0182_146_24_SPRUE-BUSHING-KEY

E63_0182_146

DET. # E63_0182_146 - SPRUE-BUSHING KEY

