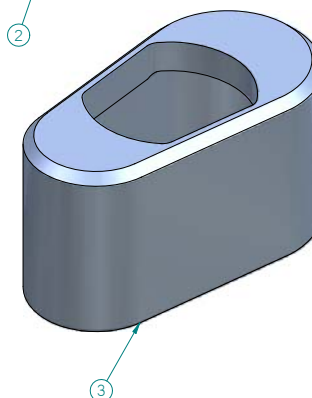
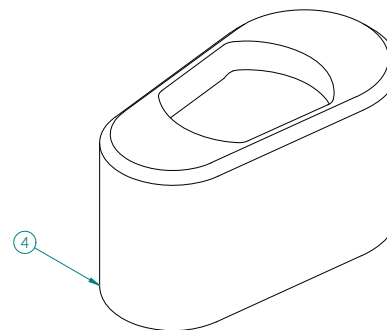
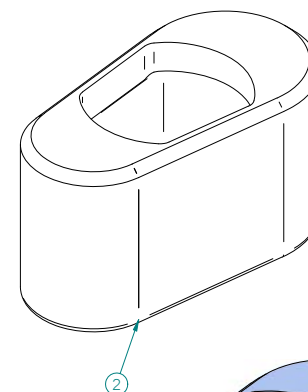
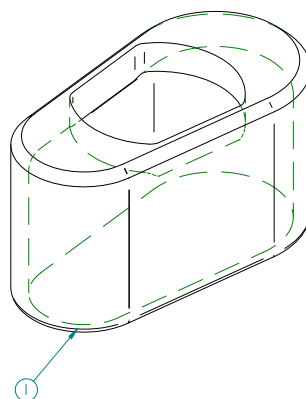
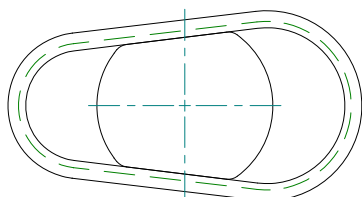
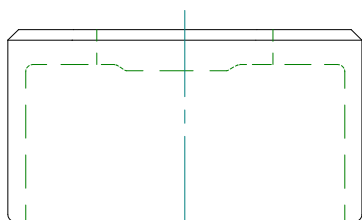
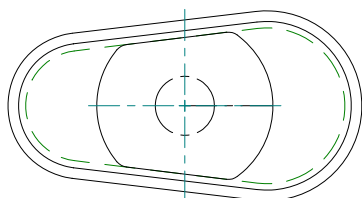


NO.	DATE	DESCRIPTION	DR.	CK.



NOTE:
1) ALL DOWEL LOCATIONS TO
BE $\pm .0005$ UNLESS
OTHERWISE SPECIFIED

QUANTITY REQ'D	DESCRIPTION	MATERIAL	DET
1	3RD STA LOCATOR SLEEVE	D2 R/C 60-62	9
<div> <div> STANDARD NOTES UNLESS OTHERWISE SPECIFIED: 1) STAMP "JOB, STA, DET, AND MATL." 2) BREAK ALL SHARP EDGES 1/32" 3) GROUND DIAMETERS CONCENTRIC WITHIN .0005" 4) HOLE LOCATIONS (XXXX) TO BE $\pm .005$ UNLESS OTHERWISE SPECIFIED </div> <div> INCH TOLERANCES UNLESS OTHERWISE SPECIFIED: DECIMALS XX $\pm .010$" XXX $\pm .001$" XXXX $\pm .0005$" </div> <div> THREAD DEPTHS $\pm .030$" ANGLES $\pm .5$" FRAC. $\pm 1/32$" INSIDE RADII .015" MAX </div> <div> DR. CADMAN/964 DATE 5/6/08 CK. SCALE FULL PRESS 2012 </div> <div> </div> <div> SOLID MODELED IN SOLID EDGE PAPER SIZE B DO NOT SCALE JOB# MFG-1492-1 </div> </div>			

REV. 4/23/08