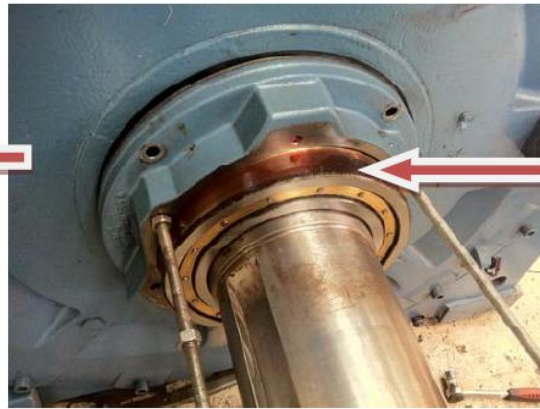




Bearing grease Decolorised



Bearing Scewed & Overheated



Outer Bearing Housing Damaged



Outer Bearing Housing Damaged



Drive End bearing outer runner axially Damaged



Drive End bearing outer runner axially Damaged

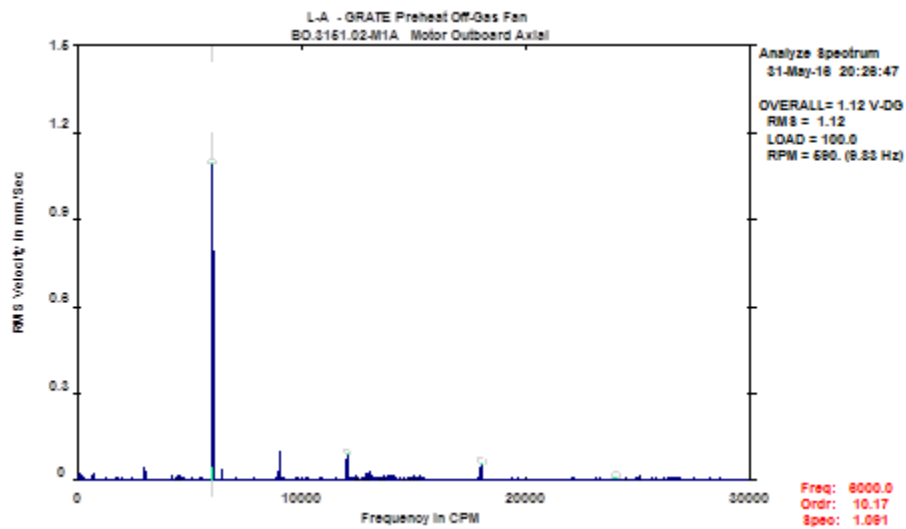
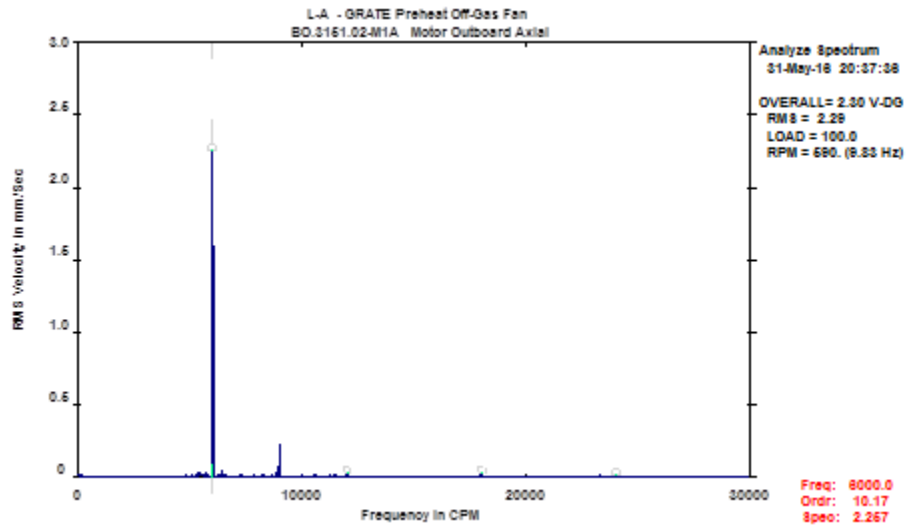
MEASUREMENT POINT	OVERALL LEVEL	HFD / VHFD
-----		
BO.3151.02 - GRATE Preheat Off-Gas Fan		(31-May-16)
	OVERALL LEVEL	1K-20kHz
M1H	.163 mm/Sec	.391 G-s
M1V	.223 mm/Sec	.378 G-s
M1A	1.12 mm/Sec	.632 G-s
M2H	.217 mm/Sec	.233 G-s

M2V	.226 mm/Sec	.224 G-s
M2A	.410 mm/Sec	.418 G-s

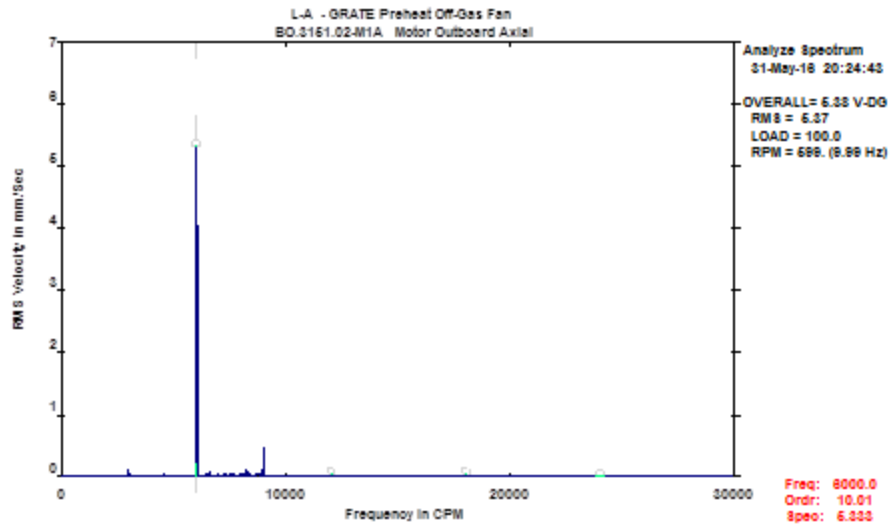
#### Clarification Of Vibration Units:

Acc	-->	G-s	PK
Vel	-->	mm/Sec	RMS

### Motor NDE Axial Vibration Spectrum



### Motor body Vibration



### Observations :

- Motor NDE axial vibration is slightly higher than radial vibration
- 2 X Electrical line frequency seen in the spectrum.
- Humming & Modulating sound heard from motor during the trial.
- Sudden drop in 2X Line frequency vibration noticed when motor is switched off.

### Bearings details

Location Of Bearing	Bearings	ID	OD	Width	Internal Radial Clearance
Motor Thrust Bearing	6044M/C3 Ball Bearing	220mm	340mm	56mm	0.075 to 0.14mm
Motor Radial bearing	NU1044M/C3 Cylindrical Roller Bearing	220mm	340mm	56mm	0.16 to 0.22mm
Fan Fixed Bearing	RTL 10 Sleeve Bearing With Thrust Collar	250mm	--	450mm	0.27 to 0.40mm
Fan Free Bearing	RTL 10 Sleeve Bearing	250mm	--	450mm	0.27 to 0.40mm

## Bearing Arrangements

