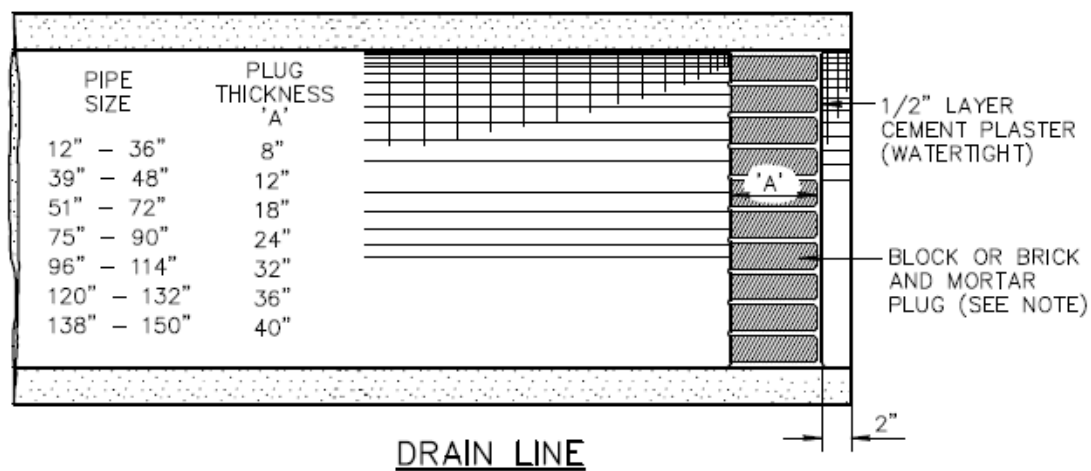
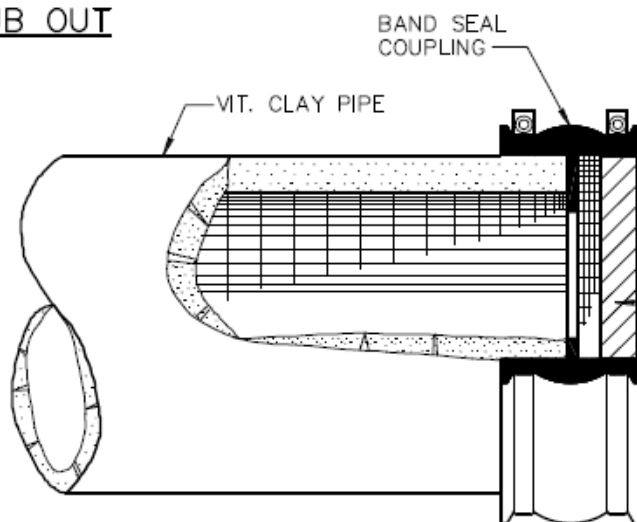


TYPICAL STUB OUT



NOTES:

- NOTE: COMPACT SOIL AT END OF PIPE TO 95% OF MAXIMUM DENSITY.
- IF DEPTH OF COVER IS LESS THAN 5' OR GREATER THAN 10' INCREASE PLUG THICKNESS A MIN. OF 4".



SEWER LINE

